



FAITHFUL

Christ Child Shrine project to be completed this Fall

The Christ Child Shrine project broke ground at the end of August with a completion date planned for the first of October!

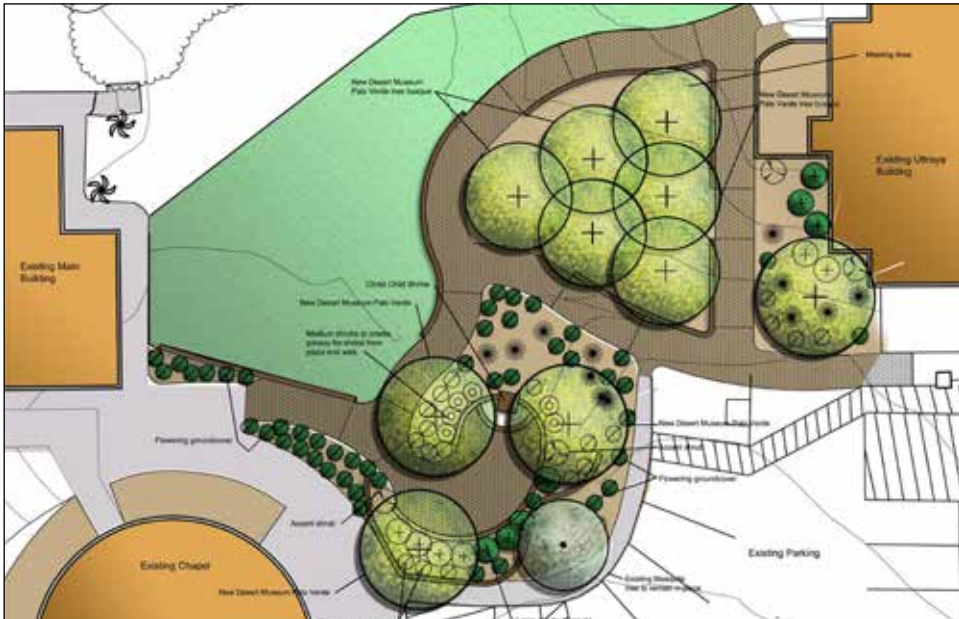
The Christ Child Shrine project is going to be an amazing addition to our campus environment, located at the site of the old cottage which served in the past for the Christ Child Society and before that as the caretaker's quarters. The location will provide a place for personal contemplation in the heart of our campus, both for retreat attendees and our broader community who regularly attend Mass here.

The entire project area will cover about 3,000 square feet with the focus being the image of the Christ Child located within the open shrine. The shrine will sit in a lush and shaded desert garden under a canopy of native trees and plants. Rock wall bench seating will provide a natural sitting arrangement throughout the shrine whether for solitude or for small

group gatherings and discussions.

This will be a beautiful enhancement to our campus and provide a spiritual oasis next to our chapel. Thanks to the many donors who have so generously supported this project!! We will provide updates as we progress. *CONTINUED ON PAGE 2*



The Shrine project is Phase 1 of Mt. Claret's master improvement plan. Phase 2 and 3 will include Chapel upgrades, a redeveloped parking lot to include Stations of the Cross and improved driveway entrance. Donations to the Master plan will support the current phase and any excess dollars received will be allocated to the next phase. Thank you to all of our donors for continuing to keep Mt. Claret vibrant and relevant to the faithful in our community.

Annual Fund

UPDATE

Our annual campaign, the Fund for Mt. Claret ended June 30th. We run this campaign each year from the week following Easter to the end of June. We fell short of our published goal of \$120,000. Our actual recorded amount is approximately \$82,000. While this seems substantial, this shortfall will only impact those special projects we had identified in our marketing material. Those projects, while important and a benefit to our operations can be deferred to another day.

Our day to day operations will not be impacted by this shortfall.

We are very grateful to our many loyal and supportive donors who did give to the annual campaign.

The fund is an essential part of our



financial plan as it helps cover the cost of larger maintenance needs as well as underwrites special projects. Mt. Claret is a gorgeous 10 acre facility with over 60,000 square feet of building space.

Welcome to Mt. Claret



Please join us in welcoming Stephanie Silva as our front office Receptionist and Administrative Assistant. Stephanie recently graduated from Arizona State University with a degree in Nonprofit Leadership and Management. Additionally, she

"I'm excited to be here at the Mount Claret Retreat Center! I see so much has already been done to improve the center and I hope to be of assistance in it's development."

brings to Mt. Claret experience in development work and event planning. Stephanie will be working on a part-time schedule Tuesday-Friday. Drop in for a tour or call her for any questions that you may have. Welcome Stephanie!



602.840.5066 | MtClaret.org | 4633 N. 54th Street · Phoenix, AZ 85018

ALL ABOARD!

the
S.S. EVENING
UNDER THE STARS

Evening Schedule

5:00 – 7:00 PM

Hosted Reception & Casino Night with Extravagant Raffle Prizes
(Cruise Casual Attire)

7:15 – 8:30 PM

Dinner

8:30 – 9:00 PM

Live Auction & Raffle Drawing



CALL FOR TICKETS!

602.840.5066

www.MtClaret.org

4633 N. 54th Street | Phoenix, AZ 85018

Annual Report

Fiscal Year Ending
June 30, 2016

I am pleased to provide our annual financial report for the fiscal year ending on June 30, 2016. Included here are two pie charts showing our income and expenses by major categories.

Mt. Clarets fiscal year ended on June 30th and working with our Finance Committee, bookkeeper, and CPA we have our end of year report to share with you. We are happy to report that we have ended the year with a surplus for the fourth year in a row! This is a wonderful accomplishment and the result of hard work on the part of our staff, a full retreat calendar, and the generosity of our donors.

Compared to last year our income increased by 12%. Part of that increase was due to a restricted donation from the proceeds of a Will. We saw increases in our Retreat Center income, Sunday plate collection, restricted

and unrestricted donations. We did record a decrease in our income from Evening Under the Stars, endowment distribution, and rental income.

On the expense side compared to last year, we reduced our expenses by 3%. We had reductions in utilities, development and fund raising expense, advertising, and supplies. We did have increased expenses in maintenance and equipment, depreciation, and computer/IT expenses. Our net surplus is \$141,245!

Thank you to all who are reading this! Your interest shows a great love and appreciation for this special jewel in the crown of our diocese. Please continue to pray for Mt. Claret and our mission in serving our diocese!

THANK YOU
to all of our
generous donors!

Mt. Claret is always busy with retreats, meetings and workshops. Here is a peek at some of our visitors:

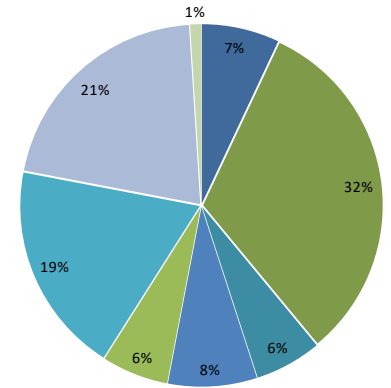
Annunciation School
Arcadia Camelback Tour
Benedictine Oblates
Blessed Sacrament
Neo Catechumenal Way
Bourgade High School
Bukas Loob Siyo Dios
Carmelite Sisters

Catholic Cemeteries
Catholic Community Foundation
Catholic Engaged Encounter
Catholic Singles Community
Christ Child Society
Consolata Sisters
Crosier Community
Cursillo Movement
Diocese of Phoenix
Dominican Sisters
Encuentro Con Jesus
Engaged Encounter
Legatus
Maggie's Place

INCOME

Evening Under the Stars	\$52,545.00	7%
Retreat Center Income	\$232,624.98	32%
Endowment Distribution	\$45,695.21	6%
Sunday Plate Collection	\$57,436.16	8%
Rental Income	\$46,094.25	6%
Unrestricted Donations	\$136,859.88	19%
Restricted Donations	\$155,958.49	21%
Miscellaneous	\$2,553.73	1%

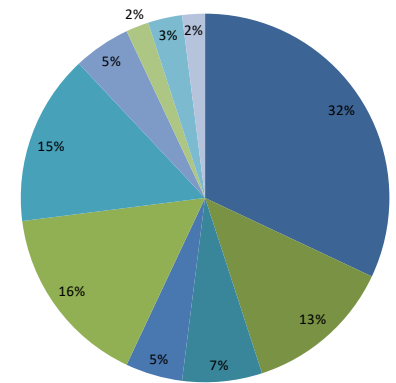
TOTALS \$729,767.70 100%



EXPENSES

Salary & Benefits	\$180,727.56	32%
Utilities	\$74,939.65	13%
Development/Fundraising	\$41,892.47	7%
Insurance	\$27,001.41	5%
Maintenance/Equipment & Furnishings	\$97,919.31	16%
Depreciation	\$90,424.80	15%
Computer/IT/Professional Fees	\$29,944.57	5%
Hospitality/PR/Printing/Advertising	\$17,035.45	2%
Supplies	\$18,526.17	3%
Dues/Fees/Assessments	\$10,110.66	2%

TOTALS \$588,522.05 100%
NET PROFIT \$141,245.65



Mary Magdalene Parish Seniors
OLPH Glendale Parish
OLPH Scottsdale Men
OLPH Scottsdale Sodality
Order of Malta
Our Lady of Assumption Sodality
Our Lady of Guadalupe Monastery
Queen of Peace
Neo Catechumenal Way
Rachel's Vineyard
San Juan Diego Institute
Seminarians
Send Me on Vacation
Serra Club

Servants of the Lord Sisters
Seton Catholic Preparatory
St. Agnes School
St. Anne Grupo de Oracion
St. Anthony Parish Casa Grande
St. Gregory
St. Joan of Arc RCIA
St. Mary's High School
St. Theresa School
St. Thomas the Apostle School
Theology of the Body
Xavier College Preparatory

CHECK OUT THE NEW:

MtClaret.org



A new design has been incorporated into the Mt. Claret website. Please go online and see what is new at **MtClaret.org!**



4633 N. 54th Street • Phoenix, AZ 85018