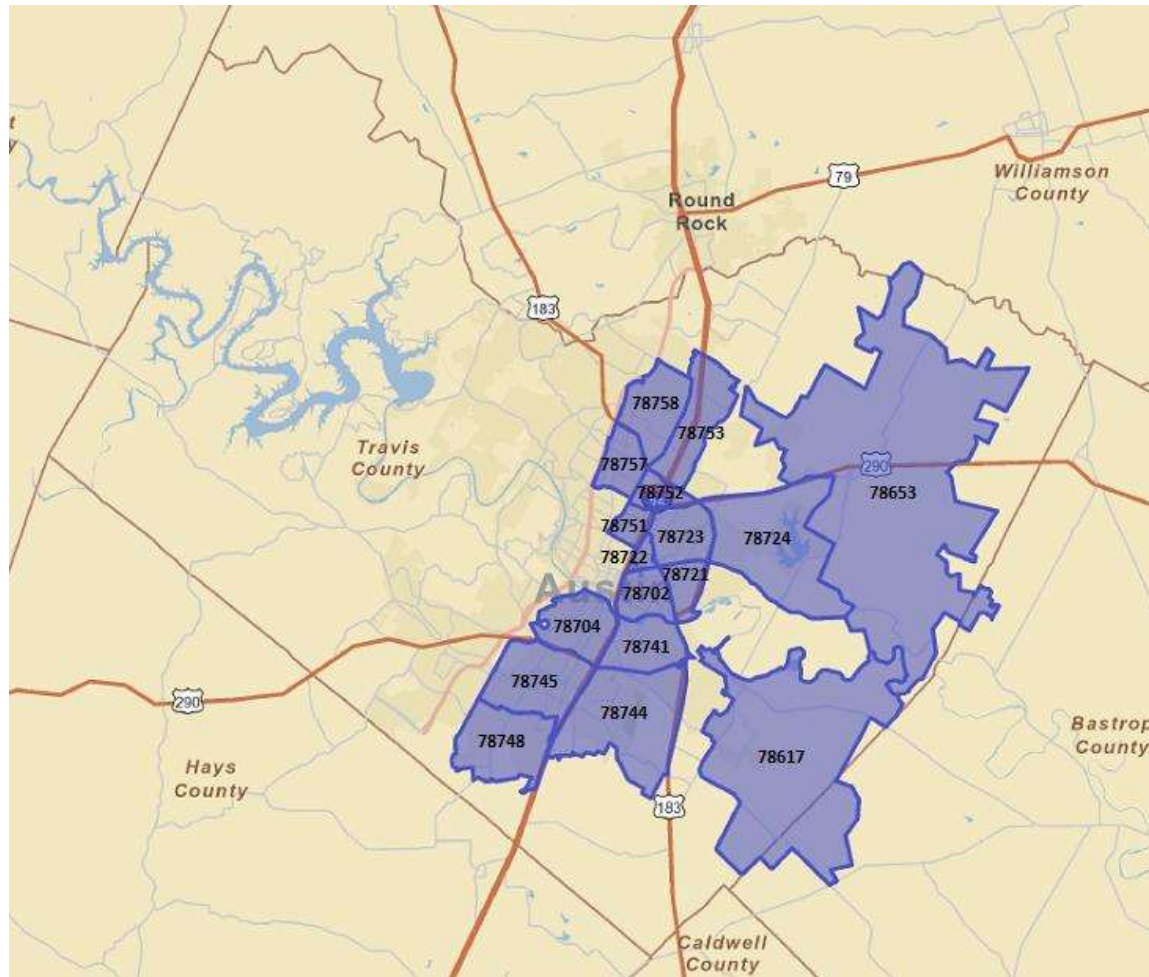


2011 Mapping Study Findings

Central Texas Afterschool Network



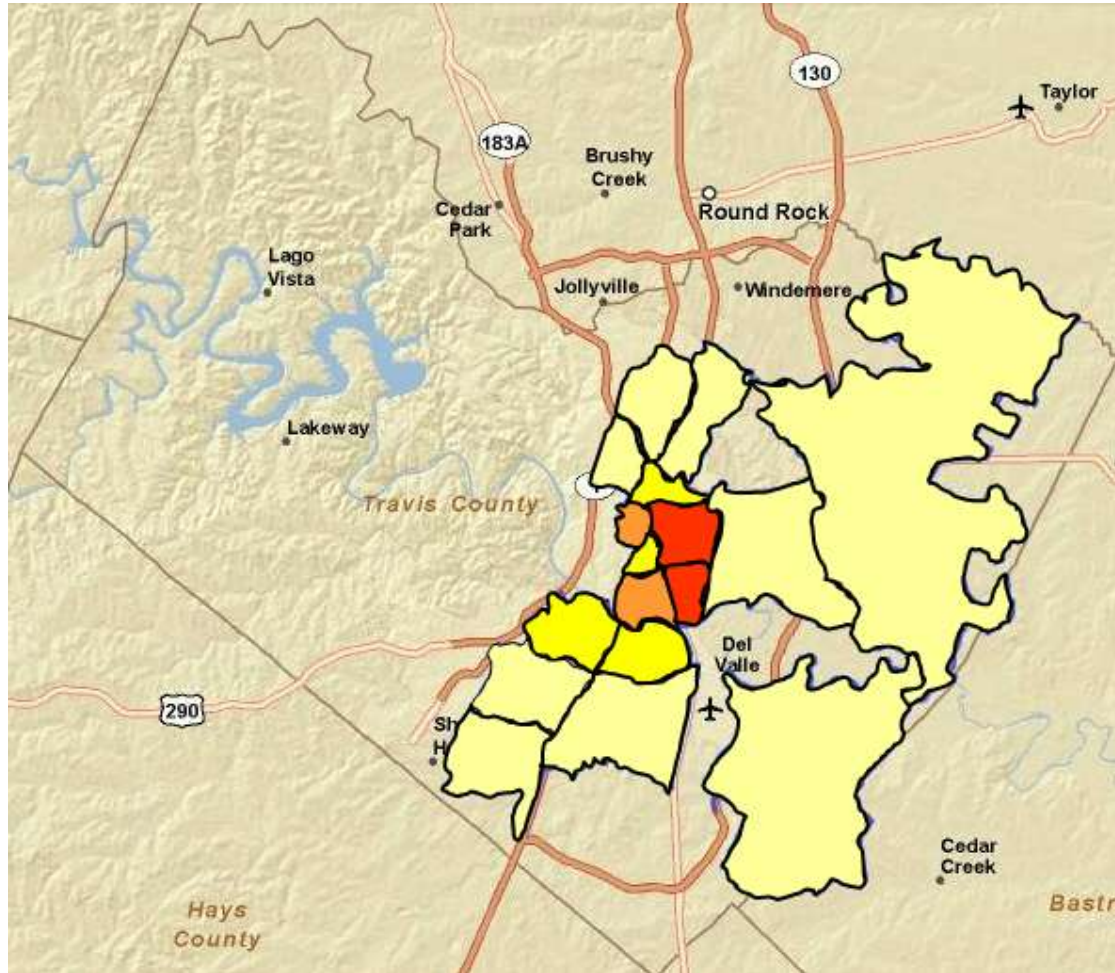
Zip codes included in this mapping study



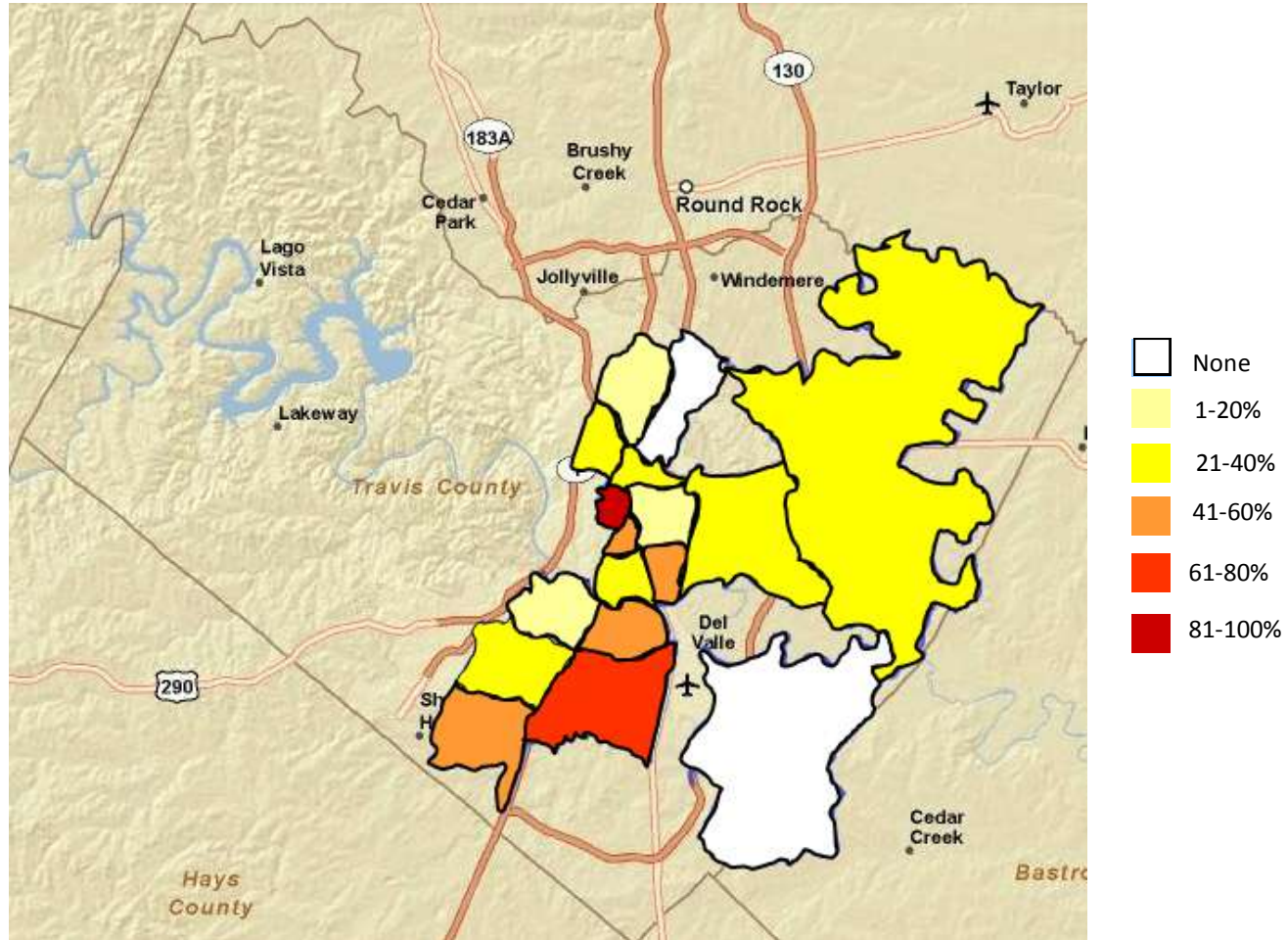
Key Findings

- 23% of students are served 30 days or more by out-of-school time (OST) programs
- 38% of students participated for at least one day in OST

% of students served 30 days or more by an out-of-school time program



% of sites providing 25 days or more of summer programming



Key Findings

- Only 30% of sites provided services in the mornings and only 11% of sites provided services on the weekends

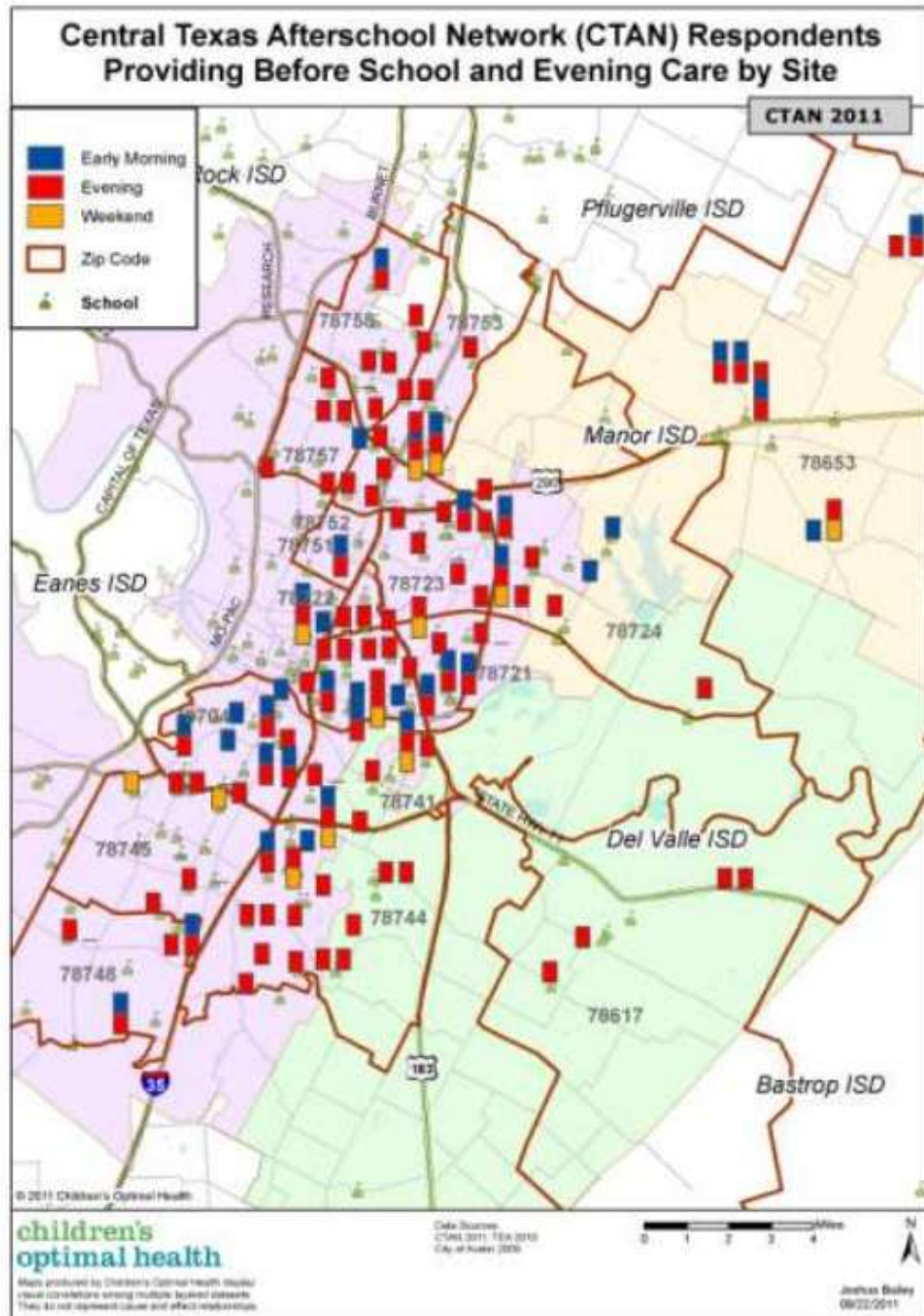


Key Findings

- Only 30% of sites provided services in the mornings and only 11% of sites provided services on the weekends



children's
optimal health



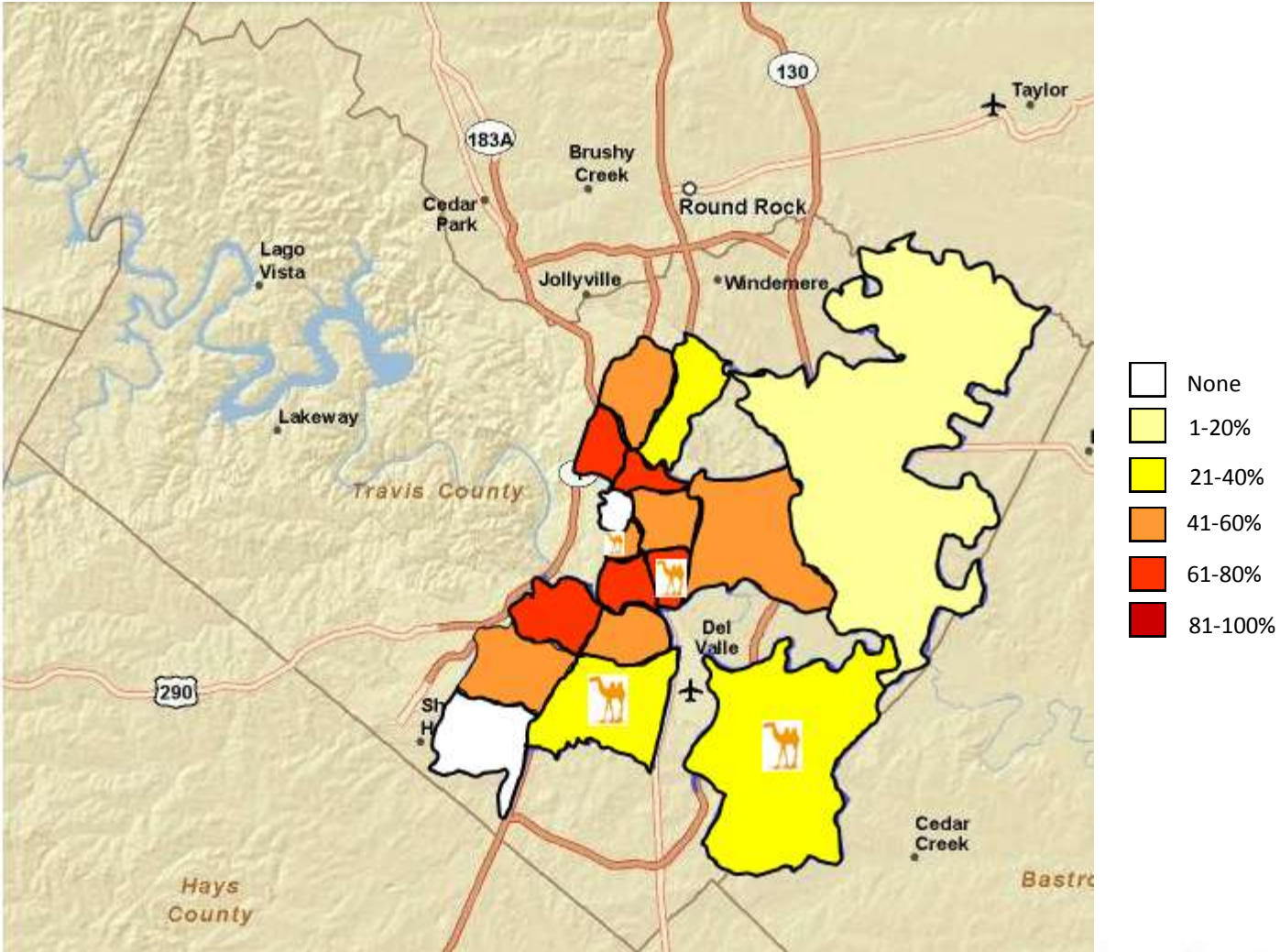
Key Findings

- 78% of students served were elementary students
- Meanwhile...
 - Only 43% of sites served middle school students
 - AND only 29% served high school students

Key Findings

- While 98% of sites provide snacks to students, only 47% provide meals to students.
- Meals are often not provided to students at sites that are located in food deserts

% of sites providing meals



What are the key barriers to access OST programs

- Younger Siblings/Continuity of Service
- Transportation
- Days and Times of Service
- Community Knowledge about OST Programs
- Costs of Programs



Feedback

- Is this information helpful to you?
- How would you like to see this information further shared?
 - Extensive report
 - Brief handout
 - Other ideas?



Feedback

- What would you suggest CTAN improve upon in future mapping study projects?
- Are there other next steps to be taken now that the study has been completed?

