

# GPRS SERVICES



UTILITY LOCATING



VIDEO PIPE INSPECTION



LEAK DETECTION



MAPPING & MODELING



CONCRETE IMAGING



3D LASER SCANNING

IN PURSUIT OF **100%**  
**SUBSURFACE**  
**DAMAGE**  
**PREVENTION**

We are not satisfied with our current accuracy rate of 99.8%. We are in pursuit of 100% ■

**WIDENING**  
**THE**  
**GAP**

We seek to widen the gap between GPRS and the industry norm for subsurface damage prevention ■

**SAFETY**  
**ALWAYS ON**  
**OUR RADAR**

We strive to keep our clients safe and free from damages & injuries ■

**WHAT'S**  
**UNDER**  
**NEATH**  
**MATTERS**

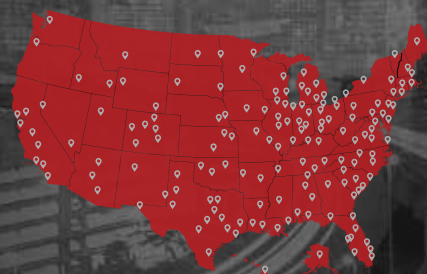
We choose team members who exemplify our core values as they work to locate your subsurface hazards ■

**GPRSINC.COM** ///

# LET'S GET TO WORK SCHEDULE A PROJECT

/// **NATIONWIDE COVERAGE**

GPRS has an unmatched nationwide service network, making it easy to find an expert Project Manager in your area. Please contact your local GPRS Project Manager for information, pricing, and scheduling.



SCAN TO  
FIND A



PROJECT  
MANAGER  
NEAR YOU

Jeff Barrett  
jbarrett@truepointscanning.com  
419-265-1012

CORPORATE OFFICE // info@truepointscanning.com // 419.843.SCAN (7226)

VIEW YOUR  
INFRASTRUCTURE  
WITH SITEMAP

**SITEMAP**  
POWERED BY **GPRS**

**YOUR INFRASTRUCTURE**

ACCURATELY MAPPED ■ DIGITALLY STORED ■ EASILY ACCESSIBLE

**SITE-MAP.COM**

**GPRS**

**3D LASER  
SCANNING**

**BUILD AT THE SPEED  
OF INSIGHT**





**BUILD AT THE SPEED  
OF *INSIGHT***

## GPRS CAN HELP



### AS-BUILT CREATION

As-built verification, as-built documentation, and existing conditions surveys have never been more accurate than with 3D laser scanning technology. The existing conditions at a facility can be documented prior to the start of any project. GPRS 3D Laser Scanning services can provide the link between any unknown existing conditions and a digital twin ■



### 3D BIM MODELING

We can capture data for both CAD and BIM files. CAD documents a 3D rendering of the space. BIM allows us to capture the geometry and spatial relationships, as well as document of features of the building, such as specific information about the type of materials used, the quantity used, and how those characteristics impact the building as a whole ■



### CLASH DETECTION / AVOIDANCE

We use proactive and reactive processes to detect and avoid clashes in our 3D laser scans. Our clash avoidance and detection abilities employ complex computing to help us determine the best path and avoid/detect clashes. Our BIM models and clash detection/avoidance allow for better planning, reduced change orders, and lower material costs ■



### AERIAL DRONE VIDEO AND PHOTOGRAMMETRY

TruePoint has FAA-licensed pilots to aid in aerial video, building surveys, property surveys, and photogrammetry services. TruePoint utilizes drones equipped with HD video and HD photo cameras. We offer safe, accurate, and cost-effective data collection, ensuring positional accuracy in vast, dangerous, or hard-to-reach areas ■

**TruePoint**

GPRS is the leading infrastructure mapping company – intelligently visualizing the built world.

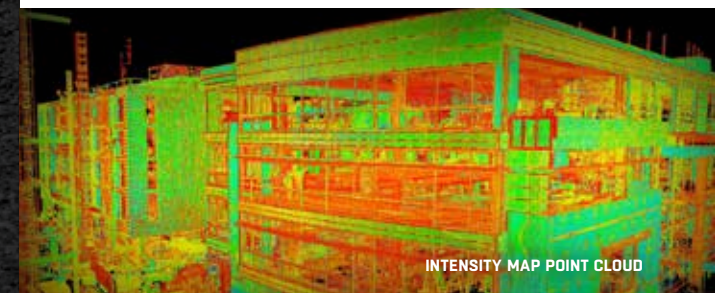


TRUVIEW PANORAMIC IMAGE

## MAPS & MODELS

Our team of in-house engineers, architects, and CAD technicians can produce custom deliverables for your project, ranging from point cloud data to 2D drawings and 3D models. Maps and models can be provided at any level of detail in a variety of formats, including Revit, AutoCAD, ReCap, Navisworks, Civil 3D, BIM 360, A360, FARO As-Built, JetStream Viewer, and NavVis.

- Point Cloud Data (Raw Data)
- 2D CAD Drawings
- 3D BIM Models
- 3D Mesh
- TruViews
- Advanced Analysis and Calculations
- 3D Virtual Tours



INTENSITY MAP POINT CLOUD



3D BIM MODEL

**GPRSINC.COM**