



Terraprobe Geoscience Corp.
 112-17 Fawcett Rd.
 Coquitlam, British Columbia V3K 6V2,
 Canada

Phone (604) 553 4778
 Fax (604) 243 6993
 Email gpr@terraprobe.com
 Web www.terraprobe.com

Work Order #PV 8010-0-2

Work Location Construction Company Ltd, 1000 West St Vancouver, BC V0X 9O8	Work Date: 2020-08-16	Customer PO# 8000
	Arrival Time: 7:44 AM	Finish Time: 1:05 PM
	Duration: 5.35	Team: Robert Smith
	Summary GPR Concrete Scanning - 1000 West St Vancouver, BC	Fixed Price:

Item	Description	Qty
Scan Targets:		
Target 1	Target 2	Target 3
Scanning Location:	Inside/Outside:	Q Deck:
Construction Type:	Occupied:	

Notes:

DATE: August ,16

EQUIPMENT USED: Sir 4000 & palm #2 (rotated).
 IDS C-thrue

AREAS SCANNED / TASK (if different from original notes):
 Continue scanning for plumbing floor penetrations.
 Scan full floor of electrical room (suspended slab, approx 6" thick).

Extend some areas to accommodate for necessary moving of core locations

NOTES:
 Use lumber crayons for markings in electrical room. For removal try oven cleaner or anything tough on grease.

COLOUR CODING:

yellow = wire mesh (typ.)

blue hatched: low flute (deep channel, thick concrete)

red = conduit

Green: point target. Check for beam below

RECOMMENDATIONS/WARNINGS:

GPR cannot penetrate through metal. Client to check for beams below. Point targets can be Nelson studs and indicate location of beam.

Recommend coring on high flute (thin slab) only, as targets running within low flute (deep channel) are more likely to be missed.

LIMITATIONS:

GPR is interpretative in nature.

ERROR MARGIN:

on depth: +/- 20% or 1" (whichever is greater)

horizontal: +/- 1" on rebar, +/-2" on conduits, +/-3" on PT cables.

For safety reasons we recommend keeping the above mentioned distance between our markings and the edge of the core.

Report Requested On-Site

Coring Requested On-Site

I hereby acknowledge the satisfactory completion of all services rendered, and agree to pay the cost of services as specified above.

Customer Signature

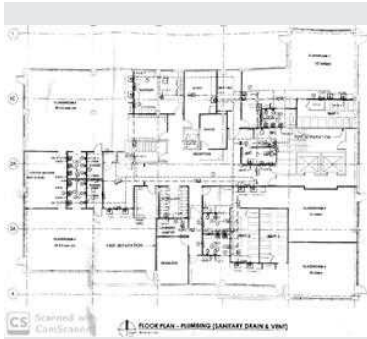


Date

2021-02-01



Photos Before



Plumbing floor plan



Photos After



Classroom 1 kitchenette Blue hatched: low flute Yellow: wire mesh (typ.)



Classroom 1 change room: floor drain Blue hatched: low flute Red: conduits



Classroom 1 change room: sinks Blue hatched: low flute Red: conduits



Classroom 1 change room:
toilets Blue hatched: low flute
Red: conduits Move: scan
additional area



Staff room sink Blue hatched:
low flute



Electrical room floor Blue:
bottom rebar Yellow: top rebar
Slab thickness approx 6"



Electrical room floor Blue:
bottom rebar Yellow: top rebar
Slab thickness approx 6"



Electrical room floor Blue:
bottom rebar Yellow: top rebar
Slab thickness approx 6"



Electrical room floor overview
Blue: bottom rebar Yellow: top rebar Slab thickness approx 6"



WC sink Blue hatched: low flute
Scan larger area



WC toilet Blue hatched: low flute
Red: conduits Scan larger area



Classroom 1 change room:
toilets Area extended Blue
hatched: low flute Red:
conduits? Could be structural
reinforcing around column
Green: point target



Classroom 1 change room
Connect area for sink and floor
drain Blue hatched: low flute
Red: conduits



WC toilet - area extended Blue
hatched: low flute Red: conduits



Classroom 2 sink Blue hatched:
low flute Red: conduits



WC sink Area extended Blue
hatched: low flute Red: conduits



WC area extended Blue
hatched: low flute Red hatched:
busy with potential conduits. Do
not core in this area.



WC sink Area extended Blue
hatched: low flute Red: conduit
Green: point target. Check for
beam below



Classroom 2 sink Area
extended Blue hatched: low flute
Red: conduits