

Side Effects Continued





Other side effects may occur that usually do not need medical attention, such as rare dizziness, lump in the penis, weakness, faint feeling, low blood pressure, increase in heart rate, sweating or flushing. These side effects may subside during treatment as your body adjusts to the medicine. However, check with your doctor if any of the following side effects continue: bruising, bleeding or swelling at the injection site, burning along the penis, difficulty ejaculating, itching at the penile head and mild pain. Inform your doctor if you have any other medical conditions, for example, bleeding problems, liver disease, priapism, etc.

Storage

Your medication will arrive frozen. Thaw out completely in the refrigerator prior to use. Keep refrigerated and do not re-freeze. The minimum temperature required to maintain the potency is refrigeration at 36-46 degrees F or 2-8 degrees C. When traveling, keep the medication cool with an ice pack. DO NOT use the medication if cloudy or has turned color. Tri-mix should be clear and colorless.



Contact Us

-  305.556.2673
-  compoundrx@uaprx.com
-  www.uaprx.com
-  14350 NW 56th Ct., #114
Miami, FL 33054



UNIVERSAL ARTS
COMPOUNDING PHARMACY
Specialty & Sterile Medications • Clinical Trials

Quality, Safety, & Expertise
in Sterile-Non Sterile
Compounded Medications



TRIMIX

Penile Injection Guide

What is Trimix?

Intended to treat men with erectile dysfunction. It is a combination of three medications: Phentolamine, Papaverine, and Prostaglandin. Phentolamine causes blood vessels to expand, thereby increasing blood flow. Papaverine and Prostaglandin have a similar effect, and when used in combination with Phentolamine, it increases blood flow to the penis resulting in a powerful erection

Side Effects

Tri -mix may cause some unwanted effects, which include prolonged erection for more than 4 hours. This is called priapism and requires immediate attention. If this happens, call the office immediately and the doctor will advise on what to do. If you cannot contact your doctor please proceed to the nearest emergency room.

Administration

- Gather all -supplies necessary . Cleanse the injection site with alcohol. Withdraw the exact dose prescribed by your doctor with an insulin syringe. *See figure 1.*
- Inject the medication directly into the side of the penis (the “10am” or “2pm” position) avoiding any visible veins. It should be injected directly into the corpora cavernosa or body of the penis. *See figure 2 and 3.*
- If the injection is very painful or bruising or swelling is noticed, you may be injecting the medication under the skin. STOP! Withdraw the needle and reposition it properly before continuing with the injection.
- After you have injected Tri -mix, put pressure on the injection site for one minute. Massage your penis, so that it works better. The medicine will begin to work in 5 -20 minutes and it should last 30 minutes to an hour or longer.
- Use the injection as directed by your doctor. It should not be used more than once daily, at least 24 hours apart and it should not exceed 2 -3 times a week. DO NOT inject Tri -mix into any other body site.

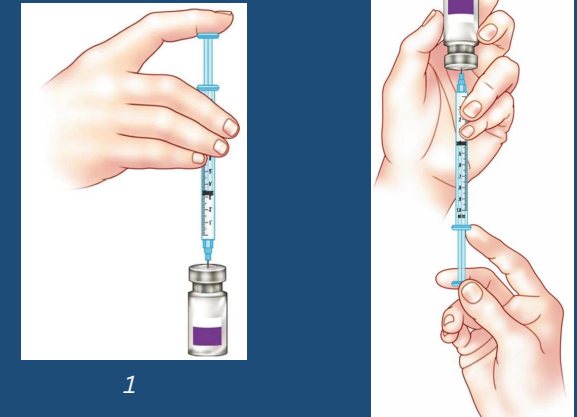


Figure 1

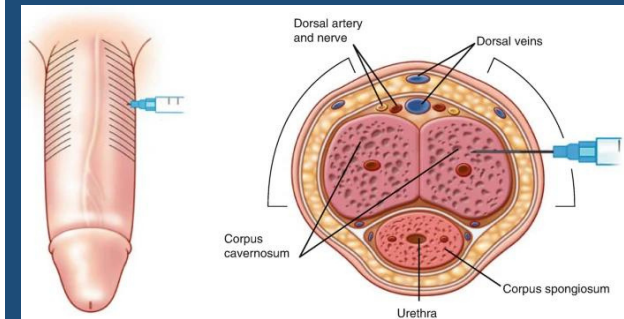


Figure 2

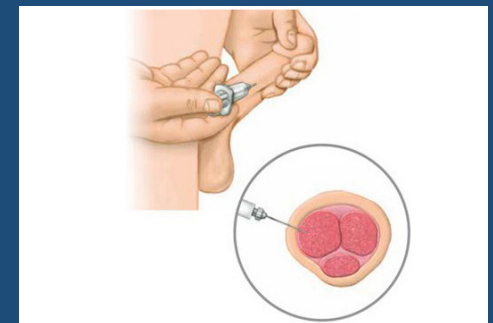


Figure 3