

SIDE EFFECTS CONTINUED

Other side effects may occur that usually do not need medical attention, such as rare dizziness, lump in the penis, weakness, faint feeling, low blood pressure, increase in heart rate, sweating or flushing. These side effects may subside during treatment as your body adjusts to the medicine. However, check with your doctor if any of the following side effects continue: bruising, bleeding or swelling at the injection site, burning along the penis, difficulty ejaculating, itching at the penile head and mild pain. Inform your doctor if you have any other medical conditions, for example, bleeding problems, liver disease, priapism, etc.

STORAGE

Your medication will arrive frozen. Thaw out completely in the refrigerator prior to use. Keep refrigerated and do not re-freeze. The minimum temperature required to maintain the potency is refrigeration at 36–46 degrees F or 2–8 degrees C. When traveling, keep the medication cool with an ice pack. **DO NOT** use the medication if cloudy or has turned color. Trimix should be clear and colorless.

CONTACT US

Phone (305) 556-2673 (text enabled)
Fax (305) 556-9749

Website www.uaprx.com

Location 14350 NW 56th Ct #114
Miami, FL 33054

Pharmacy Hours: 9:00 am – 5:00 pm
Pick-Up/ Drop-Off: 9:00 am – 7:00 pm



ALSO AT OUR PHARMACY:

- Delay Topical Gel (WITH LIDOCAINE)
1/5% 15GM
- Priapism Antidote Kit
- Auto-Injector
- Vacuum Therapy Device Pump



UNIVERSAL ARTS COMPOUNDING PHARMACY

TRIMIX

INJECTION GUIDE

WHAT IS TRIMIX?

Intended to treat men with erectile dysfunction. It is a combination of three medications: **Phentolamine, Papaverine, and Prostaglandin**. Phentolamine causes blood vessels to expand, thereby increasing blood flow. Papaverine and Prostaglandin have a similar effect, and when used in combination with Phentolamine, it increases blood flow to the penis resulting in a powerful erection.

SIDE EFFECTS

Trimix may cause some unwanted effects, which include prolonged erection for more than 4 hours. This is called priapism and requires immediate attention. If this happens, call the office immediately and the doctor will advise on what to do. If you cannot contact your doctor please proceed to the nearest emergency room.

ADMINISTRATION

Supplies

Gather all -supplies necessary. Cleanse the injection site with alcohol. Withdraw the exact dose prescribed by your doctor with an insulin syringe. See figure 1.

Injection

Inject the medication directly into the side of the penis (the "10am" or "2pm" position) avoiding any visible veins. It should be injected directly into the corpora cavernosa or body of the penis. See figure 2 and 3.

Caution

If the injection is very painful or bruising or swelling is noticed, you may be injecting the medication under the skin. STOP! Withdraw the needle and reposition it properly before continuing with the injection.

After injection

After you have injected Trimix, put pressure on the injection site for one minute. Massage your penis, so that it works better. The medicine will begin to work in 5-20 minutes and it should last 30 minutes to an hour or longer.

Important Notice

Use the injection as directed by your doctor. It should not be used more than once daily, at least 24 hours apart and it should not exceed 2-3 times a week. **DO NOT** inject Trimix into any other body site.

Fig. 1

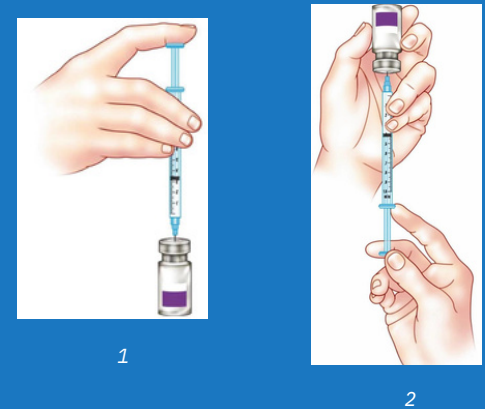


Fig. 2

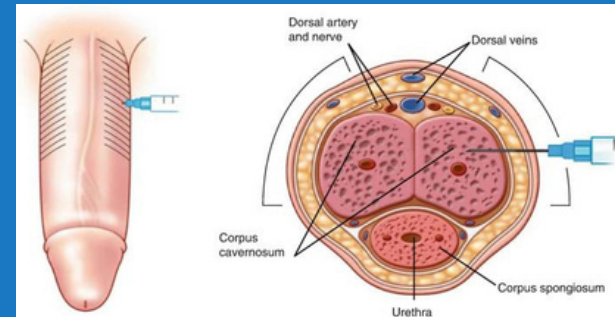


Fig. 3

