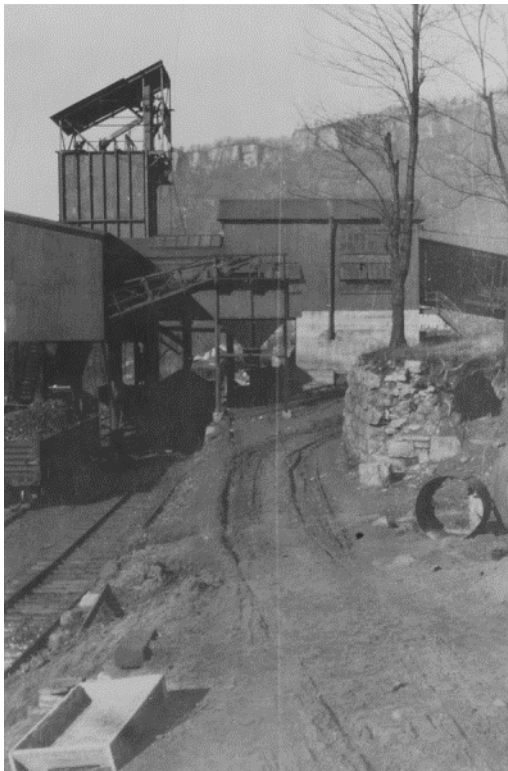


## Nuttallburg: Photographs of Completed Project



View of Nuttallburg in 1927 from the Ford Archives in Dearborn, Michigan.



Historic Views of the Tipple and Conveyor from the Ford Archives in Dearborn, Michigan.





Tipple Interior:

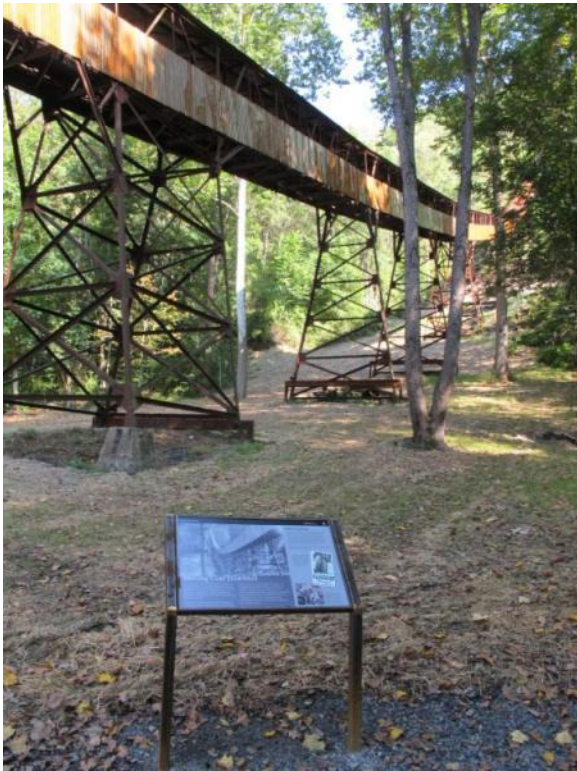
Upper left: view into loading gallery.

Upper right: view toward the loading gallery from the bridge to the conveyor house.

Middle left: view of the conveyor entering the tipple at the conveyor house.

Middle right: view of the bridge between the conveyor house and the loading room; this is where the shakers would have been to separate the coal into various sizes. The chute in the foreground would dump into the third track.

Lower left: view of the floor of the silo.



Views of the Conveyor and the interpretive area by the main road behind the tippie.



Views of the mine portal and the head house. A new observation deck has been added to the side of the head house to allow visitors to look inside the building and also to look down the conveyor to the tibble and the river below.



Views around the coke ovens. Upper left photo looks north towards the coke ovens with the sand house foundation in the foreground. The upper right is a view of the wayside and bench along the southern end of the wharf trail that passes in front of the bank of ovens. The middle left photo shows an intact coke oven adjacent to the company store and the middle right shows the main town road above the coke ovens. The lower photos show the road above the ovens and a detail of the wayside for the company store foundation ruins.



Views of various ruins with wayside interpretation. Upper photos show the Clubhouse parking area with a vault toilet, vertical wayside and bulletin board cabinet. The middle left photo shows the boarding house wayside at the end of the parking area and the middle right photo shows the White Church foundation and wayside. The lower photos shows the White School foundations on the left and a typical residential foundation on the right.