

**SENSORS & SOFTWARE**®   
from **RADIODETECTION**

**LMX150**™  
FINDAR® GPR

# Locate buried evidence

Suspect critical forensic evidence  
may be buried?

Looking for a non-destructive method  
to search large areas?

Need to find clandestine graves,  
weapons or other evidence?

If so, LMX150™ FINDAR GPR is for you.



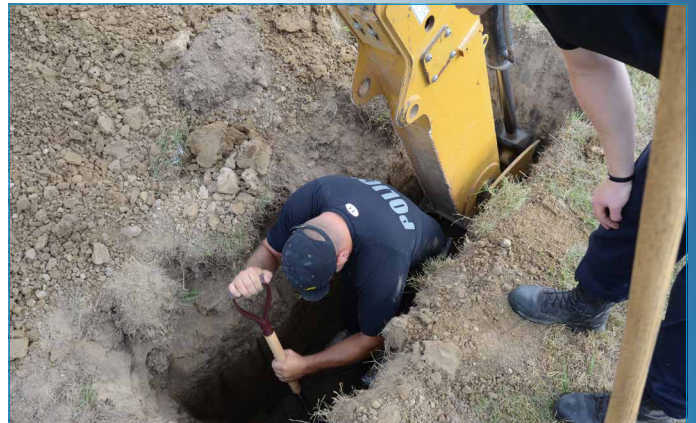


# The LMX150™ FINDAR® advantage



LMX150™ FINDAR® enables law enforcement to **quickly and effectively** search for evidence buried under the ground

- LMX150™ FINDAR® uses ground penetrating radar technology to rapidly image the subsurface
- The intuitive user interface guides investigators through a systematic grid search
- 3D images are generated on-site in seconds pinpointing the position and depth of potential evidence
- Real time images allow decisions to be made on-site. Areas of interest can be identified and excavated immediately





# LMX150™ FINDAR® system overview



## Rugged Touchscreen Display Unit

- Clearly see data in all weather conditions



## Compact Ultra-light Cart

- Easy to transport and deploy
- Cover large areas quickly



## Optional External GPS

- For high accuracy positioning and mapping



## Wi-Fi Reports

- Email screenshot reports directly from the investigation site



## USB Data Transfer

- Data is copied to a USB memory stick for transfer to a computer



## Process Survey Data

- Display results on-site to pinpoint potential evidence



## Internal GPS

- Geotag screenshots for future reference



## Rechargeable Battery

- Allows 4-6 hours of use
- Locally available



## GPR Sensor

- High resolution, ultra-wideband, patented GPR technology



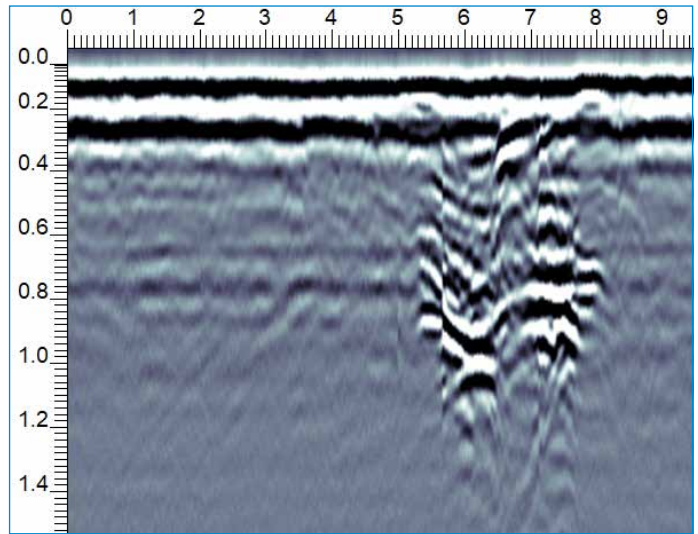
## Odometer

- To collect data at equal intervals



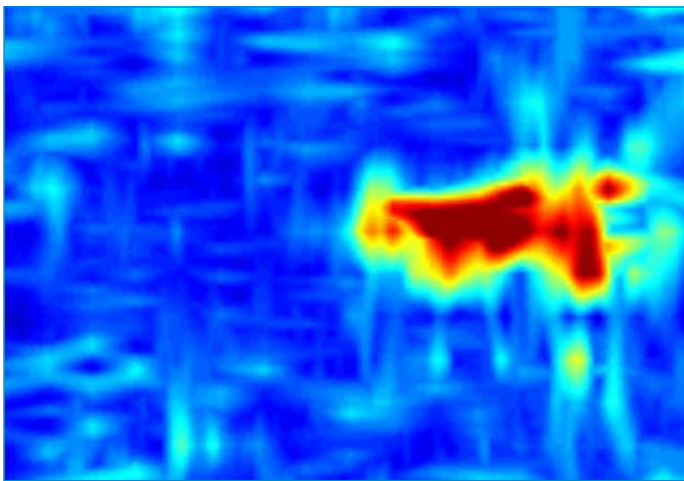
# Locate evidence in real time

- Clandestine graves
- Drugs or money buried in metal or plastic containers
- Buried weapons and ammunition stashes



## Line mode

Collect cross-sectional lines for reconnaissance purposes. Identify and focus your search on relevant areas.



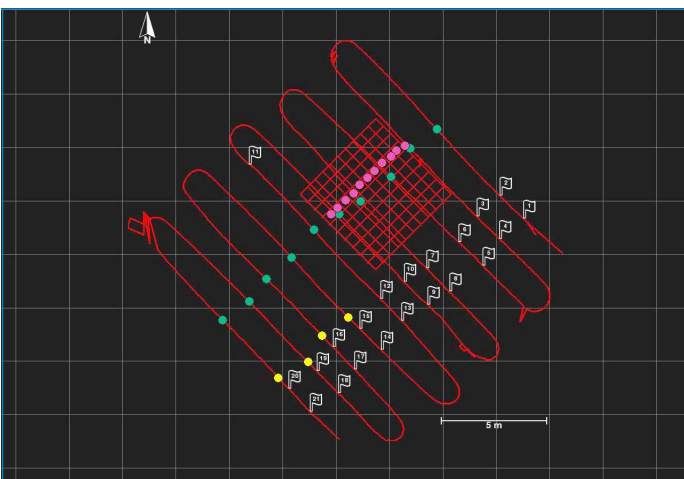
## 3D Depth slicing

After collecting a grid of data generate depth slice images on-site. Pinpoint the position and depth of potential targets.



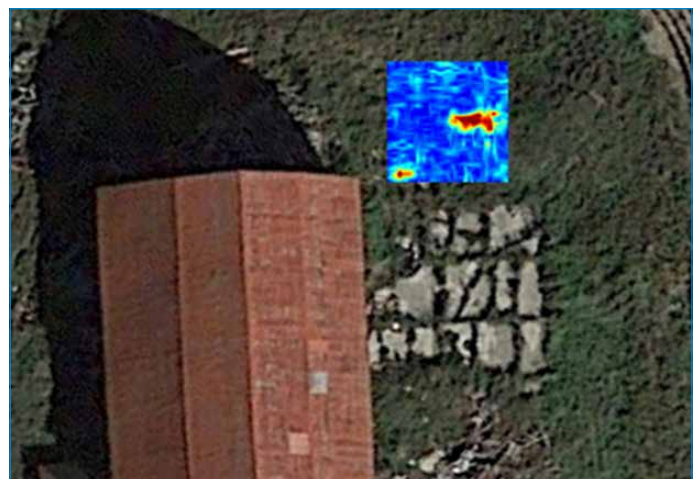
## Field interpretations

Classify targets in real time with field interpretations. Use the touchscreen to color-code each target as it is located.



## Map View on-site display

Using the optional external GPS, identified targets are displayed on the screen in a plan map view.



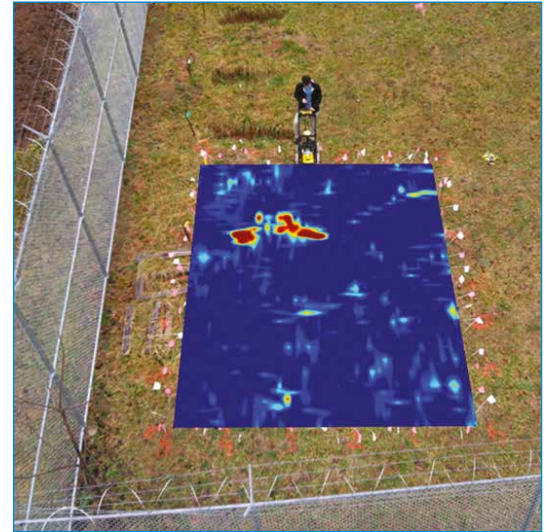
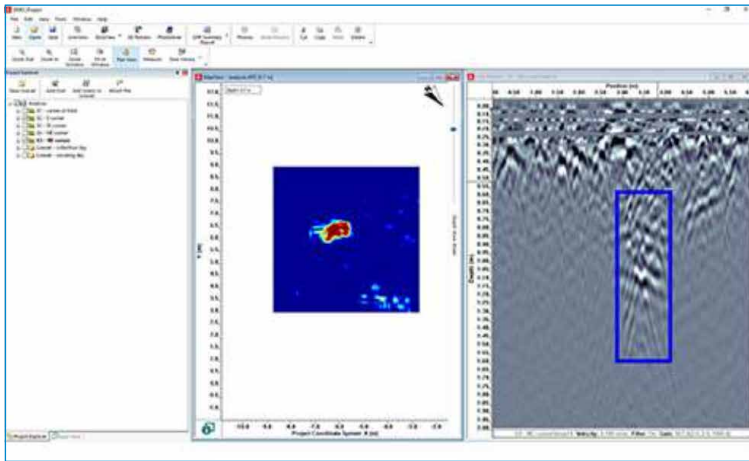
## Geo-referenced output

Using the optional EKKO\_Project™ software, display your survey lines, depth slices and interpretations in Google Earth™ and other similar geo-referenced platforms.



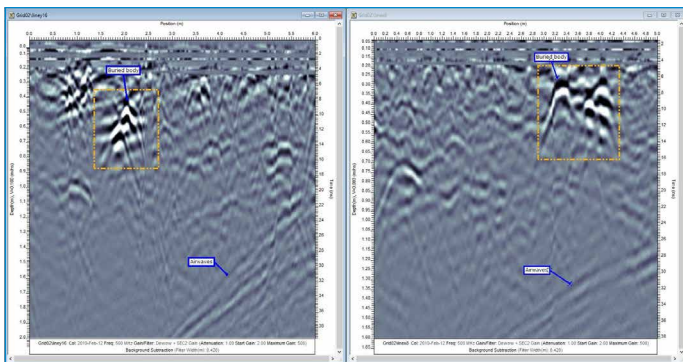
# EKKO\_Project™ Software

Visualize, Understand and Report your GPR results with the optional EKKO\_Project™ PC Software

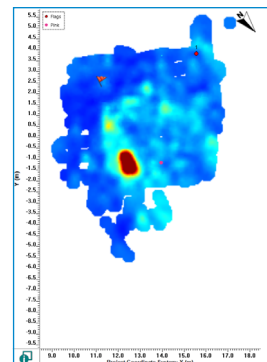


## Core

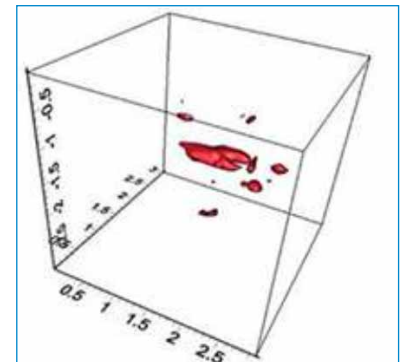
Organize your GPR data, photos and other files and save as a single project file. Easily create PDF reports of your findings.



**Examine** (Cross-sections)



**Reveal** (Depth Slices)



**3D Reveal** (3D Visualization)

## Specifications

Weight & Dimensions	
<b>Size:</b> 115 × 55 × 90 cm (45 × 21 × 35 in)	
<b>Weight:</b> 19 kg (41 lb) (including battery)	
<b>Display Unit size:</b> 21 cm (8 in) diagonal	
Power	
12 volt sealed lead acid gel cell	
<b>Battery Capacity:</b> 9.0 Ah	<b>Battery Weight:</b> 3.6 kg (7.9 lbs)
<b>Battery Life:</b> 4-6 hours	<b>Charger:</b> 110-240V

Environmental & Temperatures	
Ruggedized, environmentally sealed unit and connections	
IP65	Operating temperature range: -40°C to +50°C (-104°F to 122°F)
Regulatory Specifications	
Meets FCC 15.509, IC RSS-220 and ETSI EN-302066	
Data Storage	Depth
230 km (143 miles) of data	Up to 3 meters (10 feet)

## Useful resources to make the most of your LMX150™ FINDAR® GPR

- [Webinars and free online resources](#)
- [Learn more about our training offerings](#)

## Our Mission

Provide best in class equipment and solutions, to prevent damage to critical infrastructure, manage assets and protect lives.

## Our Vision

To be the world's leader in the management of critical infrastructure and utilities.

## Our Locations



### USA

Raymond, ME  
Kearneysville, WV

### Canada

Vaughan, ON  
Mississauga, ON



### Europe

United Kingdom **HQ**  
France  
Germany  
The Netherlands



### Asia Pacific

India  
China  
Hong Kong  
Indonesia  
Australia

Visit: [www.sensoft.ca](http://www.sensoft.ca) Follow us on:    

Scan for more information

