



Voyager™ HD Mainline Inspection System

Capture clear, detailed video of pipes relined 6" to 48" and larger with our innovative Voyager™ HD Mainline Inspection System. It combines a rugged tractor, innovative high-definition 1080p WiperCam® camera, and an advanced CANbus controller.

Detailed HD Video Capture

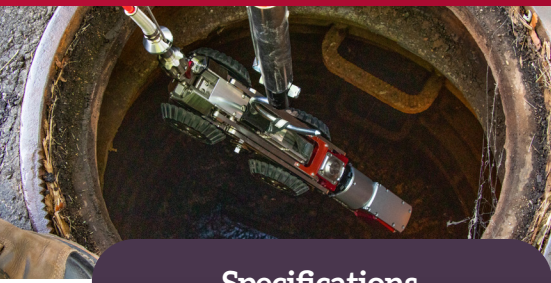
- Pan and tilt 1080p HD video camera captures every detail
- 120x zoom capability for rapid pipe assessment
- Built-in lens wiper technology maximizes time in the pipe
- Dual camera lasers for accurate crack measurement (optional)

Responsive & Powerful

- Compact tractor with all-wheel drive to navigate tough terrain
- Rear-viewing HD camera to monitor retrieval
- Multiple wheel configurations and integral camera lift to match pipe conditions and sizes
- Auto-drive to waypoints and auto-retrieve for maximum efficiency

Easy & Efficient Operation

- Digital CANbus controller delivers instantaneous crawler and camera response
- Fingertip controls for outstanding operator ergonomics
- Handheld pendant for system control at the manhole
- 1200' cable reduces truck setup time



Specifications

Voyager™ HD Mainline Inspection System

Advanced Mainline Assessment Technology

The Voyager HD is powerful, innovative and designed to complete mainline inspections with unmatched accuracy and efficiency. The Voyager is designed and built at Aries Industries' U.S. plant. Easy to use and maintain, the Voyager delivers unmatched video quality.

Overall System Specifications:

- Includes: Controller, Crawler, Camera, Reel

Desktop Controller

- Digital CANbus controls for instantaneous crawler & camera response
- Ergonomic controller with keyboard and dual joysticks
- Responds to multiple controls simultaneously
- Graphical crawler roll-angle display
- Rollover risk alerts
- Loss of seal integrity alerts with proactive internal pressure, temperature & humidity monitoring
- Crawler speed display
- Control tractor, reel & camera at the manhole with handheld pendant

Crawler

- Crawler fits pipes relined 6"-48" and larger
- Standard motorized camera lift with internal gearing
- Autonomous time-saving functions such as auto-drive to waypoints & auto-retrieve
- Tool-less camera attach/detach with rugged connector
- Tool-less cable attach/detach
- Tough, reflective Kevlar lift strap with deployment loop
- HD backup camera

Camera

- Pan & tilt, 120x zoom HD camera captures and transmits excellent quality, HD video (1080p x 1920p)
- In-the-pipe Aries WiperCam lens cleaning system with field-replaceable wipers
- Optional dual camera lasers for accurate crack measurement
- Front camera bumpers

Cable Reel

- Truck-mounted reel with 1200' of 6-conductor cable
- 1200-pound pull strength
- Simple 6-wire reel termination
- Cable management with electronic clutch responsive to crawler movement
- Street-accessible reel controls with emergency stop button
- Quick one-button downrigger deployment
- Level wind with footage counter
- Spring-loaded retractable cable rollers for easy cable removal
- Field serviceable slipping
- Removeable drip pan
- Precisely adjustable drum tension control with caliper & floating rotor design

DESIGNED & BUILT
BY ARIES INDUSTRIES

ARIES

Corporate Office

550 Elizabeth Street
Waukesha, WI 53186
Toll Free: 800-234-7205
Phone: 262-896-7205
Fax: 262-896-7099

Western Regional

5748 E. Shields Avenue,
Suite 101
Fresno, CA 93727
Toll Free: 800-671-0383
Phone: 559-291-0383
Fax: 559-291-0463

Southern Regional

Atlanta, GA
Toll Free: 800-234-7205
Fax: 262-896-7099

raising the bar

UNDERGROUND

Aries Canada Ltd.

95 Whitmore Road, Unit 1
Vaughan, Ontario
Canada, L4L 6E2
Toll Free: 877-730-7010
Phone: 905-265-2279
Fax: 905-265-2299

Sourcewell 

Awarded Contract

Contract # 120721-ARS