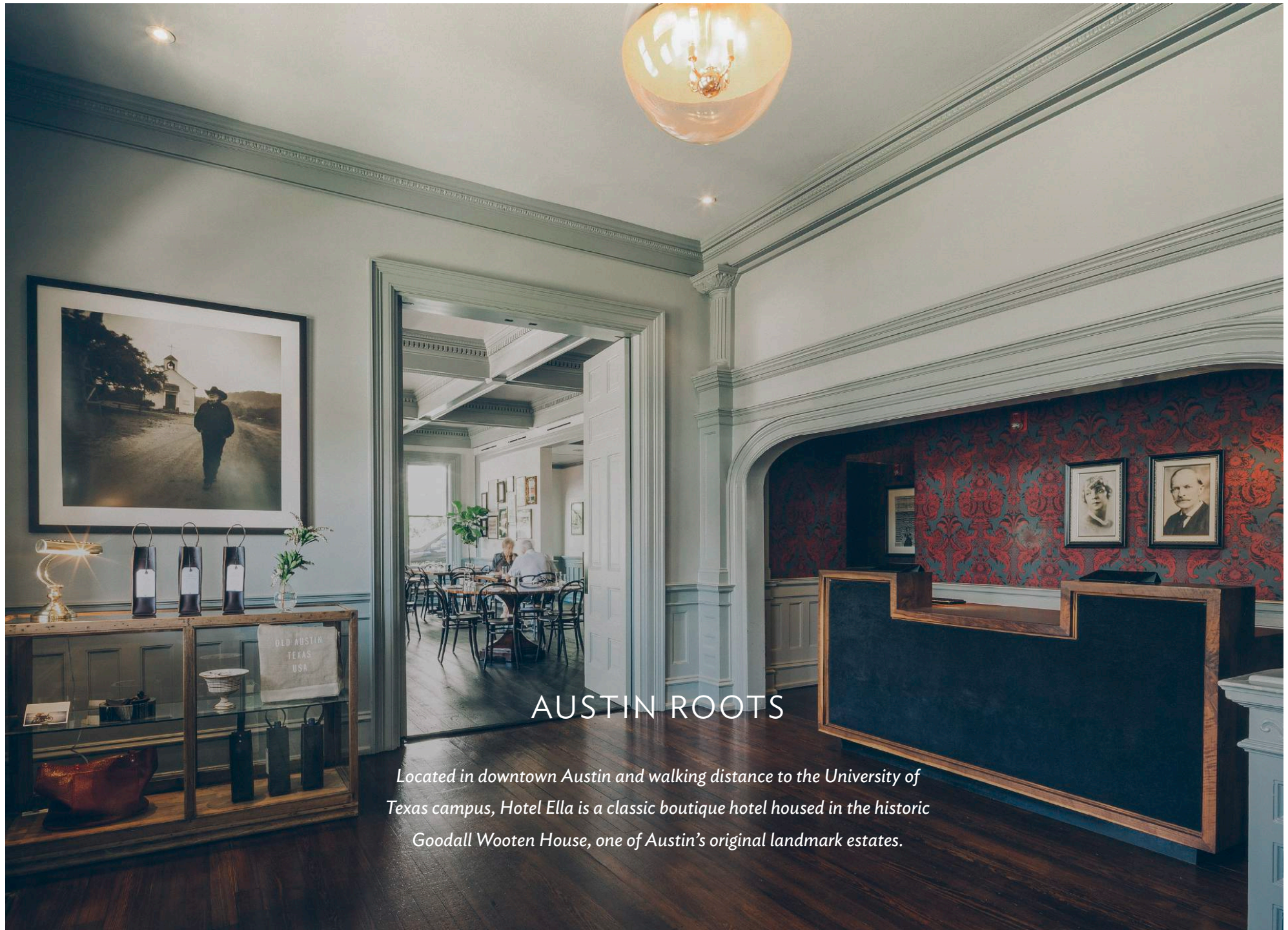




HOTEL *Ella*

HOTEL *Ella*  
AUSTIN, TEXAS





## AUSTIN ROOTS

*Located in downtown Austin and walking distance to the University of Texas campus, Hotel Ella is a classic boutique hotel housed in the historic Goodall Wooten House, one of Austin's original landmark estates.*





## EVENTS AT HOTEL ELLA

*Hotel Ella is the only boutique hotel in downtown Austin with a ballroom and the option to buy out any or all of our 47 rooms and suites or the entire grounds for your event.*

*Sit back and relax while our highly-trained, professional staff attends to every detail—from menu planning to audio-visual needs to hotel accommodations for your group.*





## THE GRAND BALLROOM

*Ella is the only boutique hotel in downtown Austin with an event space. Unlike most, our 3,593 sf Grand Ballroom is a neutral canvas, ready to transform into the centerpiece of your wedding or reception.*



## CATERING

*Your guests will enjoy the historic character of our property and our exclusive in-house catering by Goodall's Kitchen. Our culinary team will work with you to tailor a memorable menu best suited for your event.*







## GOODALL'S KITCHEN

*Named after the mansion's original owner, Goodall Wooten, Goodall's Kitchen is a sunny local American bistro. The restaurant offers a classic American dining experience that combines Hotel Ella's historic charm with a modern Austin sensibility. A diverse collection of Texas Modernist works grace the walls of Goodall's Kitchen making it a stylish setting for brunches, birthdays, rehearsal dinners and more.*



## THE PARLOR BAR

*An avid pistol collector, Goodall Wooten's world-renowned collection now resides at the Harry Ransom Center at the University of Texas, just three blocks away. However, you can still see his blunderbuss—and its namesake cocktail—in the Hotel Ella Parlor Bar. Enjoy a blunderbuss (or two) in a refined and intimate setting when you host your next event in the Parlor Bar.*





A photograph of a wrap-around veranda with white columns and a wicker sofa, serving as a backdrop for afternoon tea. The veranda is furnished with a wicker sofa, a wooden coffee table, and a small round side table. A table in the foreground is set with a white tablecloth, stacks of white plates, and a wooden serving cart with pastries and fruit. The background is filled with lush green trees.

## THE MANSION VERANDA.

*In 1897, when Goodall married Ella Newsome, Ella's father built their house as their wedding gift. The columns—an anniversary gift, naturally—were added later using the same stone carver employed to construct the legendary Biltmore Mansion in Asheville. Today these historic columns still surround the wrap-around veranda making it an ideal backdrop for afternoon tea, bridal brunches and outdoor gatherings.*





## THE LAWN

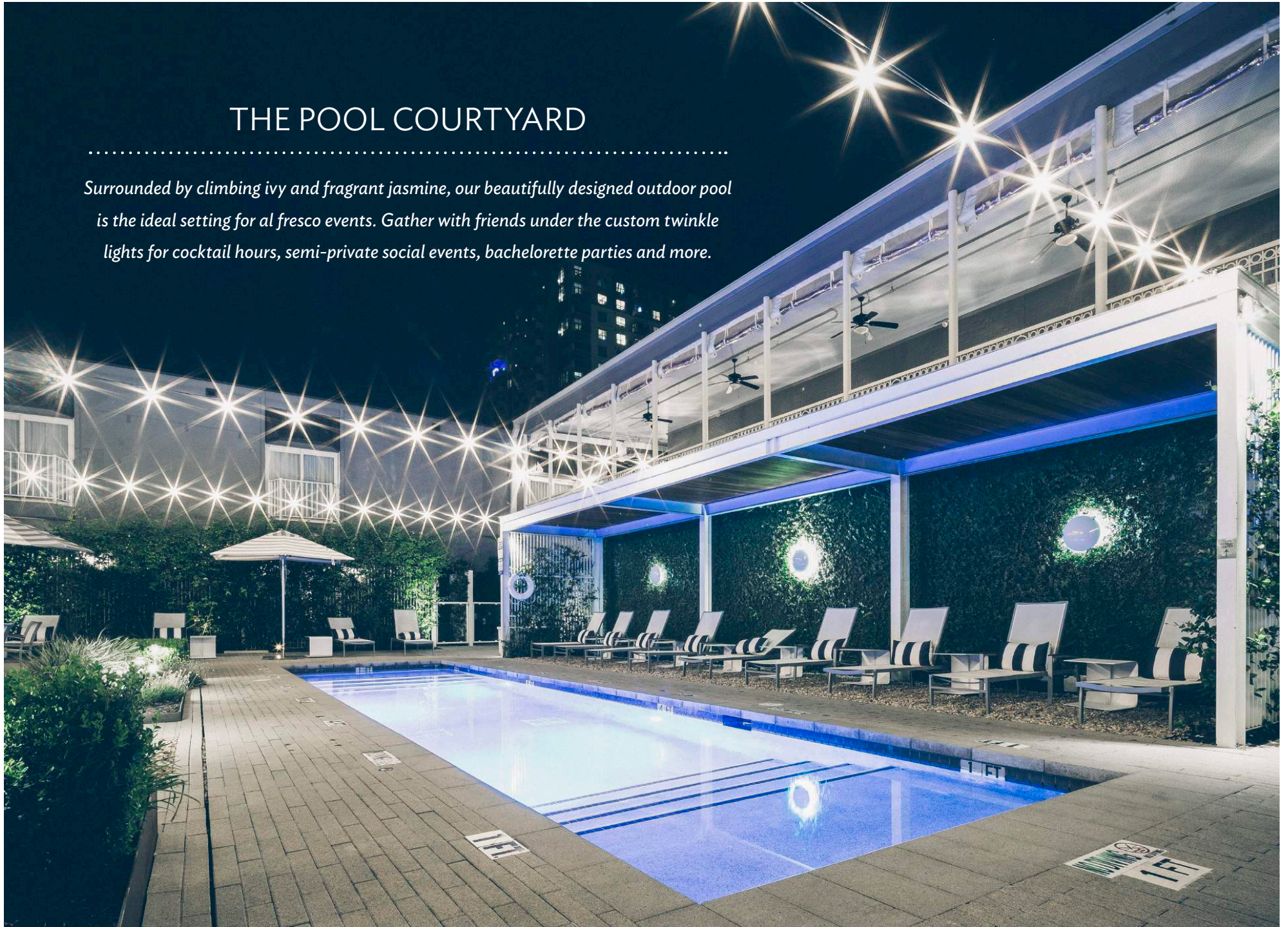
*We take Ella's legacy of setting a high standard in style seriously. Carry on her tradition by hosting your wedding ceremony, garden party, fancy tailgate or upscale picnic on our idyllic front lawn. The expansive lawn features lush landscaping and the option to rent our custom tent.*



## THE POOL COURTYARD

---

*Surrounded by climbing ivy and fragrant jasmine, our beautifully designed outdoor pool is the ideal setting for al fresco events. Gather with friends under the custom twinkle lights for cocktail hours, semi-private social events, bachelorette parties and more.*





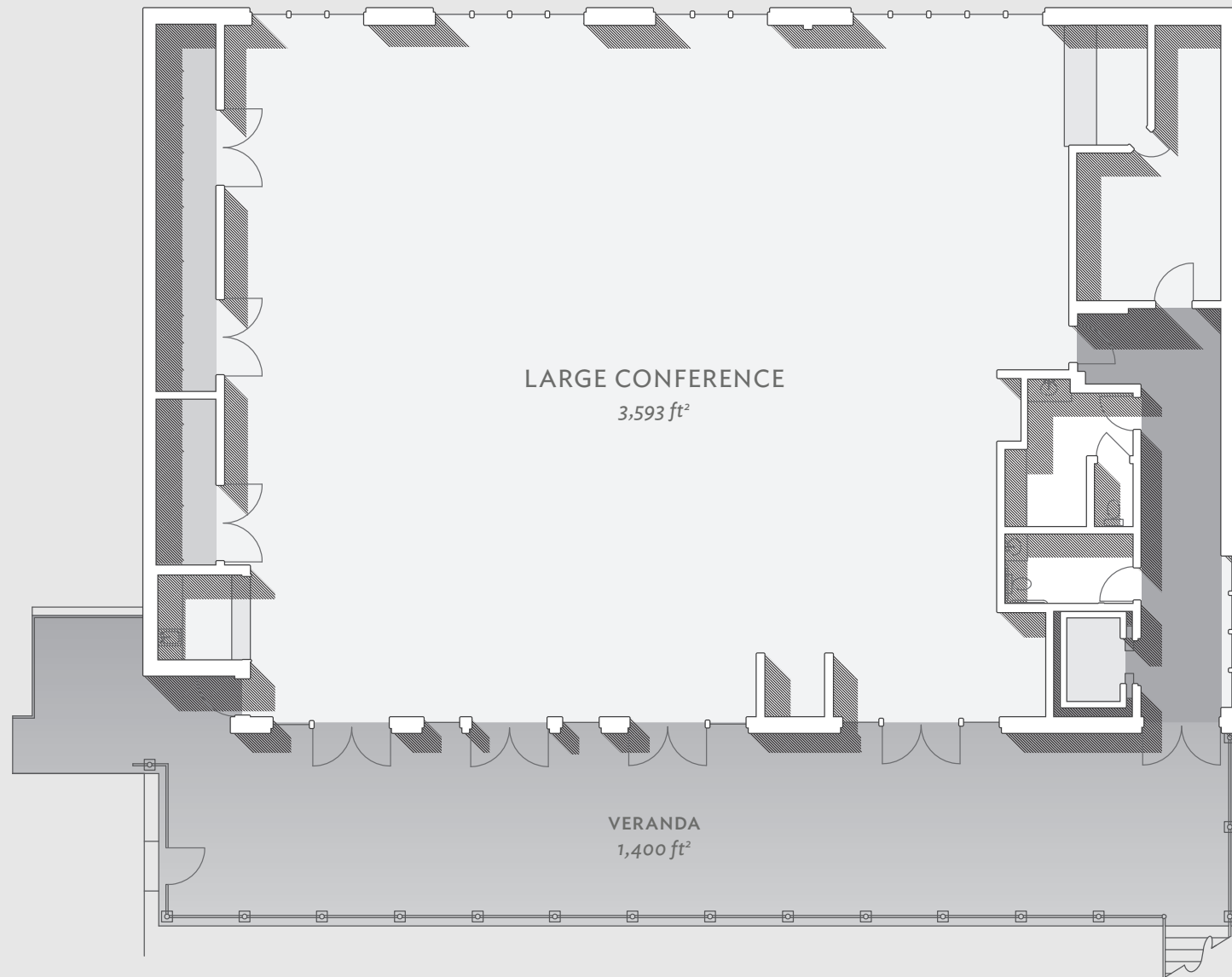


## GUESTROOMS & SUITES

*Hotel Ella features 47 luxuriously appointed guestrooms and suites with premium amenities. Each room features custom-designed furniture, complimentary Wi-Fi, a 47-inch LED television, twice-daily housekeeping and a thoughtfully curated minibar. Enjoy 100 percent combed and ring-spun cotton terry bath sheets, microfiber bathrobes, and hair and body products by The Vintage Round Top. Casual American bistro Goodall's Kitchen provides in-room dining between 7 a.m. and 10 p.m. daily.*

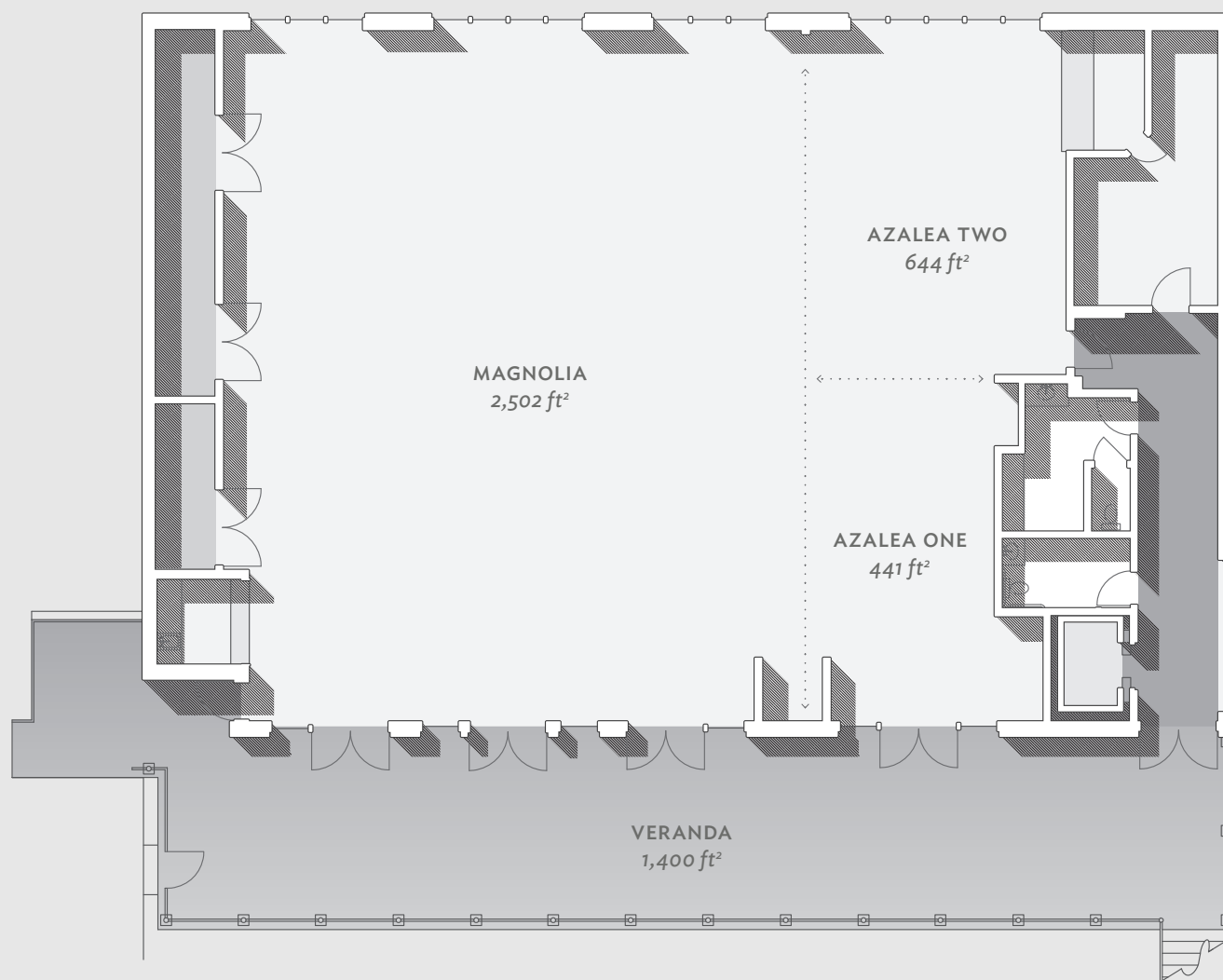


# HOTEL ELLA'S GRAND BALLROOM





## HOTEL ELLA'S BALLROOM DIVIDED



*Ella is the only boutique hotel in downtown Austin with an event space. Unlike most, our 3,593 ft² Grand Ballroom is a neutral canvas, ready to transform to suit your event with large spaces and breakout rooms alike, depending on your configuration and needs.*



## RENTAL INCLUDES

*Black linens*  
*White linens*  
*60" round tables*  
*36" round tables*  
*6' tables*  
*8' tables*  
*Chiavari chairs*  
*White folding chairs*  
*Cocktail rounds*  
*China*  
*Glassware*  
*Silverware*  
*Serving ware*  
*Lounge vignettes*

## AV CAPABILITIES

*In-house sound system for ambient music*  
*8ft. screen & projector*  
*60" LCD monitor*  
*Laser pointer*  
*1 lavalier mic*  
*1 hand held mic*  
*Podium*  
*Flip charts & markers*  
*PA system*



## HOTEL ELLA'S EVENT SPACES & CAPACITIES

<i>Meeting Room</i>	<i>Dimensions</i>	<i>Ceiling Height</i>	<i>Square Feet</i>	<i>Reception Capacity</i>	<i>Banquet Capacity</i>	<i>Theater Capacity</i>	<i>Classroom Capacity</i>	<i>U-Shaped Capacity</i>
<i>The Grand Ballroom</i>	<i>52' x 65'</i>	<i>14'</i>	<i>3,380</i>	<i>300</i>	<i>250</i>	<i>285</i>	<i>150</i>	<i>60</i>
<i>The Magnolia Room</i>	<i>52' x 45'</i>	<i>14'</i>	<i>2,340</i>	<i>200</i>	<i>175</i>	<i>200</i>	<i>100</i>	<i>40</i>
<i>The Azalea Room</i>	<i>52' x 20'</i>	<i>14'</i>	<i>1,040</i>	<i>60</i>	<i>50</i>	<i>50</i>	<i>30</i>	<i>24</i>
<i>Grand Ballroom Veranda</i>	<i>81' x 14'</i>	<i>12'</i>	<i>1,134</i>	<i>100</i>	<i>64</i>	<i>125</i>	<i>n/a</i>	<i>n/a</i>
<i>Goodall's Kitchen</i>	<i>33' x 26'</i>	<i>11'</i>	<i>858</i>	<i>60</i>	<i>45</i>	<i>n/a</i>	<i>n/a</i>	<i>n/a</i>
<i>Goodall's Veranda</i>	<i>37' x 10'</i>	<i>11'</i>	<i>370</i>	<i>90</i>	<i>84</i>	<i>n/a</i>	<i>n/a</i>	<i>n/a</i>
<i>Parlor Bar</i>	<i>15' x 16'</i>	<i>11'</i>	<i>240</i>	<i>25</i>	<i>10</i>	<i>15</i>	<i>n/a</i>	<i>n/a</i>
<i>Ella Parlor</i>	<i>15 x 17'</i>	<i>11'</i>	<i>240</i>	<i>25</i>	<i>10</i>	<i>15</i>	<i>n/a</i>	<i>n/a</i>
<i>Ella Wine Room</i>	<i>11' x 11'</i>	<i>12'</i>	<i>121</i>	<i>6</i>	<i>6</i>	<i>n/a</i>	<i>n/a</i>	<i>n/a</i>
<i>Pool Courtyard</i>	<i>75' x 48'</i>	<i>n/a</i>	<i>2,800</i>	<i>150</i>	<i>62</i>	<i>n/a</i>	<i>n/a</i>	<i>n/a</i>
<i>Ella Lawn</i>	<i>12'0" x 83'</i>	<i>n/a</i>	<i>9,960</i>	<i>300</i>	<i>180</i>	<i>150</i>	<i>n/a</i>	<i>n/a</i>
<i>Pecan Tree Table</i>	<i>25' x 25'</i>	<i>n/a</i>	<i>625</i>	<i>25</i>	<i>8</i>	<i>n/a</i>	<i>n/a</i>	<i>n/a</i>
<i>Mansion Side Veranda (L Shape)</i>	<i>48' x 10'</i>	<i>11'</i>	<i>480</i>	<i>50</i>	<i>24</i>	<i>n/a</i>	<i>n/a</i>	<i>n/a</i>



## LET'S GET TO WORK.

---

*In order to reserve event space for your next  
meeting or event, please contact:*

*Sales Office*  
*events@hotelella.com*  
*512-495-1800*

---