

2002 Beech King Air 350, S/N FL-355



Brad Stancil
+1 (317) 815-9403
Info@HolsteinAviation.com



HOLSTEIN Aviation™

member of
NBAA

IADA
ACCREDITED
DEALER

NAFA
NATIONAL ASSOCIATION
OF AVIATION

Proven Professionals. Trusted Partners.

2002 Beech King Air 350

S/N FL-355
N685BC

AIRCRAFT LISTING DETAILS:

Total Hours: 5,057.0

Total Landings: 6,183

Engines: Pratt & Whitney PT6A-60A

#1

#2

Total Hours: 5,029.9 5,029.9

Engine Cycles: 6,129 6,129

Serial Numbers: PCE-PK0460 PCE-PK0458

Propellers: Hartzell HC-B4MP-3C

Total Hours: 26.8 3,248.8

Serial Numbers: FWA-5115 FWA-4281

AIRCRAFT HIGHLIGHTS:

- Two US Corporate Owners
- WAAS / ADS-B Out
- Skywatch TCAS
- Solid State DTU (UBS)
- TRAXXALL Maintenance Tracking Program
- No Known Damage History

FEATURES/OPTIONS:

- RVSM
- Aluminum Case installed at Engine Overhaul
- Solid State DTU (UBS)
- Bose Headsets
- Air Conditioning

Specifications subject to verification upon inspection. Aircraft subject to prior sale without notice.

2002 Beech King Air 350

S/N FL-355

N685BC

AVIONICS:

- Collins Pro Line II EFIS
- Dual Collins Electronic Flight Display EFD-85
- Multi-Function Display MFD-85B
- Collins Electronic Flight Display EFD-74
- Autopilot Computer APC-65J
- Dual Comm VHF-22C (CTL Control)
- Dual NAV VIR 32 (CTL-32 Control)
- Dual DME Indicators IND-42A and 42C
- Dual Transponders TDR-94 (CTL 92 Control)
- Radio Altimeter ALT-55B
- Weather Radar WXP 850A
- Stormscope WX-1000
- EGPWS Honeywell Mark VI
- Skywatch TCR-899
- ADF 60A (CTL 62 Control)
- Air Data Computer ADC-85A
- Encoding Altimeter ALI-80A
- Cockpit Voice Recorder DK-100
- Artex 406 ELT
- UNS-1Lw (WAAS LPV) 1000.8
- ADS-B Out
- New Boots

INSPECTION STATUS:

- Detailed Inspection 1 complied with @ 4988.6 hours/March 2021; next due @ 5388.6 hours/March 2023
- Detailed Inspection 2 complied with @ 4988.6 hours/March 2021; next due @ 5388.6 hours/March 2023
- Detailed Inspection 3 complied with @ 4870.1 hours/March 2020; next due @ 5270.1 hours/March 2022
- Detailed Inspection 4 complied with @ 4870.1 hours/March 2020; next due @ 5270.1 hours/March 2022
- Landing Gear OVH complied with @ 6038 landings/August 2020; next due @ 14038 landings/August 2026
- LH Engine HSI complied with @ 4626.6 engine hours; next due @ 6426.6 engine hours
- RH Engine HSI complied with @ 3562.0 engine hours; next due @ 5362.0 engine hours
- LH & RH Engine OVH complied with @ 3562.0 engine hours; next due @ 7162.0 engine hours
- LH Propeller OVH complied with @ 5042.4 hours/June 2021; next due @ 8042.4 hours/June 2026
- RH Propeller OVH complied with @ 2629.5 hours/Sept 2017; next due @ 5629.5 hours/Sept 2022

MAINTENANCE PROGRAMS:

- TRAXXALL Maintenance Tracking Program

Specifications subject to verification upon inspection. Aircraft subject to prior sale without notice.

2002 Beech King Air 350

S/N FL-355
N685BC

INTERIOR:

New Interior March 2018 by Stevens Aviation. Eight Passengers with additional 9th seat including the Belted Lavatory. Four (4) 110 Outlets. Fwd Galley / Mid Cabin Pyramid Cabinets.

EXTERIOR:

New Paint 2018 by Stevens Aviation. Overall Matterhorn White with Imperial Red and Sable Metallic stripes.

Specifications subject to verification upon inspection. Aircraft subject to prior sale without notice.

2002 Beech King Air 350

S/N FL-355

N685BC



Specifications subject to verification upon inspection. Aircraft subject to prior sale without notice.

2002 Beech King Air 350

S/N FL-355

N685BC



Specifications subject to verification upon inspection. Aircraft subject to prior sale without notice.

2002 Beech King Air 350

S/N FL-355
N685BC



Specifications subject to verification upon inspection. Aircraft subject to prior sale without notice.

2002 Beech King Air 350

S/N FL-355
N685BC



Specifications subject to verification upon inspection. Aircraft subject to prior sale without notice.

2002 Beech King Air 350

S/N FL-355
N685BC



Specifications subject to verification upon inspection. Aircraft subject to prior sale without notice.

2002 Beech King Air 350

S/N FL-355
N685BC



Specifications subject to verification upon inspection. Aircraft subject to prior sale without notice.

2002 Beech King Air 350

S/N FL-355

N685BC



Specifications subject to verification upon inspection. Aircraft subject to prior sale without notice.

2002 Beech King Air 350

S/N FL-355

N685BC



Specifications subject to verification upon inspection. Aircraft subject to prior sale without notice.

2002 Beech King Air 350

S/N FL-355

N685BC



Specifications subject to verification upon inspection. Aircraft subject to prior sale without notice.

MEET THE MANAGEMENT TEAM

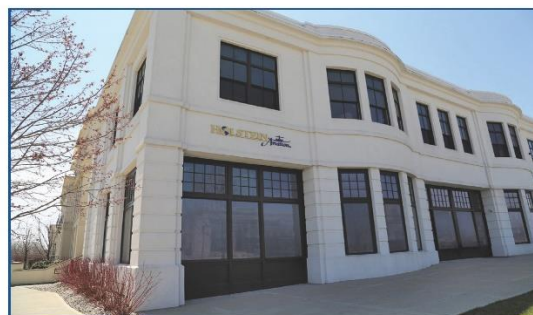


About Holstein Aviation

- ▶ Over \$10 Billion Dollars In Sales
- ▶ Ranked Top 10 Brokerage Firms Worldwide For Transaction Volume
- ▶ 300 Years Of Domestic And International Experience
- ▶ 4,700 Transactions Completed



Proven Professionals. Trusted Partners.



Holstein Aviation, Inc.
4000 West 106th Street, Suite 160
Carmel, IN 46032 USA

+1 (317) 815-9403
1 (877) 530-JETS (5387) US toll free
www.holsteinaviation.com

Specifications subject to verification upon inspection. Aircraft subject to prior sale without notice.