



OWN A ELEGANT CAR WASH IN CENTRAL TEXAS!



- The owners say "Quality is how we built our business."
- "We are in the people business, not the car wash and detail business, our customers are number 1, and nothing else matters!"
- Key employees are a bonus and ready to continue the tradition.
- 18 very intricate security cameras installed for \$120,000.
- Complete Service including: wash, lube, detail, inspection and some repairs
- Located in very high income area and the average sales ticket is over \$50!
- Impeccable reputation for many years.
- Only competitor, is over 5 miles away but not really a comparative competitor.
- Brokers opinion is that there will not be another car wash built in the Bee Caves area.
- Across the street from the Galeria Mall, HEB, Starbucks etc.
- Tremendous Traffic Count

SILVERSTONE

COMMERCIAL REAL ESTATE

512-416-1000

elliott@silverstoneco.com | www.silverstoneco.com

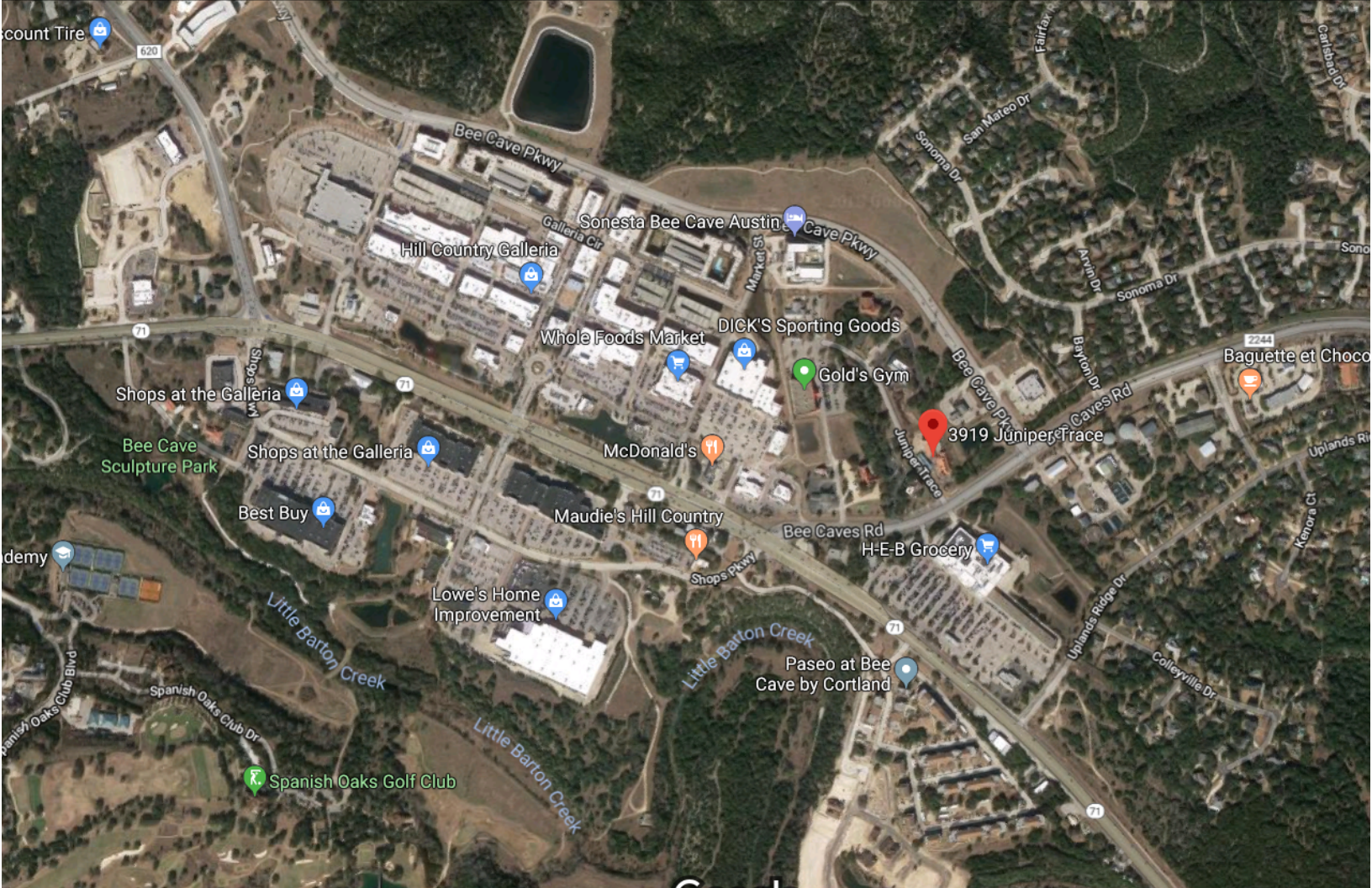
PROPERTY PHOTOS



EQUIPMENT DETAILS



- * DRB car wash system
- More Details Coming Soon
- * PECO Tunnel Equipment
- More Details Coming Soon



ABOUT BEE CAVE

The City of Bee Cave is rich in history. The City, as we know it today, did not exist until 1987, but the idea of an area where people could live without the influence of "big city" government has been the area's "calling card" for over 140 years. Bee Cave is a city located in Travis County, and within with a huge retail environment!

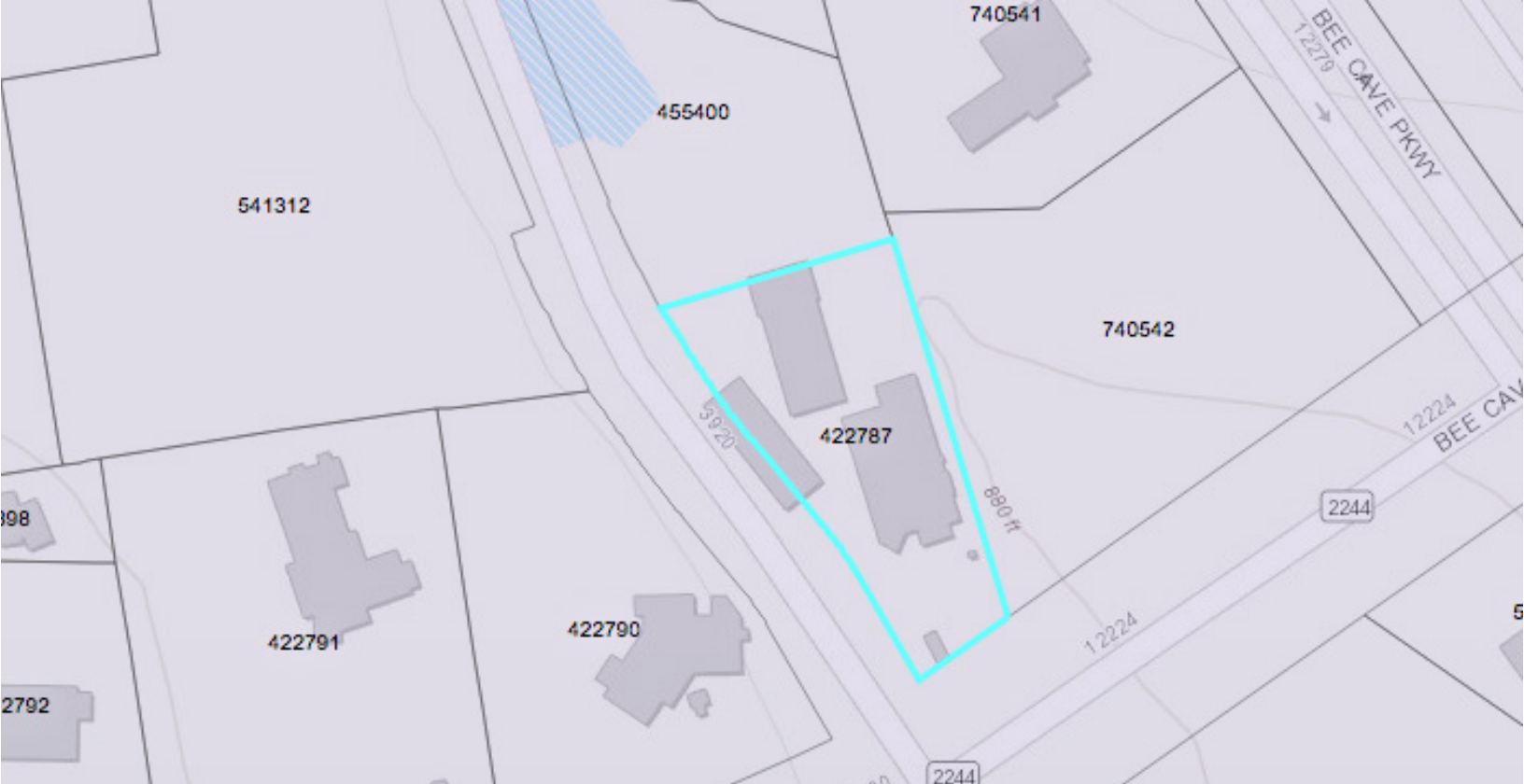
Bee Cave compared to Texas state average:

- Median household income above state average.
- Median house value significantly above state average.
- Unemployed percentage significantly below state average.
- Median age above state average.
- Foreign-born population percentage significantly above state average.
- Length of stay since moving in significantly below state average.
- House age significantly below state average.
- Number of college students above state average.
- Percentage of population with a bachelor's degree or higher significantly above state average.
- Estimated median household income in 2016: \$101,455
- Mean prices in 2016: All housing units: \$577,211



STORES NEARBY

Adorn	Cinemark	Jersey Mike's Subs
allstar burger	Claire's	Jimmy John's
amy's ice cream	Color Me Mind	Jos. A. Bank
anthony's patio	Dick's Sporting Goods	Justice
at&t	Eddie Bauer	Learning Express Toys
Austin Natural Mattress	Edward Jones	Lens Crafters
Banana republic	Einstein Bros Bagels	Loft
Barnes& Noble Booksellers, and cafe	European Wax Center	Lure by Y & F
Barre 3	Everything But Water	Luxury Nails
bath and Bdy Works	Fab'rik	Madam Mam's
BB&T	Francesca's	Mana Culture
Bee Cave Coffee	Freedom Solar Power	Guest Services
Blo Blow Dry Bar	Frost bank	Milk and Honey
Buenos Aires Cafe	Frost	Panera Bread
CafeBlue	Galleria Eyecare	Soma
California Closets	Gatsbys	Schmidt Family Barbecue
The Candy jar	The Ginger Man	Sunglass Hut
Central Plaza	H&M	Toni & Guy HairDressing
Chicos	Hand & Stone	Verizon
Chili's	Hill Country Dentists and Or- thodontics	Victorias Secret
Chisos Grill	James Avery Jewelry	Whole Foods Market
		And More!



BANKS IN BEE CAVE (2011 DATA)

- **JPMORGAN CHASE BANK, National Association:** Heb Bee Cave Fsc Branch at 12400 West Highway 71, branch established on 1999/10/25. Info updated 2011/11/10: Bank assets: \$1,811,678.0 mil, Deposits: \$1,190,738.0 mil, headquarters in Columbus, OH, positive income, International Specialization, 5577 total offices, Holding Company: Jpmorgan Chase & Co.
- **COMPASS BANK:** Bee Cave Branch at 12524 F.M. 2244, branch established on 1997/03/17. Info updated 2011/02/24: Bank assets: \$63,107.0 mil, Deposits: \$46,232.4 mil, headquarters in Birmingham, AL, negative income in the last year, Commercial Lending Specialization, 720 total offices, Holding Company: Banco Bilbao Vizcaya Argentaria, S.A.
- **BROADWAY NATIONAL BANK:** Bee Cave Branch at 12101 Bee Caves Rd, branch established on 2009/02/06. Info updated 2006/11/03: Bank assets: \$2,465.8 mil, Deposits: \$2,085.7 mil, headquarters in San Antonio, TX, positive income, Commercial Lending Specialization, 40 total offices, Holding Company: Broadway Bancshares, Inc.
- **WELLS FARGO BANK, National Association:** Bee Cave Galleria at 12921 Galleria Circle, branch established on 2007/11/26. Info updated 2011/04/05: Bank assets: \$1,161,490.0 mil, Deposits: \$905,653.0 mil, headquarters in Sioux Falls, SD, positive income, 6395 total offices, Holding Company: Wells Fargo & Company