

For Sale

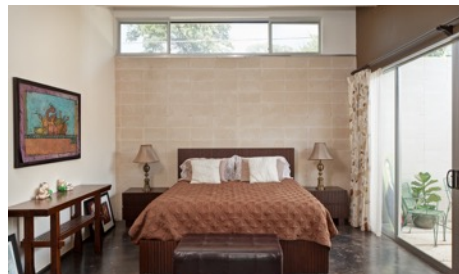
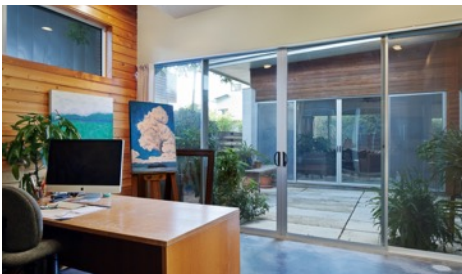
1011 E 15th Street

KRDB Courtyard Home - 78702
2210 SF [owner] • 3 bed / 2.5 bath
MLS #: 7961193



Skout^x

Roland Galang
Broker | CNE, LEED AP
512 791.1584
Roland@SkoutAustin.com



1011 E 15th is an architectural gem designed by award-winning KRDB. Situated on a corner lot, this modern one-story courtyard home resides in the coveted historic Swede Hill neighborhood. The spacious open floor plan affords easy living and entertaining around a central courtyard. With a convenient urban core location, 1011 E 15th Street is ~0.23 mile to I-35; ~0.5 mile to future Dell Medical Center; ~0.6 miles to UT Austin; ~0.9 miles to State Capitol; and ~7.5 miles to airport. Easy access to popular eastside dining & entertainment spots. A unique East Austin find.

Quick Facts

- Exterior: 12" load-bearing burnished CMU & cypress siding
- Metal roof w/ solar panels (low electric bills)
- Interior design details
 - exposed CMU walls
 - high sloping ceilings w/ angled lighting cove
 - strategically-placed skylights
 - commercial-grade residential windows w/ trim less detail
 - custom bamboo cabinets
 - floor-to-ceiling colored tiles in bath
- Two-car garage

All information contained herein is deemed reliable but not guaranteed. Buyer must verify.

