

For Sale

73 San Saba Street, #D

“The Lighthouse”

East Austin - 78702

1700 SF [TCAD] • 3 bed / 2.5 bath

Skout^x

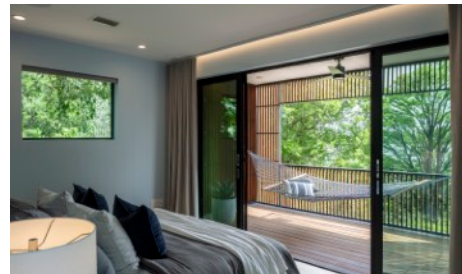
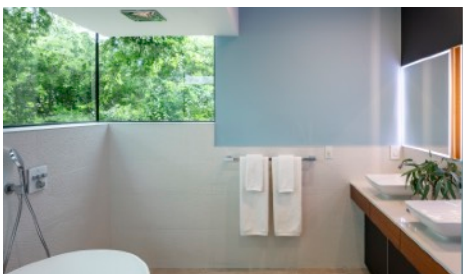
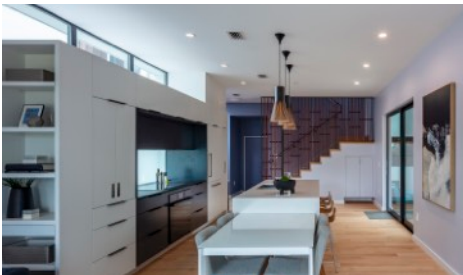
Roland Galang

Broker | CLHMS, LEED AP

512 791.1584

Roland@SkoutAustin.com

Waterfront
Home w/
Lake Views



73 San Saba D is a designer-envisioned waterfront home brought to life by award-winning Murray Legge Architecture. Nestled along the Colorado River in East Holly neighborhood, this home embodies zen minimalism and connection with nature. The owner named it “The Lighthouse” to reflect the quality of light as a defining character of the house. It is designed to bring the outdoors in with thoughtfully framed views of the lake and trees. The primary bedroom opens onto a 70-SF shaded balcony. The ensuite bath features frameless windows above a walk-in rain shower. Second bedroom, designed as an office, is anchored by large frameless window with panoramic views - inspire serenity & creativity. A rare private oasis in the heart of East Austin.

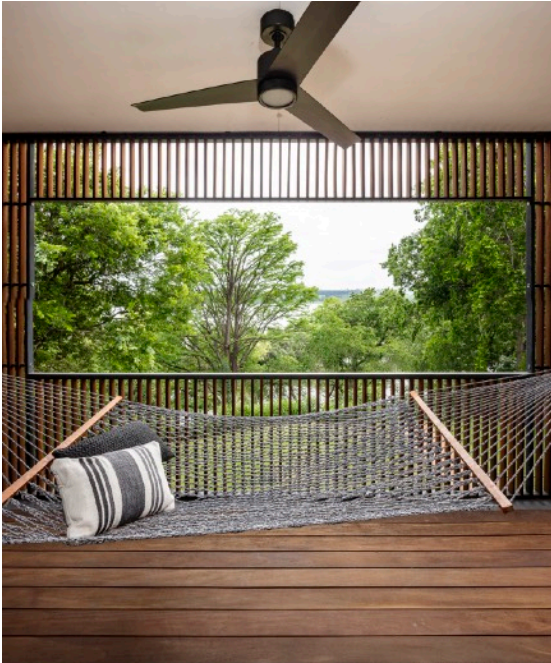
Quick Facts

- Kitchen: built-in appliances (Miele & Decor); steam convection oven; induction cooktop; quartz counters; glass backsplash; custom mahogany cabinets
- Primary Bath: luxury stone resin bathtub; walk-in rain shower; quartz counters; custom mahogany cabinets
- Flooring: ceramic tiles in baths; maple throughout
- Special Features: home theater projector & 5.1 sound system; automated shades/curtains in primary & living; shaded balcony w/ fan
- Amenities: private path to lakeside paddleboard launch; shared pool w/ exercise jets (shared w/ only one other home)
- Finished garage doubles as studio; one covered carport

All information contained herein is deemed reliable but not guaranteed. Buyer must verify.



“A Designer’s Vision - “The Lighthouse” Philosophy (73 San Saba #D)



“The genesis for this project was a desire for more connection to nature. I grew up near the beach and have lived close to water most of my life, so when it came time to build in Austin, I knew the home had to be beside the water.

I was searching for a location for my home by canoe, when I found the only street in Austin — end of a cul-de-sac, with access to the Lady Bird Lake — a hidden gem in my favorite area, the Holly neighborhood.

A private path leads down to the lake, where I can launch a paddle board straight from the property. Only a 5-minute walk to the Wishbone Bridge Canterbury entrance to the Ann & Roy Butler hike-n-bike trail. Easy walk to restaurants & cafes.”

I arrived at three core principles for the design of my home and they shaped every decision. I worked with the award-winning studio Murray Legge Architecture to bring this vision to life.

>> Principle 1: Connected to the landscape, yet private

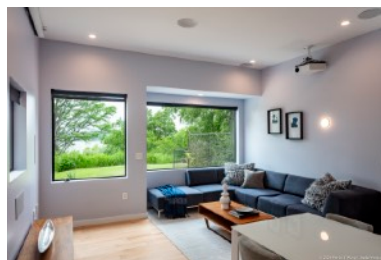
“The home opens fully to the views, but light and sightline are carefully managed throughout. Windows, skylights, & wooden louvres were placed with precision to filter the harsh summer sun while filling the interior with natural light that shifts and changes as the day moves. The quality of light became the defining character of the home, which is why I named it The Lighthouse.”

>> Principle 2: An inspiring place to live, think & work

“One bedroom was designed as an office, anchored by a large frameless window with panoramic views of the lake and the tree canopy. The garage was conceived as a flex studio, sunlit & open, with lake views of its own. The living room is a generous, uncluttered space equally suited to entertaining, or to quietly sitting and watching the birds. The best view in the house, though, belongs to the primary bedroom, with full-height doors that open onto a private balcony.”

>> Principle 3: Simple forms, considered touchpoint

“The home was built from pure, uncluttered forms, balanced by the warmth of wood and other details. Every fitting and appliance was intentionally selected to be clean and minimal, but soft and inviting to the touch. Anything that distracts is hidden. The primary bedroom door disappears into the wall when open. The ensuite bathroom was inspired by outdoor baths encountered on travels, made to work in a semi-urban setting. Step into the shower and you feel surrounded by trees. Outdoor, the pool looks straight toward the lake and includes a swim jet for training at home.”



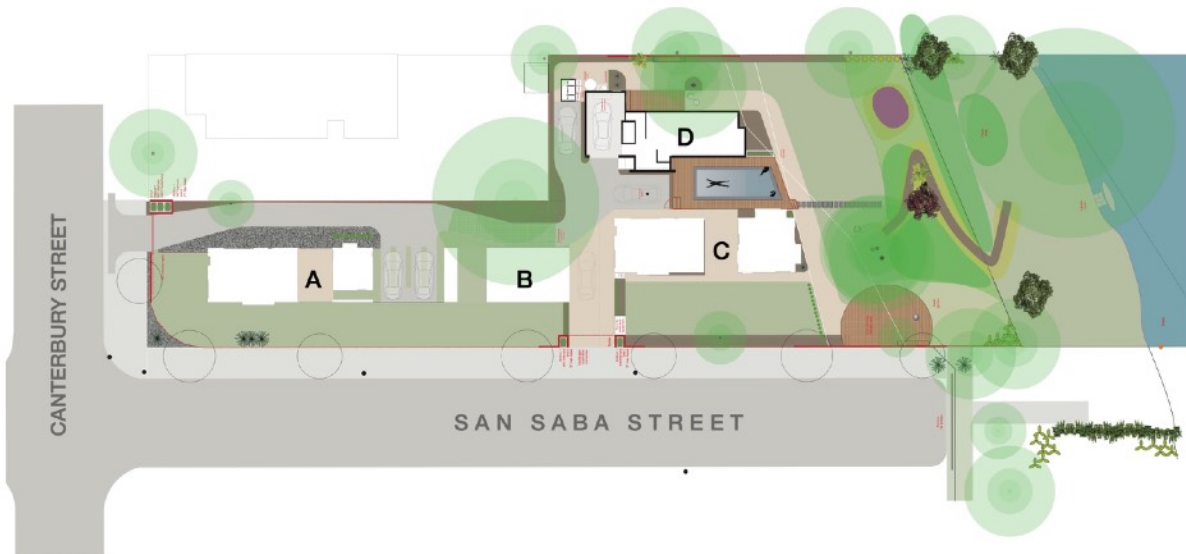
73 San Saba #D - Floor Plan



All information contained herein is deemed reliable but not guaranteed. Buyers must verify.

Roland Galang | 512 791.1584 | roland@skoutaustin.com

73 San Saba - Site Map



All information contained herein is deemed reliable but not guaranteed. Plans are not drawn to scale. For reference only.

Roland Galang | 512 791.1584 | roland@skoutaustin.com