

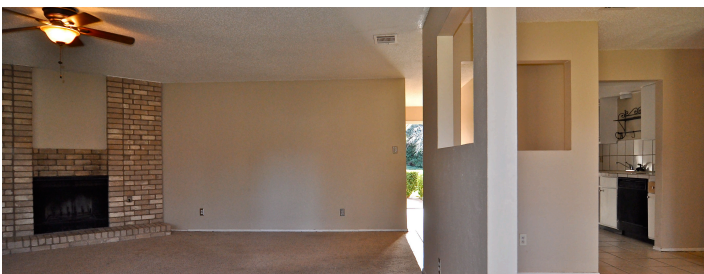
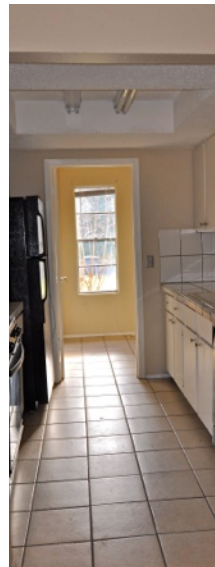
For Sale

2602 Burly Oak Dr.

Cherry Creek - 78745
1349 SF • 3 bed / 2 bath
MLS #: 7554042

Skout^x

Roland Galang
Broker | GRI, LEED AP
512 791.1584
RolandGalang@mac.com



2602 Burly Oak is a 3 bedroom/2 bath single-family home, conveniently located in the quiet neighborhood of Cherry Creek in South Austin. Features open living and dining space, fire place, galley-style kitchen with pantry, laundry room, attached 2-car garage. Large fenced yard. Easy access to major thoroughfares and dining, shopping, & entertainment along South Lamar Boulevard.

Quick Facts

- One story, open floor plan
- Full-size laundry/utility room
- Convenient location
 - ~2 miles to South MoPac Expressway
 - ~5 miles to South Lamar Boulevard
 - ~6 miles to St. Edwards University (on South Congress)
 - ~8 miles to Texas State Capitol
 - ~12 miles to UT Austin campus

All information contained herein is deemed reliable but not guaranteed. Buyer must verify.

