

For Sale

904 Spence Street

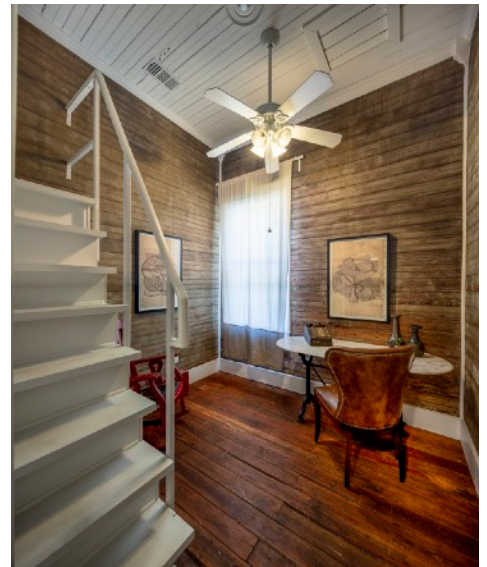
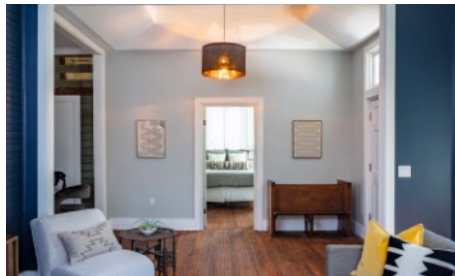
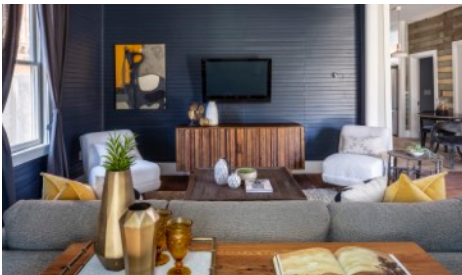
East Austin - 78702
1262 SF [TCAD]
3 bed / 2 bath
MLS #: 3870009



Scan for
Virtual Tour

Skout^x

Roland Galang
Broker | CLHMS, LEED AP
512 791.1584
Roland@SkoutAustin.com



904 Spence is a beautifully renovated early 20th century bungalow located in the Willow Spence Street Historic District. Meticulously updated with contemporary details while retaining its original touches and charm. Original wood flooring and reclaimed wood paneling on walls. Gated sizable yard with one-car garage and additional parking space. Endless opportunities for enhancing your outdoor space. A special East Austin gem. Convenient location: within one mile to Saltillo Plaza (Whole Foods, Target, JuiceLand, Snooze); E Sixth Street; Rainey Street District; Austin Convention Center. Within 2 miles to Capitol; UT Dell Medical School & UT Austin. ~15 minutes to Airport.

Quick Facts

- Primary Bath Addition [2021]: dual vanity; quartz counters; tile bath & flooring
- Kitchen: Stainless appliances w/ gas range; butcher block counters; glass tile backsplash
- 3rd Bed/Office: loft bed accessible via built-in stairs
- Energy Efficiency: Nest thermostat; tankless water heater; double-pane low-e windows
- Freshly painted exterior [2022]
- One-car garage and shed within gated sizable back yard (alley access)

All information contained herein is deemed reliable but not guaranteed. Buyer must verify.

