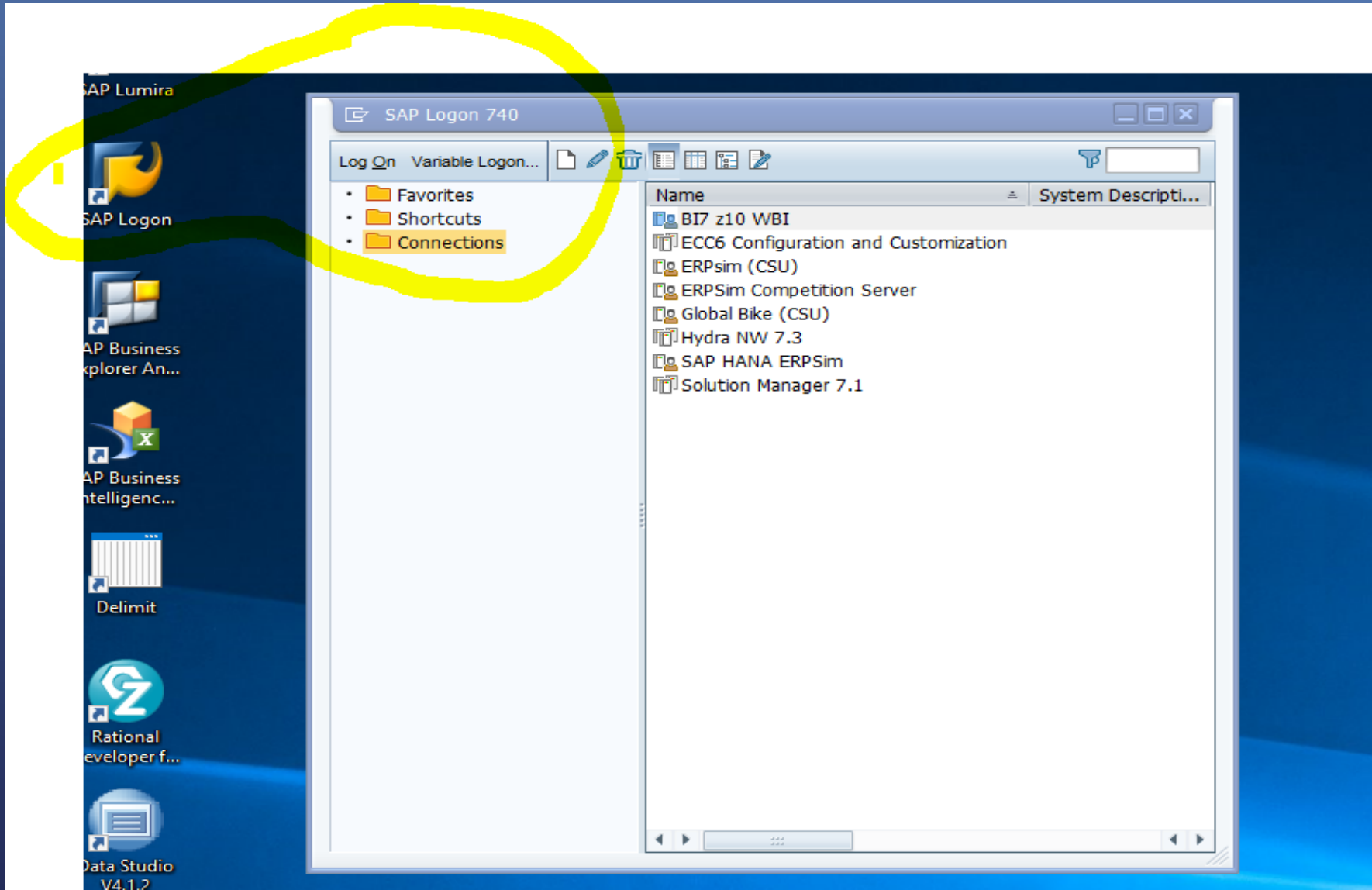
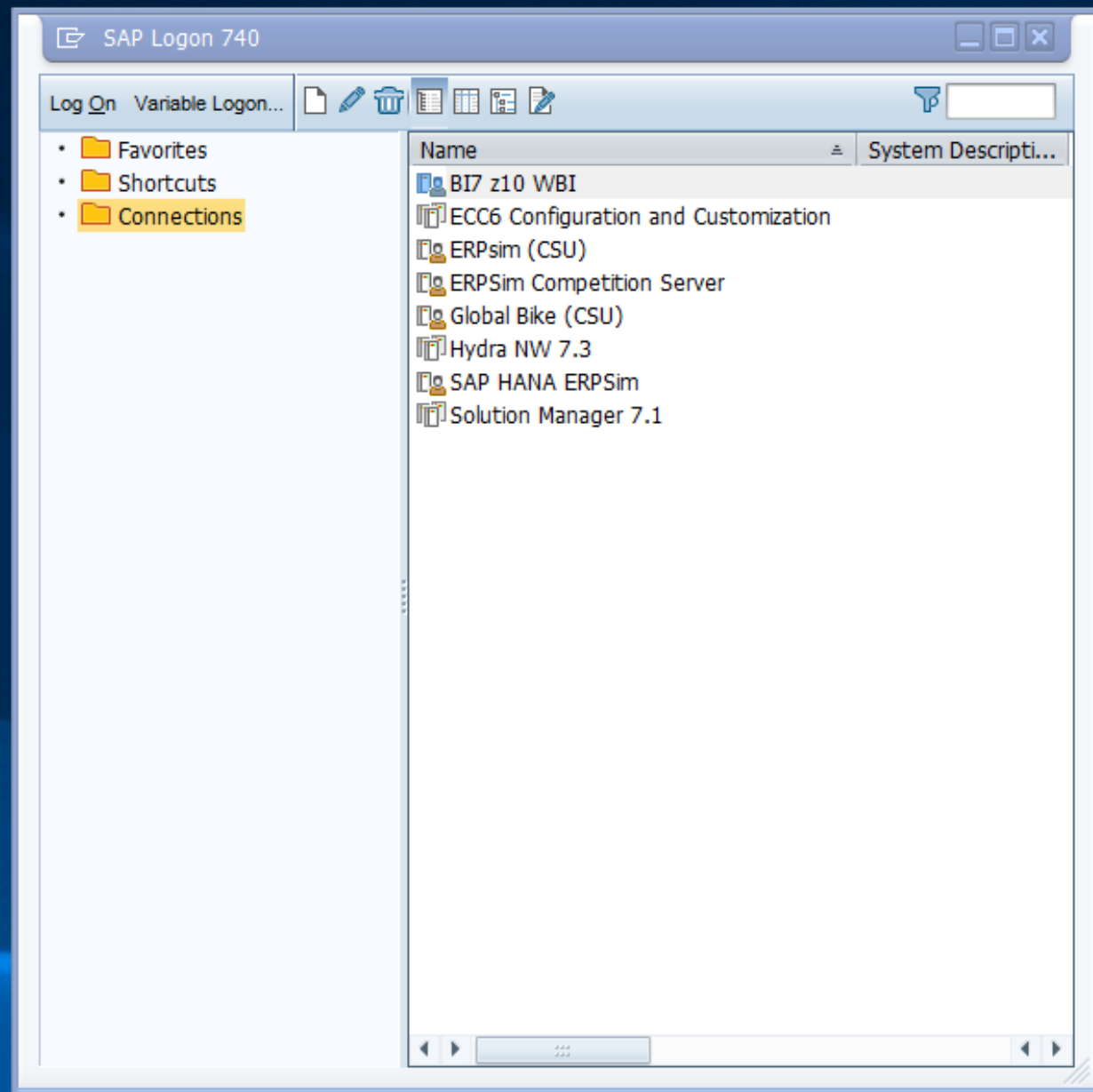


ACCESS TO BIG DATA/GUI: HOW TO CONNECT WITH WALMART, SAM CLUB, AND TYSON DATA

Jie Fowler

Valdosta State University





Create New System Entry

Select one of the available systems from the list below. If you choose the first entry, you can specify the system parameters yourself.



Search For:

Clear Filter

SID

Description



User Specified System

If a SAProuter other than the default is required for the specified system, select the other entry from SAProuter dropdown list.

SAProuter:

Help

Cancel

< Back

Next >

Finish

System Entry Properties

Connection

Network

Code Page

Choose the connection type and change the system parameters as required. Delete the old description if you want the system to propose a description. Button OK is only active when all required input data has been entered.

Connection Type:

Custom Application Server

System Connection Parameters

Description:

BI7 z10 WBI

Application Server:

sapprt.walton.uark.edu

Instance Number:

01

System ID:

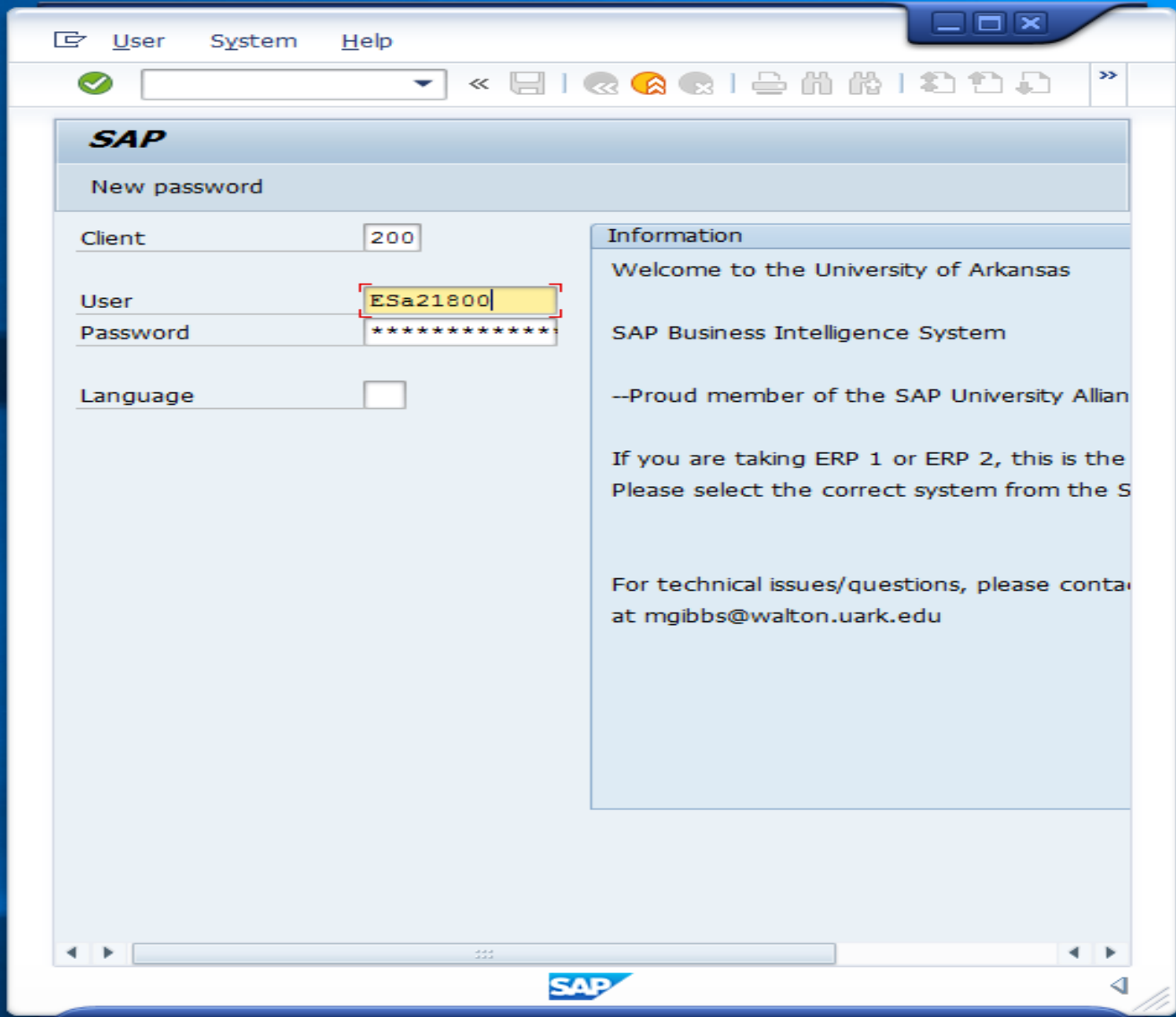
WBI

SAProuter String:

OK

Cancel

Help



SAP Easy Access - User menu for Bo Bo Hu

SAP Easy Access - User menu for Bo Bo Hu

- Other menu
- Create role
- Favorites
- User menu for Bo Bo Hu
 - Brandcode204
 - ProductFF
 - New Query
 - New Query
 - New C
 - freez
 - BW Ac
 - Tools
 - Model
 - Admin
 - Busine
 - Business Planning and S
 - Enhanced Analytics

Log Off

Unsaved data will be lost.
Do you want to log off?

Yes No

UNIVERSITY OF ARKANSAS

SAP

Book1 - Excel

File Home Insert Page Lay Formulas Data Review View Add-ins Analysis EPM Data Man Tell me... Bo Bo Hu Share

Insert Data Refresh Reload Undo Redo Messages Data Source Actions Data Analysis Display Format Insert Tools Design Panel

Logon to SAP BusinessObjects BI Platform

SAP BusinessObjects

User

Password

Web Service URL

OK Skip Cancel Options >>

Sheet1

Ready

Book1 - Excel

File Home Insert Page Layout Formulas Data Review View Add-ins Analysis EPM Data Man Tell me... Bo Bo Hu Share

Select Data Source

Show Connections Local System

Description	Technical Name
BI7 z10 WBI	WBI
ECC6 Configuration and Customization	ECC
ERPSim (CSU)	DIJ
ERPSim Competition Server	GM8
Global Bike (CSU)	TIR
Hydra NW 7.3	BI7
SAP HANA ERPSim	BER
Solution Manager 7.1	SM7

Ready

Book1 - Excel

File Home Insert Page Layout Formulas Data Review View Add-ins Analysis EPM Data Man Tell me... Bo Bo Hu Share

Select Data Source

Show Connections Local System

Description	Technical Name
BI7 z10 WBI	WBI
ECC6 Configuration and Customization	ECC
ERPSim (CSU)	DIJ
ERPSim Competition Server	GM8
Global Bike (CSU)	TIR
Hydra NW 7.3	BI7
SAP HANA ERPSim	BER
Solution Manager 7.1	SM7

Logon to System BI7 z10 WBI

SAP BusinessObjects

Client: 200

User: ESa21800

Password:

OK Cancel Options >>

Ready

