



THE ONE CENTER

A U S T I N

Unity Room Rental Kit



The Unity Room is popular with innovative, socially-conscious, and inspired groups seeking a creative, peaceful, grounding space with lots of natural light, beautiful 30-year old pecan trees, and picture windows... a natural sanctuary in an urban setting in the heart of Austin, Texas.

The One Center Austin is within walking distance to coffee shops, restaurants and many more eateries and hotels are a 5-10 minute drive away in the lower Burnet business district (Lo-Burn). The Center is conveniently located with easy access to both I-35 and Mopac Expressway (Loop 1), and a bus stop at the corner.

Space Amenities:

- ~1,000 square feet (32' x 30')
- 55 Chairs
- 1 - 6' Banquet table
- Unlimited street parking
- Parking lot with 14 spaces (includes 2 handicapped)
- 2 bathrooms (one ADA)
- Front and back entrances
- Kitchenette (refrigerator, sink, toaster oven)
- Hot/cold filtered water cooler
- 2 large-screen TVs, DVD player
- 2 white boards
- WiFi
- 8-speaker sound system

Please fill out a **Unity Room Rental Request Form** and contact us via phone (512) 420-0750 or email info@theonecenteraustin.com with further questions.



USER-FRIENDLY SPACE

The One Center Austin offers free usage of our equipment stated and chairs available for the configurations listed. If additional setup equipment is needed, you may lease from an accepted equipment company.



Unlimited Parking

Take the hassle and stress out of your event planning knowing that at The One Center you receive the benefit of easy and worry-free unlimited parking! Our Center offers a private parking lot for an intimate and convenient indoor/outdoor event.

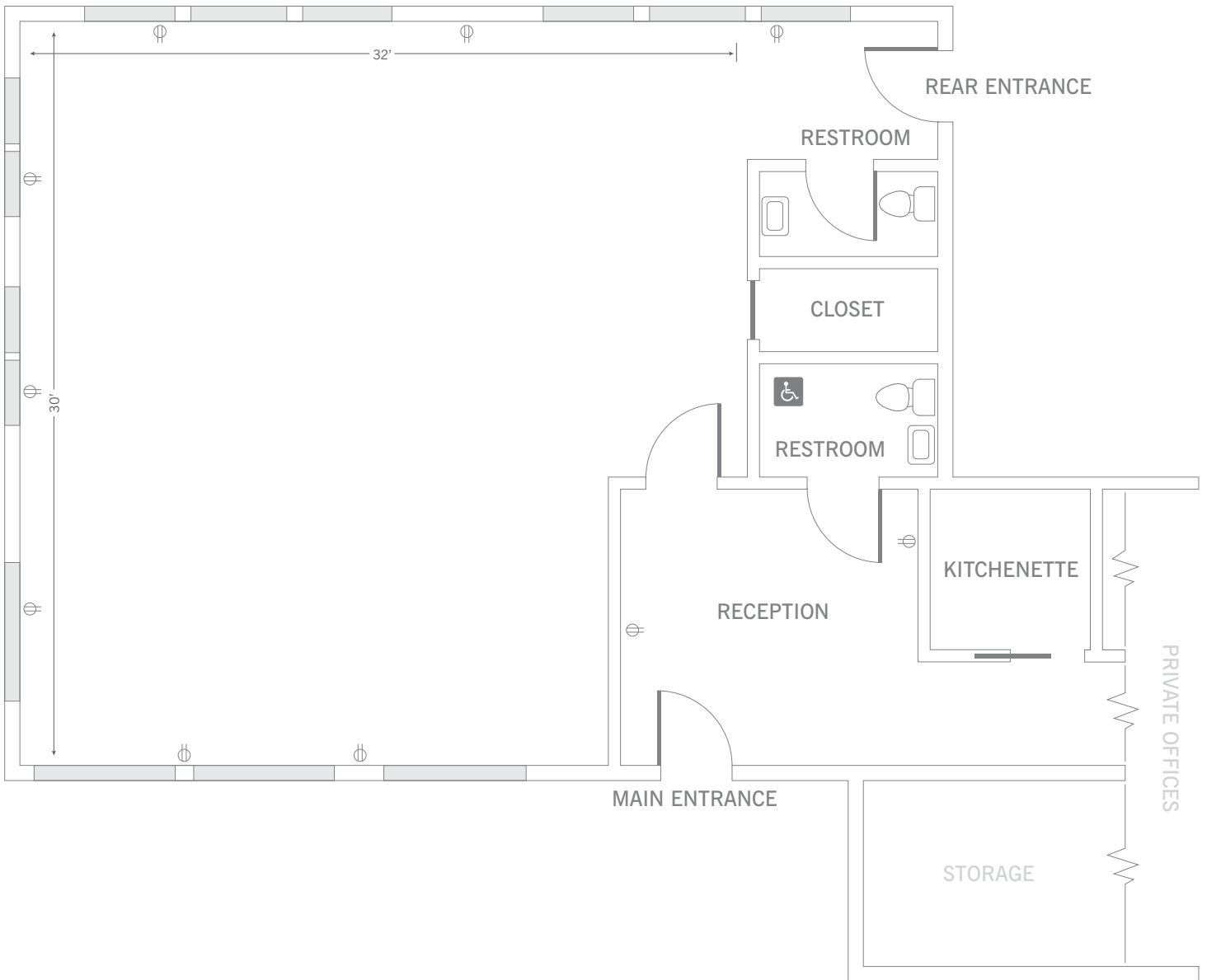


ADA COMPLIANT SPACE

The One Center is a single-story facility designed to offer access to all people.



UNITY ROOM

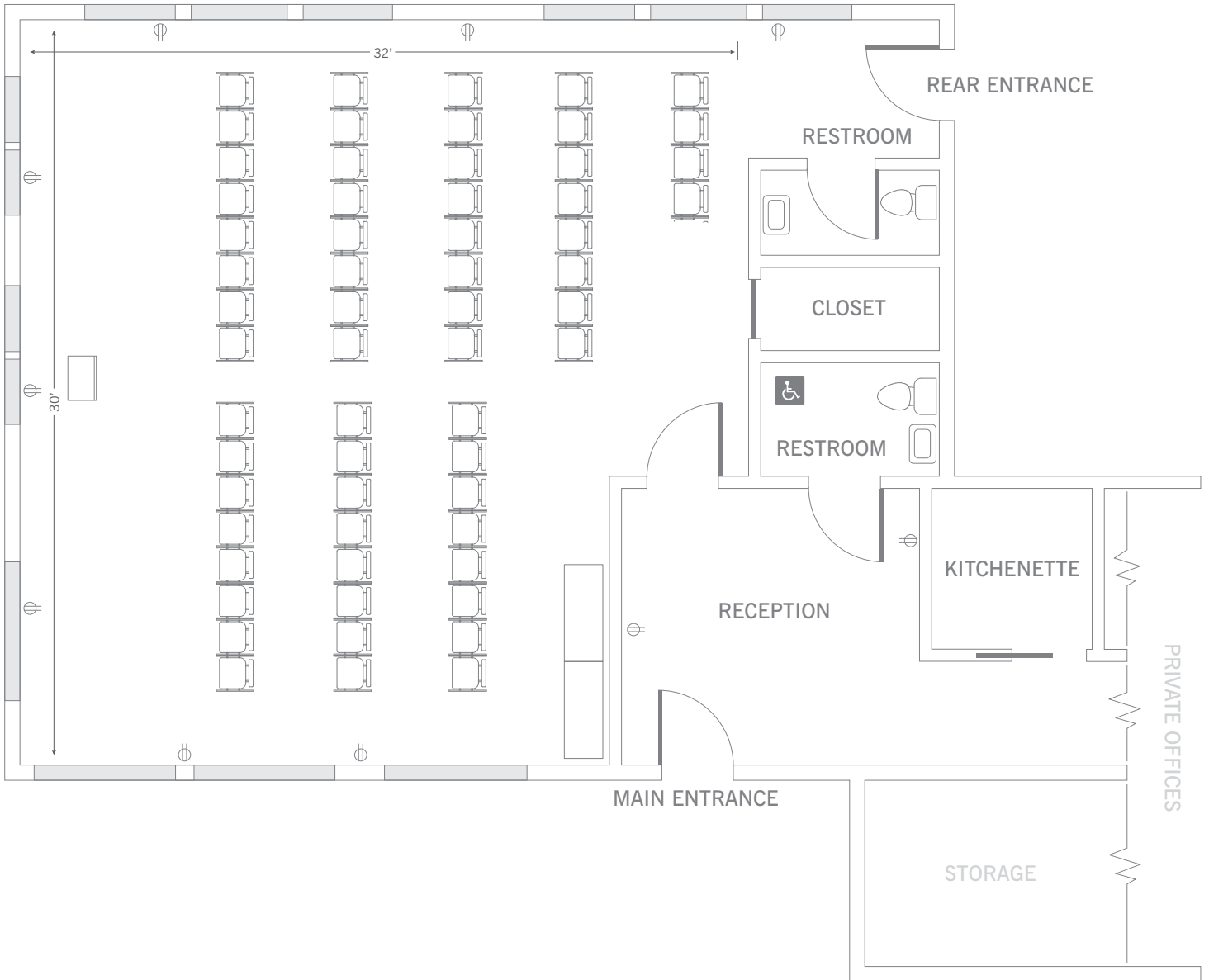


LAYOUT NOTES



UNITY ROOM

THEATRE STYLE



LAYOUT NOTES

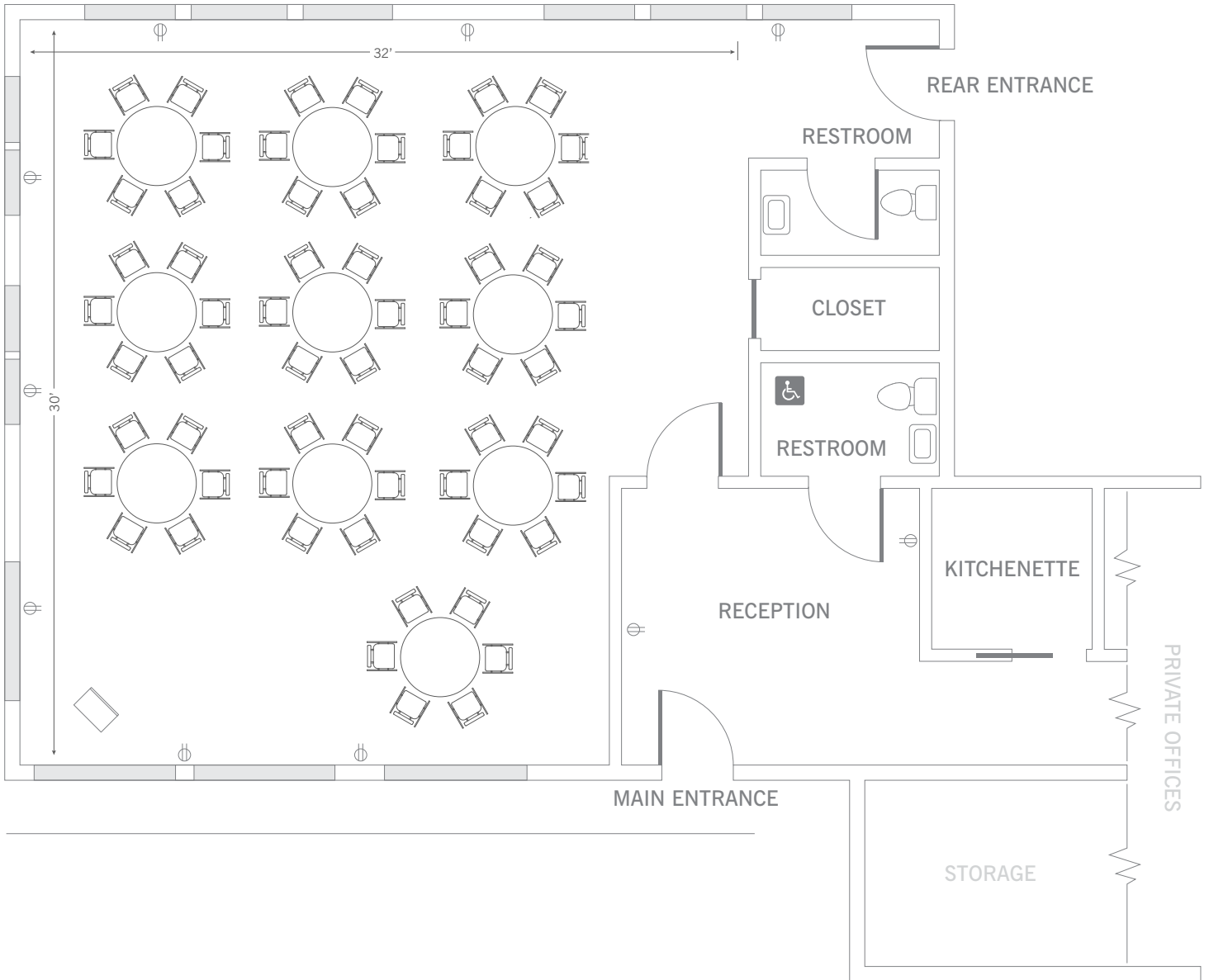
RENTALS NEEDED FOR THIS CONFIGURATION FOR 60 PEOPLE

- 5 additional chairs needed
- 1 - 6' tables
- Podium



UNITY ROOM

BANQUET ROUNDS



LAYOUT NOTES

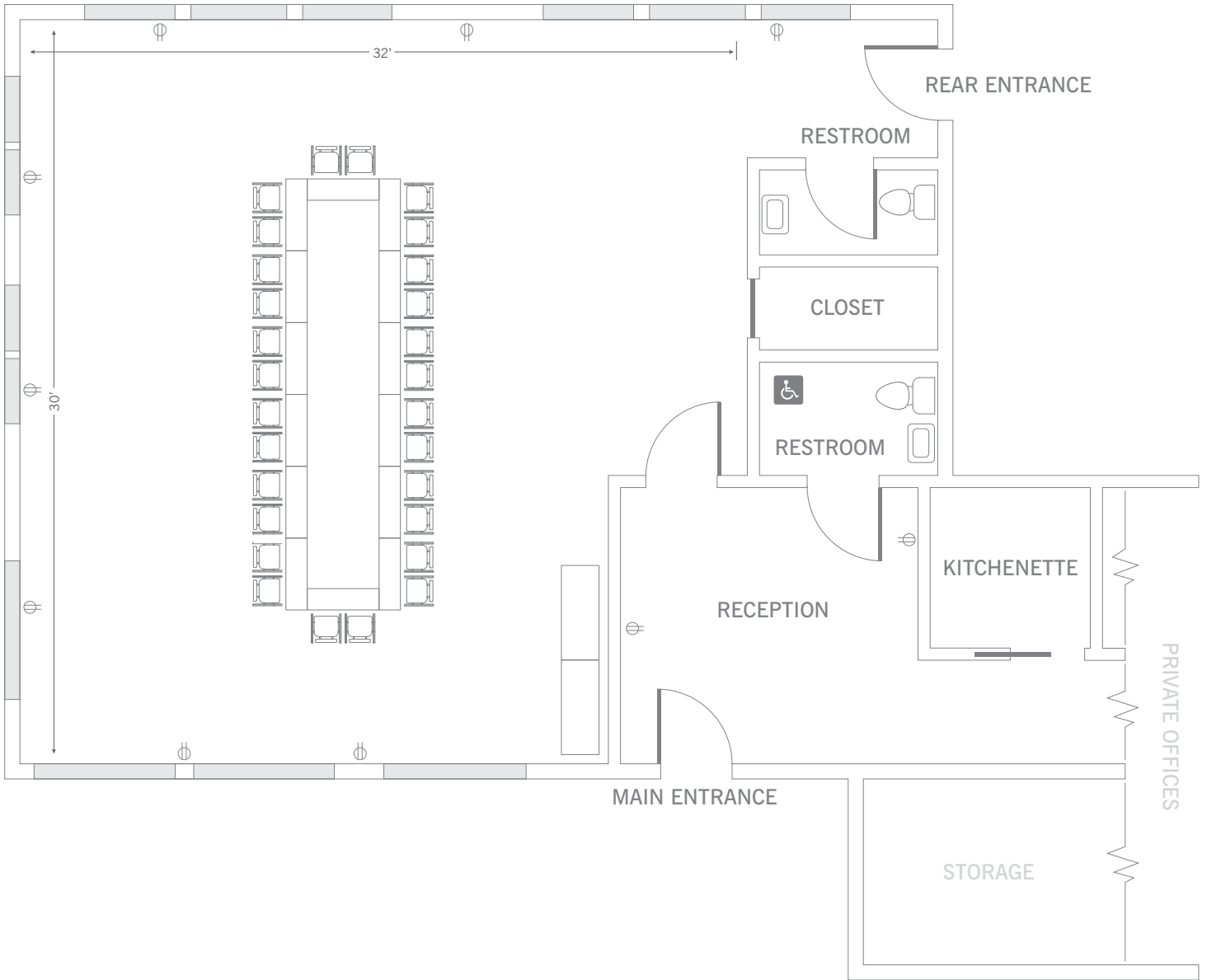
RENTALS NEEDED FOR THIS CONFIGURATION FOR 60 PEOPLE

- 5 additional chairs needed
- 10 - 60" round tables
- 10 - 120" round tablecloths
- Podium



UNITY ROOM

BOARDROOM STYLE



LAYOUT NOTES

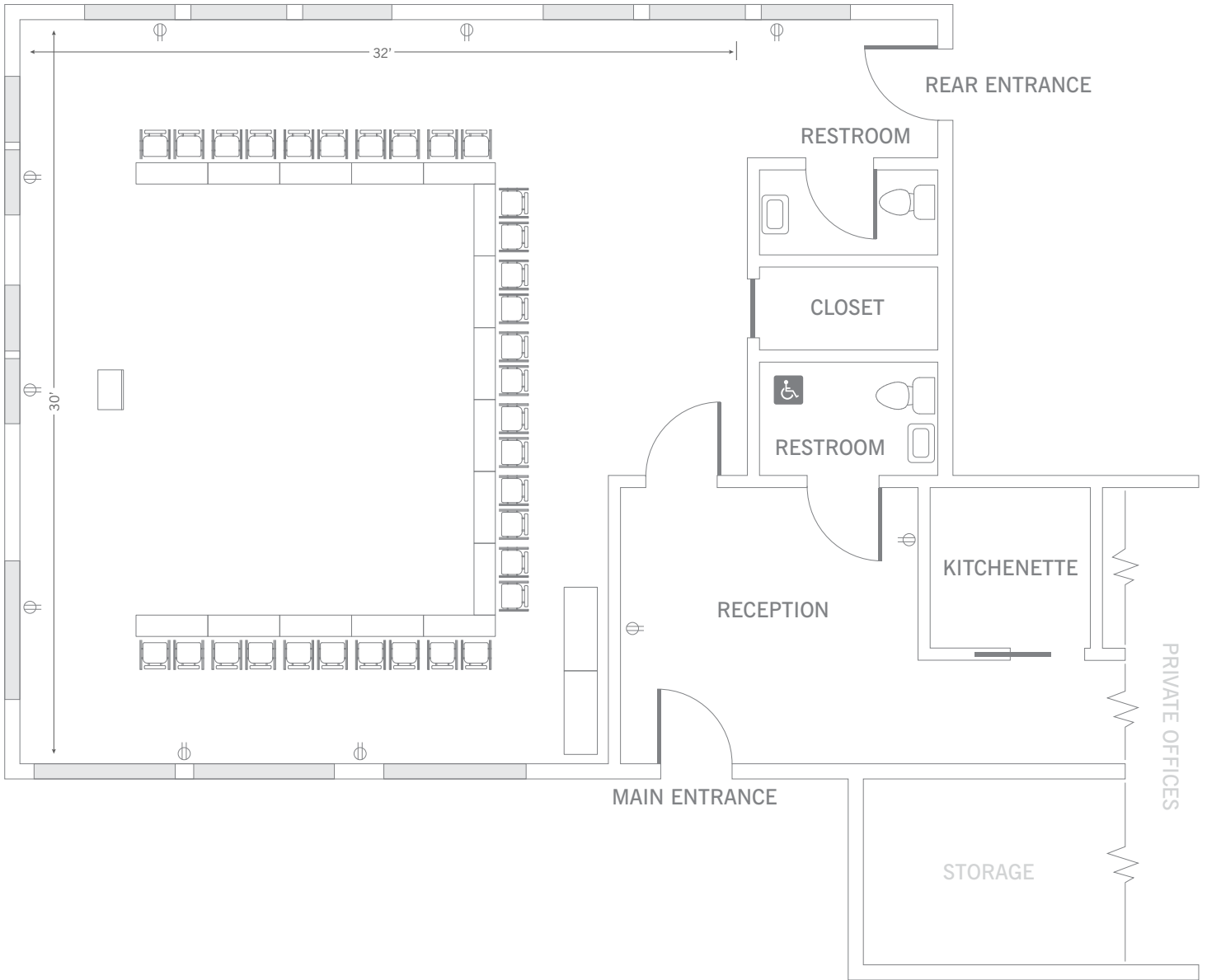
RENTALS NEEDED FOR THIS CONFIGURATION FOR 28 PEOPLE

- 14 - 6' x 18" Classroom tables
- 14 - 90" x 80" tablecloths



UNITY ROOM

U - CONFERENCE STYLE



LAYOUT NOTES

RENTALS NEEDED FOR THIS CONFIGURATION FOR 32 PEOPLE

- 16 - 6' x 18" classroom tables
- 16 - 90" x 80" tablecloths
- 1 - 6' Banquet tables
- 2 - 90" x 132" tablecloths