



2014 LIEBHERR LTM-1130-5.1 / 066-511

Prepared for:  
**SHERMAN CRANE**




140 West St.  
Wilmington, MA 01887

on

6/2/2023

# Overview

## Breakdown by Form

| Form Type                                |  High |  Med |  Low | # Forms  |
|------------------------------------------|----------------------------------------------------------------------------------------|-----------------------------------------------------------------------------------------|-----------------------------------------------------------------------------------------|----------|
| Inspection                               | 0                                                                                      | 0                                                                                       | 0                                                                                       | 1        |
| Local Acknowledgment Of Unit Examination | 0                                                                                      | 0                                                                                       | 0                                                                                       | 1        |
| <b>Overall:</b>                          | <b>0</b>                                                                               | <b>0</b>                                                                                | <b>0</b>                                                                                | <b>2</b> |

## Breakdown by Location

| Location        |  High |  Med |  Low | # Forms  |
|-----------------|----------------------------------------------------------------------------------------|-----------------------------------------------------------------------------------------|-----------------------------------------------------------------------------------------|----------|
| Wilmington, MA  | 0                                                                                      | 0                                                                                       | 0                                                                                       | 2        |
| <b>Overall:</b> | <b>0</b>                                                                               | <b>0</b>                                                                                | <b>0</b>                                                                                | <b>2</b> |

## Breakdown by Asset

| Asset Type             |  High |  Med |  Low | # Assets |
|------------------------|----------------------------------------------------------------------------------------|-----------------------------------------------------------------------------------------|-----------------------------------------------------------------------------------------|----------|
| Telescoping Boom Crane | 0                                                                                      | 0                                                                                       | 0                                                                                       | 1        |
| <b>Overall:</b>        | <b>0</b>                                                                               | <b>0</b>                                                                                | <b>0</b>                                                                                | <b>1</b> |

Marquis Crane Service disclaims all warranties, both express and implied, relating to the information, reports, opinions and analysis disclosed to the Customer by Marquis Crane Service. Marquis Crane Service shall not be liable for any errors or omissions, or any losses, injury or damages arising from the use of such information, reports, opinions and analysis by the Customer.



**Inspection**  
**SHERMAN CRANE**  
140 West St.  
Wilmington, MA 01887

FolderID: AI6349  
FormID: 16948848



**Telescoping Boom Crane**

**Location:** Wilmington, MA  
**Serial #:** 066-511  
**TagID:** 181  
**Status:** In Service  
**Description:**2014 LIEBHERR LTM-1130-5.1 / 066-511

**Manufacturer:** Liebherr  
**Model:** LTM-1130-5.1  
**Capacity:** per OEM capacity chart  
**Length/Lift:** 42 - 197 ft  
**Hook Type:** Load Block & Hook

**Hours and Miles**

- 1. Hours **3,284. upper engine**
- 2. Miles **36962.**

**Historical Records**

- 3. Monthly Inspection **(SAT) Satisfactory**
- 4. Record of Maintenance **(SAT) Satisfactory**
- 5. Documentation of Annual / Comprehensive Inspection **(SAT) Satisfactory**
- 6. Equipment Modification(s) or additions **(NA) Not Applicable**
- 7. Record of Load Test **(SAT) Satisfactory**

**General**

- 8. External Lights **(SAT) Satisfactory**  
  - *LMI lights*
- 9. Housekeeping **(SAT) Satisfactory**
- 10. Safety and Warning Labels **(SAT) Satisfactory**
- 11. Hand Signal Chart **(SAT) Satisfactory**

**Driver's Cab and Station**

- 12. Service Brake **(SAT) Satisfactory**
- 13. Emergency Brake **(SAT) Satisfactory**
- 14. Parking Brake **(SAT) Satisfactory**
- 15. External Lights (Headlights, Taillights, Brake Lights) **(SAT) Satisfactory**
- 16. Audible Warning Device **(SAT) Satisfactory**
- 17. Audible Reverse Signal Alarm **(SAT) Satisfactory**
- 18. Windows / Mirrors **(SAT) Satisfactory**

Marquis Crane Service disclaims all warranties, both express and implied, relating to the information, reports, opinions and analysis disclosed to the Customer by Marquis Crane Service. Marquis Crane Service shall not be liable for any errors or omissions, or any losses, injury or damages arising from the use of such information, reports, opinions and analysis by the Customer.

|                                        |                    |
|----------------------------------------|--------------------|
| ● 19. Windshield Wipers                | (SAT) Satisfactory |
| ● 20. Windshield Defroster             | (SAT) Satisfactory |
| ● 21. Seatbelts                        | (SAT) Satisfactory |
| ● 22. Tires                            | (SAT) Satisfactory |
| ● 23. Seat                             | (SAT) Satisfactory |
| ● 24. Steering                         | (SAT) Satisfactory |
| ● 25. Housekeeping                     | (SAT) Satisfactory |
| ● 26. Fire Extinguisher                | (SAT) Satisfactory |
| <b>Lower Carrier Power Plant</b>       |                    |
| ● 27. Engine Performance               | (SAT) Satisfactory |
| ● 28. Exhaust System                   | (SAT) Satisfactory |
| ● 29. Belts                            | (SAT) Satisfactory |
| ● 30. Rotating and Reciprocating Parts | (SAT) Satisfactory |
| <b>Carrier</b>                         |                    |
| ● 31. Transmission                     | (SAT) Satisfactory |
| ● 32. Drive Line                       | (SAT) Satisfactory |
| ● 33. Tires                            | (SAT) Satisfactory |
| ● 34. Tire Air Pressure                | (SAT) Satisfactory |
| ● 35. Main Frame Members               | (SAT) Satisfactory |
| ● 36. Hydraulic Hoses, Fittings, Tubes | (SAT) Satisfactory |
| ● 37. Hydraulic Fluid Level            | (SAT) Satisfactory |
| ● 38. Hoses / Tubing / Fittings .      | (SAT) Satisfactory |
| ● 39. Slip Resistant Walking surface   | (SAT) Satisfactory |
| ● 40. Axle Lockout                     | (SAT) Satisfactory |
| ● 41. Audible Reverse Signal Alarm     | (SAT) Satisfactory |
| <b>Outriggers</b>                      |                    |
| ● 42. Boxes & Beams                    | (SAT) Satisfactory |
| ● 43. Hydraulic Cylinders              | (SAT) Satisfactory |
| ● 44. Pad / Float                      | (SAT) Satisfactory |
| ● 45. Hoses / Tubing / Fittings        | (SAT) Satisfactory |
| ● 46. Holding Valves                   | (SAT) Satisfactory |
| ● 47. Caution / Warning Signs          | (SAT) Satisfactory |
| <b>Operator's Station</b>              |                    |
| ● 48. Windows                          | (SAT) Satisfactory |
| ● 49. Windshield Wipers                | (SAT) Satisfactory |
| ● 50. Cab Door Restraint               | (SAT) Satisfactory |
| ● 51. Cab Access                       | (SAT) Satisfactory |
| ● 52. Steps / Ladders / Handrails      | (SAT) Satisfactory |
| ● 53. Anti-Skid Stepping Surfaces      | (SAT) Satisfactory |
| ● 54. Load Chart                       | (SAT) Satisfactory |
| ● 55. Fire Extinguisher                | (SAT) Satisfactory |
| ● 56. Operator's Manual                | (SAT) Satisfactory |
| ● 57. Seat                             | (SAT) Satisfactory |
| ● 58. Seatbelts                        | (SAT) Satisfactory |
| ● 59. Electrocution Warning Sign(s)    | (SAT) Satisfactory |
| ● 60. Level                            | (SAT) Satisfactory |
| ● 61. Horn                             | (SAT) Satisfactory |

Marquis Crane Service disclaims all warranties, both express and implied, relating to the information, reports, opinions and analysis disclosed to the Customer by Marquis Crane Service. Marquis Crane Service shall not be liable for any errors or omissions, or any losses, injury or damages arising from the use of such information, reports, opinions and analysis by the Customer.

|                                                           |                     |
|-----------------------------------------------------------|---------------------|
| ● 62. Load Indicator                                      | (SAT) Satisfactory  |
| ● 63. Controls Identified                                 | (SAT) Satisfactory  |
| ● 64. Control Mechanisms                                  | (SAT) Satisfactory  |
| ● 65. Power Plant Controls                                | (SAT) Satisfactory  |
| ● 66. Brake and Clutch                                    | (NA) Not Applicable |
| ● 67. Travel Brakes                                       | (NA) Not Applicable |
| ● 68. Travel Controls                                     | (NA) Not Applicable |
| ● 69. Travel Mechanism                                    | (NA) Not Applicable |
| ● 70. Travel Locks                                        | (NA) Not Applicable |
| <b>Load Chart</b>                                         |                     |
| ● 71. Ground Level, Remotely Controlled                   | (NA) Not Applicable |
| ● 72. Per Configuration                                   | (SAT) Satisfactory  |
| ● 73. Visible from Fixed Operator's Station               | (SAT) Satisfactory  |
| ● 74. Durable / Legible/ Secured                          | (SAT) Satisfactory  |
| <b>Safety Devices / Operational Aids</b>                  |                     |
| ● 75. Boom Angle Indicator                                | (SAT) Satisfactory  |
| ● 76. Boom Length Indicator                               | (SAT) Satisfactory  |
| ● 77. Main Drum Rotation Indicator                        | (SAT) Satisfactory  |
| ● 78. Auxiliary Drum Rotation Indicator                   | (NA) Not Applicable |
| ● 79. Load Moment Indicator                               | (SAT) Satisfactory  |
| ● 80. Load Weight Indicator                               | (SAT) Satisfactory  |
| ● 81. Radius Indicator                                    | (SAT) Satisfactory  |
| ● 82. Level Indicator                                     | (SAT) Satisfactory  |
| ● 83. Barge List & Trim Indicator                         | (NA) Not Applicable |
| ● 84. If Barge Mounted, Is The Crane Secured To The Barge | (NA) Not Applicable |
| ● 85. Two-Block System                                    | (SAT) Satisfactory  |
| ● 86. Overload Prevention Device                          | (SAT) Satisfactory  |
| <b>Upper Power Plant</b>                                  |                     |
| ● 87. Performance                                         | (SAT) Satisfactory  |
| ● 88. Exhaust System/Guards & Insulators                  | (SAT) Satisfactory  |
| ● 89. Hoses                                               | (SAT) Satisfactory  |
| ● 90. Reciprocating and rotating parts                    | (SAT) Satisfactory  |
| <b>Rotating Upper Structure</b>                           |                     |
| ● 91. Turntable / Bearing                                 | (SAT) Satisfactory  |
| ● 92. Turntable / Rollers                                 | (NA) Not Applicable |
| ● 93. Counterweight Frame                                 | (SAT) Satisfactory  |
| ● 94. Ring and Pinion Gear                                | (SAT) Satisfactory  |
| ● 95. Hydraulic and Pneumatic Pumps                       | (SAT) Satisfactory  |
| ● 96. Hydraulic Tubes, Fitting, and Hoses                 | (SAT) Satisfactory  |
| ● 97. Hydraulic Pressure                                  | (SAT) Satisfactory  |
| ● 98. Electrical Wiring                                   | (SAT) Satisfactory  |
| ● 99. Main Hoist - Brakes and Clutch System               | (SAT) Satisfactory  |
| ● 100. Main Hoist - Wire Rope Reeving                     | (SAT) Satisfactory  |
| ● 101. Main Hoist - Meets 2 rope wrap minimum             | (SAT) Satisfactory  |
| ● 102. Auxiliary Hoist - Brakes and Clutch System         | (NA) Not Applicable |
| ● 103. Auxiliary Hoist - Wire Rope Reeving                | (NA) Not Applicable |
| ● 104. Auxiliary Hoist - Meets 2 rope wrap minimum        | (NA) Not Applicable |

Marquis Crane Service disclaims all warranties, both express and implied, relating to the information, reports, opinions and analysis disclosed to the Customer by Marquis Crane Service. Marquis Crane Service shall not be liable for any errors or omissions, or any losses, injury or damages arising from the use of such information, reports, opinions and analysis by the Customer.

|                                                    |                             |
|----------------------------------------------------|-----------------------------|
| ● 105. Swing System / Assembly                     | (SAT) Satisfactory          |
| ● 106. Counterweight Mounting                      | (SAT) Satisfactory          |
| ● 107. Counterweight Posted Warnings               | (SAT) Satisfactory          |
| ● 108. Electrocution Posted Warnings               | (SAT) Satisfactory          |
| <b>Main Boom</b>                                   |                             |
| ● 114. Lift Cylinder(s)                            | (SAT) Satisfactory          |
| ● 115. Telescoping Boom Cylinder(s)                | (SAT) Satisfactory          |
| ● 116. Hydraulic Hoses, Tubes, and Fittings        | (SAT) Satisfactory          |
| ● 117. Holding Device                              | (SAT) Satisfactory          |
| ● 118. Boom Sections Alignment                     | (SAT) Satisfactory          |
| ● 119. Wear Pads                                   | (SAT) Satisfactory          |
| ● 120. Sheaves                                     | (SAT) Satisfactory          |
| ● 121. Hoist Line Dead End                         | (SAT) Satisfactory          |
| ● 122. Boom Hinge Pin                              | (SAT) Satisfactory          |
| ● 123. Boom Head Section                           | (SAT) Satisfactory          |
| ● 124. Auxiliary Boom Head                         | (SAT) Satisfactory          |
| ● 125. Structure                                   | (SAT) Satisfactory          |
| <b>Jib</b>                                         |                             |
| ● 126. Structure                                   | (SAT) Satisfactory          |
| ● 127. Sheaves                                     | (SAT) Satisfactory          |
| ● 128. Wire Rope Retainers                         | (SAT) Satisfactory          |
| ● 129. End Connections and Pins                    | (SAT) Satisfactory          |
| ● 130. Wire Rope Retainers.                        | (SAT) Satisfactory          |
| <b>Main Drum Wire Rope</b>                         |                             |
| ● 134. Rope Damage                                 | (SAT) Satisfactory          |
| ● 135. Diameter and wear                           |                             |
| Size                                               | Actual diameter measurement |
| <b>21 mm</b>                                       | <b>21.20 mm</b>             |
| ● 136. Lubrication                                 | (SAT) Satisfactory          |
| ● 137. End Connectors                              | (SAT) Satisfactory          |
| <b>Load Block &amp; Hook</b>                       |                             |
| ● 159. Capacity Marking<br>■ <i>LIEBHERR 30 mt</i> | (SAT) Satisfactory          |
| ● 160. Weight Marking<br>■ <i>450 kg</i>           | (SAT) Satisfactory          |
| ● 161. Sheave(s)                                   | (SAT) Satisfactory          |
| ● 162. Safety Latch(es)                            | (SAT) Satisfactory          |
| ● 163. 0° Hook Bend or Twist                       | (SAT) Satisfactory          |
| ● 164. 5% Hook Opening or 1/4" Max                 | (SAT) Satisfactory          |
| ● 165. 10% Hook Wear Max                           | (SAT) Satisfactory          |
| ● 166. Bearing                                     | (SAT) Satisfactory          |
| ● 167. Wedge Socket / End Fitting                  | (SAT) Satisfactory          |
| ● 168. Reeving                                     | (SAT) Satisfactory          |
| <b>Overhaul Ball &amp; Hook</b>                    |                             |
| ● 169. Capacity Marking<br>■ <i>LIEBHERR 10 mt</i> | (SAT) Satisfactory          |
| ● 170. Weight Marking                              | (SAT) Satisfactory          |

Marquis Crane Service disclaims all warranties, both express and implied, relating to the information, reports, opinions and analysis disclosed to the Customer by Marquis Crane Service. Marquis Crane Service shall not be liable for any errors or omissions, or any losses, injury or damages arising from the use of such information, reports, opinions and analysis by the Customer.

250 kg

|                                    |                    |
|------------------------------------|--------------------|
| ● 171. Safety Latches              | (SAT) Satisfactory |
| ● 172. 0° Hook Bend or Twist       | (SAT) Satisfactory |
| ● 173. 5% Hook Opening or 1/4" Max | (SAT) Satisfactory |
| ● 174. 10% Hook Wear Max           | (SAT) Satisfactory |
| ● 175. Swivel / Bearing            | (SAT) Satisfactory |
| ● 176. Wedge Socket / End Fitting  | (SAT) Satisfactory |

**No-Load Operational Test**

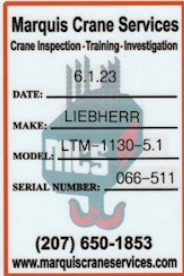
|                                 |                    |
|---------------------------------|--------------------|
| ● 177. No-Load Operational Test | (SAT) Satisfactory |
|---------------------------------|--------------------|

**Verification and Completion**

|                                     |               |
|-------------------------------------|---------------|
| ● 178. Inspector Name and Signature | Steve Marquis |
|-------------------------------------|---------------|



|                                    |               |
|------------------------------------|---------------|
| ● 179. Date of Inspection          | 06/01/2023    |
| ● 180. Customer Name and Signature | SHERMAN CRANE |
| ● 181. Certificate Issued          | (Y) Yes       |



Marquis Crane Service disclaims all warranties, both express and implied, relating to the information, reports, opinions and analysis disclosed to the Customer by Marquis Crane Service. Marquis Crane Service shall not be liable for any errors or omissions, or any losses, injury or damages arising from the use of such information, reports, opinions and analysis by the Customer.



## Local Acknowledgment Of Unit Examination

**SHERMAN CRANE**  
140 West St.  
Wilmington, MA 01887

FolderID: AI6349  
FormID: 16948849



### Telescoping Boom Crane

**Location:** Wilmington, MA  
**Serial #:** 066-511  
**TagID:** 181  
**Status:** In Service  
**Description:**2014 LIEBHERR LTM-1130-5.1 / 066-511

**Manufacturer:** Liebherr  
**Model:** LTM-1130-5.1  
**Capacity:** per OEM capacity chart  
**Length/Lift:** 42 - 197 ft  
**Hook Type:** Load Block & Hook

### Local Acknowledgment Of Unit Examination

|                                  |                                        |
|----------------------------------|----------------------------------------|
| ● 1. OWNERS IDENTIFICATION       | 181                                    |
| ● 2. OWNER/EMPLOYER              | SHERMAN CRANE                          |
| ● 3. OWNERS ADDRESS              | 140 West St. - Wilmington, MA<br>01887 |
| ● 4. TYPE OF DEVICE              | CRANE                                  |
| ● 5. CRANE LOCATION/ADDRESS      | 140 West St. - Wilmington, MA<br>01887 |
| ● 6. DOES UNIT CHANGE WORKSITES? | (Y) YES                                |
| ● 7. HOUR METER                  | 3,284.                                 |
| ■ upper engine                   |                                        |
| ● 8. MANUFACTURER                | LIEBHERR                               |
| ● 9. MODEL                       | LTM-1130-5.1                           |
| ● 10. SERIAL NUMBER              | 066-511                                |
| ● 11. DESCRIPTION OF DEVICE      | hydraulic boom - all terrain           |
| ● 12. MAXIMUM CAPACITY           | see OEM load capacity chart            |
| ● 13. SERVICE STATUS             | HOOK WORK                              |
| ● 14. BOOM LENGTH & TYPE         | 42 - 197 ft / pin & latch              |
| ● 15. LUFFING JIB LENGTH & TYPE  |                                        |
| ● 16. FIXED JIB LENGTH & TYPE    | 35 or 62 ft / SAW bi-fold offset       |
| ● 17. TOWER HEIGHT & TYPE        |                                        |

Marquis Crane Service disclaims all warranties, both express and implied, relating to the information, reports, opinions and analysis disclosed to the Customer by Marquis Crane Service. Marquis Crane Service shall not be liable for any errors or omissions, or any losses, injury or damages arising from the use of such information, reports, opinions and analysis by the Customer.



18. PROOF LOAD TEST APPLIED 1.1

| BOOM LENGTH | BOOM ANGLE | RADIUS  |
|-------------|------------|---------|
| 84 ft       | 30.5       | 67.6 ft |



19. PROOF LOAD TEST APPLIED 1.2

| RATED LOAD | PROOF LOAD | % OF RATED LOAD |
|------------|------------|-----------------|
| 15,000 lbs | 14,900 lbs | 100             |

20. PROOF LOAD TEST APPLIED 1.3

| HOIST USED | BOOM DIRECTION | LOAD CHART NUMBER |
|------------|----------------|-------------------|
| main       | over rear      | LMI code          |

21. DESCRIPTION OF PROOF LOAD **crane counter-weights**

22. BASIS FOR ASSIGNED LOAD RATINGS **OEM designed rating**

23. REMARKS AND/OR LIMITATIONS IMPOSED

24. I certify that on this date, the above device was examined & tested by the undersigned or authorized representative who in their opinion, said the unit complied with the standards or requirements of OSHA: 1926.1400 and ASME B30.5 **06/01/2023**

25. SIGNATURE OF AUTHORIZED PERSON **Steve Marquis**