

A photograph of a live music performance at Malcahy's. The stage is lit with bright blue and white spotlights. A band is performing, with a drummer visible in the background. The audience is in the foreground, mostly in silhouette, looking towards the stage. The overall atmosphere is energetic and vibrant.

TECHNICAL INFORMATION



**3232 Railroad Ave
Wantagh, NY 11793
(516) 783-7500 | muls.com**

Tim Murray
Talent Buyer
Director of Promotion
tmurray@mulcahys.com

Rick Cappiello
Stage manager
Sound Engineer
rcappiello@mulcahys.com

Allan Dorman
General Manager
Head of Security
adorman@mulcahys.com

Mike Gaudiello
Sound Engineer
(929) 301-2973
mike.gaudiello@yahoo.com

Matthew Story
Light & Video Engineer
Sound Engineer
mstory@mulcahys.com

Ruby Staplehurst
Book Office Manager
Promotional Assistant
ruby@mulcahys.com



GENERAL INFORMATION

CAPACITY	General Admission: 1,650
TICKETING	Box Office Main Address - Ramp on the corner of Railroad Ave and Wantagh Ave - M-F 9:00am-6:00pm Mulcahy's Pub and Concert Hall Website www.muls.com Ticketweb www.ticketweb.com/venue/mulcahy-s-pub-and-concert-hall-wantagh-ny/143764
MAIN ENTRANCE	3232 Railroad Ave, Wantagh NY 11793 We are located directly across from the Wantagh Station of the LIRR. Our front doors serve as our entrance/exit to the public and consist of one set of double doors
WIFI/INTERNET	WiFi is available throughout the entire facility Network name and password available upon request.
SHIPMENTS	Advance approval must be given for any and all shipments arriving prior to the date of your event. All packages are subject to venue inspection upon arrival. Please include Mulcahy's Pub and Concert Hall and the tour/event name on all shipments.
STAGE DIMENSIONS	Width: 36' Depth: 14'* Height: 5' *Stage extensions available upon request

Mulcahy's Pub and Concert Hall's PA is a d&b audiotechnik installation specific A series. All amplification is d&b D series amplifiers designed for the installation. Being that the d&b (racks, delays, etc.) is an installation specific system, we cannot remove anything to accommodate visiting artists.

MAIN PA

6 -	d&b	10AL Installation Loudspeaker	2 way Line Array :: (3) per side
6 -	d&b	10AL-D Installation Loudspeaker	2 way Line Array with wide dispersion :: (3) per side
4 -	d&b	27A-SUB Cardioid Subwoofer	(2) per side located under the stage

FOH Control

FOH Console	Midas M32 :: (32) Channel Digital Console
-------------	---

MONITORS

6 -	RCF 12'' Powered Monitors
1 -	Custom Built EAW Drum Sub

MONITOR CONTROL

House monitor control is located stage right approximately above the stage with sight lines for all artists on stage. Touring audio is able to set up stage left on the floor in a stanchioned off area for all monitor mixing.

Monitor Console	Yamaha M7 :: (48) Channel
-----------------	---------------------------

MIC PACKAGE

4 -	Shure	QLXD2 SM58	Wireless Dynamic Cardioid
7 -	Shure	SM58	Dynamic Cardioid
4 -	Shure	SM57	Dynamic Cardioid
3 -	Shure	Beta 56	Supercardioid
5 -	Sennheiser	E904	Dynamic Cardioid
3 -	Sennheiser	E604	Dynamic Cardioid
2 -	Sennheiser	E906	Supercardioid
1 -	Shure	BETA 87C	Condenser
1 -	Shure	BETA 52A	Supercardioid
1 -	Shure	BETA 52	Supercardioid
3 -	Shure	SM81	Condenser
2 -	Samson	C02	Condenser
1 -	AKG	D112	Supercardioid



House Console	Elation Onyx on PC Controlled by Elation Obsidian NX Wing (Rebranded Martin MPC)
8 -	LED Color Kinetic 16s
4 -	Chauvet 375z
6 -	Generic Par 64s
8 -	Elation Dartz 360
6 -	Elation SIXPAR100
4 -	Chauvet DJ Intimidator Spot 260
1 -	Martin 3000 DMX Strobe

HOUSE POWER

3 Phase Power is located under the stage and is accessible to any visiting artists.

SPOTLIGHTS

ONE (1) Chauvet LED Followspot 120ST

Spotlight is located in the Perch with lighting and sound above the dance floor approximately 60ft from the stage.

ATMOSPHERE

ONE (1) High Volume Hazer

VIDEO

FIVE (5) Chauvet VIVID Panels controlled by ADJ VX4s Video Processor

1040x416p Resolution

16.45'W x 6.56'

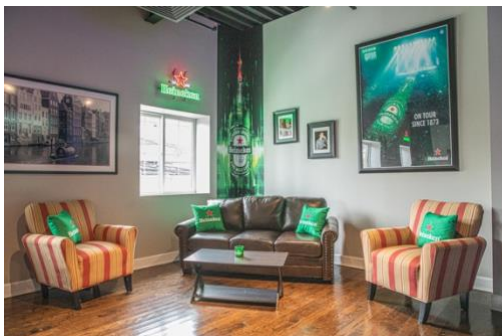
George Francis Room

The greatest green room you will ever see, complete with a bar, two private bathrooms and a shower.



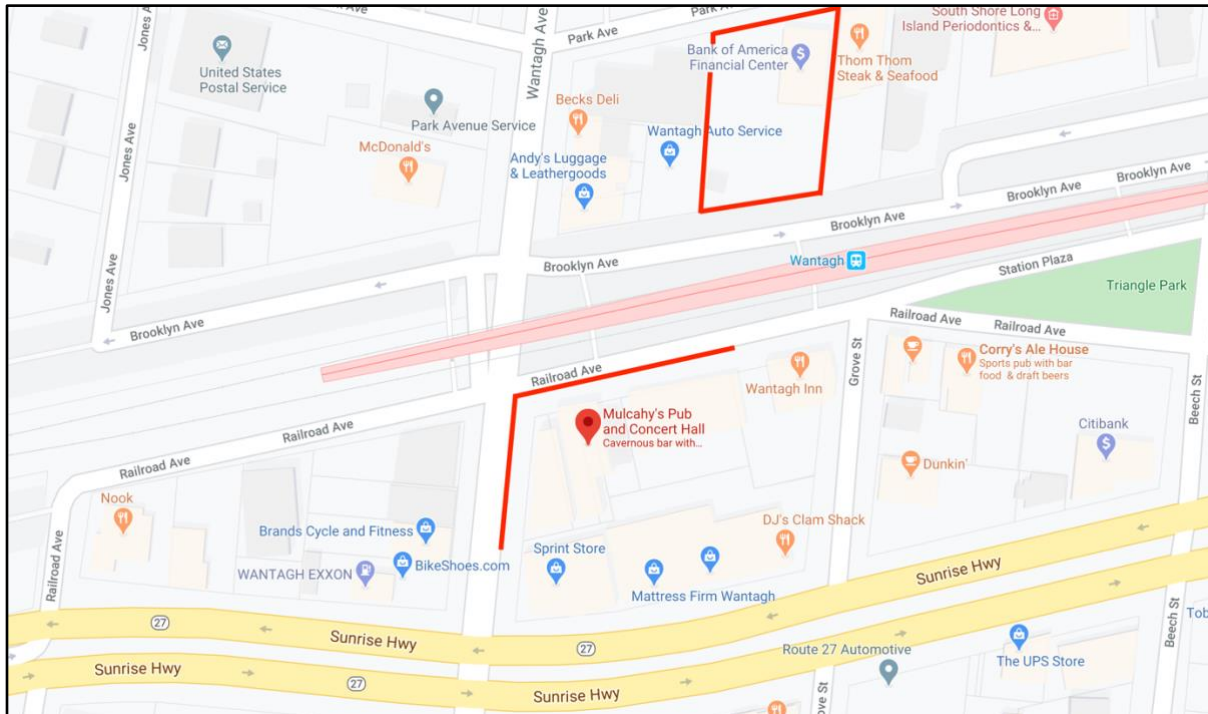
Heineken® Green Room

Heineken® sponsored lounge overlooking concert venue. Provides access to two bathrooms and a shower.



Parking Information

Parking for tour buses, trailers, act vehicles, etc. is available along Railroad Avenue and Wantagh Avenue adjacent to Mulcahy's Pub and Concert Hall. These areas are typically sectioned off with cones on the date of the event to accommodate the act. Additional parking for personal vehicles and guests is available at the Bank of America on Park Avenue (under a minute walk) after the bank closes for the day at 4:00 PM. See below for the aforementioned areas highlighted in red.



Load In Information

Load in is conducted through an exterior ramp at the corner of Railroad Avenue and Wantagh Avenue, followed by an interior ramp that leads to stage left. The typical schedule (can vary by act):

- 12:00 PM: Load In
- 4:00-6:00 PM: Sound Checks
- 7:00 PM: Doors
- 8:00-9:00 PM: Start of Show

