



James M. Anderson, Jr., D.Ph.
Renew Compounding Pharmacy
7105 Crossroads Blvd., Suite 105
Brentwood, TN 37027
Phone 615-891-7776 Fax Number 615-891-7393
www.renewcompounding.com

Commonly Requested Ideas for Pain Management Compounding

Rheumatoid Arthritis/Joint Pain

- Ketoprofen 10% Topical Lipoderm -- Ketoprofen 20% in Lipoderm Transdermal Gel

Soft Tissue Inflammation

- Ibuprofen 20% in Lipoderm Transdermal Gel -- Ibuprofen 20%/Piroxicam 1% Topical Lipoderm
- Diclofenac Sodium 10% in Lipoderm Transdermal Gel

Plantar Fasciitis

- Piroxicam 2% Topical Anhydrous Lipoderm -- Piroxicam 5% in Lipoderm Gel

General Pain

- Ketoprofen 10%/Cyclobenzaprine HCl 2% Topical Lipoderm
- Ibuprofen 20%/Piroxicam 1%/Cyclobenzaprine HCl 1% Topical Lipoderm

Migraines

- Indomethacin 10% in Lipoderm Transdermal Gel

Muscle Cramps for Athletes

- Guaifenesin (2% & 10%) in Lipoderm Base

Anesthetics Before Laser Procedure

- Lidocaine 6%/Tetracaine 6%/Benzocaine 4% Topical Gel

Anesthetics Before Needle Sticks

- Benzocaine 20%/Lidocaine 6%/Tetracaine 4% Topical Lipoderm
- Benzocaine 20%/Lidocaine 6%/Tetracaine 4% Topical Anhydrous Lipoderm
- Benzocaine 20%/Lidocaine 6%/Tetracaine 4%/Phenylephrine HCl 0.01% Topical PLO

Colitis

- Sodium Acetate 60 mM/Sodium Propionate 30 mM/Sodium Butyrate 40 mM Enema (**Short-Chain Fatty Acid Enema**)

Irritable Bowel Syndrome (IBS)

- Retention Enema Vehicle (**Tacrolimus Enema**)

Radiation Proctitis

- Retention Enema Vehicle (**Misoprostol Enema**)

G-Tube Suspension Base

- Methylcellulose 0.5% Stock Suspension (Potassium Sorbate)

Painful Diaper Rash

- Cholestyramine 10% Diaper Rash Ointment

Burning Mouth Syndrome

- Capsaicin 0.25 mg Base A Troche
- Salicylic Acid 0.3% Mouthwash (**Also referred to as BMS Mouthwash**)

Mouth Pain

- Misoprostol 0.0024%/Diphenhydramine HCl 0.1%/Compound Oral Rinse
- Morphine Sulfate 1 mg/mL Oral Gel -- Ketamine 50 mg Sorbitol Lollipop Base
- Misoprostol 0.0024%/Lidocaine HCl 1% Oral Suspension
- Tetracaine HCl 0.5% Sorbitol Lollipop Base
- Diphenhydramine HCl 25 mg/Lidocaine HCl 2%/Hydrocortisone 1% Sorbitol Lollipop Base
- Lidocaine 4% Oral Ployox Bandage

Suspensions

- Morphine Sulfate 50 mg/mL Oral Suspension
- Hydromorphone HCl 20 mg/mL Oral Solution



The ointment mill reduces the particle size of powders, crystals, and creams, resulting in a smooth and elegant finished compound.



Ask the Pharmacist About the Unique Features of the Polyox Bandage.



(OVER)

High Strength Opiate Capsules (SR)

- Hydrocodone Bitartrate 20 mg SR Capsules Size #1 (**Hydrocodone without APAP**)
- Oxycodone HCl 40 mg SR Capsules Size #1

Smooth Muscle Spasm

- Belladonna Extract 15 mg/Morphine Sulfate 7.5 mg Base MBK Suppository (**B&O Suppository has been unavailable**)

Ultrasound (Phonophoresis)

- Hydroxyethyl Cellulose 3% Aqueous Gel -- Hydrocortisone 10% Ultrasound Gel

Iontophoresis

- Acetic Acid 2% (W/V) Iontophoresis Solution (PF)
- Lidocaine HCl 4% Iontophoresis Solution (PF)

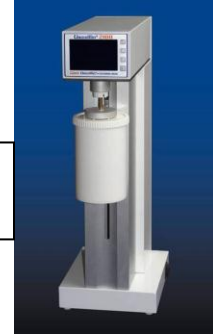
Multiple Sclerosis

- Naltrexone HCl 0.5 mg Capsules Size #1

Neuropathic Pain

- Amitriptyline HCl 2%/Baclofen 5%/Ketamine HCl 5%/Ketoprofen 10% Topical Lipoderm
- Amitriptyline HCl 2%/Baclofen 2% Topical Lipoderm
- Ketoprofen 20%/Ibuprofen 2%/Ketamine 2%/Clonidine 0.2%/Amitriptyline HCl 2%/Guaifenesin 2% Topical Lipoderm
- Baclofen 5%/Ketoprofen 10%/Lidocaine 5%/Gabapentin 5% Topical Lipoderm
- Ketamine 10%/Gabapentin 6%/Clonidine 0.2%/Nifedipine 2% Topical Lipoderm
- Gabapentin 10%/Clonidine HCl 0.2%/Baclofen 1% Topical Anhydrous Lipoderm

Electronic Mortar and Pestle provides modern method to compound consistent, high quality creams, gels and ointments



Opioid Tolerance

- Dextromethorphan HBr 30 mg SR Capsules Size #1 -- Dextromethorphan HBr 60 mg SR Capsules Size #0

Constipation with Opioids

- Naltrexone HCl 0.5 mg Capsules Size #1

Wound Care - Pain

- Morphine Sulfate 1 mg/mL Topical Gel

Exclusive Transdermal Base to Increase the permeation of a variety of actives



Radiation Burns

- Ketoprofen 2%/Lidocaine 2%/Misoprostol 0.0024%/Phenytoin 2%/Aloe Vera 0.2% Topical Cream
- Allantoin 2%/Vitamin D3 1000 IU/Gm/Aloe Vera 0.5% Compound Topical Cream

Bone Pain

- Ibuprofen 400 mg Base MBK Suppository -- Ibuprofen 600 mg Base MBK Suppository
- Ibuprofen 800 mg Base MBK Suppository -- Ibuprofen 800 mg/5mL Oral Suspension

Allodynia

If pain on the skin prohibits the use of cream, a spray or foam may make the patient comfortable enough to apply Lipoderm.

- Ketamine HCl 2%/Morphine Sulfate 2% Topical Foam / Ketamine HCl 4%/Morphine Sulfate 4% Topical Spray
- Ketamine HCl 10%/Bupivacaine HCl 0.3% Topical Spray



Amputation Pain

- Ketoprofen 20%/Ibuprofen 2%/Ketamine 2%/Clonidine 0.2% Amitriptyline HCl 2%/Guaifenesin 2% Topical Lipoderm
- Ketoprofen 10%/Guaifenesin 10%/Capsaicin 0.025%/Lidocaine 2%/Amitriptyline HCl 2% Topical Lipoderm
- Baclofen 5%/Ketoprofen 10%/Lidocaine 5%/Gabapentin 5% Topical Lipoderm
- Ketamine HCl 5%/Gabapentin 10%/Clonidine HCl 0.2%/Baclofen 2% Topical Lipoderm
- Ketoprofen 5%/Cyclobenzaprine HCl 0.5%/Lidocaine HCl 5%/Bupivacaine HCl 1% Topical Lipoderm

Inflammatory Pain from Injury

- Piroxicam 5% in Lipoderm Transdermal Gel -- Piroxicam 2% Topical Anhydrous Lipoderm
- Diclofenac Sodium 10% in Lipoderm Transdermal Gel -- Ketoprofen 10% Topical Lipoderm (Pentylene Glycol)
- Ibuprofen 20% in Lipoderm Transdermal Gel

These are just a few ideas

Tell us your need – we may have a solution!

