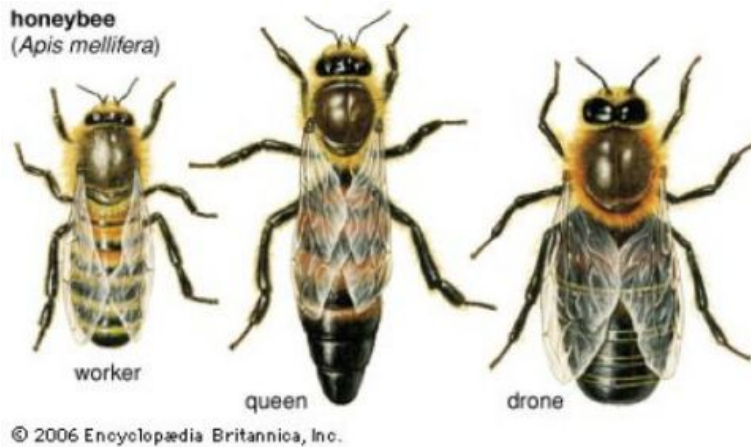


# Honey Bee Facts



## Worker

- Worker bees live about 6 weeks in the spring and summer months
- Worker bees are all female, but do not normally lay eggs
- Young worker bees spend the first 3 weeks of their life inside the hive doing housekeeping, tending the Queen, storing food, guarding the entrance, etc.
- Worker bees spend the last 3 week of their lives collecting pollen, nectar and water
- A healthy hive can have 60,000 or more worker bees
- Worker bees have a stinger and will use it if provoked, but she will die immediately after

## Queen

- Queen bees can live up to 8 years, but are usually replaced every 2-3 years
- A Queen mates only once in her life
- Queen bees can lay up to 1500 eggs per day
- Fertilized eggs are female and un-fertilized eggs are male
- Normally there is only one Queen in a hive
- It takes about 21 days for an egg to develop into a new-born worker bee

## Drone

- All male bees are drones
- Only a very small percentage of bees in a colony are male
- Drones do not sting
- Drones do no work, their only function is to mate
- Drones die immediately after they mate
- In the fall, drones that have not mated are expelled from the hive and die of exposure