



## TODAY'S PRESENTERS

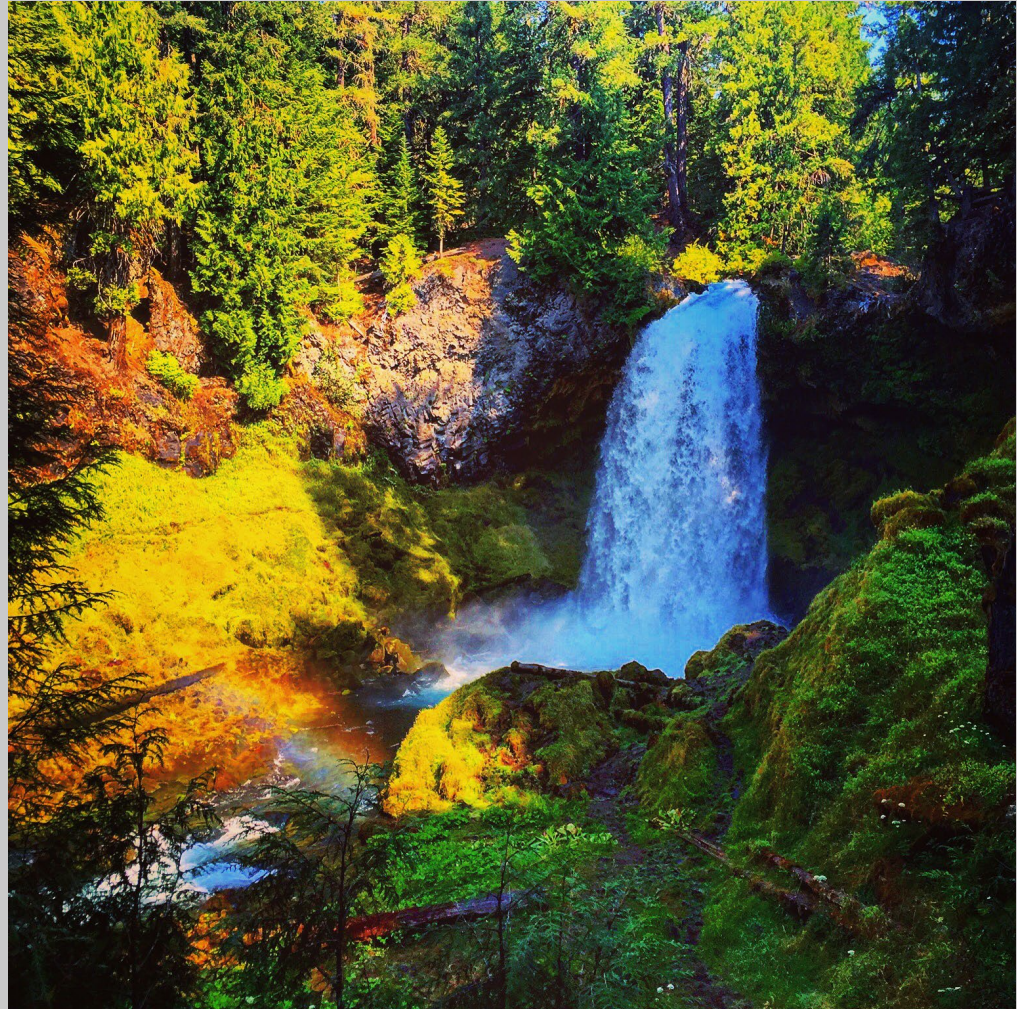
- **Kari Kuwamura, Ghisallo Cycling Initiative**
- **Edna Johnson, City of Round Rock**
- **Cherry Mendoza, Commute with Enterprise**
- **Lonny Stern, Austin Transit Partnership**



KARI KUWAMURA

























OPINION // COMMENTARY

# Commentary: Broadway belongs to San Antonio

**Kari R. Kuwamura, For the Express-News**

Updated: March 2, 2022 3:51 p.m.



1 of 2



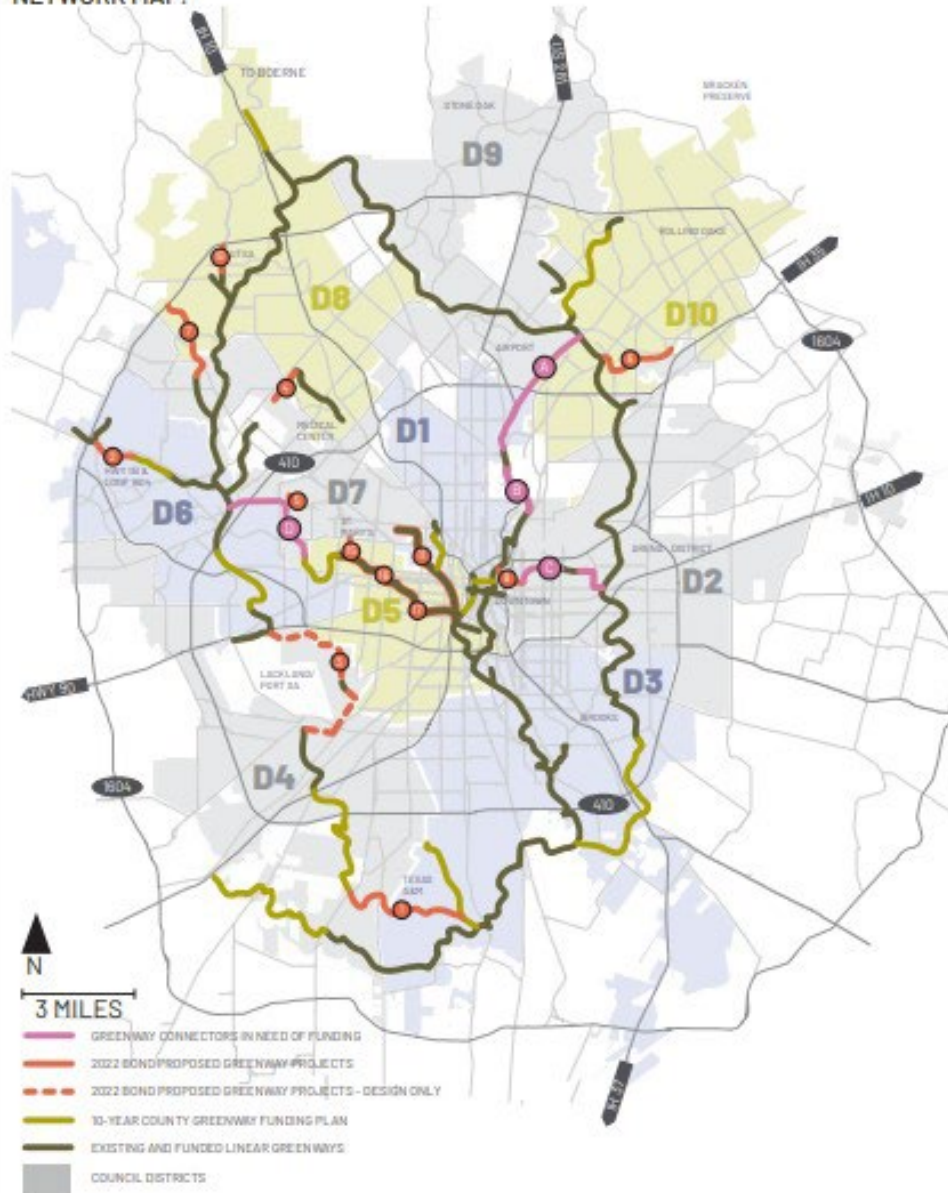
Broadway belongs to San Antonio.





# CONNECTING SAN ANTONIO'S TRAILS NETWORK

## NETWORK MAP:



## THERE IS \$103.5 MILLION FOR GREENWAY FUNDING IN THE 2022 BOND:

- 1 LEON CREEK GREENWAY (Hwy 16 to Medina River Greenway)
- 2 CULEBRA-HELOTES CONNECTOR TRAIL (Culebra Trailhead to Helotes Creek)
- 3 LEON CREEK GREENWAY CONNECTION via Port San Antonio (DESIGN ONLY)
- 4 HUEBNER CREEK TO MEDICAL CENTER TRAIL PHASE I (Floyd Curl to Eckert Rd.)
- 5 ZARZAMORA CREEK GREENWAY (Ingram Rd to Jane Dubel Park)
- 6 BEITEL CREEK GREENWAY (Thousand Oaks to LBJ Park)
- 7 FRENCH CREEK GREENWAY (OP Schnabel to Loop 1604)
- 8 HAYS STREET BRIDGE CONNECTION (SA River to Lockwood Park)
- 9 CITYWIDE GREENWAY CONNECTIONS & ENHANCEMENTS
- 10 MAVERICK CREEK GREENWAY (UTSA Blvd to Loop 1604)
- 11 WESTSIDE CREEKS - LIGHTING PILOT PROJECT
- 12 WEST COLLEGE LINK - St. Mary's & Memorial High School to Zarzamora Creek
- 13 WESTSIDE CREEKS - NEIGHBORHOOD CONNECTIVITY IMPROVEMENTS
- 14 WESTSIDE CREEKS UPGRADES

## BUT MORE CONNECTIVITY IS NEEDED:

- A THE FLYWAY (Olmos Basin to Salado Creek Greenway)
- B SPIRIT REACH BIKE HIGHWAY (Brackenridge Park to Olmos Basin)
- C EASTSIDE GREENWAY PHASES 2&3 (Lockwood Park to Salado Creek Greenway)
- D ZARZAMORA CREEK CONNECTOR (Tierra Del Sol Park to Leon Creek Greenway)





# GHISALLO

CYCLING INITIATIVE







# The Golden Rollers





**CITY**  
CYCLIST







# THANK YOU!





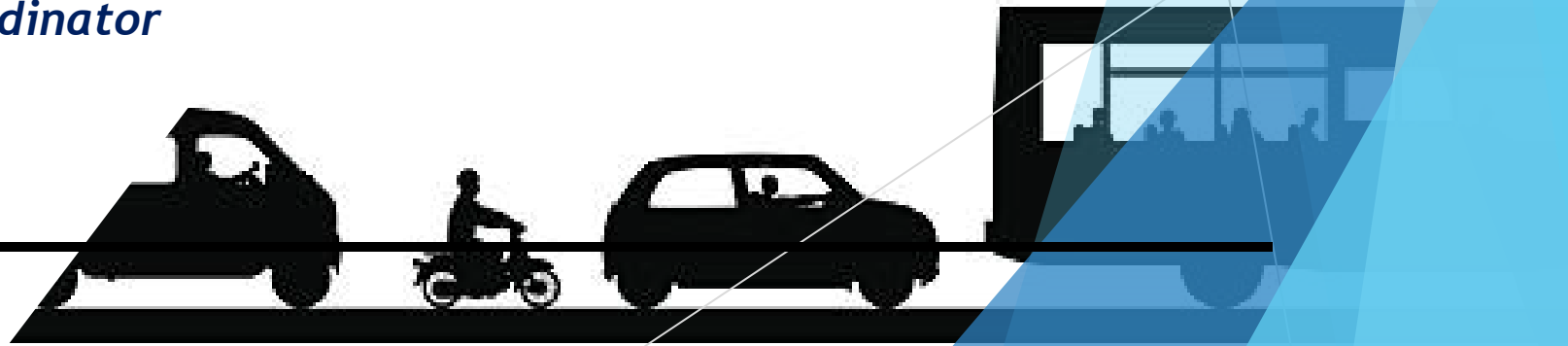
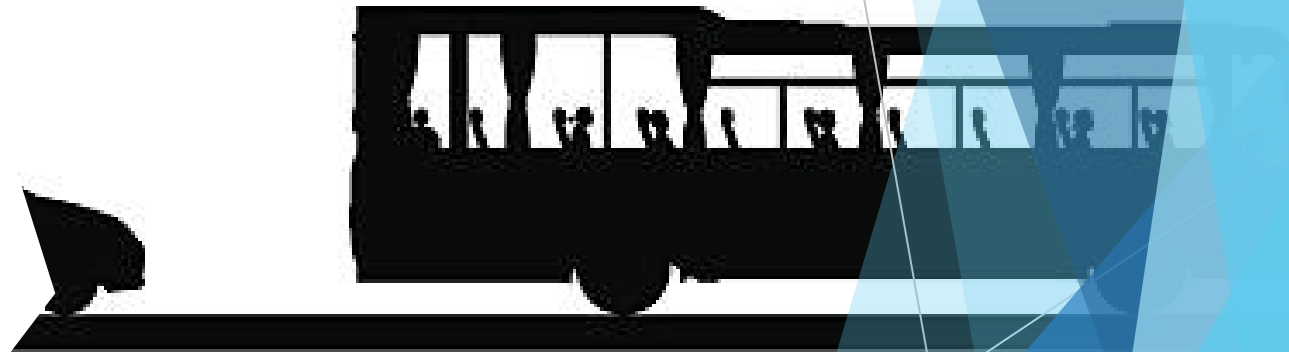
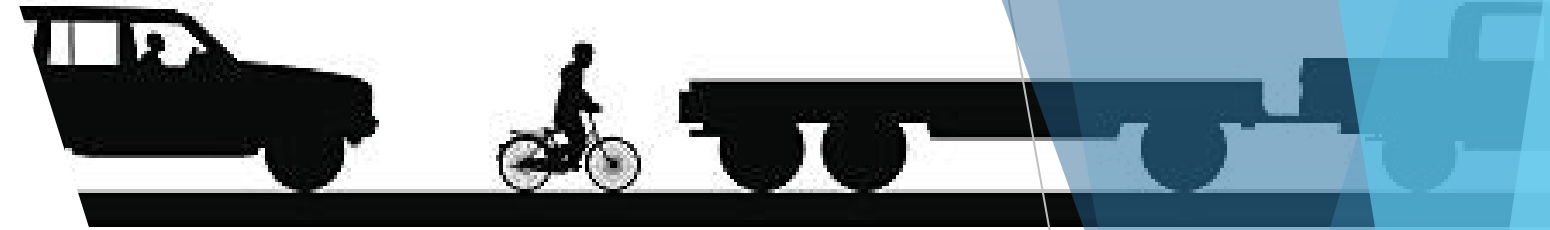
# Public Transportation

*How did we get here?*

*Edna M. Johnson, Transit Coordinator*



**ROUND ROCK TEXAS**



# The Era of Private Entrepreneurs

**GREAT OVERLAND  
MAIL ROUTE.**



**PACIFIC AND ATLANTIC STATES.  
WELLS, FARGO & CO.  
SOLE PROPRIETORS.**

**FARE REDUCED !      TIME SHORTENED !**

On and after the 1st day of April, 1867, passengers will be forwarded through at the following reduced rates, viz:

<i>Sacramento to Omaha</i> .....	<i>\$300.</i>
<i>Virginia City to Omaha</i> .....	<i>275.</i>
<i>Austin to Omaha</i> .....	<i>225.</i>
<i>Sacramento to Cheyenne</i> .....	<i>250.</i>
<i>Virginia City to Cheyenne</i> .....	<i>225.</i>
<i>Austin to Denver</i> .....	<i>175.</i>
<i>Salt Lake to Bannock, Montana</i> ....	<i>120.</i>
“ <i>Virginia</i> .....	<i>120.</i>
“ <i>Helena</i> .....	<i>145.</i>
“ <i>Fort Benton</i> .....	<i>175.</i>

ALL LEGAL TENDERS OR THEIR EQUIVALENT.

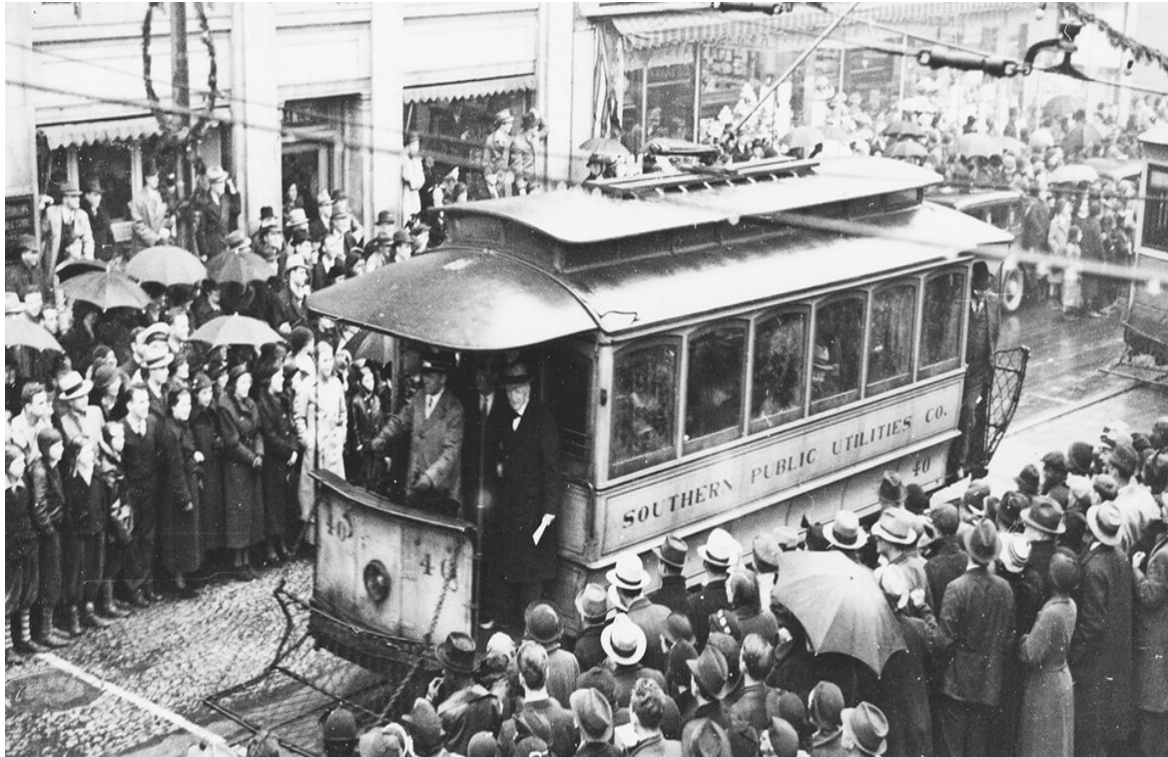
12



18<sup>th</sup>-19<sup>th</sup> Century - Carriages, Stagecoaches & Omnibus



# The Golden Age of Streetcars



## Trolleys Ruled the Roads

1875 to 1940

Austin's streetcars covering just about every part of town.



# Traction Magnates & Monopolies



Cable & Electric Cars  
required substantial capital



# Rise of the Suburbs - Real Estate Developers



# Decline of Streetcars



*1933 San Antonio first large city  
replace streetcars with buses*



1916 one automobile for every 61 persons



# From Private to Public



Transit become a public service

**Intercity Bus - Dedicated Routes**



# Federal Role

## Federal Transit Administration (FTA)

In 1964 Urban Mass Transportation Act signed into law by President Lyndon B. Johnson.



*“We are a nation of travelers. You cannot write our history without devoting many chapters to the pony express, the stagecoach, the railroad, the automobile, the airplane. . . Yet, until 1964, the Federal Government did little or nothing to help the urban commuter.” - President Lyndon B. Johnson*



# Federal Funding

# Types of Federal Funding

Formula

Competitive  
Discretionary

WHAT PART OF

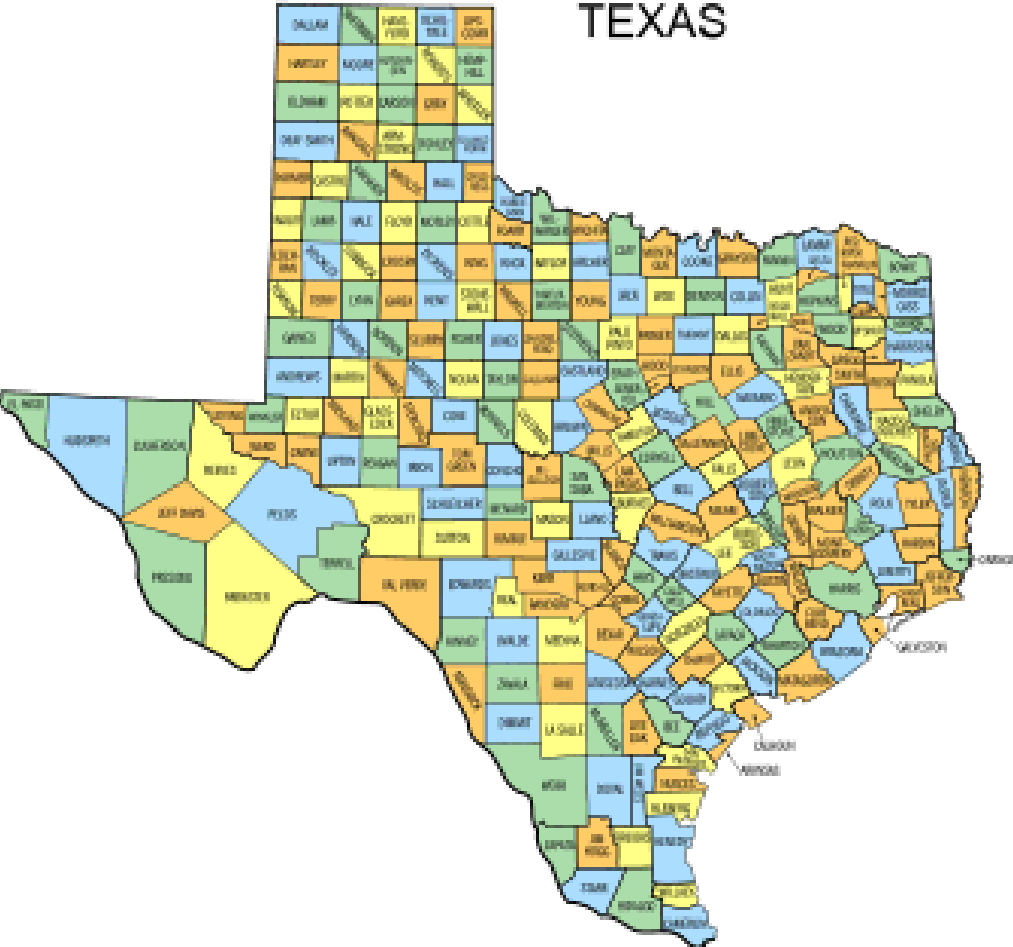
$$i\hbar \frac{\partial}{\partial t} \Psi(\vec{r}, t) = \left( -\frac{\hbar^2}{2m} \nabla^2 + V(\vec{r}, t) \right) \Psi(\vec{r}, t)$$

DON'T YOU UNDERSTAND?





# State & Local Support



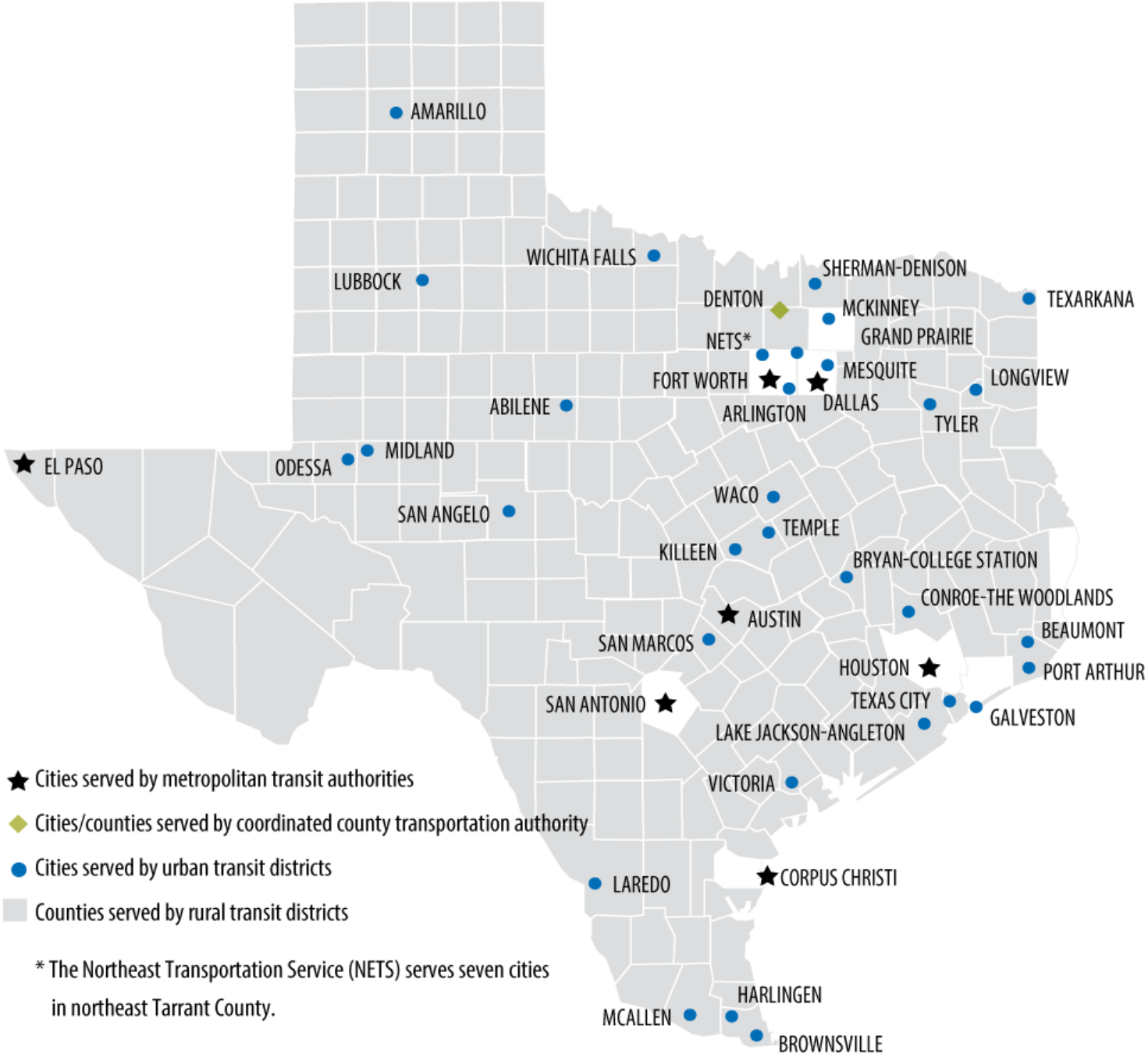
**Federal + State + County + Cities =**

# Texas Transit Agencies

8 MTAS

31 Urban

36 Rural



# Designated Recipients

Principal authority distribution of UZA funds

State and MPO concurrence

Can be single designated recipient for multiple contiguous large UZAs

FTA encourages one per UZA

Authorizes direct recipients through “split letter”

Manages sub-recipients

# Definition of Urbanized Area



U.S. Census Bureau determines Urbanized areas - every 10 years.

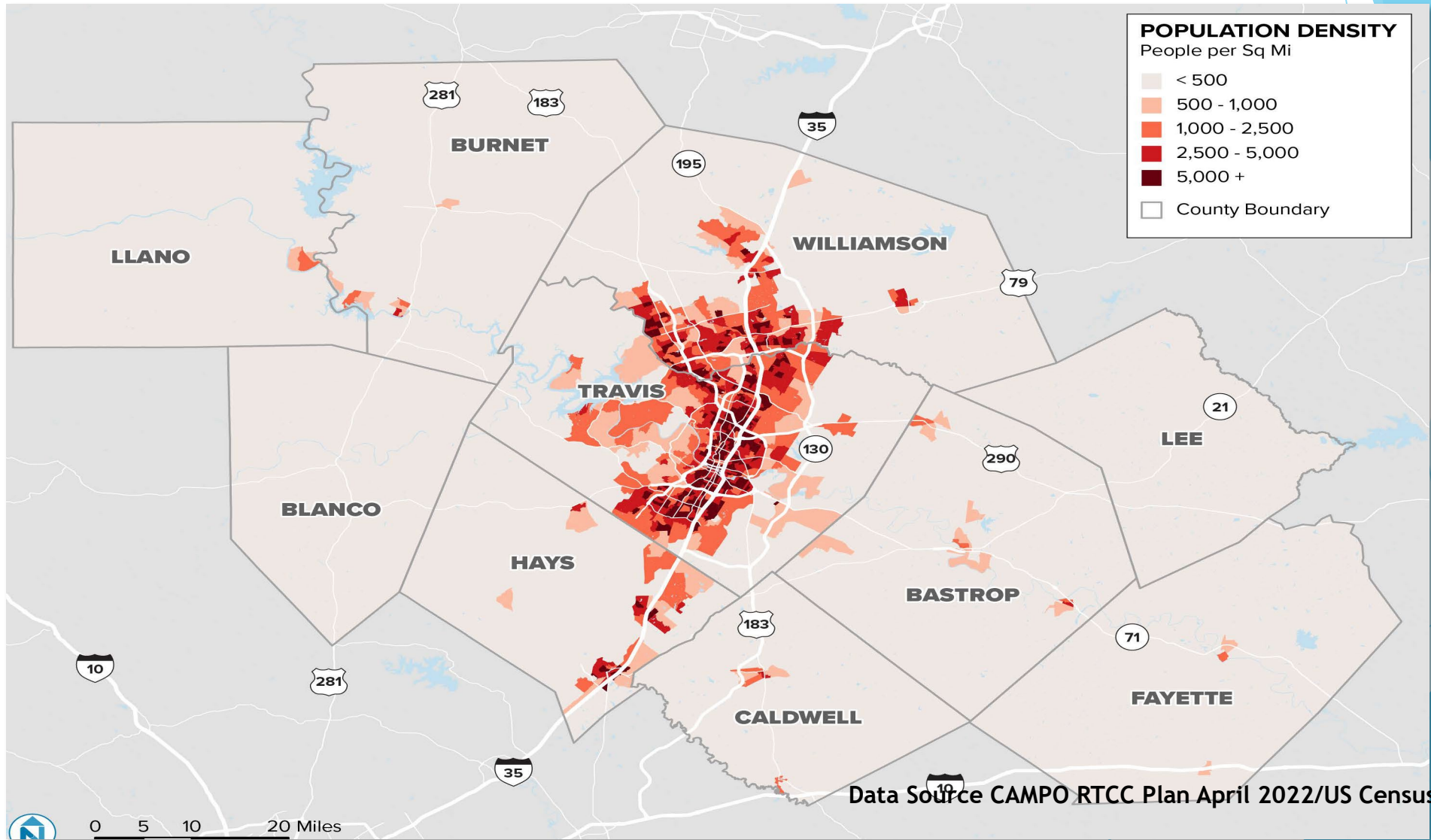
Population & Population Density

Noncontiguous Land Area

Does not correspond to any city limits or county lines.



# Population Density - Central Texas





# City of Round Rock Public Transit



## ***Fixed Route & Commuter Service***

Vehicles operating along a prescribed route according to a fixed schedule.

***Operated by Capital Metro***

## ***Complementary ADA Paratransit Service***

Door to Door for individuals with disabilities, up to 3/4 mile on each side of the fixed route.

***Operated by Star Shuttle***

# Intermodal Transit Center & Parking Garage

## Information & Ticketing

Capital Metro Routes

Greyhound Bus Lines

CARTS Interurban Routes

ADA Paratransit



## Bus Transfer Point

Capital Metro Routes

CARTS Interurban/Greyhound

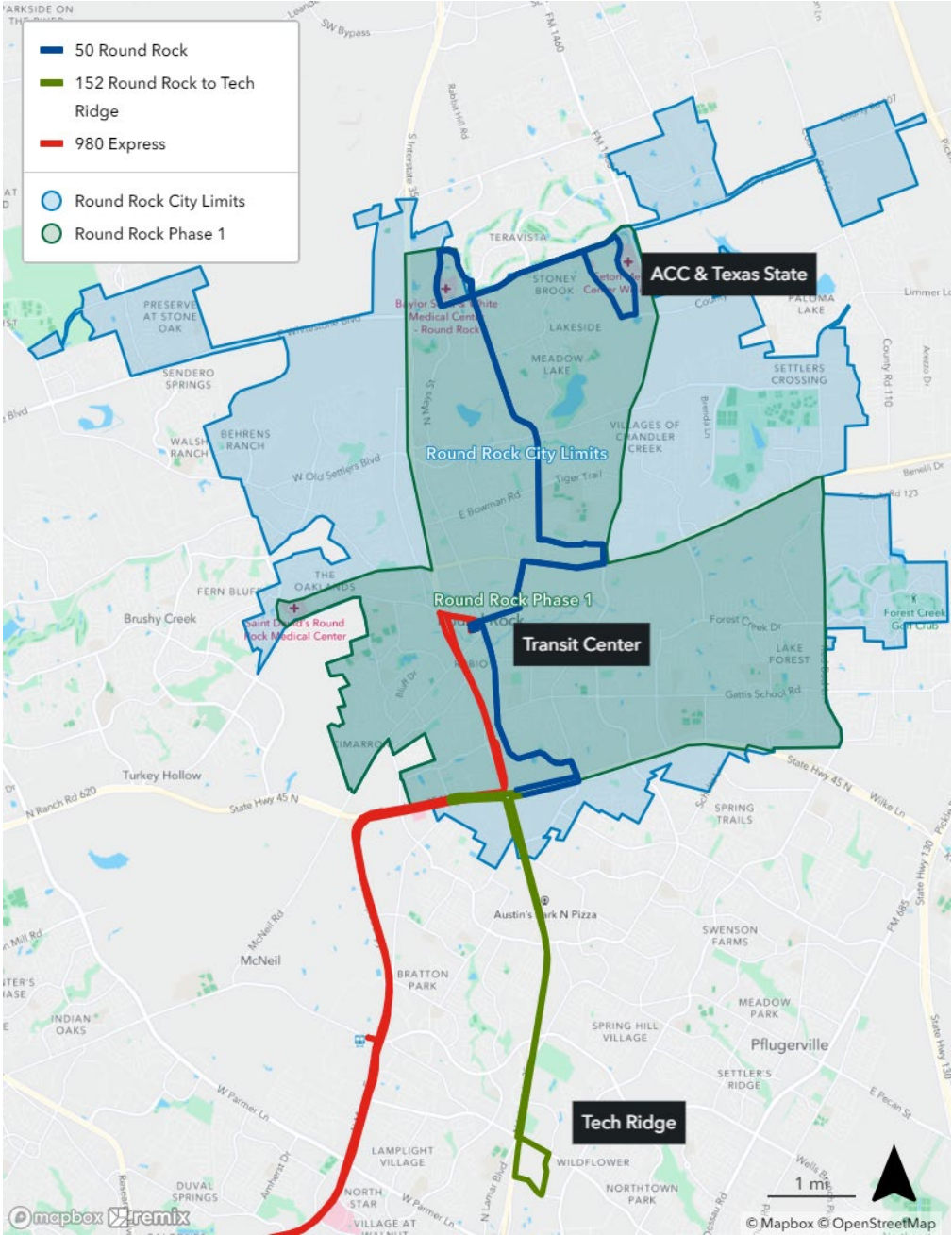
Parking Garage for Commuters





# Transit Development Plan (TDP) March 2022

## Mobility On Demand





Edna M. Johnson  
Transit Coordinator  
City of Round Rock





# A Customizable Commute Solution for Your Employees



## Disney Leading the Way

"As you've heard me say many times, creativity is the heart and soul of who we are and what we do at Disney. And in a creative business like ours, nothing can replace the ability to connect, observe and create with peers that comes from being physically together, nor the opportunity to grow professionally by learning from leaders and mentors."

- Bob Iger





## Affordable Commutes Make an Impact

Throughout 2022, the inflation of fuel prices has made it difficult for people to drive to work.

**+\$694**

Overall 2022 cost in annual commuting cost<sup>1</sup>

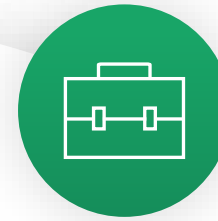
**+8%**

inflation for auto insurance and wear and tear expenses in 2022<sup>1</sup>

**+58%**

spike in gas prices compared to 2021<sup>1</sup>

# OUR UNDERSTANDING...



Recruiting,  
Competitiveness,  
Turnover & Retention



Employee  
Wellness  
Initiatives



Parking &  
Facilities



Absenteeism &  
Productivity



Diversity, Equity,  
Inclusion &  
Sustainability

Your Current  
Business  
Challenges:

# COMMUTE

with  enterprise



***“I’ve been vanpooling for over 25 years. Best way to travel—I only drive 3 times a month and the amount I pay for gas is equal to 1 week with in my personal car”***

Zita G, Commuter



# CHANGE YOUR COMPANY'S COMMUTE

See how we can make an impact on your business



Employee savings  
annually

**\$672,300**



Number of employees

**1,000**



Commuter miles reduced annually

**1,624,725**



Number of vanpoolers

**100**



CO<sub>2</sub> reduction in pounds annually\*

**1,238,181**



Potential vans

**17**



Parking spaces reduced

**83**



*We commute 63 miles one way, and our ride is 90 minutes long. We take turns driving, and the rest of the week we can take long naps before and after work.*

Pamela H, Driver

# OVERVIEW OF COMMUTE WITH ENTERPRISE



## OVER 6,800+ VANPOOLS

Removing **35,000** vehicles off the road and parking lots



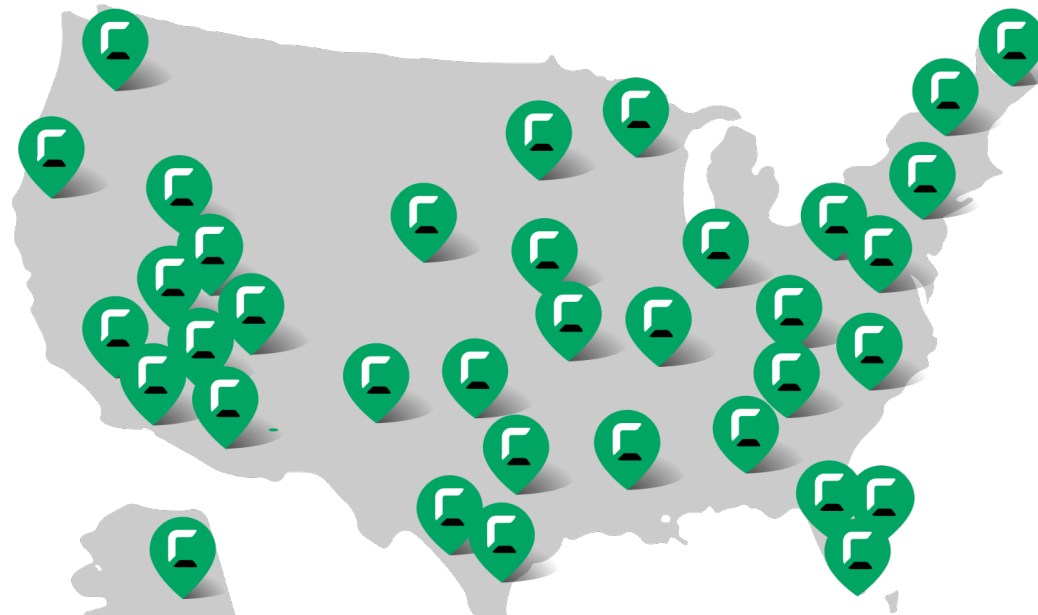
## OPERATING IN 47 STATES

With local support and dedicated account management



## ELIMINATE 843 MILLION COMMUTER MILES

Reduce more than **655 MILLION** pounds of carbon emissions annually



# COMMUTE

with  enterprise

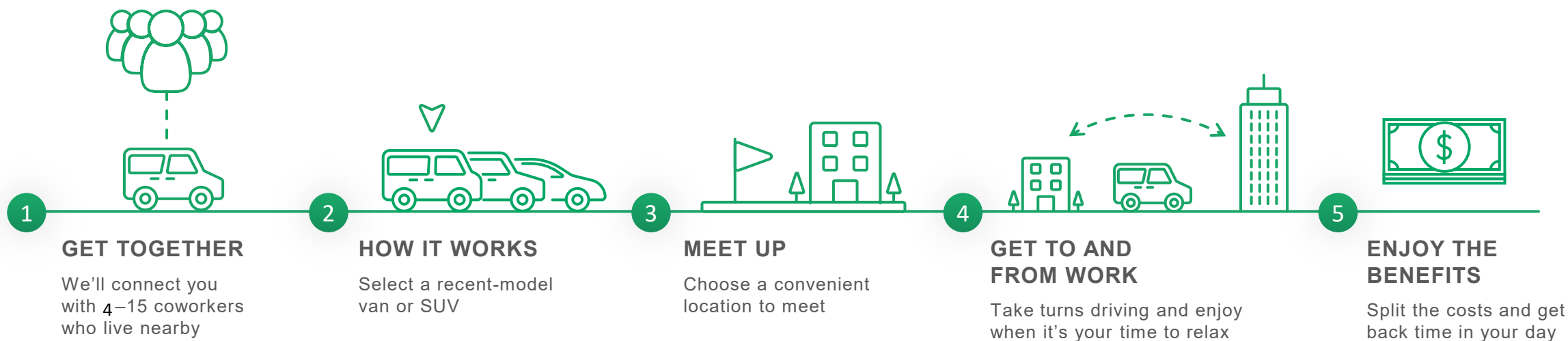


***You saved my sanity! After two days of driving to work myself, I knew finding a seat on a vanpool was a must. Your service and website are invaluable tools!!***

Lori, Commuter      Long Beach, CA

# HOW TO COMMUTE WITH ENTERPRISE

## FUNCTIONS LIKE A LARGE CARPOOL



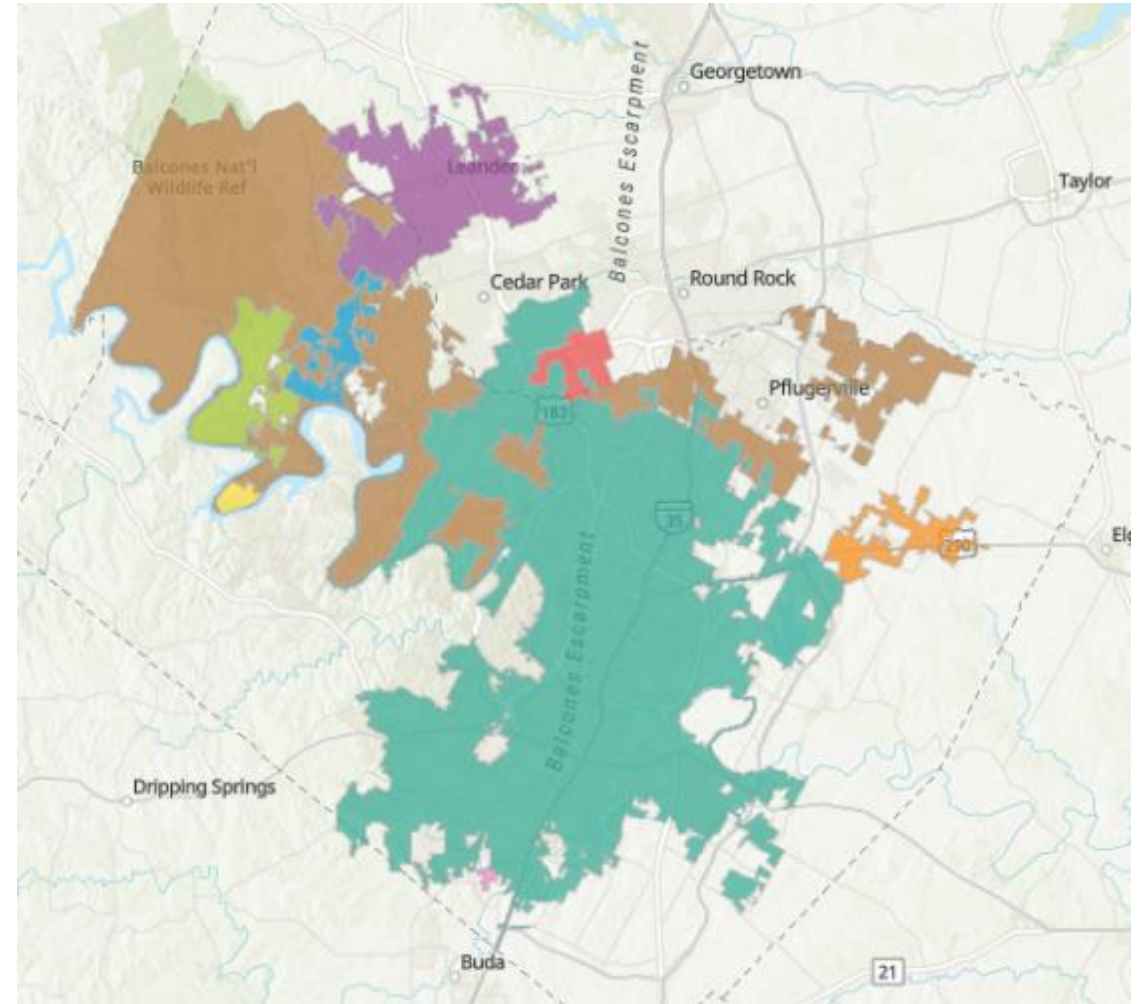


***Having the vanpool has been a huge cost savings in both gas and wear/tear on my personal vehicle! I've also been impressed with the vehicles.***

Kathy H., Coordinator



## Service Area:



The cost of a MetroRideShare vanpool varies and is based on vehicle type, commute distance, and number of riders sharing the monthly vanpool lease, plus fuel and tolls.

The program also provides groups with a monthly subsidy towards the monthly vanpool lease.

- **In Service Area** >> Groups receive a **\$500 monthly** subsidy for commutes beginning and ending inside the Capital Metro Service Area.
- **Out of Service Area** >> Groups receive a **\$450 monthly** subsidy for commutes beginning or ending inside the Capital Metro Service Area







Tolls highlighted in blue are FREE to use!

# COMMUTE

with  enterprise



*Joining the vanpool has provided a chance to unwind and read during the commute, which makes for a better transition to the workday.*

Gary V., Commuter      Lebanon, OH



# COMMUTE

with  enterprise



***“This program gives [team members] a reliable way to work while also helping them save money. It also helps offset the impact of higher fuel prices.”***

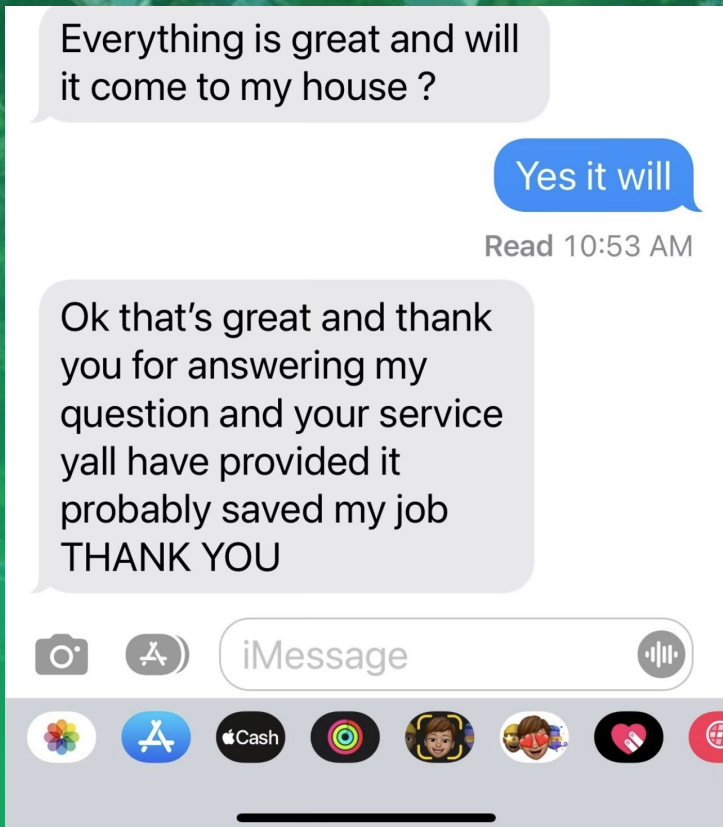
Hector Gonzalez, Head of Labor and Team Member Relations





***“Before [Commute with Enterprise], I was having transportation problems, and it was causing me to miss work. But this program is the perfect opportunity to help me out with gas, repairs and money.”***

Ida, Tyson Foods Employee



**Cherry Mendoza**  
**[Cherry.Mendoza@ehi.com](mailto:Cherry.Mendoza@ehi.com)**  
**512-276-0765**  
**Commutewithenterprise.com**



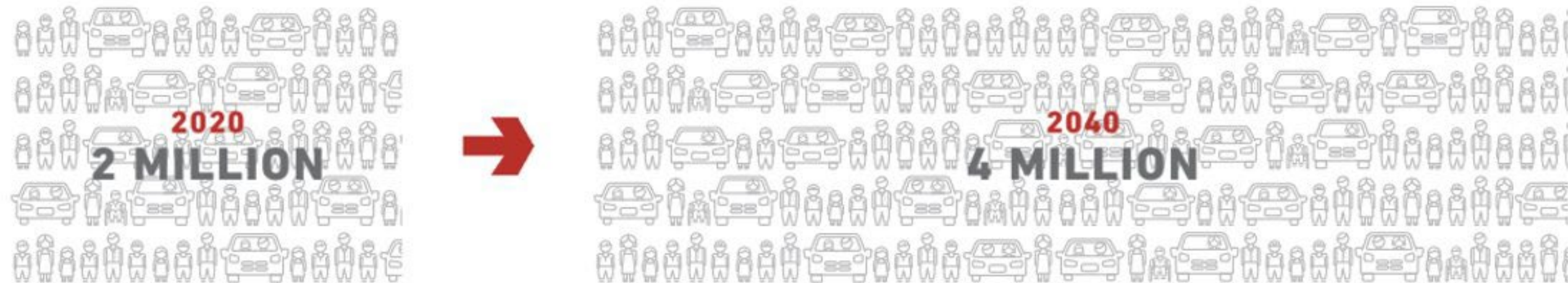






# Our region is doubling!

**Historic Population Growth**  
Austin MSA Population



# The Geometry of Transit

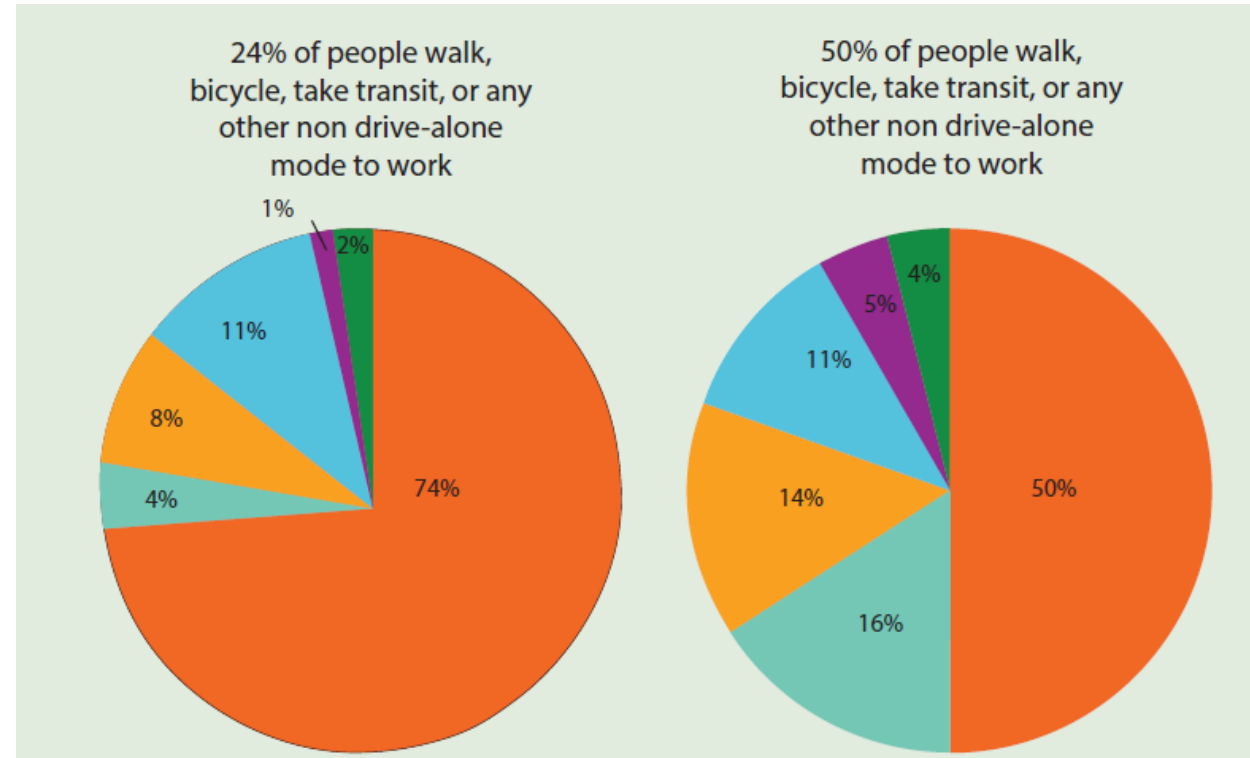


# Austin Strategic Mobility Plan



- Drive alone
- Transit
- Telework
- Walk
- Bicycle
- Carpool/Taxi/Other

**2019**















**And Transit Adventures was born!**



**Don't Just Try Transit...make it a Transit Adventure**





## Step #1: Pick an Activity



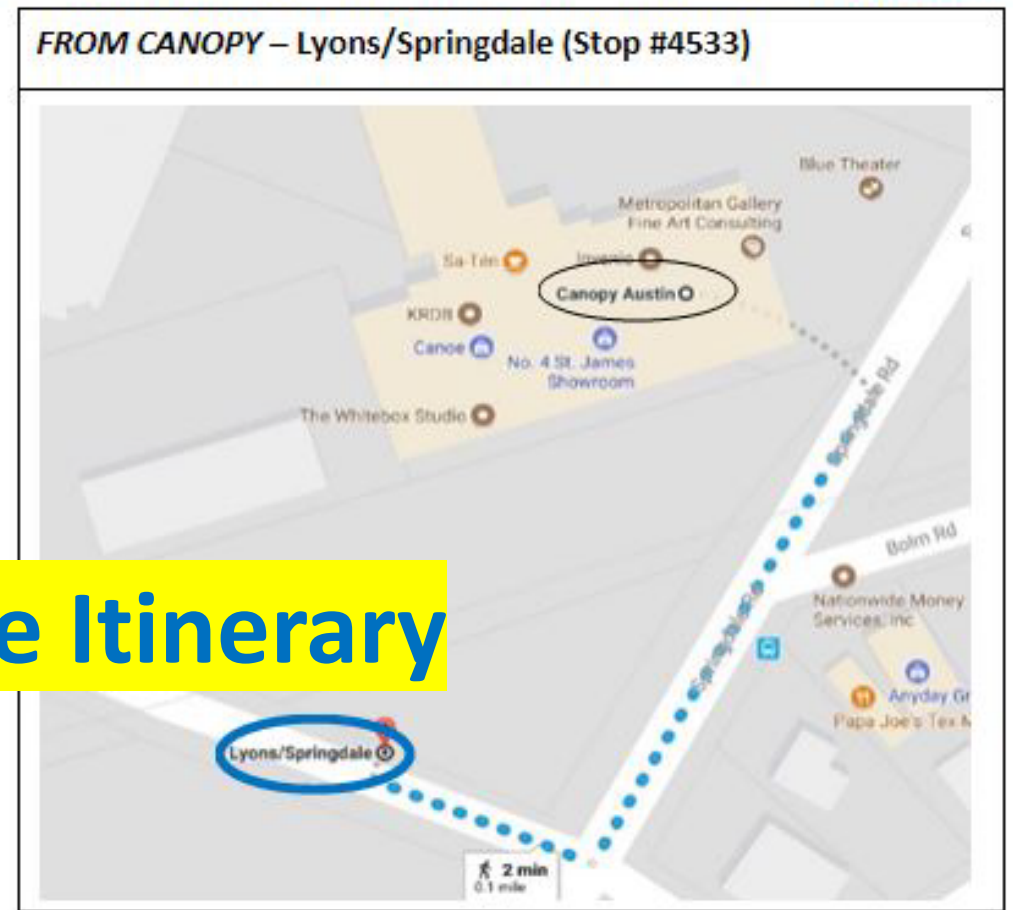


**Step #2: Plan Your Trip**

1) TO RETURN TO OLTORF WEST STATION, Take the #17 MetroBus:



1) TO RETURN TO OLTORF WEST STATION, Take the #17 MetroBus:



**Step #3: Set the Itinerary**

2) TRANSFER at CRESTVIEW STATION – Southbound (Stop #5867)

#803 Rapid » arriving every 15 minutes!

2) TRANSFER at CRESTVIEW STATION – Southbound (Stop #5867)

#803 Rapid » arriving every 15 minutes!

**Plan your trip**

ON THE WEB | <http://www.capmetro.org>

ON YOUR PHONE | <http://www.capmetro.org/app>

**Plan your trip**

ON THE WEB | <http://www.capmetro.org>

ON YOUR PHONE | <http://www.capmetro.org/app>



## Step #4: Get People to Ride

JUN  
17

### TRANSIT ADVENTURE (6/17) | Willy Wonka & the Chocolate Factory

by Capital Metro

FREE



REGISTER

#### DESCRIPTION

Taking the kids to the Paramount Theatre for the Summer Classic Film Series screening of *Willy Wonka & the Chocolate Factory* is a dream come true, until you realize you'll finish an everlasting gobstopper faster than you'll find a place to park!

#### DATE AND TIME

Sat, June 17, 2017  
12:00 PM – 3:30 PM CDT  
[Add to Calendar](#)

A man wearing a black polo shirt, khaki shorts, sunglasses, and a bright yellow safety vest is speaking to a group of people outdoors. He is holding a small card or piece of paper. The group consists of several women, some wearing sunglasses and casual summer attire. One woman on the right is wearing a grey bicycle helmet and a striped tank top, standing next to a green bicycle. In the background, there is a building with a sign that partially reads "TALK" and a door with the number "4002". The scene is brightly lit, suggesting a sunny day.

## Step #5: Host an Adventure



**Step #5: Host an Adventure (cont).**





**Step #6: Take Pictures!**





# Step #7: Post on Social Media



CapMetro's albums

## Transit Adventures

Capital Metro can arrange for your office, school, neighborhood, church or organization to explore the city in a whole new way!

September 2019 · 🕒 · 🌐

[Add photos or videos](#)

👍 88

9 comments 8 sh

👍 Like   💬 Comment   ➦ Share   🌐



**Step #8: Have Fun!**

