



COMPOSITION ROOF  
FIBER CEMENT PANEL  
MTL. GUARDRAIL  
FIBER CEMENT SIDING  
FOAM AND STUCCO TRIM  
FIBER CEMENT SIDING  
MFR. STONE

HEEL  
HEEL  
T.O.P. 1'-0"  
T.O.D. 9'-2.5/8"  
T.O.P. 1'-6.3/4"  
T.O.D. 9'-2.5/8"  
T.O.P. 1'-6.3/4"  
T.O.F. 9'-1.1/8"



**S1 - STONE**  
MANUFACTURER:  
NEVILSTONE  
COLOR: AZURE  
MORTAR:  
ANTIQUE WHITE  
AUSTIN STONE,  
VENEER STONE



**P1 - PAINT**  
MANUFACTURER:  
SHERWIN WILLIAMS  
COLOR: ANEW GRAY  
SW7030  
HARDIE SIDING,  
HARDIESHINGLE  
SIDING & GABLES  
STUCCO



**P2 - PAINT**  
MANUFACTURER:  
SHERWIN WILLIAMS  
COLOR: ANONYMOUS  
SW7046  
BALCONY & HARDIE  
SIDING



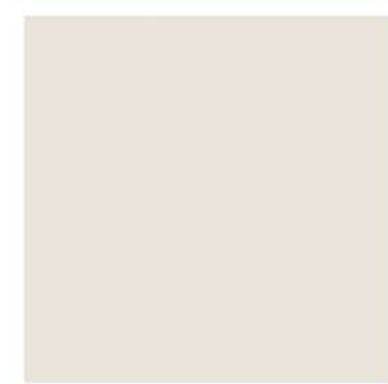
**P3 - PAINT**  
MANUFACTURER:  
SHERWIN WILLIAMS  
COLOR: WILLOW TREE  
SW7741  
HARDIE SIDING



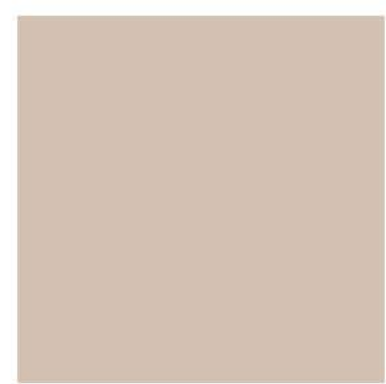
**P4 - PAINT**  
MANUFACTURER:  
SHERWIN WILLIAMS  
COLOR: FORESTWOOD  
SW7730  
HARDIE SIDING



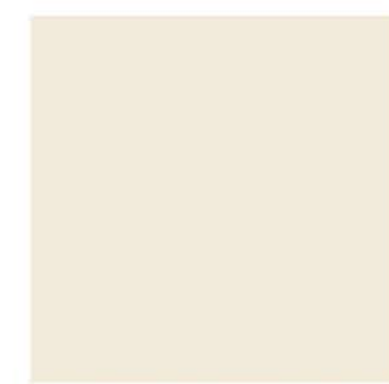
**P5 - PAINT**  
MANUFACTURER:  
SHERWIN WILLIAMS  
COLOR: ENDURING  
BRONZE SW7055  
BRACKETS, WINDOW  
TRIM, ENTRY DOOR,  
BANDING BOARDS,  
RAILING, ALL METAL  
DETAIL, GUARDRAILS  
& FENCE



**P6 - PAINT**  
MANUFACTURER:  
SHERWIN WILLIAMS  
COLOR: PEARLY WHITE  
SW7009  
FASCIAS, EAVES,  
GUTTER, SOFFIT,  
WINDOW TRIM, DOOR  
TRIM, COLUMNS,  
BANDING BOARDS &  
ACCENT TRIM



**W1 - WINDOWS**  
MANUFACTURER:  
PLY-GEM  
COLOR: BEIGE  
FULL WINDOWS



**D1 - DOWNSPOUTS**  
MANUFACTURER:  
SENOX  
COLOR: CAMEO  
DOWNSPOUTS



**R1 - ROOF**  
MANUFACTURER:  
GAF  
COLOR: NANTUCKET  
MORNING  
TIMBERLINE  
AMERICAN HARVEST  
ASPHALT SHINGLES



**GD1- GARAGE DOOR**  
MANUFACTURER:  
OVERHEAD DOOR  
COLOR: TERRA BRONZE  
COURTYARD  
COLLECTION GARAGE  
DOOR PANEL STYLE  
375 T / 165 T

## NORTH CREEK MULTI FAMILY MATERIAL BOARD - BLDG A

### HUTTO, TEXAS



SCALE 1/8"=1'-0"