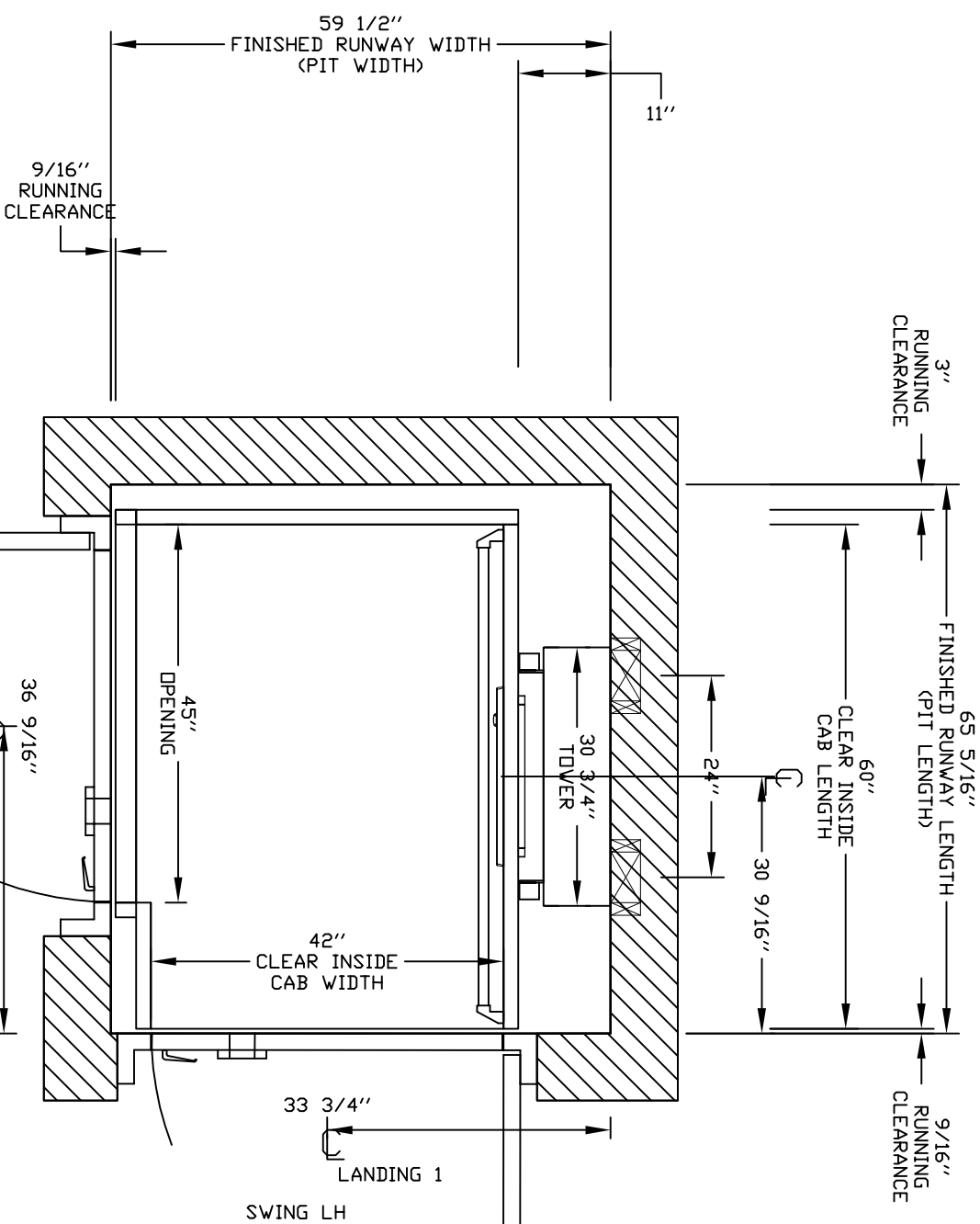
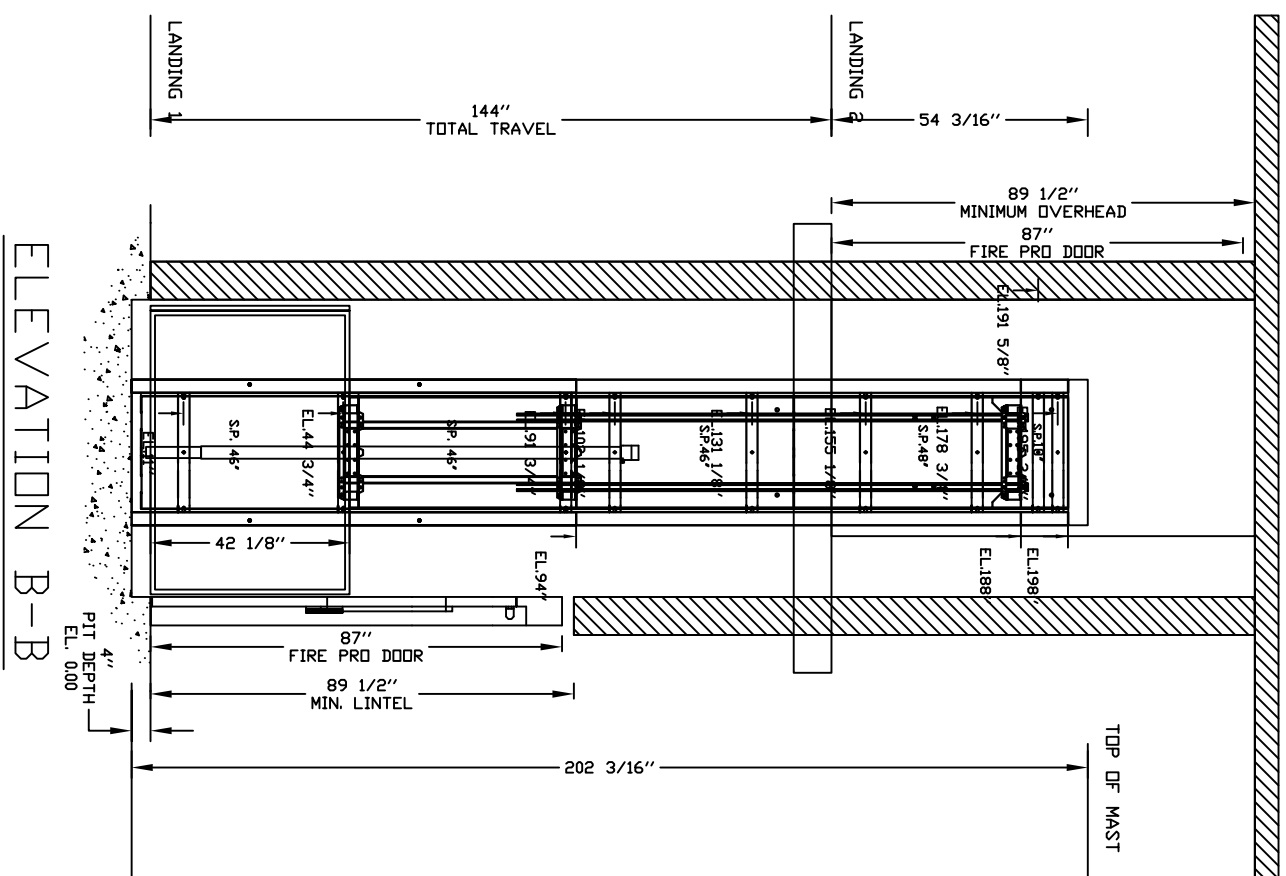


PLEASE NOTE:
 OVERALL HOISTWAY LENGTH AND
 WIDTH DIMENSIONS ARE FROM DRYWALL
 TO DRYWALL (WHERE APPLICABLE)

TYPICAL PLAN



PRELIMINARY DRAWING ONLY DRAWING APPROVAL:

THIS DRAWING REFLECTS OUR INTERPRETATION OF THE INFORMATION PROVIDED BY THE DEALER ON THE ORDER FORM. THIS INFORMATION IS THE DEALER'S RESPONSIBILITY, AND IS THE BASIS FROM WHICH THIS LIFT IS DESIGNED AND MANUFACTURED. PLEASE INDICATE THE REQUESTED ACTION BY CHECKING ONE OF THE FOLLOWING BOXES AND SIGNING BELOW TO AUTHORIZE COMPLETION OF THIS ORDER.

- APPROVED WITH NO EXCEPTIONS
- APPROVED WITH EXCEPTIONS, NO REAPPROVAL REQUIRED
- APPROVED WITH EXCEPTIONS, NO REAPPROVAL REQUIRED
- MAKE CHANGES AS NOTED, NO REAPPROVAL DRAWING REQUIRED
- MAKE CHANGES AS NOTED, SEND CORRECTED DRAWING FOR REAPPROVAL BEFORE MANUFACTURE

CHANGES REQUEST:

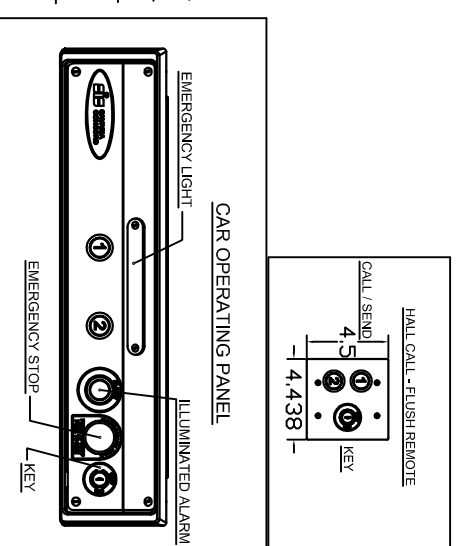
1. _____
2. _____
3. _____
4. _____

SIGNATURE: _____ DATE: _____
 CAUTION: ONCE THE DRAWING IS APPROVED, JOB CANCELLATION FEES WILL APPLY

OFFICE USE ONLY:

COMPARISON VERSION STAMP: 0.1
 MODULE VERSION STAMP: R5-1512

Part No. V-1504
 Variant No. 30027975



GENERAL ARRANGEMENT
 ENCLOSED VERTICAL WHEELCHAIR PLATFORM LIFT

CUSTOMER: AMERICAN HOME ELEVATOR
 PROJECT: _____
 ADDRESS: No. Street, City

DATE: 11-16-17
 REGION DATE: 11/16/17
 COMPLETED BY: DOMINIQUE
 JOB No. 2191891 DF 5



PROVISIONS BY OTHERS

SPECIFICATIONS

GENERAL

HOISTWAY - THE HOISTWAY MUST BE DESIGNED AND BUILT IN ACCORDANCE WITH "SAFETY STANDARD FOR PLATFORM LIFTS AND STAIRWAY CHAIRLIFTS" OR "SAFETY CODE FOR ELEVATORS AND ESCALATORS" AND ALL STATE AND LOCAL CODES.

PLUMB RUNWAY - DUE TO CLOSE RUNNING CLEARANCES OWNER/AGENT MUST ENSURE THAT HOISTWAY AND PIT (WHERE PROVIDED) ARE LEVEL, PLUMB (-/+ 1/8" (3 mm)) AND SQUARE AND ARE IN ACCORDANCE WITH THE DIMENSIONS ON THESE DRAWINGS.

MINIMUM OVERHEAD CLEARANCE - OWNER/AGENT MUST ENSURE MINIMUM OVERHEAD CLEARANCE IS IN COMPLIANCE WITH CODES.

CONSTRUCTION SITE - OWNER/AGENT TO PROVIDE ALL MASONRY, CARPENTRY AND DRYWALL WORK AS REQUIRED AND SHALL PATCH AND MAKE GOOD (INCLUDING FINISH PAINTING) ALL AREAS WHERE WALLS/FLOORS MAY REQUIRE TO BE CUT, DRILLED OR ALTERED IN ANY WAY TO PERMIT THE PROPER INSTALLATION OF THE LIFT.

DIMENSIONS - CONTRACTOR/CUSTOMER TO VERIFY ALL DIMENSIONS AND REPORT ANY DISCREPANCIES TO OUR OFFICE IMMEDIATELY.

STRUCTURAL

FLOOR/SUPPORT WALL LOADS - CONTRACTOR TO ASSURE THAT BUILDING AND SHAFT WILL SAFELY SUPPORT ALL LOADS IMPOSED BY THE LIFT EQUIPMENT. REFER TO THE LOAD DIAGRAM ON THIS DRAWING.

MAST TO BE SECURELY FASTENED - WHERE REQUIRED THE MAST MUST BE SECURELY FASTENED TO THE STRUCTURAL SUPPORT WALL. REFER TO WALL / FLOOR SUPPORT LOAD DIAGRAM AND WALL LAG DIMENSIONS ON THIS DRAWING.

WHERE DOORS ARE REQUIRED - SUITABLE LINTELS MUST BE PROVIDED BY OWNER/AGENT. DOOR FRAMES ARE NOT DESIGNED TO SUPPORT OVERHEAD WALL LOADS.

ELECTRICAL

GENERAL - ELECTRICAL EQUIPMENT AND WIRING TO COMPLY WITH SECTION 38 OF CSA C22.1 (CANADA) OR SECTION 620 OF NEC ANSI/NFPA 70 (USA).

POWER SUPPLY - 120VAC, 20A, 60HZ, 1PH CIRCUIT THROUGH A FUSE DISCONNECT WITH AUXILIARY CONTACT ON MAIN POWER SUPPLY. PROVIDE TWO 18 AWG CONDUCTORS BETWEEN CONTACT AND CONTROLLER.

LIGHTING - LIGHTING OF 100 LX MIN. AT PLATFORM AND LANDINGS. LIGHTING WITH SWITCH AND ELECTRICAL GFCI OUTLET IN HOISTWAY PIT.

PHONE - IF A TELEPHONE CIRCUIT IS REQUIRED, JACK OR PHONE ARE PROVIDED ON THE CAR. A DEDICATED ANALOG PHONE LINE (NO VOIP) IS REQUIRED TO BE PROVIDED BY OTHERS TO THE CONTROLLER FOR VOIP, PLEASE CONTACT SAVARIA.

ENTRANCES

UPPER LANDING GATES - WHERE REQUIRED, SMOOTH SOLID BARRIERS ARE TO BE SUPPLIED AND INSTALLED ON BOTH SIDES OF ENTRANCE AT UPPER LEVEL AND MUST BE A MINIMUM OF 42" (1067 mm) HIGH. ENTRANCE ASSEMBLY MUST BE IN PLACE PRIOR TO THIS PROVISION.

FASCIA PANEL BELOW UPPER LEVEL ENTRANCE - WHERE REQUIRED, FASCIA PANEL MUST BE FASTENED TO A SOLID WALL AND BE PERPENDICULAR TO THE FLOOR AND WALLS. HOISTWAY FASCIA IS NOT SELF-SUPPORTING FOR LONG, CONTINUOUS RUNS VOID OF ENTRANCES. ADEQUATE SUPPORT FOR THE FASCIA MUST BE PROVIDED.

ENTRANCE ASSEMBLIES - ENTRANCE ASSEMBLIES MUST BE ADJUSTED TO ALIGN WITH PLATFORM AND INTERLOCK EQUIPMENT. OTHERS TO ALLOW AN ADEQUATE ROUGH OPENING.

RETURN WALLS - RETURN WALLS AT ENTRANCES MUST BE BUILT-IN BY OTHERS AFTER ENTRANCE ASSEMBLIES ARE IN PLACE. ENTRANCE ASSEMBLY MUST BE SECURELY FASTENED TO WALLS.

GENERAL

CLASSIFICATION: Enclosed Vertical Wheelchair Platform Lift
APPLIED CODE: ASME A18.1-2008 Section 2 Pub
SPECIAL NOTE:
MODEL: V-1504
CAPACITY: 750 lbs (341 kg)
SPEED: 20 fpm (0.102 m/s)
TRAVEL: 144" (3658 mm)
PIT DEPTH: 4" (102 mm)
PLATFORM SIZE: 42" X 60" (1067 mm X 1524 mm)
POWER SUPPLY: 120V, 20A, 60HZ, SINGLE PHASE
BATTERY BACK UP: down direction only

JACK UNIT

STROKE: 84" (2134 mm)
PLUNGER D/D: 2.0" (51 mm)
CYL. D/D: 2.625" (67 mm)
CYL. I/D: 2.25" (57 mm)

CONTROLLER

MODEL: V-1504
TYPE: CPFS
ETL #: 94307
CONTROL VOLTS: 24VDC
CONTROL AMPS: 1 A
HP: 1.5 HP USED FROM 3HP MOTOR
AMPS: 15 AMPS
MFR: SAVARIA

POWER UNIT

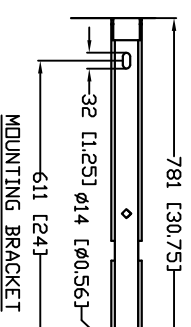
MOTOR: 3.0 HP, 24V DC
FLOW: 1.15 Gal/min (4.35L/min)
CAB FINISH: STEEL W PAINT

HYDRAULIC DATA

DIL TYPE: UNIVIS 32 INDDDR
GALLONS REQ'D: DEXRON ATF OUTDDDR
MAXIMUM WORKING PRESSURE: 1.5 Gal (5.68 L)
RELIEF PRESSURE: 2500 psi (17.2 MPa)
MAXIMUM RELIEF PRESSURE: W/PX125% MAX.
HYDRAULIC HOSE: 2500 psi (17.2 MPa)
FITTINGS: 1/4" (6.4 mm) ID
 20000 psi (137.9 MPa)
 1/4" (6.4 mm) NPT MALE

SUSPENSION CHAIN

2X #50 ROLLER CHAIN
BREAKING STRENGTH: 7171 lbs (31.9 kN) each
SAFETY BRAKE: TYPE 'A'



DOORS / GATES / CALL STATIONS

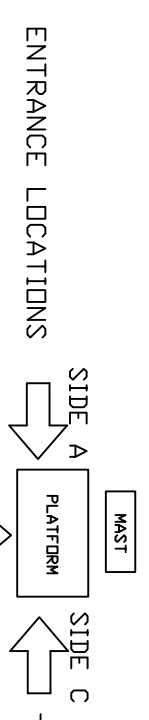
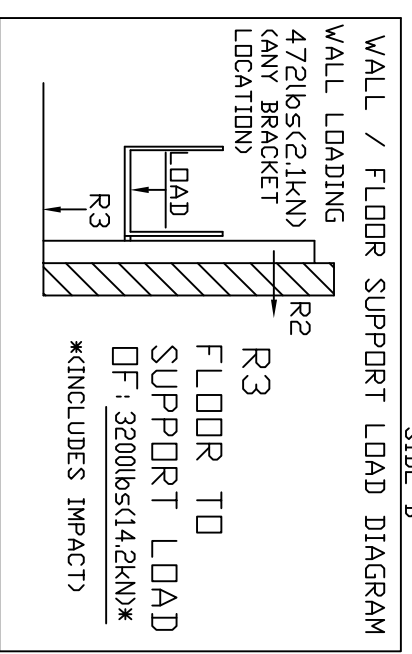
	LANDING 1	LANDING 2	LANDING 3	LANDING 4
DOOR TYPE	Fire Rated Pro Door	Fire Rated Pro Door		
ENTRANCE SIDE	c	b		
DOOR SWING	lh	rh		
DOOR INSERT	Not Applicable	Not Applicable		
LOCK TYPE	Pro Lock (24V) Indoor only	Pro Lock (24V) Indoor only		
AUTO DOOR OPENER	Pro Door Opener II	Pro Door Opener II		
CUSTOM DOOR WIDTH				
CUSTOM DOOR HEIGHT				
IN FRAME CALL STN.	no	no		
CALL STN. TYPE	Call/Send Buttons	Call/Send Buttons		
CALL STN. KEYPAD	Dr/Dff Pos. Removable	Dr/Dff Pos. Removable		
CALL STN. STOP BUTTON	Flush Mounted Remote	Flush Mounted Remote		
CALL STN. MOUNTING	Flush Mounted Remote	Flush Mounted Remote		
INSULATED PRODOOR KIT	No	No		

OPTIONS PROVIDED

EMERGENCY PENDENT PLUG IN MANUAL LOWERING BOX

WINGS: no
TOUCH UP PAINT: 1 cans(s)
BUILDING: Public Building
LIGHT CURTAIN: no
PHONE OR PHONE PLUG: No Phone, Plug Incl
FLODD SWITCH: no
REMOTE MACHINE ROOM: Not required
LOCATION: INDDOR

RAMP: No Ramp Required
EXTRA KEYS: 0
WALL FASTENERS: conc
UNDERPAN SENSOR: no
UNIT COLOUR: Dark Grey PS311A13
FLOOR: Anti-Skid Paint (Grey)
FOLD SEAT: no



LOADS CALCULATED ON BASED ON ANCHOR POINTS EVERY 48' EVERY TOWER SECTION NEEDS TO BE ANCHORED. IF SPACING IS INCREASED, LOADS PER BRACKETS WILL INCREASE ACCORDINGLY

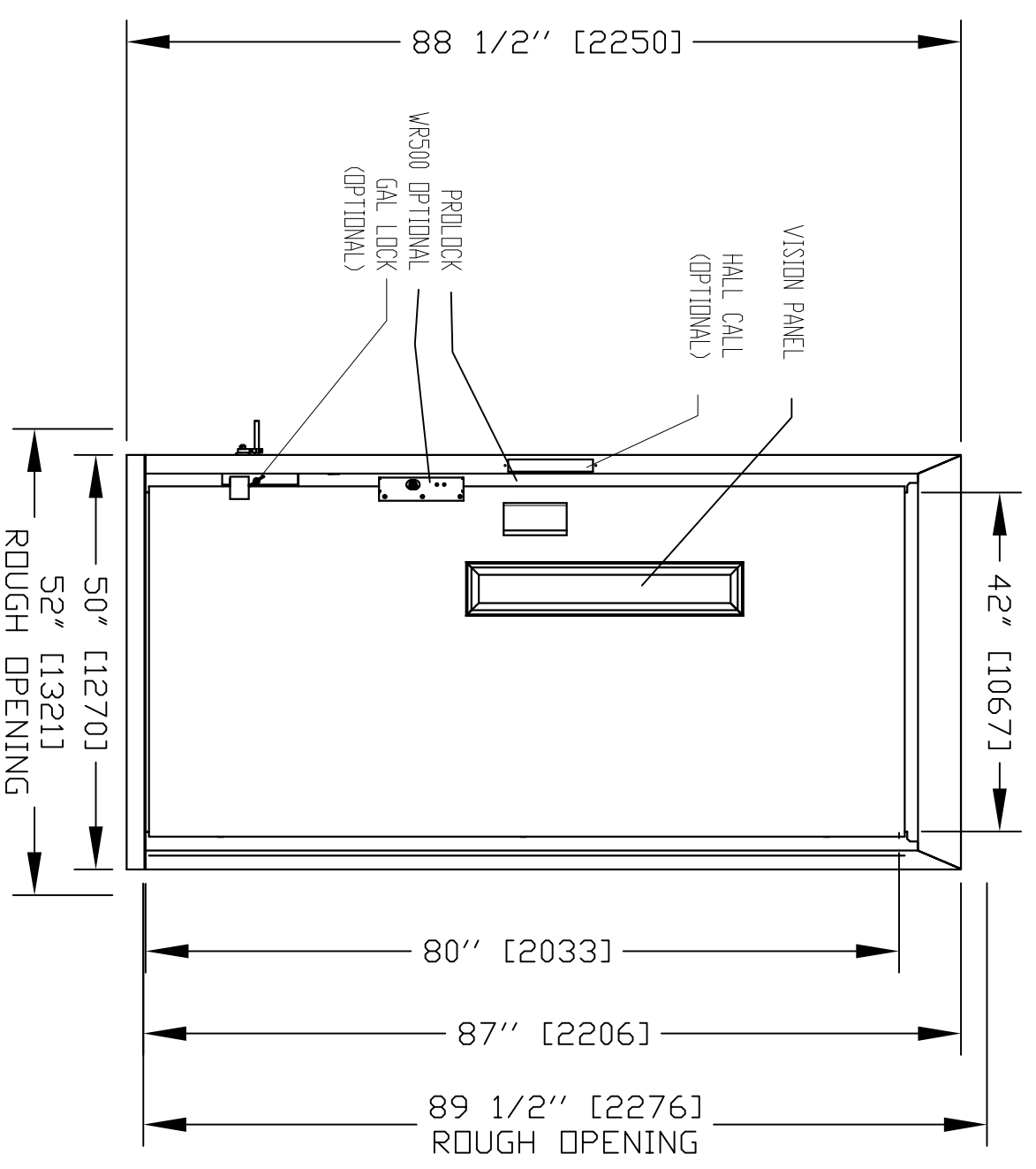
DATA SHEET
 ENCLOSED VERTICAL WHEELCHAIR PLATFORM LIFT

CUSTOMER: AMERICAN HOME ELEVATOR
PROJECT: [Blank]
ADDRESS: [Blank]
DATE: 11-16-17
COMPLETED BY: DOMINIQUE
JOB NO.: 219189
SHEET NO.: 2 OF 5

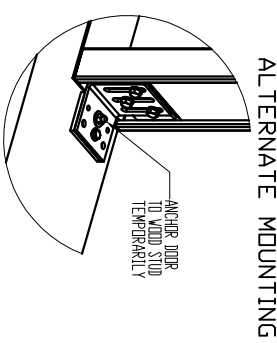
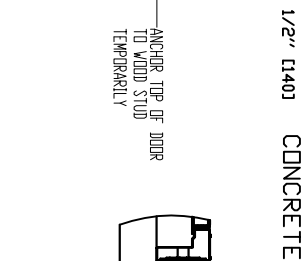
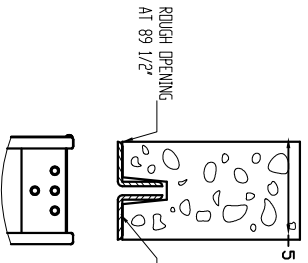
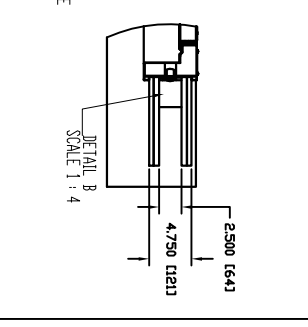
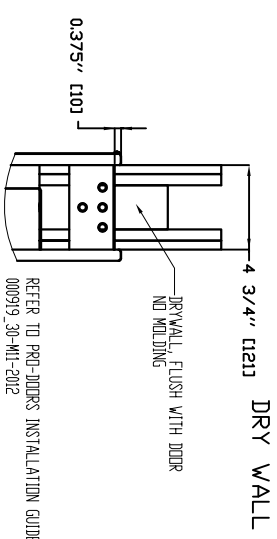
OFFICE USE ONLY:
 CONFIGURATION VERSION STAMP: 0.1
 MODULE VERSION STAMP: 18-1512

Part No. V-1504
 Variant No. 30027975





FRONT VIEW



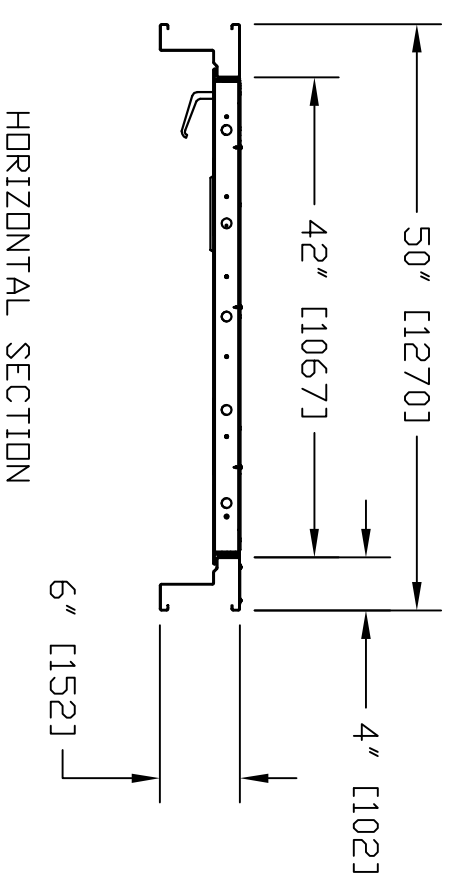
ANCHOR TO WALL (WALL NOT SHOWN)

ALTERNATE MOUNTING

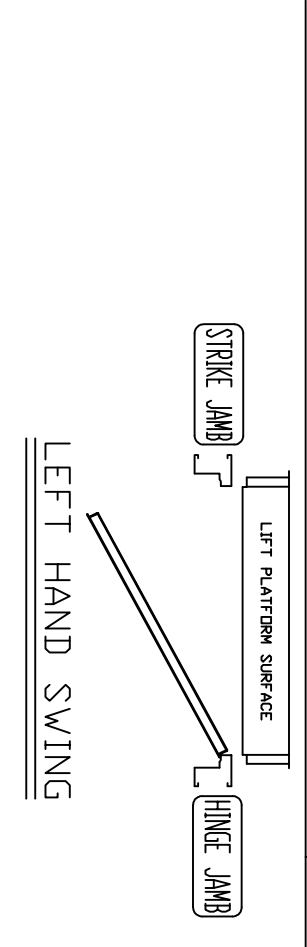
- NOTES:
- A) DRYWALL OR PARTING (BY OTHERS) AS REQ'D.
 - B) SEE DATASHEET OF THE INSTALLATION DRAWING FOR LANDING ENTRANCE SCHEDULE AND RUNNING CLEARANCE.
 - C) ALL INFORMATION IS SUBJECT TO CHANGE.

GENERAL INFORMATION:

- EACH LANDING ENTRANCE SHALL BE SUPPLIED AS A FINISHED ASSEMBLY WITH DOOR AND FRAME BLANKED, REINFORCED, DRILLED AND TAPPED FOR ALL COMPONENTS DETAILED, READY FOR INSTALLATION.
- FRAMES SHALL BE 16 GA, FULLY WELDED CONSTRUCTION WITH ALL WELDED JOINTS GROUNDED TO A SMOOTH, UNIFORM FINISH.
- DOORS SHALL BE 18 GA., 2" THICK, SWINGING, FLUSH, STEEL REINFORCED CONSTRUCTION COMPLETE WITH GLASS LITE(S) AS INDICATED.
- DOORS/FRAMES TO BE FABRICATED FROM ZINC WIFE COATED GALVANIZED STEEL WITH ZINC RICH PRIMER, FACTORY APPLIED TOUCH-UP AT THOSE AREA WHERE COATING HAS BEEN REMOVED DUE TO WELDING/GROUNDING.
- UL/ULC LABELLED ENTRANCES PROVIDED AS INDICATED 1 1/2 HOURS RATED.
- AUTO DOOR: OPERATOR IS PROVIDED & INSTALLED IN THE HEADER.



HORIZONTAL SECTION



First Level Door

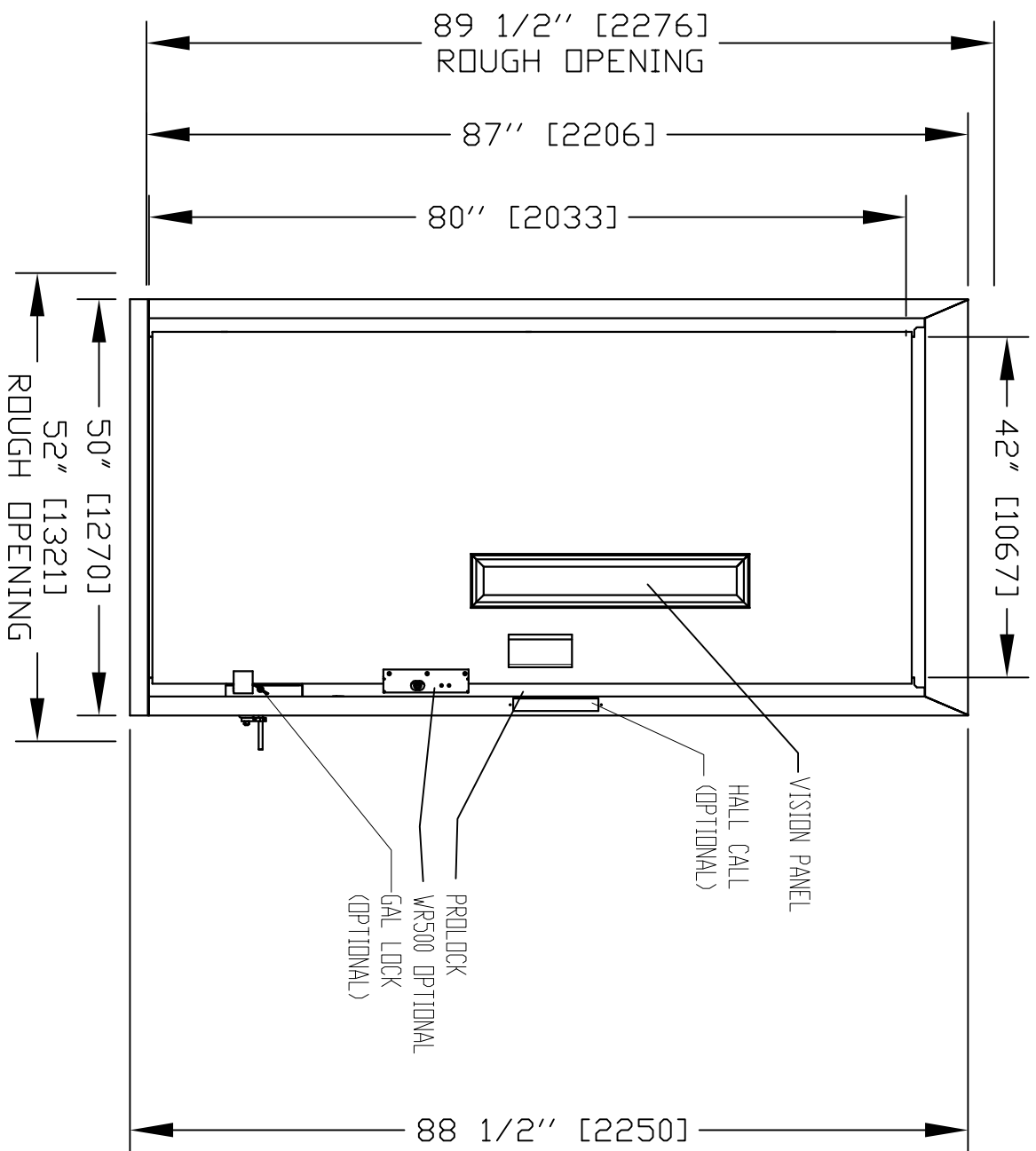
FIREPRO DOORS
ENCLOSED VERTICAL WHEELCHAIR PLATFORM LIFT

CUSTOMER: AMERICAN HOME ELEVATOR
PROJECT: N.O. STATE CITY

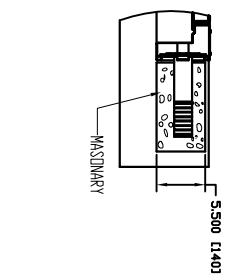
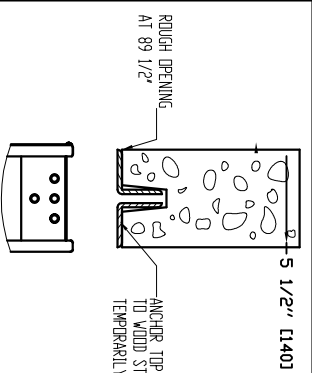
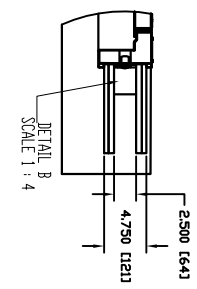
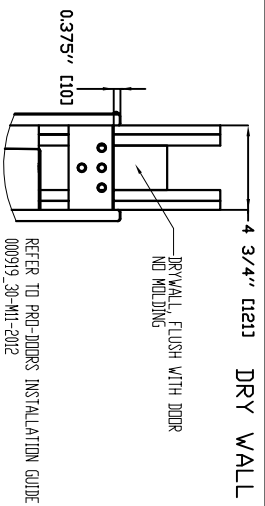
OFFICE USE ONLY:	Part No.
COMPARISON VERSION STAMP:	✓ - 1504
MODULE VERSION STAMP:	30027975
DATE:	11-16-17
REVISION DATE:	M/M/00/YY
COMPLETED BY:	DOMINIQUE

Job No. 219189
SHEET No. 3 OF 5





FRONT VIEW



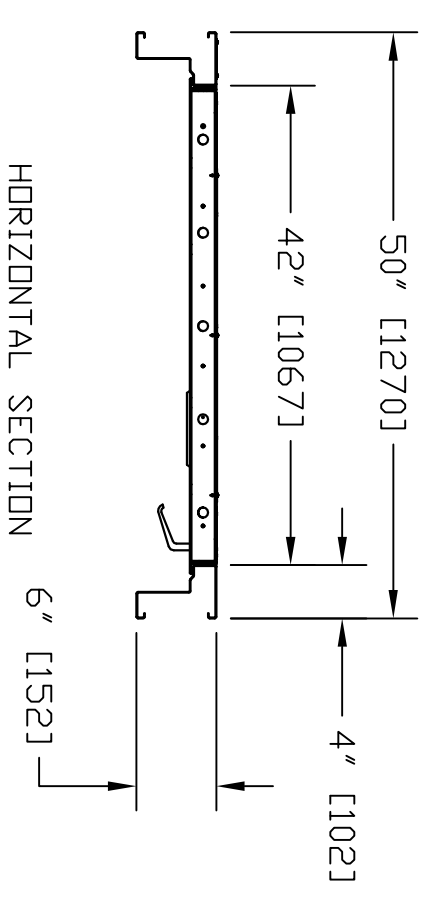
ANCHOR TO WALL
(WALL NOT SHOWN)

ALTERNATE MOUNTING

- NOTES:
- A) DRYWALL OR PARGING (BY OTHERS)AS REQ'D.
 - B) SEE DATASHEET OF THE INSTALLATION DRAWING FOR LANDING ENTRANCE SCHEDULE AND RUNNING CLEARANCE.
 - C) ALL INFORMATION IS SUBJECT TO CHANGE.

GENERAL INFORMATION:

- EACH LANDING ENTRANCE SHALL BE SUPPLIED AS A FINISHED ASSEMBLY WITH DOOR AND FRAME BLANKED, REINFORCED, DRILLED AND TAPPED FOR ALL COMPONENTS DETAILED, READY FOR INSTALLATION.
- FRAMES SHALL BE 16 GA, FULLY WELDED CONSTRUCTION WITH ALL WELDED JOINTS GRIND TO A SMOOTH, UNIFORM FINISH,
- DOORS SHALL BE 18 GA, 2" THICK, SWINGING, FLUSH, STEEL REINFORCED CONSTRUCTION COMPLETE WITH GLASS LITE(S) AS INDICATED.
- DOORS/FRAMES TO BE FABRICATED FROM ZINC WIPE COATED GALVANIZED STEEL WITH ZINC RICH PRIMER, FACTORY APPLIED TOUCH-UP AT THOSE AREA WHERE COATING HAS BEEN REMOVED DUE TO WELDING/GRINDING.
- UL/ULC LABELLED ENTRANCES PROVIDED AS INDICATED 1 1/2 HOURS RATED.
- AUTO DOOR: OPERATOR IS PROVIDED & INSTALLED IN THE HEADER.



HORIZONTAL SECTION

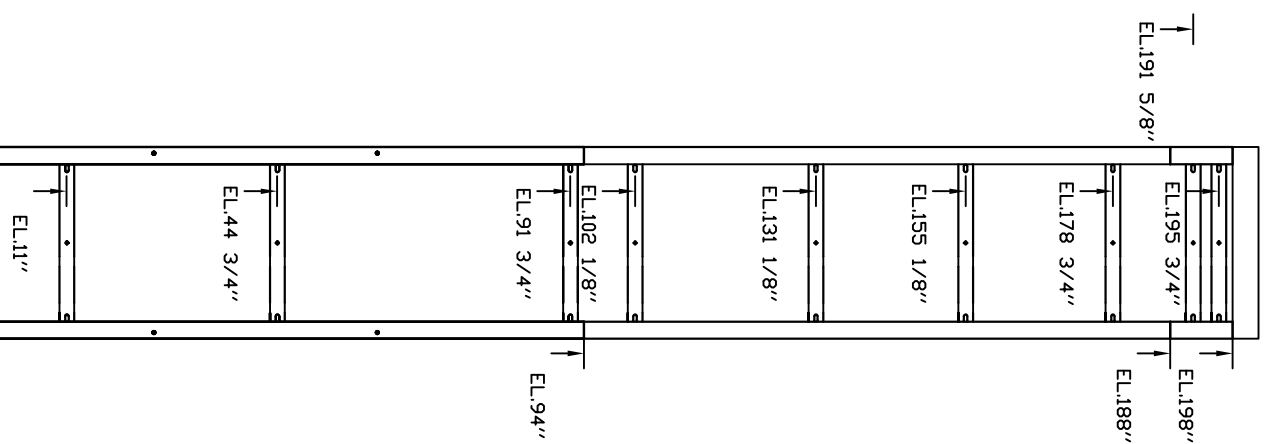
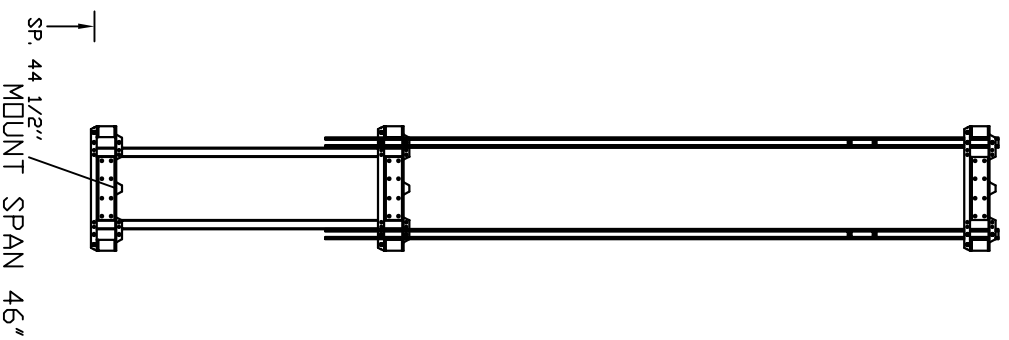
Second Level Door

FIREPRO DOORS
ENCLOSED VERTICAL WHEELCHAIR PLATFORM LIFT

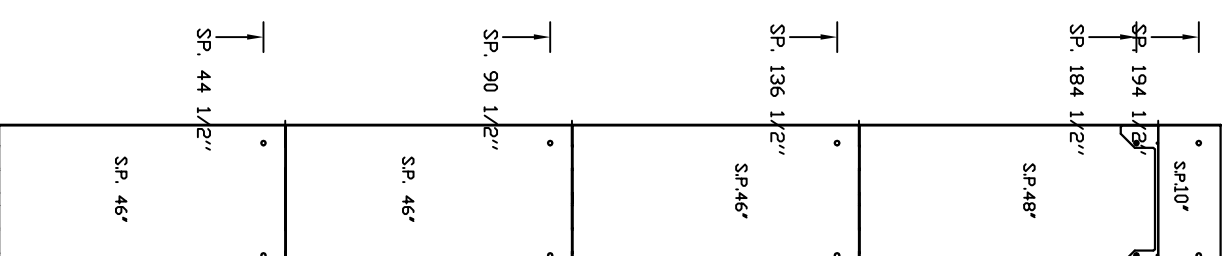
CUSTOMER: AMERICAN HOME ELEVATOR
PROJECT: NO. SETE, CITE

OFFICE USE ONLY:	Part No.
CONFIGURATION VERSION STAMP: 0.1	✓ -1504
MODULE VERSION STAMP: P5752	Version No. 30027975
DATE: 11-16-17	
REVISION DATE: 11/16/17	
COMPLETED BY: DOMINIQUE	

savarida
JOB No. 219189 | SHEET No. 4 OF 5



EL: MOUNTING BRACKET POSITION



SP: SERVICE PANEL

LOADS CALCULATED ON BASED ON ANCHOR POINTS EVERY 48\"/>

ELEVATION VIEWS

ENCLOSED VERTICAL WHEELCHAIR PLATFORM LIFT

OFFICE USE ONLY:	
CONFIGURATION VERSION STAMP:	0.1
MODULE VERSION STAMP:	13-7512

Part No.	V-1504
Variant No.	30027975

CUSTOMER: AMERICAN HOME ELEVATOR

PROJECT:

ADDRESS: No. Steeple, Citey

REVISION DATE: 11-16-17

DATE: 13-7512

COMPLETED BY: DOMINIQUE

Job No. 219189

SHEET No. 5 of 5