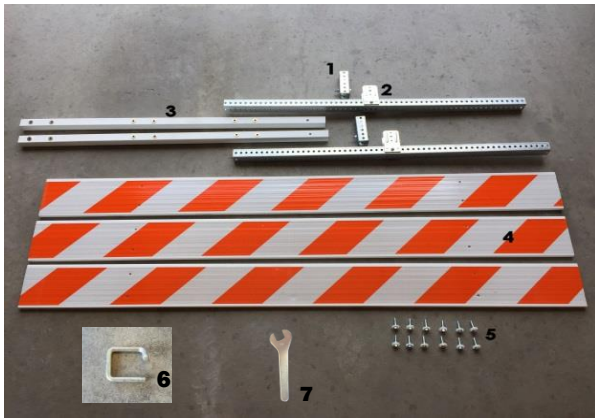




Thank you for purchasing the Dobie BARRICADE IN-A-BOX™. Here are your easy to follow assembly instructions.



**PARTS INCLUDED:**

- 1.) 6" Square Tube with Bolt and Nut (2)
- 2.) Barricade Feet with Bracket (2)
- 3.) Barricade Uprights (2)
- 4.) Barricade Panels (3)
- 5.) Barricade Bolt (12) and Plastic Washers (12)
- 6.) Gravity Pin (2)
- 7.) Wrench/Assembly Tool

**ASSEMBLY DETAILS:**

**STEP 1:**

- Insert the 6" metal perforated square tube between the two brackets on the barricade foot.
- The bottom hole of the 6" square tube should align with the lower dimple on the brackets.



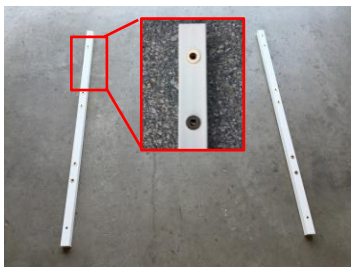
**STEP 2:**

- Use the supplied bolt and nut to secure the square tube.
- Tighten bolts securely.
- Repeat process for the other foot and set aside once complete.



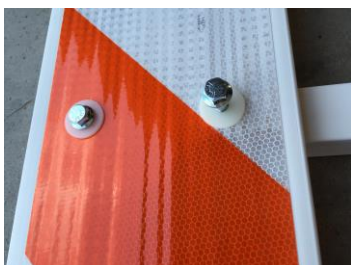
**STEP 3:**

- Set barricade uprights approximately 60" apart with nut inserts facing up. (Bottom of upright has a hole without a metal insert.)



**STEP 4:**

- Lay the 3 panels on top of the uprights, aligning panel striping as shown on the next picture.
- Align the panel holes to match the metal nut inserts in the uprights.
- The top of the panel should be near the top of the upright.
- The upright will extend approx. 12" below the bottom panel.





**STEP 5:**

- Insert each of the 12 flange bolts with plastic washer through the pre-drilled holes in the panel and into the nut on the upright.
- Once all 12 bolts are inserted, hand tight each bolt until snug.
- Once all 12 bolts are snug, tighten ½ rotation.

**CAUTION:** Over tightening may crush the panel.



**STEP 6:**

- Pick up assembled barricade and place each upright legs into metal foot.
- Each metal foot should face perpendicular to the panel as shown.



**STEP 7:**

- Insert Gravity Pin through each barricade foot at top of 6" Square Tube.



- Lock Gravity Pin into place.

**WARRANTY AND DISCLAIMER**

**Disclaimer.** DOBIE SUPPLY, LLC. DOES NOT WARRANT THE USE OF BARRICADE-IN-A-BOX™ FOR ANY PARTICULAR USE OR FUNCTION AND IS NOT RESPONSIBLE FOR THE PROPER DEPLOYMENT OF THIS DEVICE. THE USER IS EXPECTED TO KNOW AND COMPLY WITH ANY APPLICABLE LEGAL REQUIREMENTS FOR USE OF BARRICADES ON OR NEAR PUBLIC OR PRIVATE ROADWAYS. BARRICADE-IN-A-BOX™ IS A LIGHT WEIGHT BARRICADE AND IS NOT DESIGNED TO STOP OR CUSHION THE BLOW FROM AUTOMOBILES OR OTHER HEAVY OBJECTS. SANDBAGS SHOULD BE USED FOR BALLASTING IF THE BARRICADE IS TO BE USED IN WINDY AREAS.

**Exclusion of all Other Warranties.** THIS WARRANTY IS IN LIEU OF ALL OTHER WARRANTIES, WHETHER EXPRESS, IMPLIED, OR STATUTORY, INCLUDING ANY WARRANTIES OF MERCHANTABILITY OR FITNESS FOR A PARTICULAR PURPOSE, and all other obligations or liabilities including special or consequential damages or contingent liabilities arising out of the failure of any product or part to operate properly. DOBIE shall not be liable for any special, indirect, incidental or consequential damages whether in contract, tort, under any warranty or otherwise, beyond the warranty quoted herein for products or parts.

**Congratulations!** You have assembled your Dobie BARRICADE IN-A-BOX™. For other products, visit [www.DobieSupply.com](http://www.DobieSupply.com)



For Questions or Comments: 512.437.6499 | [info@dobiesupply.com](mailto:info@dobiesupply.com)

