

*Slow* SMOKED *Texas* BAR-B-Q

**STUBB'S**  
**BAR-B-Q**

*Cold* BEER *Live* MUSIC

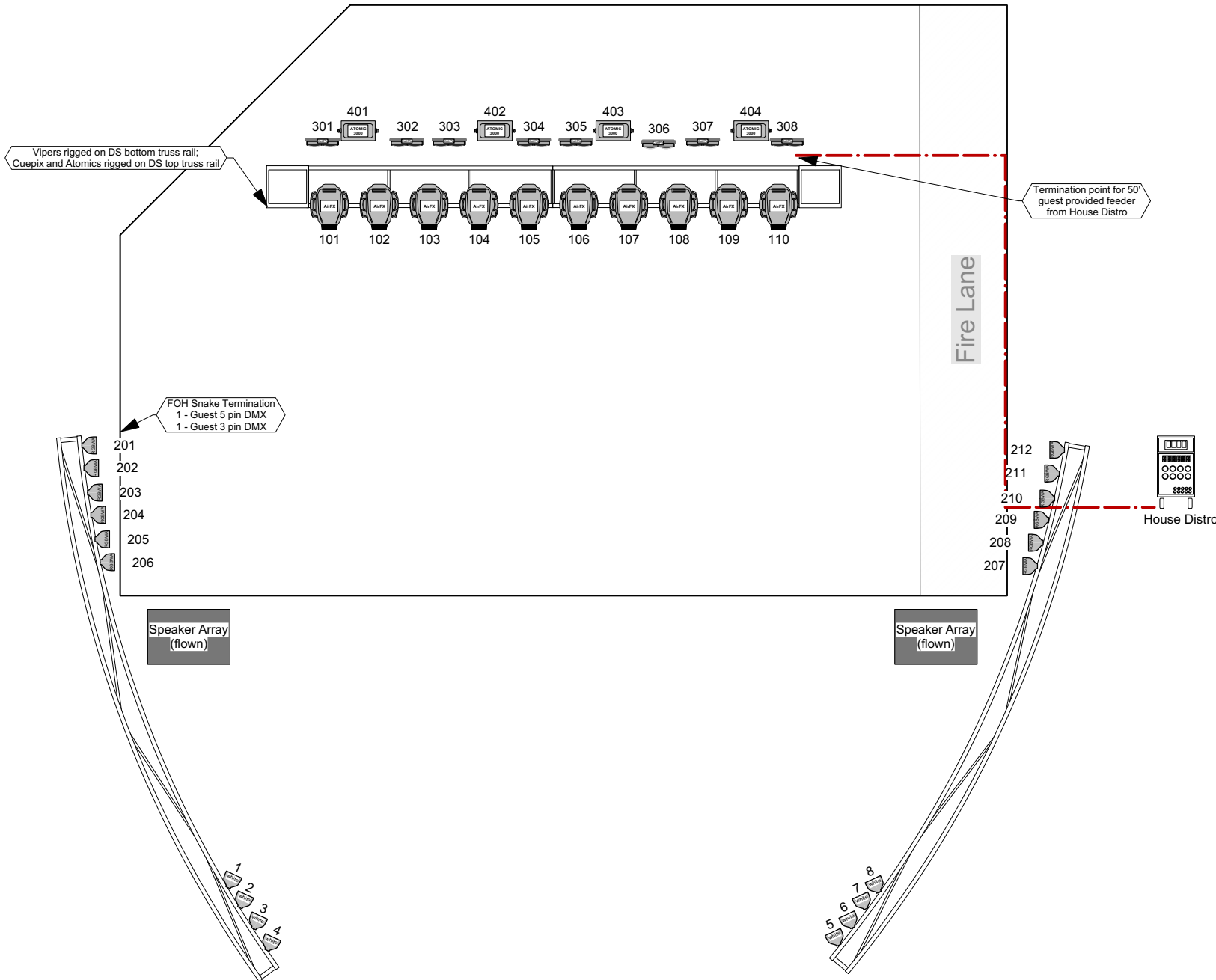
**TECH PACK**

Slow SMOKED Texas BAR-B-Q

# STUBB'S BAR-B-Q

Cold BEER Live MUSIC

<b>Stage:</b>	<b>40ft x 32ft x 3.5ft.</b> Actual performance is <b>36ft x 24ft.</b> See attached stage dimensions.
<b>Parking:</b>	Bagged street meters behind the stage and in front of the venue.
<b>Power:</b>	100 amps 3 phase cam lock for sound 200 amps 3 phase cam lock for lighting (shares stage lighting) <b>NO</b> bus shore power
<b>Roof:</b>	Saddles span roof with a 24.5ft trim height to the peak.
<b>Rigging:</b>	The Saddle Span roof is not capable of any load bearing beyond the house lighting.
<b>Lighting:</b>	See attached lighting plot.
<b>Audio:</b>	PA is provided by the Big House Sound at: <b>512-443-0019</b> , but please advance audio with Stubb's PM first.
<b>FOH:</b>	The mix position is 65ft from the downstage edge. There is a permanent and level front of house riser.
<b>Backdrop:</b>	13ft x 25ft black scrim.
<b>Barricade:</b>	All Access barrier provided by Longcat Lighting for an additional expense.
<b>Backline:</b>	Provided by Soundcheck Austin at: <b>512-444-0023</b> . Please discuss with Stubb's PM
<b>Sound Curfew:</b>	10:30pm – Sunday, Monday, Tuesday, and Wednesday 11:00pm – Thursday 12:00am – Friday and Saturday
<b>DB Limit:</b>	85db A weighted at the property line <b>or</b> 100db A weighted at the FOH console.
<b>Artist Production Office:</b>	Located inside the artist dressing room area. 1 phone line is available: <b>512-480-8341</b> , EXT: <b>319</b> .
<b>Dressing Rooms:</b>	There is 1: <b>28ft x 14ft</b> dressing room located house left, with a secure walking path from the stage. No showers/1 port-a-can.
<b>Internet:</b>	Wireless LAN-Password: RockNR011
<b>Catering:</b>	Stubb's BBQ ...Please advance meal numbers with PM. Menu at: <a href="http://www.stubbsaustin.com/restaurant.php">www.stubbsaustin.com/restaurant.php</a>
<b>Merchandise:</b>	Merchandise position is located near the front door. Please advance seller if needed with PM.



INSTRUMENT SCHEDULE			
Symbol	Qty	Description	Mode/DMX
	8	Elation ELAR 180 Par WW	2 ch.
	10	Martin Mac Viper AirFX	Extended 28ch.
	12	Elation ELAR 180 Par RGBWA	5 ch.
	8	Elation CuePix Blinder WW2	4ch.
	4	Martin Atomic 3000	FX 4ch.

**Production and Tech Notes**

- US House Rig weighs 1,500lbs. Max guest available hang weight =1,000lbs.
- House Distro is on a 200amp 3-phase disconnect. House rig draws 80amps/leg. Max guest available power = 120amp/leg.
- 50' guest Feeder needed from House Distro along fire lane to USL truss upright. Cam pass-through from distro is all same sex; female outs.
- 2 - 208v and 2 - 120v multipin Soca outs available from House Distro.
- 2-120v/20amp circuits available at FOH
- Lighting Data Snake terminates MSR. House is on 3 universes. 1-5 pin & 1-3 pin DMX available for guest.
- House Lights are ColorBlast12 located in the trees surrounding venue. DMX controlled in Universe 3 at FOH. Please leave house lights on before, between, and after sets.
- FOH Console is a High End Full Boar 3 w/ Hog Mini Wing. Software version 3.2.6
- House Hazer is a CIRC Starhazer II; located MSR w/fan. No DMX control.
- DS focus happens early in the day. Pardon the Texas sun.
- This is a "house of many centers"; lighting, audio, and roof are all slightly off from each other (within 3'). FOH is off center to SR.
- Enjoy the BBQ! We do.



Stubbs - House Lighting Plot 2016

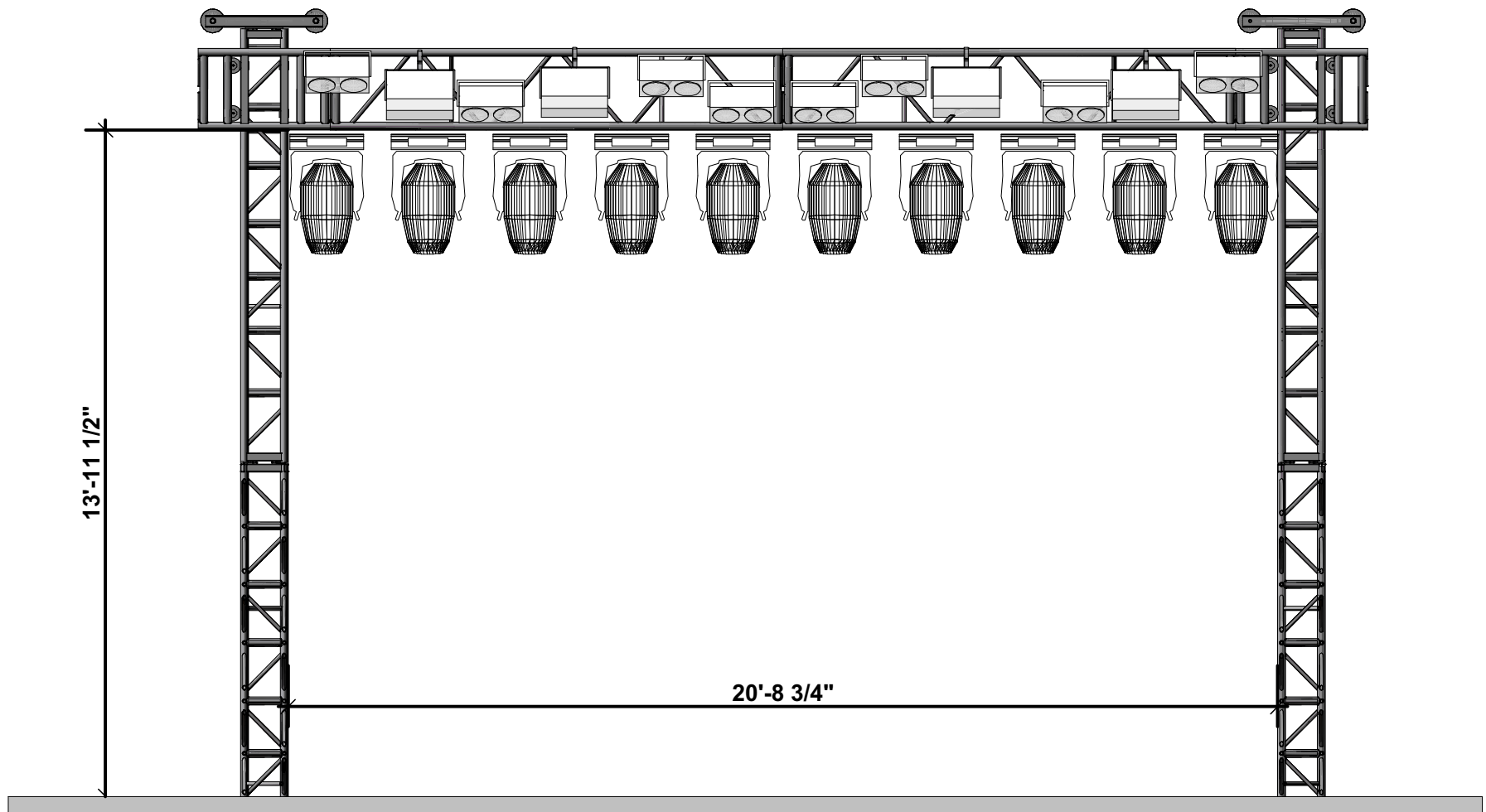
Stubbs Waller Creek Amphitheater  
801 Red River Street  
Austin, Texas, USA 78701

ILIOS Lighting Design LLC  
Commercial Center Drive Ste 650  
Austin, TX, USA 78744  
Office: (512) 440-7045 info@ilioslighting.com  
pm@ilioslighting.com

Notice / Disclaimer  
All information represented in this diagram is the sole intellectual property of ILIOS Lighting Design. Any reproductions, variants, or interpretations of this plot must be directly approved through ILIOS Lighting Design or through the designer.  
Rigging and/or Electrical is subject to change depending on building infrastructure or by the onsite safety inspector.

Project Manager	Project ID
ILIOS Lighting	
Drawn By	Sheet Number
Tony Schweinberg	1
Drawn On Date	Sheet Notes
12.14.15	
CAD File Name	
Stubbs_2016_Plot.vwx	

Send System Inquiries To  
pm@ilioslighting.com



**STUBB'S**  
**BAR-B-Q**

Stubbs - House Lighting Plot  
2016

Stubbs Waller Creek Amphitheater  
801 Red River Street  
Austin, Texas, USA 78701

ILIOS Lighting Design LLC  
Commercial Center Drive Ste 650  
Austin, TX, USA 78744  
Office: (512) 440-7045 info@ilioslighting.com  
pm@ilioslighting.com

Notice / Disclaimer:  
All information represented in this diagram is the sole intellectual property of ILIOS Lighting Design. Any reproductions, variants, or interpretations of this plot must be directly approved through ILIOS Lighting Design or through the designer.  
Rigging and/or Electrical is subject to change depending on building infrastructure or by the onsite safety inspector.

Project Manager	ILIOS Lighting	Project ID
Drawn By	Tony Schweinberg	Sheet Number
Drawn On Date	12.14.15	2 / 2
CAD File Name	Stubbs_2016_Front View.vwx	Send System Inquiries To pm@ilioslighting.com



PRESENTS



# STUBB'S BAR-B-Q

## Stubbs 2016 Patch and Notes

Fix.#	Position	Notes	Mode	Univ.Addr
<b>Elation ELAR 180 LED Par WW</b>				
1	DS	House "specials". 2 channel Warm White LED fixtures. Not commonly found in Libraries. First channel is Dimmer; Second channel is Shutter Parking shutter channels at 100% will ensure they stay "open" Patch as individual generic dimmers if no 2 channel LED is in library Focus from large ladder happens early in the day.	2ch.	2.001
2	DS		2ch.	2.003
3	DS		2ch.	2.005
4	DS		2ch.	2.007
5	DS		2ch.	2.009
6	DS		2ch.	2.011
7	DS		2ch.	2.013
8	DS		2ch.	2.015
<b>Elation ELAR 180 LED Par RGBWA</b>				
201	MSR	Color side wash. 5 channel RGBWA LED fixtures. Not commonly found in Libraries. Use generic 5 channel RGBWA LED if not in library	5ch.	2.017
202	MSR		5ch.	2.022
203	MSR		5ch.	2.027
204	MSR		5ch.	2.032
205	MSR		5ch.	2.037
206	MSR		5ch.	2.042
207	MSL		5ch.	2.047
208	MSL		5ch.	2.052
209	MSL		5ch.	2.057
210	MSL		5ch.	2.062
211	MSL		5ch.	2.067
212	MSL		5ch.	2.072
<b>Martin Mac Viper AirFX</b>				
101	USR		Ext. (28ch.)	1.001
102			Ext. (28ch.)	1.029
103			Ext. (28ch.)	1.057
104			Ext. (28ch.)	1.085
105			Ext. (28ch.)	1.113
106			Ext. (28ch.)	1.141
107			Ext. (28ch.)	1.169
108			Ext. (28ch.)	1.197
109			Ext. (28ch.)	1.225
110	USL		Ext. (28ch.)	1.253
<b>Martin Atomic 3000 Strobe</b>				
401	USR		FX (4ch.)	1.281
402			FX (4ch.)	1.285
403			FX (4ch.)	1.289
404	USL		FX (4ch.)	1.293
<b>Elation CuePix Blinder WW2</b>				
301	USR	4 channel mode 1= LED 1; 2= LED 2; 3= Shutter Channel; 4= Dimming Curve Can be put into simple 1 channel mode by request. Please make request by email to pm@ilioslighting.com	4ch.	1.297
302			4ch.	1.301
303			4ch.	1.305
304			4ch.	1.309
305			4ch.	1.313
306			4ch.	1.317
307			4ch.	1.321
308	USL		4ch.	1.325
<b>ColorBlast 12 - RGB</b>				
501 thru 525	Trees	House Lights. RGB LED in surrounding trees.	3ch. RGB	3.001   thru 3.073

***A house Starhazer II is available for atmosphere. No DMX control.***

***There is 1- 5pin & 1- 3pin DMX universe available in the lighting snake for guest use.***

Slow SMOKED Texas BAR-B-Q

# STUBB'S BAR-B-Q

Cold BEER Live MUSIC

## FRONT OF HOUSE

- 1 . . . . .DigiDesign Venue SC48 Digital Disk
- 1 . . . . . Lake LM44
- 1 . . . . . CD/DVD Player DN-V210
- 1 . . . . . Production Intercom Power Supply

## MAIN SPEAKERS

- 8 . . . . . Flown Arrays d&b J8's
- 6 . . . . . d&b B2's Sub Speaker
- 1 . . . . . Rack of d&b D12's

## FILL SPEAKERS

- 4 . . . . . d&b Q's
- 1 . . . . . d&b D12 Amp

## MONITOR SYSTEM

- 1 . . . . . DigiDesign Venue SC48 Digital Desk
- 10 Adamson 12MXi Monitor Speaker Wedge
- 1 . . . . . Adamson SX 2x18"
- 2 . . . . . Rack of Crown Macro 24x6 amps with PIP card x-over (8 mixes)

## SIDE FILLS - (if requested)

- 2 . . . . . Adamson SX18 Speakers
- 2 . . . . . Adamson SX18 Sub Speakers
- 1 . . . . . Rack of Crown Macro-Tech Power Amps



**FRONT VIEW OF STAGE**



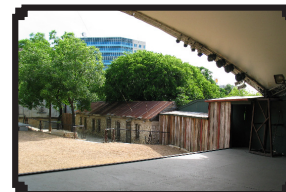
**DRESSING ROOM**



**STAGE RIGHT VIEW**



**CENTER STAGE VIEW**



**STAGE LEFT VIEW**



**MERCH**



**REAR LOAD IN DOOR**



**STORAGE**



**MERCH DISPLAY AREA**



**LOAD-IN RAMP**



**HALLWAY TO STAGE**



**HALLWAY TO STAGE**

**FOR QUESTIONS OR CONCERNS:**  
Please contact Stubb's production manager,  
John Mickan at: [jmickan@c3presents.com](mailto:jmickan@c3presents.com)

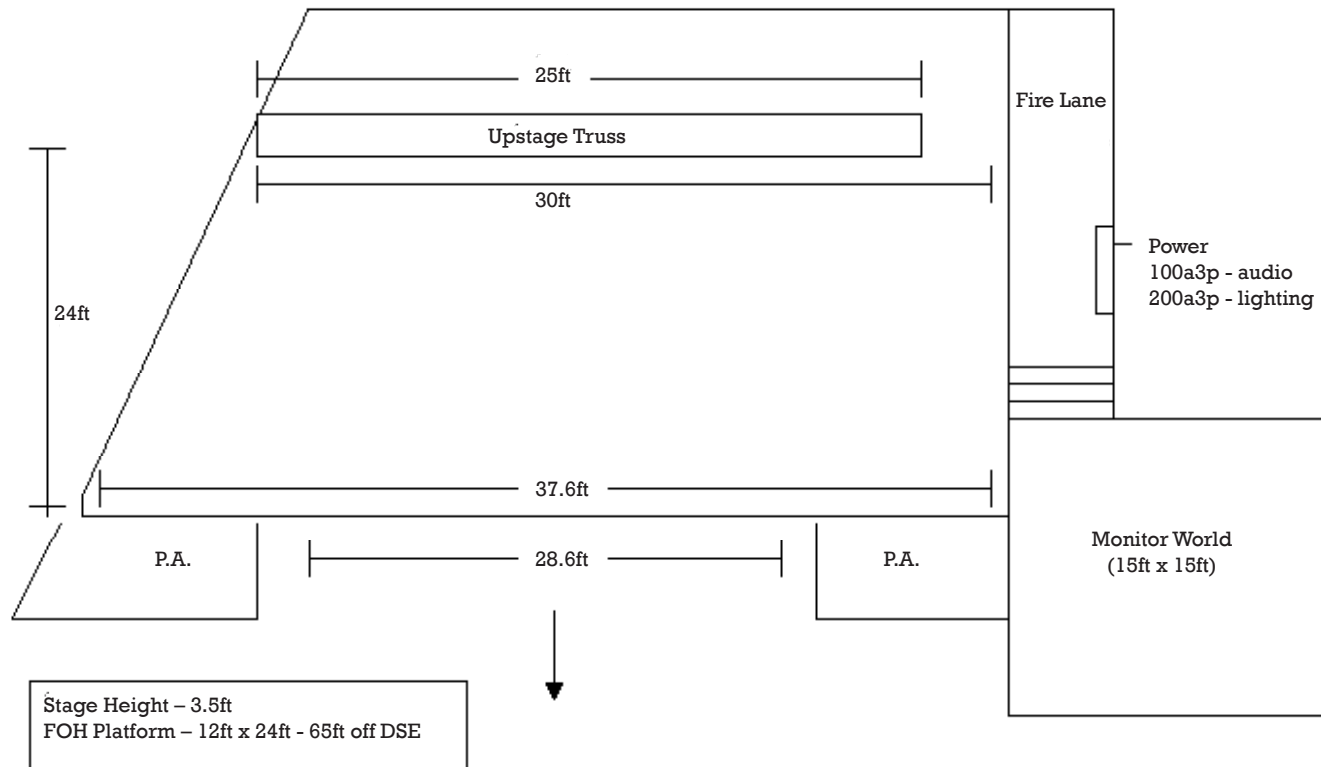
PA provided by:  
**BIG HOUSE SOUND**  
4001 DROSSET  
AUSTIN, TEXAS 78744  
OFFICE: (512)443.0019  
FAX: (512)443.0916

Slow SMOKED Texas BAR-B-Q

# STUBB'S BAR-B-Q

Cold BEER Live MUSIC

## STAGE DIMENSIONS



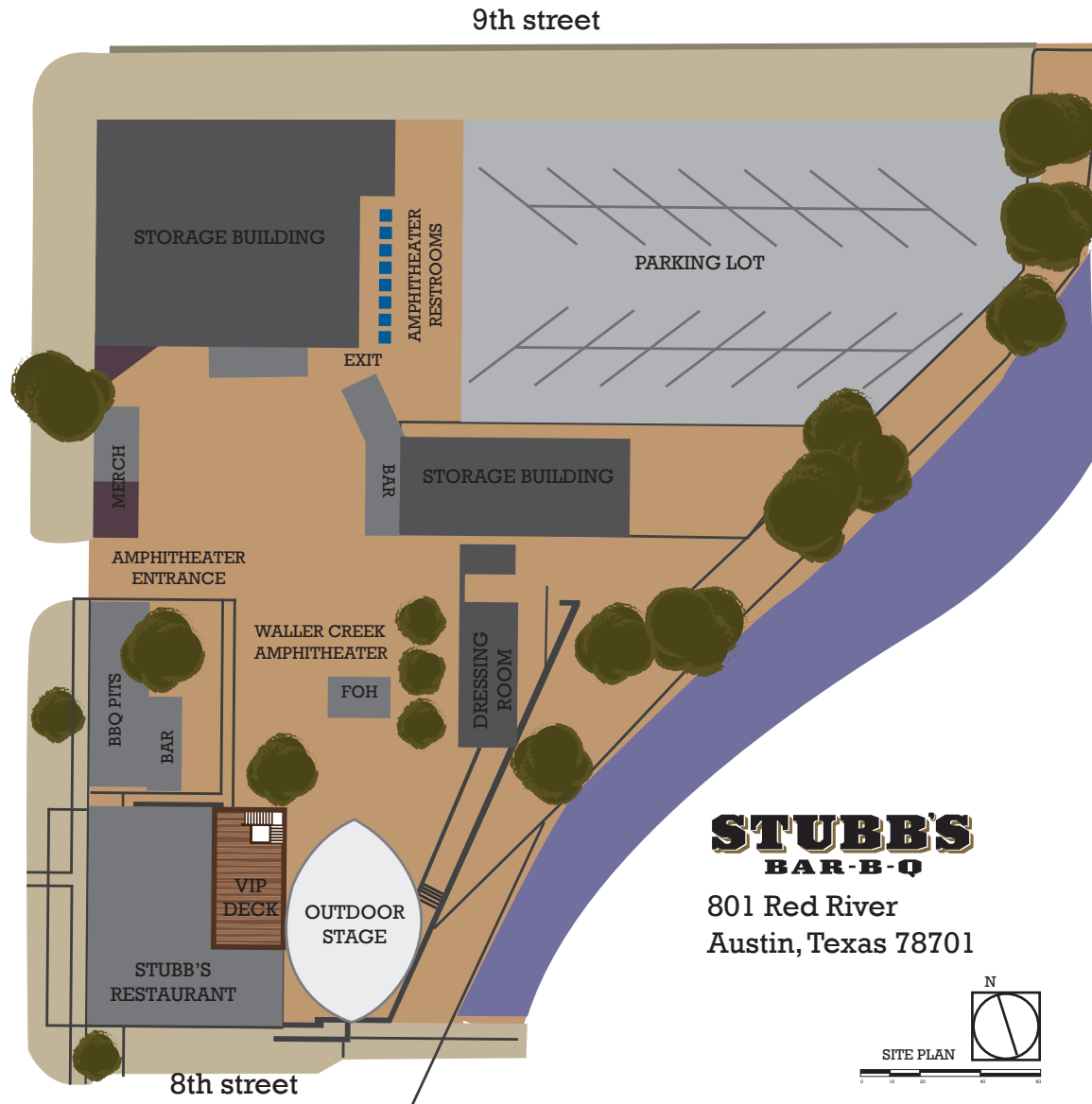


Slow SMOKED Texas BAR-B-Q

# STUBB'S BAR-B-Q

Cold BEER Live MUSIC

## SITE PLAN

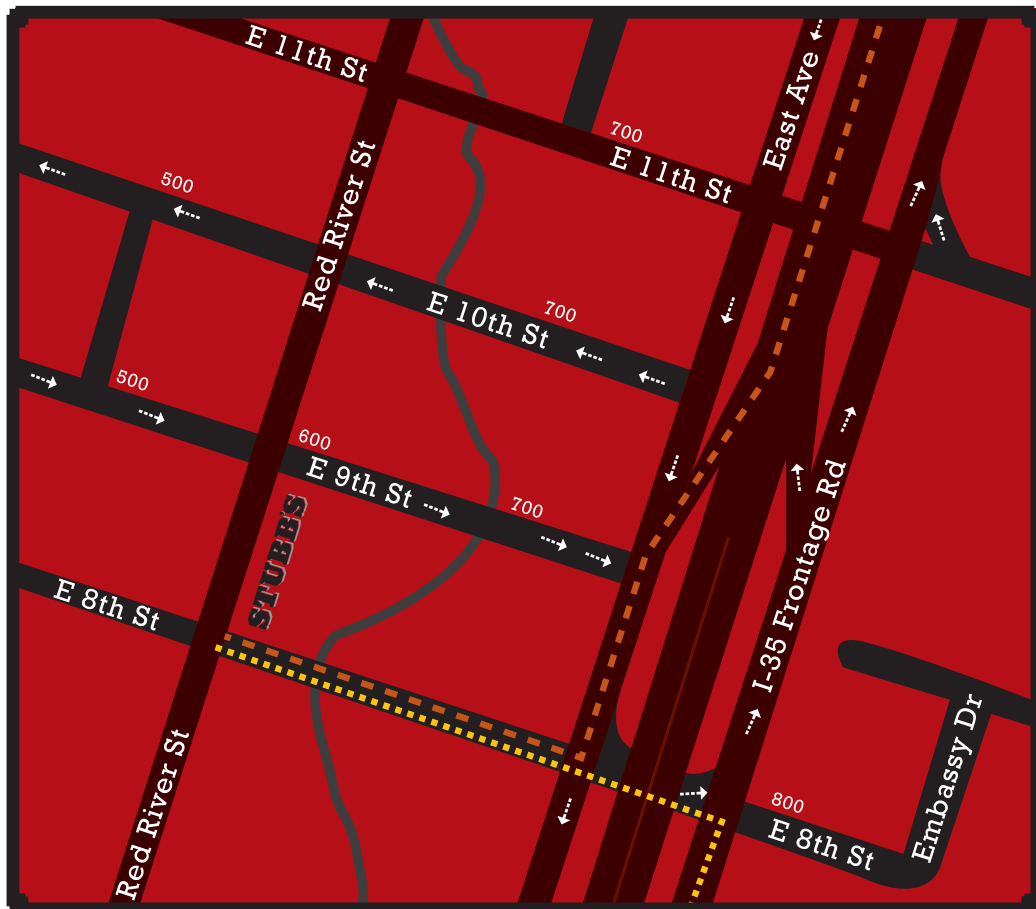


Slow SMOKED Texas BAR-B-Q

# STUBB'S BAR-B-Q

Cold BEER Live MUSIC

## DIRECTIONS AND PARKING



### FROM THE SOUTH:

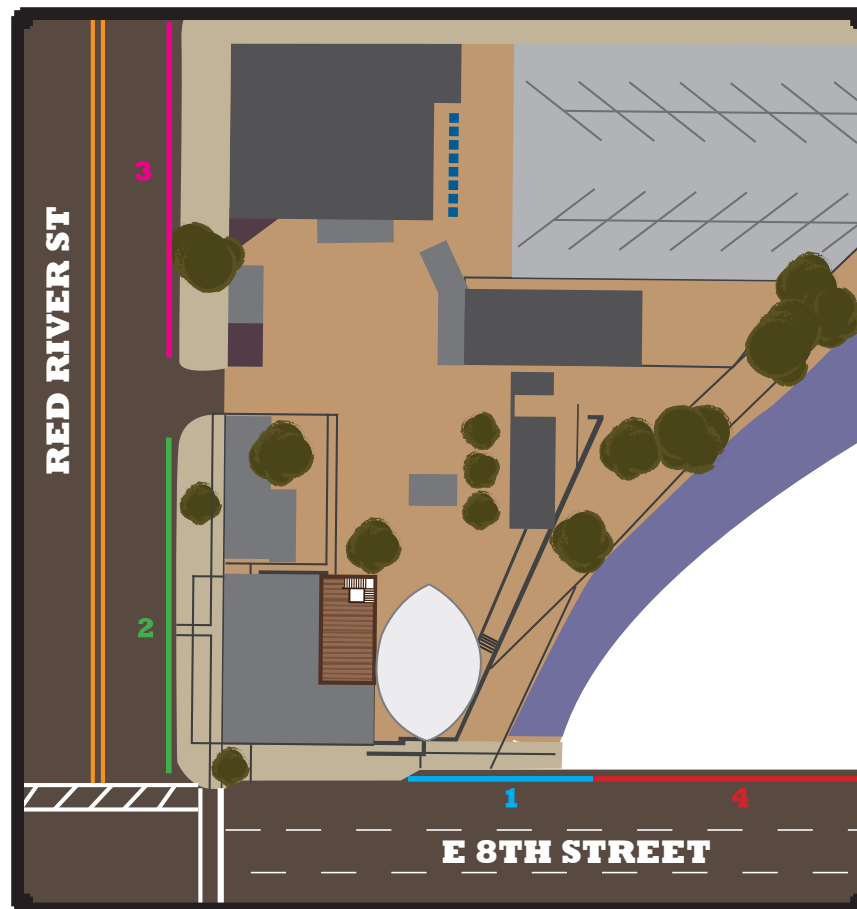
Take I-35 North to Exit 234C, turn Left onto 8th street.

Venue will be on the right at the corner of 8th and Red River.

### FROM THE NORTH:

Take I-35 South to Exit 234B, turn right onto 8th street.

Venue will be on the right at the corner of 8th and Red River.



**1.** Ideal parking for semi and/or headliner buses and easiest access to dressing rooms and backstage loading.

**3.** (Must be requested) Overflow parking, ideal for 2nd semi or additional band vehicles.

**2.** Additional parking for opening band vehicles, trailers, or crew buses.

**4. POLICE PARKING ONLY.** Please do not park in the area marked for police vehicles.