



MOBILE CREW CAMP

PUT YOUR WORKFORCE ON CREWS CONTROL

Cotton Logistics provides worldwide operational support and infrastructure for the shortages of workforce housing, catering and other resources associated with a catastrophic event, a large construction or development project, and for the complex and ever-changing work environments of the oil and gas industry. Backed by the expansive capabilities and assets of the Cotton brand of companies under Cotton Holdings, the Cotton Logistics team can deliver under the most challenging of scenarios. Whether the task involves a remote geographic region, extreme climate, stringent timeline, or other unique problem set, Cotton Logistics pairs subject matter expertise with innovation and flexibility to determine the best possible solution that satisfies each clients' specific requirements.

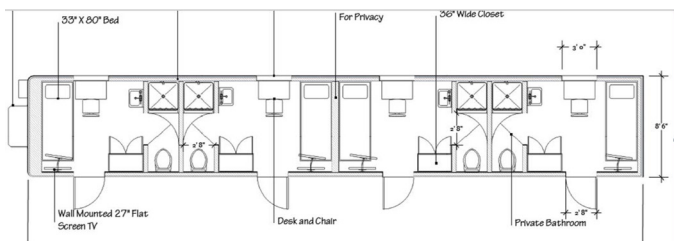
FEATURES

- VIP AND JACK N' JILL STYLE ROOMS
- 24-HR FOOD SERVICE
- RECREATION ROOM W/ BILLIARDS
- FITNESS CENTER
- INTERNET CAFE
- WIRELESS INTERNET
- SELF SERVE LAUNDRY FACILITY
- HOUSEKEEPING
- CONTROLLED ACCESS CARD ENTRY
- SELF-CONTAINED WATER
- POWER DISTRIBUTION
- INSULATIONS: R40 (CEILING) R30 (WALLS) R40 (FLOORS)

4 UNIT VIP CABIN



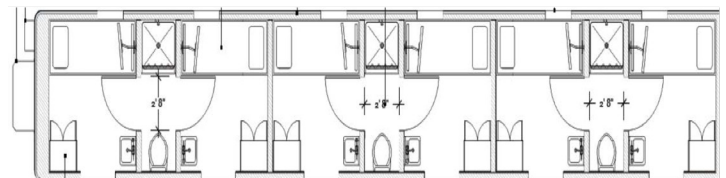
- 4 SINGLE OCCUPANCY CABINS
- 70 SQ. FT. PER CABIN
- TWIN BED 33 X 80 (EXTRA LONG)
- PILLOW TOP MATTRESS
- HIGH QUALITY LINENS
- RED OAK ARMOIRE AND DESK
- UNDER BED DRAWERS
- PRIVATE BATHROOM W/ SHOWER
- 29" FLAT SCREEN TV WITH DVD
- INDIVIDUAL TEMPERATURE CONTROL
- INSULATED STEEL DOORS, PRIVATE ENTRANCE
- KEYLESS ENTRY
- FREE WIFI
- INSULATIONS: R40 (CEILING) R30 (WALLS) R40 (FLOORS)



6 UNIT CRAFT WORKER CABIN



- 6 SINGLE OCCUPANCY CABINS
- 50 SQ. FT. PER CABIN
- TWIN BED 33 X 80 (EXTRA LONG)
- PILLOW TOP MATTRESS
- HIGH QUALITY LINENS
- RED OAK ARMOIRE AND DESK
- UNDER BED DRAWERS
- WALL MOUNTED SINK
- SHARED SHOWER AND TOILET
- 29" FLAT SCREEN TV WITH DVD
- INDIVIDUAL TEMPERATURE CONTROL
- INSULATED STEEL DOORS, PRIVATE ENTRANCE
- KEYLESS ENTRY
- FREE WIFI
- INSULATIONS: R40 (CEILING) R30 (WALLS) R40 (FLOORS)





BUSINESS CENTER

- 2 – 8'X8' OFFICES
- FILING CABINETS
- COPIER AND FAX MACHINE
- HARDWIRED CAT 5 PORTS
- 8 PERSONNEL WORK STATIONS WITH DESK TOP COMPUTERS
- RESTROOM
- GALLEY AREA,
- 1.2 METER SATELLITE DISH
- MECHANICAL CLOSET FOR COMMUNICATION RACK



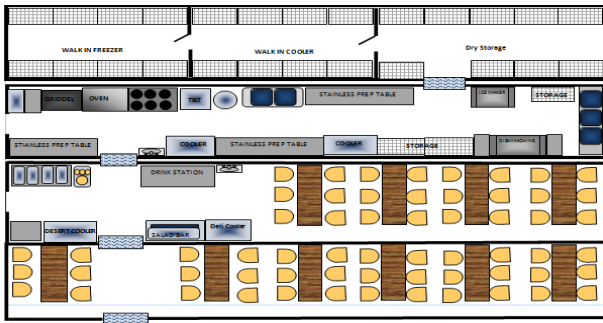
RECREATION AND LAUNDRY

- 8 COMMERCIAL DOUBLE STACK WASHER / DRYER UNITS
- AUTOMATIC SOAP DISPENSERS
- FOLDING TABLES
- FITNESS EQUIPMENT
- GAMING TABLES
- FLAT SCREEN TVS



KITCHEN AND DINING CENTER

- STATE OF THE ART COOKING EQUIPMENT
- PRODUCTION LEVELS UP TO 200 MEALS BREAKFAST, LUNCH AND DINNER
- AUTOMATED DISHWASHING SYSTEMS
- HOOD SYSTEM WITH ANSEL FIRE SUPPRESSION
- COMBINATION FREEZER, REFRIGERATION DRY STORAGE UNIT
- DINING HALLS WITH FLEXIBLE CAPACITY
- HOT FOOD STATION
- 24 HOUR SANDWICH BAR
- SALAD BAR
- REACH IN COOLERS FOR SELF SERVE DRINKS AND SNACKS
- SOFT SERVE ICE CREAM
- 40 " FLAT SCREEN TVS



ONLEODGE

