



TRIAD ORBIT – STARBIRD SB-1 FACT SHEET

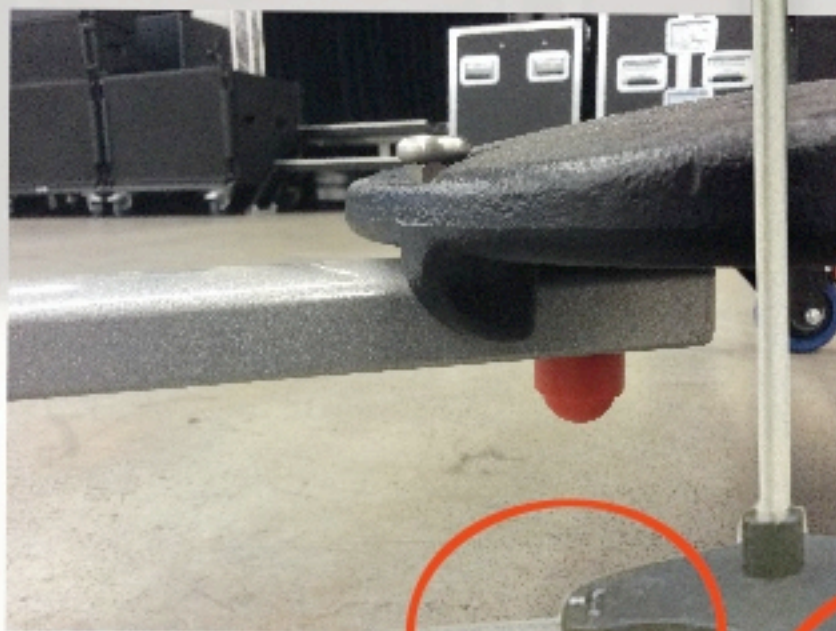
Use this fact sheet to get familiar with the Starbird SB-1 — be sure to read the enclosed Assembly/Functionality Pages for precautionary information and details.
Questions? Call us. We're here to serve you.

TRIAD ORBIT – THE STARBIRD SB-1 STUDIO BOOM STAND

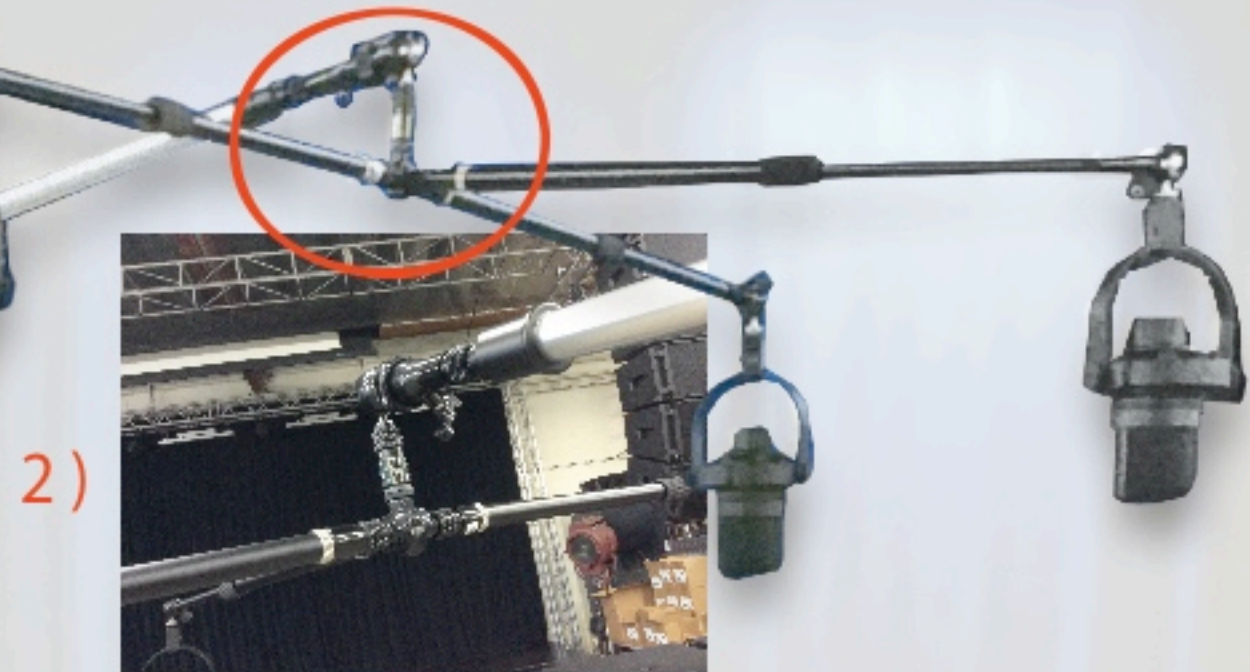
An updated version of George Starbird's legendary Model No. 180 Studio Boom Stand — the SB-1 combines unrivaled reach, range of motion and stability with Triad Orbit's proprietary technology to impart new levels of performance and versatility. (See opposite side for Decca Tree quick start assembly guide.)



4)



5)



2)

- 1) - The SB-1 Swivel can be secured in any of 9 positions using the Boomstop™ Safety Lock — a spring pin locking mechanism — and working with the boom swivel's main knob.
- 2) - The IO Vector Stereo Utility Bar is the mounting hub that connects the Boom to the Decca Tree or to a microphone, via additional T-O couplers, and/or retro-couplers.
- 3) - The Counterweight weighs 5kg/11lb. The end cap can screw off to allow for an accessory, or a weight bag, to be inserted into the cavity.
- 4) - The T.A.F. System is a patent-pending pneumatic system that automatically raises Triad-Orbit Starbird Stands and Booms. A small black pouch is used as a precautionary cap to prevent the stand from rising during travel and assembly. **BE CERTAIN TO READ THE ENCLOSED INSTRUCTIONS ON HOW TO SAFELY RAISE AND LOWER THE BOOM MECHANISM.**
- 5) - Retractable legs pivot for optimum positioning and to tuck away under the base for efficient storage. **READ THE ENCLOSED INSTRUCTIONS CAREFULLY BEFORE RETRACTING OR EXPANDING THE LEGS — (ie, DO NOT TRY TO MOVE A LEG ALL THE WAY AT ONCE).**

