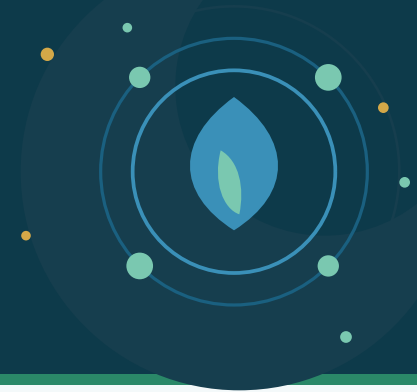


# Magic Mouthwash

Custom-compounded oral rinse for mouth pain, sores, and inflammation.



✓ CUSTOM FORMULA · SWISH · SPIT · OR · SWALLOW · RX-PRESCRIBED

When the inside of your mouth hurts — from chemotherapy mucositis, radiation, canker sores, post-surgical pain, or inflammation — it affects everything: eating, drinking, sleeping, talking. Magic Mouthwash is a **custom-compounded oral rinse** that combines multiple active ingredients in a single preparation, targeting pain, inflammation, and infection at the same time — mixed to your physician's specification.

## What Magic Mouthwash Treats

### Chemo & Radiation Mucositis

Cancer treatment frequently causes painful oral sores. Magic Mouthwash provides multi-ingredient relief that single-agent rinses can't match.

### Aphthous Ulcers & Canker Sores

Recurrent or stubborn canker sores that don't respond to OTC remedies. The combination approach speeds healing and provides immediate pain relief.

### Post-Surgical & Dental Pain & Inflammation

After dental procedures, oral surgery, or extractions — reduces pain and inflammation while supporting healing of the surgical site.

## Common Magic Mouthwash Ingredients

There is **no single "correct" Magic Mouthwash formula** — your physician will select the ingredients that best fit your condition. Common components include: **diphenhydramine** (numbing, anti-inflammatory), **lidocaine** (pain relief), **nystatin** (antifungal, often for chemo patients), **hydrocortisone** (anti-inflammatory), **antacids** (coating and pH balance), **tetracycline or doxycycline** (antibacterial), and **sucralfate** (mucosal protection). Custom combinations are tailored to you.

## How to Use

- Measure**  
Use the dose your prescriber specified (typically 1–2 teaspoons / 5–10 mL).
- Swish**  
Swish around the mouth for 30–60 seconds, coating all affected areas.
- Spit or Swallow**  
Per your doctor's instructions — some formulas are spit out, others are swallowed for esophageal involvement.
- Repeat**  
Typically used 4–6 times daily, before meals and at bedtime, or as directed.

### Compounded at The Medicine Shoppe

Custom formula · ingredients per your prescriber  
Quantity varies by prescription · Cash pay

## Could This Be Right for You?

- You're undergoing chemotherapy or radiation and have painful mouth sores
- You experience frequent or severe canker sores that won't heal
- You're recovering from oral surgery or a dental procedure with significant pain
- Your doctor has recommended a multi-ingredient mouth rinse for your condition

Ask your doctor about a Magic Mouthwash formula for you.

The Medicine Shoppe · 1698 S Queen St, York PA 17403 · (717) 846-0500

Phone, fax (717) 845-8767, or e-prescribe. For educational purposes only — not medical advice.