



2019 USA Special Report

Activation: 2019 Severe Weather Special Report

Situation Report 1 - period covered: March, April, May 2019

Prepared by: Humanity Road / Animals in Disaster

Situation Overview Highlights:

This special USA situation report provides detailed state summaries for storms, tornadoes, straight line winds and flooding for the past 90 days across the United States.

According to the National Weather Service, there were nearly 4,400 individual reports of severe weather reported in May alone. These included tornadoes, hail and straight-line winds, and was the highest recorded since May since 2011. Record-breaking rainfall in Oklahoma and Kansas resulted in historic flooding throughout the Arkansas River Basin, along with remnant flooding in the Missouri and Mississippi River. Record rainfall swamped the south-central U.S. over the past few weeks, leading to catastrophic flooding along the Arkansas River in both Oklahoma and Arkansas. In several locations, the river was at its highest level ever recorded, including Fort Smith, Ark. basins. [source](#)

Twitter handles

[@Humanityroad](#)

[@DisasterAnimals](#)

[@jAIDdog](#)

[@DAFNReady](#)

Facebook pages

[Humanity Road](#)

[Animals in Disaster](#)

About Humanity Road: Founded in 2010 as a 501(c)3 non-profit corporation, [Humanity Road](#) is a leader in the field of online disaster response. Through skilled and self-directed work teams, Humanity Road and its network of global volunteers aim to provide the public and disaster responders worldwide with timely and accurate aid information. Providing such information helps individuals survive, sustain, and reunite with loved ones. For more information, please visit www.humanityroad.org.

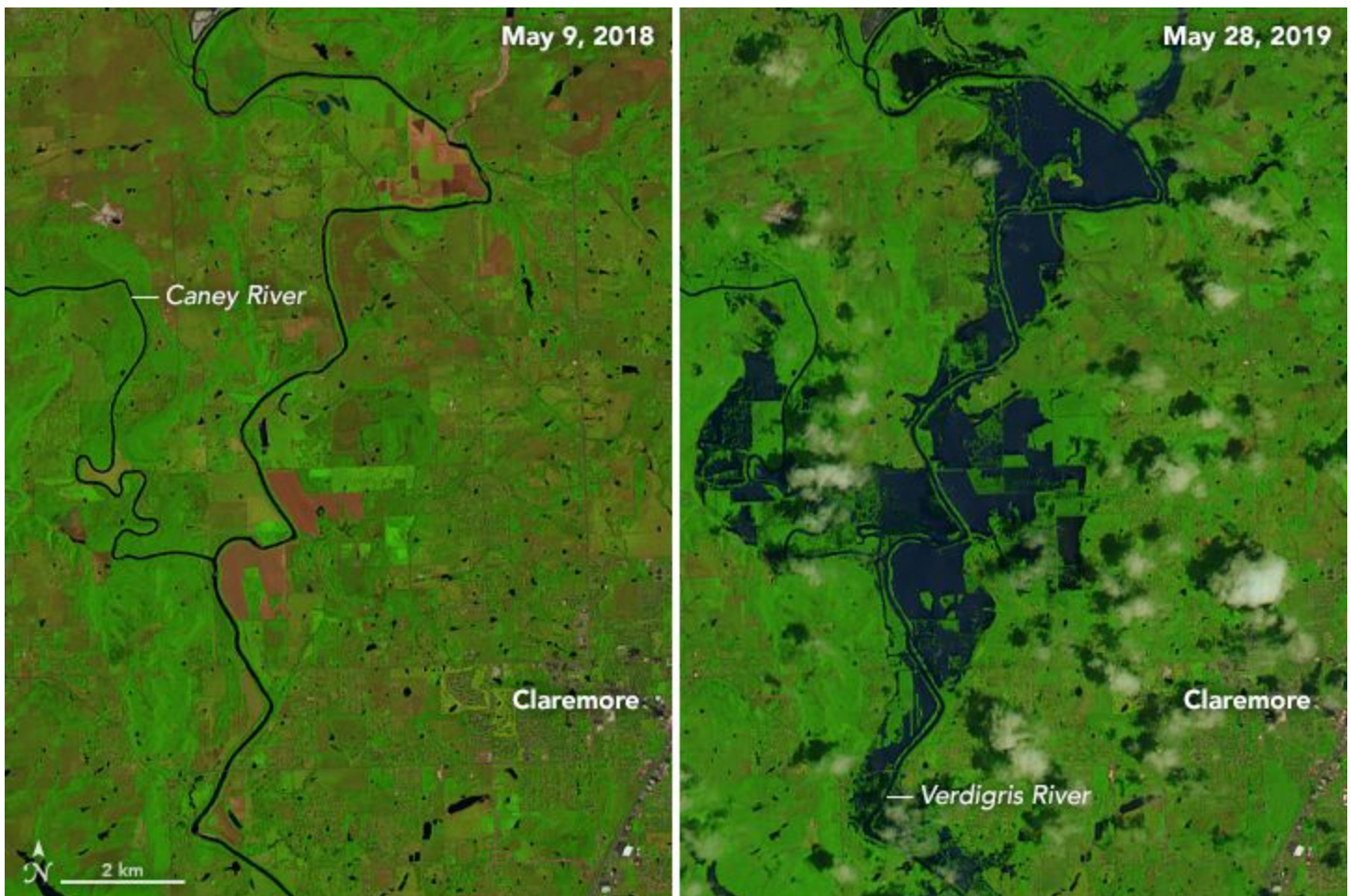
Table of Contents

Situation Overview	3
Significant Updates (most recent first)	4
National Links	4
USA States Impacted	5
Alabama 12 of 67 counties	5
Arkansas - 16 of 75 Counties	7
California - 28 of 58 Counties and 3 Indian Reservations	9
Colorado 0 counties of 64 counties	10
Florida - 4 of 67 Counties	11
Georgia - 6 Counties of 159 Counties	11
Illinois- 34 Counties of 102	12
Indiana - 8 Counties of 92	14
Iowa - 75 of 99 Counties and 1 Tribe	14
Kansas - 63 of 105 Counties	17
Kentucky- 57 of 120 Counties	19
Louisiana- 10 Counties of 64 Counties	21
Mississippi - 22 counties of 82 counties	22
Missouri - 12 Counties of 114 counties	23
Montana- 8 Counties of 56 counties	26
Nebraska - 80 of 93 Counties and 4 Native American	26
New Mexico - 2 Counties of 33 counties	28
North Carolina 5 of 100 counties	29
North Dakota - 2 Counties of 53 counties	29
Ohio - 21 counties of 88 counties	30
Oklahoma - 77 Counties of 77 counties	32
Oregon - 5 Counties of 36 counties	33
Pennsylvania - 6 Counties of 67 counties	34
South Carolina - 0 Counties of 46 counties	35
Tennessee - 57 Counties of 95 counties	36
Texas - 26 Counties of 254 counties	36
Washington - 9 Counties of 39 counties	38
Response and Recovery efforts	39
Special Needs and vulnerable populations	40
Maps and Reports	40
Volunteers Reporting	40

Situation Overview

The Southern and Central United States have been battered by Tornado outbreaks and drenched by rainstorm after rainstorm in the spring of 2019, leading to widespread flooding. Across the continental United States, river gauges at 404 locations were above flood stage on May 29, with the vast majority along the Missouri, Mississippi, and Arkansas rivers and their tributaries.

The problem was most acute in late May along the Arkansas River. As of May 29, the National Weather Service reported flooding at 22 gauges along the river in Kansas, Oklahoma, and Arkansas, not including nearby tributaries and lakes. Major flooding was observed at 13 of those gauges. News media and forecasters predicted flooding in every major community along the river in the coming days. Every county in Oklahoma was in a state of emergency, and evacuations were ordered or recommended in several communities in Arkansas. [source](#) The image pair below shows flooding on the northeast side of Tulsa, along the Caney and Verdigris rivers, which flow into the Arkansas.



Significant Updates (most recent first)

- In the past 90 days 27 states and 650 counties and parishes have been impacted by significant weather events including tornadoes, straight line winds, hail and flooding.
- Receding flood waters are revealing damage to roads and bridges [source](#)
- California, the La Jolla band of Luiseno, Cahuilla band of Indians, and Soboba Indian reservation have all experienced flooding, landslides and mudslides [FEMA DR 4425](#).
- Oklahoma: The Muskogee and Cherokee Nations closed riverfront casinos. [source](#)
- Oklahoma: Cherokee Nation Tribal responding to flood damage from the Arkansas River at the local public schools and the tribal head start building. [source](#)
- In the following report, tornado items appearing in red are EF 2 or higher.

National Links

FEMA

- Website <https://www.fema.gov/>
- Twitter <https://twitter.com/fema>
- Facebook <https://www.facebook.com/FEMA/>

National Weather Service (NWS)

- Website <https://www.weather.gov/>
- Twitter <https://twitter.com/nws>
- Facebook <https://www.facebook.com/nws>

American Red Cross

- Website <http://www.redcross.org/>
- Twitter <http://www.twitter.com/redcross>
- Facebook <https://www.facebook.com/redcross>

Distress Line

- Website <https://www.samhsa.gov/find-help/disaster-distress-helpline>
- Twitter <https://twitter.com/distressline>
- Facebook <https://www.facebook.com/samhsa>

Humanity Road

- Website: <https://humanityroad.org>
- Twitter: <https://twitter.com/humanityroad>
- Facebook <https://www.facebook.com/humanityroad>

ITDRC

- Website <https://itdrc.org>

- Twitter: <https://twitter.com/itdrc>
- Facebook <https://www.facebook.com/itdrc>

USA Childcare Aware

- Website usa.childcareaware.org
- Twitter <https://twitter.com/childcareaware>
- Facebook <https://www.facebook.com/ChildCareAware/>

Crisis Cleanup

- Website <https://t.co/XPj8kzCKGR>
- Twitter <https://twitter.com/CrisisCleanup>
- Facebook <https://www.facebook.com/CrisisCleanup/>

USA States Impacted

Alabama 12 of 67 counties

Social Media Accounts

Twitter: <https://twitter.com/AlabamaEMA>

Facebook: <http://www.facebook.com/AlabamaEMA>

Website: <http://ema.alabama.gov/>

General Summary

As of June 6, a total of 13 counties in Alabama were declared a disaster from recent severe storms, straight line winds, tornadoes and flooding (Blount, Cherokee, Colbert, DeKalb, Franklin, Greene, Jackson, Lee, Lamar, Madison, Marion, Morgan, Winston). For year to date 2019 NOAA reports ¹ a total of 351 Severe Weather reports for Alabama including 75 Tornadoes, 35 Hail reports and 241 Wind Reports. In the past 90 days, there have been 47 tornadoes impacting communities across 32 counties.

Tornado Summary

Alabama on average has 47 tornadoes each year. As of April 22, 2019 a total of 54 tornadoes had already been reported [source](#). An EF4 tornado struck Beauregard, Alabama on March 3 killing 23 people and leaving thousands without power. The tornado was nearly a mile wide in Lee County [source](#). On March 5, a presidential major disaster declaration was made following severe storms, straight-line winds, and tornadoes that impacted Lee County on March 3rd. [source](#). Below is a summary of tornado and storm related disaster declarations in past 90 days for Alabama.

Mar 3

- Tornado Outbreak

County	EF	Location
○ Macon-Lee	EF4	Beauregard - NW of Society Hill & NE of Smiths Station
○ Barbour	EF2	Weedon Field NE of Old Town Creek Recreation Area

¹ <https://www.spc.noaa.gov/climo/online/monthly/states.php?month=00&year=2019&state=AL>

- Barbour [EF2](#) County Rd 79 SSW of Batesville & SW Lugo
- Macon-Lee [EF2](#) Davisville ESE of Liverpool & S of Griffen Mill
- Geneva [EF1](#) NNE of Fadetter & S of Slocomb
- Washington [EF1](#) SW of McIntosh
- Washington [EF1](#) S of Chatom
- Crenshaw-Pike [EF1](#) NW of Honoraville
- Henry [EF0](#) SE of Shorterville
- Bullock [EF0](#) County Rd 8 SSW of Inverness SW Lugo
- Autauga [EF0](#) County Rd 33 ENE of Mulberry

Mar 4

- Severe Storms, Straight-line Winds, And Tornadoes
 - [FEMA DR-4419](#) Declared on Monday, March 4, 2019 - 19:00
 - Map: https://gis.fema.gov/maps/dec_4419.pdf
 - Counties: Lee County

Mar 14

- Tornado Outbreak

<u>County</u>	<u>EF</u>	<u>Location</u>
○ Elmore	EF2	WNW of Holtville & NE of Ten Cedars Estates
○ Autauga	EF1	S of Dawson Mill & SSW of Vida Junction
○ Cullman	EF1	NNW of Hanceville & NNw of Holly Pond
○ Perry-Chilton	EF1	ESE Ellards & NE of Oakmulgee
○ St. Clair	EF1	SE St Clair Springs & N of Wattsville
○ Blount-Etowah-StClair	EF1	SW Allgood to N of Camp Sumatanga
○ Chilton-Coosa	EF0	NNW of Gap of the Mtn & SSE of Marble Valley
○ Perry-Douglass	EF0	NNW & NNE of Central Mills
○ Marengo	EF0	ENE of Dayton & SW of Uniontown
○ Calhoun	EF0	N of Ohatchee
○ Perry	EF0	ENE of Morgan Springs & Heiberger
○ Tuscaloosa	EF0	S of Bankhead Lock & Dam & WSW Bull City
○ Blount	EF0	NW of Allgood & W of Oneonta
○ Randolph	EF0	SSW of Wedowee & SSW Woodland
○ Coosa	EF0	ESE of Parkdale & N of Goodwater

Apr 8

- Tornado Outbreak

<u>County</u>	<u>EF</u>	<u>Location</u>
○ Blount	EF1	ESE of Blountsville & SSW of Brooksville
○ Blount	EF0	SW Hayden & NE Hayden

Apr 13

- Tornado Outbreak

<u>County</u>	<u>EF</u>	<u>Location</u>
○ Franklin	EF1	ENE of Red Bay & NNE of Red Bay
○ Marion	EF1	SSW of Shottsville & WSW Shottsville
○ Marshall	EF1	NNW of Douglas and S of Guntersville

Apr 14

- Tornado Outbreak

<u>County</u>	<u>EF</u>	<u>Location</u>
○ Colbert	EF1	WSW of Leighton
○ Etowah	EF1	NNE of Glencoe - NNE Hokes Bluff

- Tuscaloosa EF1 NE of Low Gap and N of Hagler
- Pike EF1 WSW of Troy
- Crenshaw-Pike EF0 W of Goshen
- Pike EF0 W of Henderson
- Russell EF0 SE of Phenix City
- Shelby EF0 WNW of Calera - SSE of Shelby Cty Airport
- Shelby EF0 SE of Oak Mountain Lake & W of Shoal Creek Golf Club
- Perry EF0 ENE of Sprott & SW Oakmulgee
- Hale EF0 NE of Gallion & E of Cedarville

Apr 16

- Severe Storms, Straight-line Winds, Tornadoes, And Flooding
 - [FEMA DR-4426](#) Declared on Tuesday, April 16, 2019 - 20:00
 - Map: https://gis.fema.gov/maps/dec_4426.pdf
 - Counties: Blount, Cherokee, Colbert, DeKalb, Franklin, Greene, Jackson, Lamar, Madison, Marion, Morgan, Winston

May 8

- Tornado Outbreak

<u>County</u>	<u>EF</u>	<u>Location</u>
○ DeKalb	EF1	SSE of Fyffe
○ Marshall	EF1	NE of Albertville
○ Madison	EF0	N of Hazel Green

May 12

- Tornado Outbreak

<u>County</u>	<u>EF</u>	<u>Location</u>
○ Houston	EF0	Dothan

Arkansas - 16 of 75 Counties

Social Media Accounts

Twitter: https://twitter.com/AR_Emergencies

Facebook: <http://www.facebook.com/Aremergencies>

Website: <https://www.adem.arkansas.gov/>

General Summary

As of June 7, severe storms and flooding have impacted 16 counties: Arkansas, Conway, Crawford, Desha, Faulkner, Franklin, Jefferson, Johnson, Lincoln, Logan, Perry, Pope, Pulaski, Sebastian, Washington, and Yell

On May 28, the Arkansas River in western Arkansas was at its highest water level ever recorded. [source](#) Near the Oklahoma border [at Fort Smith, Arkansas](#) (pop 300,000), the river rose to two feet above its previous all-time high on Tuesday morning, and was predicted to rise at least another two feet before cresting on Wednesday. As of May 31, Along the Arkansas River in Arkansas,

communities prepared for more record-breaking crests. Officials ordered mandatory evacuations for about 500 homes that sit within the levee system in Jefferson County, just southwest of Little Rock. [source](#) Arkansas Department of Health is waiving the \$17 fee for flood victims to have private wells tested for bacterial contamination. A water sampling kit is available for free at each of the state's [75 local county health units](#)

By June 6 flooding was finally receding in most parts of Central Arkansas along the Arkansas River, but at Lake Conway, flooding is still a major problem for many residents. Arkansas Game and Fish Commission explains that floodwater from the Arkansas River is flowing backward through Palarm Creek, filling Lake Conway. [source](#)

Tornado Summary

For 2019 NOAA reports ² a total of 197 severe weather events including 24 Tornadoes, 34 Hail and 139 Wind reports.

Mar 9

- Tornado Outbreak

<u>County</u>	<u>EF</u>	<u>Location</u>
○ Pulaski / Lonoke	EF1	E of Wrightsville NNW of Keo
○ Lonoke / Prairie	EF1	S of Culler S of Screeton
○ Lonoke / Prairie	EF1	S of Parkers Corner WNW of Slovak

Apr 30

- Tornado Outbreak

<u>County</u>	<u>EF</u>	<u>Location</u>
○ Boone	EF1	SSE of Berman WSW South Lead Hill

May 2

- Tornado Outbreak

<u>County</u>	<u>EF</u>	<u>Location</u>
○ Pulaski	EF0	NNW of Sylvan Hills, SSW of Olmstead
○ Faulkner	EF0	SW of Otto NNE of Cato
○ Prairie	EF0	WSW of Des Arc to NNW of Des Arc
○ Jacson	EF0	ese OF sWIFTON
○ Greene	EF0	NE of Lafe

May 8

- Tornado Outbreak

<u>County</u>	<u>EF</u>	<u>Location</u>
○ Jefferson	EF0	ENE of Pine Bluff

May 18

- Tornado Outbreak

<u>County</u>	<u>EF</u>	<u>Location</u>
○ Le Flore / Sebastian	EF1	SSW of Arkoma to NE of Ft Smith
○ Sebastian	EF1	NW of Greenwood to NE of Greenwood
○ Sebastian / Crawford	EF1	NW of Barling to SW of Kibler
○ Sebastian / Franklin	EF1	SE of Lavaca to NNE of Charleston

² <https://www.spc.noaa.gov/climo/online/monthly/states.php?month=00&year=2019&state=AR>

- Crawford [EF1](#) NW of Mulberry to ENE of Mulberry
- Prairie [EF0](#) W of Slovak

May 21

- Arkansas Severe Storms And Flooding (EM-3414)
 - [FEMA EM-3414](#) Declared on Wednesday, May 29, 2019 - 20:00
 - Counties: Arkansas, Chicot, Conway, Crawford, Desha, Faulkner, Franklin, Jefferson, Johnson, Lincoln, Logan, Perry, Pope, Pulaski, Sebastian, Yell

California - 28 of 58 Counties and 3 Indian Reservations

Social Media Accounts

Twitter: https://twitter.com/Cal_OES

Facebook: <https://www.facebook.com/CaliforniaOES>

Website <https://www.caloes.ca.gov/>

General Summary:

A presidential disaster declaration was made for the La Jolla Indian Reservation on March 26, for the Cahuilla Indian Reservation on March 27, and for the Soboba Band Luiseno Indians on April 9, 2019 due to the impact of severe storms, flooding and landslides in February. Public Assistance was approved. (Assistance to State, Local, Tribal and Territorial governments and certain private-non-profit organizations for emergency work and the repair or replacement of disaster-damaged facilities). In addition, All areas within the La Jolla Band of Luiseño Indians, the Cahuilla Indian Reservation, and the Soboba Band Luiseno Indians are eligible for assistance under the Hazard Mitigation Grant Program.

In May, an additional 28 counties were declared a disaster due to winter storms, flooding, mudslides and landslides. In 2019 NOAA reports ³ 35 severe weather reports including 14 tornadoes, 8 hail and 13 wind reports.

Feb 2

<u>County</u>	<u>EF</u>	<u>Location</u>
Colusa	EF0	2 m E of Stegeman
Mariposa	EF0	2 m NNW of Ben Hur
Sutter	EF0	5 m SSW Yuba City S

Feb 15

- Tornado Outbreak:

<u>County</u>	<u>EF</u>	<u>Location</u>
Madera	EF0	5 m SE of Knowles

Mar 26

- La Jolla Band of Luiseño Indians Severe Storms, Flooding, Landslides, And Mudslides

³ <https://www.spc.noaa.gov/climo/online/monthly/states.php?month=00&year=2019&state=CA>

- [FEMA DR-4422](#) Declared on Tuesday, March 26, 2019 - 20:00
- Map: [Mar 26 La Jolla Band Disaster Declaration Storms, mudslides, landslides](#)
- Counties: La Jolla Indian Reservation

Mar 28

- Cahuilla Band of Indians Severe Storms And Flooding (DR-4423)
 - [FEMA DR-4423](#) Declared on Wednesday, March 27, 2019 - 20:00
 - Map: [Mar 27 Cahuilla Indian Reservation Disaster Declaration](#)
 - Counties: Cahuilla Indian Reservation

Apr 8

- Soboba Band Luiseno Indians Severe Storms And Flooding (DR-4425)
 - [FEMA DR 4425](#) Major Disaster Declaration declared on April 08, 2019
 - Map: [Map Soboba Band Luiseno Indians Severe Storms And Flooding \(DR-4425\)](#)
 - Counties: Soboba Indian Reservation

May 1

- California Severe Winter Storms, Flooding, Landslides, And Mudslides
 - [FEMA DR-4431](#) Declared on Tuesday, April 30, 2019 - 20:00
 - Map: [Map California Severe Winter Storms, Flooding, Landslides, And Mudslides](#)
 - Counties: Calaveras, Colusa, Marin, Mariposa, Mendocino, Modoc, Napa, Riverside, Santa Barbara, Shasta, Trinity

May 17

- California Severe Winter Storms, Flooding, Landslides, And Mudslides
 - [FEMA DR-4434](#) May 17 California Severe Winter Storms, Flooding, Landslides, Map: https://gis.fema.gov/maps/dec_4434.pdf
 - Counties: Amador, Butte, Colusa, Del Norte, El Dorado, Glenn, Humboldt, Lake, Marin, Mariposa, Mendocino, Monterey, Napa, Sonoma, Tehama, Trinity, Tuolumne

Colorado 0 counties of 64 counties

Social Media

Twitter: <https://twitter.com/COEmergency>

Facebook: <https://www.facebook.com/COEmergency>

Website: <http://www.coemergency.com/>

General Summary

As of June 7, 2019 there have been no disaster declarations for the state of Colorado. For year to date 2019 NOAA reports⁴ 113 severe weather reports including 26 tornadoes, 64 hail reports and 23 wind reports. Currently Avalanche debris causing blockages leading to potential flood threats. Updates can be accessed at <http://www.coemergency.com/>

⁴ <https://www.spc.noaa.gov/climo/online/monthly/states.php?month=00&year=2019&state=CO>

Tornado Summary: In May, tornadoes were reported in several Colorado counties including Weld, Adams, Lincoln, Kiowa, Prowers and Bent. Most of the twisters were on the ground for five minutes or less and none of them caused any damage

Florida - 4 of 67 Counties

Social Media

Twitter: <https://twitter.com/FLSERT>

Facebook: <http://www.facebook.com/FloridaSERT>

Website: <http://www.floridadisaster.org/>

General Summary

In 2019 year to date, NOAA reports that Florida experienced a total of 265 severe weather events, 14 Tornado reports, 38 Hail reports and 225 wind reports. No significant flooding however, current and recent thunderstorms this week brought heavy rainfall and led to flooded roadways across South Florida, leaving thousands of people without power. Currently no streams are in flood stage. USGS Flood [Map](#)

Tornado Summary

May 3 Tornado outbreak Florida [Map](#) The strongest tornado was rated EF-3 in Leon/Jefferson County, Florida. This was only the second F3 or EF-3 to affect Leon County since 1945. In Jackson County 16 homes were damaged by an EF1.

Mar 3

- Tornado Outbreak:

<u>County</u>	<u>EF</u>	<u>Location</u>
Leon & Jefferson County	EF3	Leon County
Jackson County	EF1	Jackson County
Walton County	EF0	Walton County
Gadsden County	EF1	Gadsden County

Georgia - 6 Counties of 159 Counties

Social Media

Twitter: <https://twitter.com/GeorgiaEMA>

Facebook: <http://www.facebook.com/GEMA>

Website: <http://georgia.gov/agencies/georgia-emergency-management-agency>

General Summary:

For year to date 2019 NOAA reports ⁵ 352 severe weather events including 53 tornadoes, 38 hail reports and 261 wind reports. More than 460 people are still staying in 26 Red Cross and community shelters and that number could rise as new storms threaten and flood waters continue to overflow the river banks. [source](#)

Flooding Summary: On April 19th, 2019 a very heavy rainfall lead to flash flooding in several areas some received 6 inches of rain. [source](#) In May the downtown area of Helen, Georgia flooded due to the Chattahoochee river with business damage and road damage. [source](#). Flooding [Map](#)

Tornado Summary

Mar 3

- Tornado Outbreak:

<u>County</u>	<u>EF</u>	<u>Location</u>
○ Crawford	EF2	Greer Rd, Wesley Chapel Rd
○ Stewart	EF2	Wesley Chapel Rd & Philadelphia Rd
○ Webster	EF2	Wester
○ Columbia	EF2	Evans
○ Harris	EF2	along Gray Rock Rd & Ellerslie
○ Talbot	EF2	Talbotton
○ Harris	EF1	Pine Mountain & Hwy GA-18
○ Peach	EF1	Taylor Mill Rd, Vinson Rd
○ Muskogee	EF1	near Winding Ridge Rd
○ Quitman	EF1	Lakepoint Resort State Park
○ Twiggs	EF1	Huber near KaMin factory
○ Wilkinson	EF1	S of Toombsboro
○ Washington	EF1	S of Heard's Bridge Rd
○ Washington	EF1	Oconee, Kaolin Rd & Hwy 272
○ Bibb	EF0	Macon
○ Telfair	EF0	E of Workmore, Big Horse Creek Rd
○ Telfair	EF0	Workmore S of McRae
○ Macon / Peach	EF0	E of Marshallville
○ Taylor	EF0	S of Ruper

Illinois- 34 Counties of 102

Social Media

Twitter: <https://twitter.com/ReadyIllinois>

Facebook: <http://www.facebook.com/ReadyIllinois>

Website: <http://iema.illinois.gov/iema/index.asp>

General Summary:

On May 3, 2019, after major flooding, the governor issued a state disaster declaration for 34 of the 102 counties in Illinois. Illinois has seen record river crests, residential evacuations and flood-related washouts and road buckling. As of May 31, About 200 Illinois National Guard members had been

⁵ <https://www.spc.noaa.gov/climo/online/monthly/states.php?month=00&year=2019&state=GA>

deployed along the Illinois and Mississippi rivers to assist with flood and levee monitoring. flooding in the state has been ongoing for about 80 days and is expected to reach “historic highs.” It comes amid spring flooding across the Midwest . John Sullivan of the Illinois Department of Agriculture says just 35% of corn crops and 14% of soybeans had been planted this season because of heavy rainfall [source](#)

Tornado Summary:

For year to date 2019 NOAA reports ⁶ a total of 294 severe weather events including 21 tornadoes, 61 hail reports and 212 wind reports. While there were 21 tornadoes in the past 90 days in Illinois, none were rated higher than EF1. There are no disaster declarations related to tornadoes in Illinois.

May 3

- Severe Flooding and Storms
 - Governor declares 34 counties battling floods disaster areas [source](#)
 - **Map:** [USGS Illinois Flood Map](#)
 - **Counties:** Adams, Alexander, Brown, Bureau, Calhoun, Carroll, Cass, Fulton, Greene, Grundy, Hancock, Henderson, Jackson, Jersey, Jo Daviess, LaSalle, Madison, Marshall, Mason, Mercer, Monroe, Morgan, Peoria, Pike, Putnam, Randolph, Rock Island, Schuyler, Scott, St. Clair, Tazewell, Union, Whiteside, Woodford

May 23

- Tornado Outbreak

<u>County</u>	<u>EF</u>	<u>Location</u>
○ Sangamon, Menard, Logan	EF1	SW of Cantrall to W of Broadwell
○ Logan	EF1	N of Lincoln
○ Piatt	EF1	N of Cisco
○ Vermilion	EF1	Muncie
○ Clay	EF0	WSW of Xenia

May 24

- Tornado Outbreak

<u>County</u>	<u>EF</u>	<u>Location</u>
○ McDonough	EF1	N of Industry
○ McDonough	EF1	NE of Industry
○ Champaign	EF1	Champaign
○ Champaign	EF1	Urbana
○ Champaign	EF1	SW of St Joseph
○ Fulton	EF0	W of Lewistown

May 27

- Tornado Outbreak

<u>County</u>	<u>EF</u>	<u>Location</u>
○ Kendall	EF0	NNW of Plattville
○ Will	EF0	SW of Romeoville
○ Knox	EF0	S of Dahinda
○ Vermillion	EF0	S of Henning

⁶ <https://www.spc.noaa.gov/climo/online/monthly/states.php?month=00&year=2019&state=IN>

- Lee EF0 SW of Paw Paw
- Cook EF0 SSE of Sauk Village
- Woodford EF0 NW of Benson

May 29

- Tornado Outbreak

<u>County</u>	<u>EF</u>	<u>Location</u>
○ Christian	EF0	NNW of Stonington
○ Christian	EF0	N of Edinburg
○ Christian	EF0	NE of Stonington
○ Macon	EF0	E of Blue Mound

Indiana - 8 Counties of 92

Twitter: <https://twitter.com/IDHS>

Facebook: <http://www.facebook.com/pages/Indiana-Department-of-Homeland-Security/22183791246>

Website: <http://www.in.gov/sema/>

General Summary

For year to date 2019 NOAA reports ⁷ 294 severe weather events including 21 tornadoes, 61 hail reports and 212 wind reports. As of June 10, 2019 there have been no disaster declarations for the state of Indiana.

Tornado Summary

There were at least 500 structures damaged in the Pendleton area when an EF-2 tornado swept across Madison County on Memorial Day. According to preliminary damage estimates roughly 1,500 structures in the storm's path were surveyed and about 33 percent of those structures suffered some level of damage. At least 30 to 40 of those structures were either destroyed or heavily damaged

May 27

- Tornado Outbreak

<u>County</u>	<u>EF</u>	<u>Location</u>
○ Miami, Fulton	EF3	N of Macy to SSE of Silver Lake
○ Blackford, Wells	EF3	N of Roll to S of Nottingham
○ Madison	EF2	Pendleton
○ Grant	EF2	SSW of Somerset
○ Wabash	EF1	NW of Manchester
○ Henry	EF1	S of Middletown
○ Henry	EF1	ESE of Middletown

Iowa - 75 of 99 Counties and 1 Tribe

⁷ <https://www.spc.noaa.gov/climo/online/monthly/states.php?month=00&year=2019&state=IN>

Social Media

Twitter: <https://twitter.com/iowaHSEMD>

Facebook: <https://www.facebook.com/iowaHSEMD>

Website: <https://www.homelandsecurity.iowa.gov/>

General Summary:

As of June 7, 2019, Iowa state disaster proclamations were made for 75 of the 99 counties in Iowa.

Ten streams are in flood stage as of June 10, 2019 [Map](#)

Presidential declarations were made for 58 counties and 1 tribe as a result of severe storms and flooding. Counties: Adair, Adams, Allamakee, Appanoose, Audubon, Boone, Bremer, Buena Vista, Butler, Calhoun, Carroll, Cass, Cedar, Cherokee, Clay, Clinton, Crawford, Dallas, Davis, Decatur, Des Moines, Dickinson, Emmet, Fayette, Franklin, Fremont, Greene, Guthrie, Hamilton, Hancock, Hardin, Harrison, Henry, Howard, Humboldt, Ida, Iowa, Iowa, Jasper, Johnson, Kossuth, Lee, Louisa, Lucas, Lyon, Madison, Mahaska, Marion, Marshall, Mills, Monona, Monroe, Montgomery, O'Brien, Osceola, Page, Palo Alto, Plymouth, Pocahontas, Polk, Pottawattamie, Pottawattamie, Sac, Scott, Shelby, Sioux, Tama, Union, Van Buren, Wapello, Wayne, Webster, Winnebago, Winneshiek, Woodbury, Wright, [source](#)

Since March 2019 Iowa has been in flood stage due to rain, melting snow, and ice jams. Iowa was declared a state of emergency by March 16th, 2019 for the following counties; Fremont, Harrison, Louisa, Mills, Monona, Pottawattamie, Scott, Shelby, Woodbury. Missouri Valley evacuated 2,000 residents. Primghar, Iowa had record rainfall levels at 50.8 mm in 24 hours. Currently there are 20 stream gauges flooding. [source](#)

Tornado Summary:

For year to date 2019 NOAA reports ⁸ 112 severe weather reports including 27 tornadoes, 37 hail reports and 48 wind reports. 56 counties Multiple tornadoes ripped through eastern Iowa in May damaging several homes, barns and trees. [source](#)

Mar 12

- Severe Storms And Flooding
 - [FEMA DR-4421](#) Declared on Friday, March 22, 2019 - 20:00 FEMA DR-4430 Declared on Sunday, April 28, 2019 - 20:00
 - Map: [May 10 2019 Severe Storms and Flooding PDF](#)
 - **Public Assistance Counties:** Adair, Adams, Allamakee, Audubon, Boone, Bremer, Buena Vista, Butler, Calhoun, Carroll, Cass, Cherokee, Clay, Crawford, Dallas, Decatur, Dickinson, Emmet, Fayette, Franklin, Fremont, Greene, Guthrie, Hamilton, Hancock, Hardin, Harrison, Howard, Humboldt, Ida, Iowa, Jasper, Kossuth, Lyon, Madison, Mahaska, Marshall, Mills, Monona, Montgomery, O'Brien, Osceola, Page, Palo Alto, Plymouth, Pocahontas, Polk, Pottawattamie, Sac, Shelby, Sioux, Tama, Union, Webster, Winnebago, Winneshiek, Woodbury, Wright
 - **Individual Assistance Counties:** Fremont, Harrison, Louisa, Mills, Monona, Pottawattamie, Scott, Shelby, and Woodbury.

⁸ <https://www.spc.noaa.gov/climo/online/monthly/states.php?month=00&year=2019&state=IA>

Mar 13

- Sac and Fox Tribe of the Mississippi in Iowa Severe Storms And Flooding
 - [FEMA DR-4430](#)
 - Map : [Mar 13 Sac and Fox Tribe Severe Storms and Flooding](#)
 - Counties: Sac and Fox Tribe of the Mississippi in Iowa

May 22

- Tornado Outbreak

<u>County</u>	<u>EF</u>	<u>Location</u>
○ Adair, Guthrie	EF2	Adair
○ Cass	EF1	SE of Anita

May 24

- Tornado Outbreak

<u>County</u>	<u>EF</u>	<u>Location</u>
○ Johnson	EF1	Iowa City
○ Cedar	EF0	NE of West Branch

May 27

- Tornado Outbreak

<u>County</u>	<u>EF</u>	<u>Location</u>
○ Van Buren	EF3	ENE of Cantril
○ Floyd	EF1	Charles City
○ Howard	EF1	S of Saratoga to Lime Springs
○ Lee	EF1	Houghton
○ Howard	EF0	SW of Elma
○ Des Moines	EF0	SW of Burlington

May 27

- Tornado Outbreak

<u>County</u>	<u>EF</u>	<u>Location</u>
○ Poweshiek	EF1	NNE of Barnes City
○ Humboldt	EF0	SE of Bradgate
○ Iowa	EF0	SE of Victor
○ Poweshiek	EF0	NE of Deep River
○ Hardin	EF0	ESE of Garden City
○ Poweshiek	EF0	SE of Guernsey
○ Iowa	EF0	E of Guernsey
○ Johnson	EF0	NW of Kalnone
○ Hardin	EF0	E of New Providence
○ Hardin	EF0	SW of Eldora
○ Hardin	EF0	WNW of Owasa
○ Hardin	EF0	E of Steamboat Rock

June 4

- Gov. Kim Reynolds issued a disaster proclamation May 29 for 10 counties in response to heavy rains, hail, straight-line winds, tornadoes, widespread flooding, and flash flooding beginning May 17 and continuing. She also issued proclamations on May 30 for Van Buren County, May 31 for Appanoose, Cedar, Davis, Johnson,

Lucas, Monroe, and Pottawattamie counties, and on June 4 for Union County for severe weather beginning May 17.

- Counties: Appanoose, Cedar, Clinton, Davis, Des Moines, Henry, Iowa, Johnson, Lee, Louisa, Lucas, Marion, Monroe, Pottawattamie, Scott, Van Buren, Union, Wapello, Wayne

Kansas - 63 of 105 Counties

Social Media

Twitter: <https://twitter.com/KansasEmergency>

Facebook: <https://www.facebook.com/KansasEmergency/>

Website: http://www.kansastag.gov/kdem_default.asp

General Summary:

On June 4, 2019 Atchison, Bourbon and Ford Counties were added to the state disaster proclamation signed by Governor Laura Kelly May 9 which brings the total to 63 of the 105 counties in Kansas. Counties currently named in the declaration are: Allen, Anderson, Barber, Barton, Butler, Chase, Chautauqua, Cherokee, Clark, Clay, Cloud, Coffey, Comanche, Cowley, Crawford, Dickinson, Doniphan, Douglas, Edwards, Elk, Ellsworth, Franklin, Geary, Gray, Greenwood, Harper, Harvey, Hodgeman, Jefferson, Kingman, Leavenworth, Lincoln, Linn, Lyon, Marion, Marshall, McPherson, Meade, Montgomery, Morris, Nemaha, Neosho, Norton, Osage, Ottawa, Pawnee, Phillips, Pottawatomie, Pratt, Reno, Rice, Riley, Rush, Russell, Saline, Sumner, Wabaunsee, Washington, Wilson, and Woodson. [source](#)

Lakeside Village in Jefferson County is without water supply as a result of flooding. The Kansas National Guard, in partnership with Fort Riley's 1st Infantry Division and the Nebraska National Guard, will be transporting six HIPPOs (Load Handling System Compatible Water Tank Racks) to the community to fill their pump house to supply their water system. A liaison officer has also been sent to the area to coordinate with local officials.

All American Red Cross shelters are currently closed. Ten shelters are on standby. All pet shelters have been closed with four on standby. The Kansas State Animal Response Team is supporting pet shelter needs, as needed.

On May 28, a presidential emergency declaration was made for 33 counties for public assistance. Flood [Map](#)

Tornado Summary:

For year to date 2019, NOAA reports ⁹ a total of 645 severe weather reports including 97 tornadoes, 287 hail and 261 wind reports.

⁹ <https://www.spc.noaa.gov/climo/online/monthly/states.php?month=00&year=2019&state=KS>

On May 17, 2019 an EF3 long-tracked tornado passed near the towns of Minneola and Bloom, significantly damaging multiple farmsteads. A semi-truck was blown off the road near the beginning of the path. Homes sustained major structural damage, including roof and exterior wall loss. Barns and outbuildings were completely destroyed, including a metal-framed structure that was severely mangled. Farm machinery was thrown and damaged, trees were snapped and denuded, and a wooden projectile was speared into a dirt road. [source](#)

On May 28, 2019 an EF4 tornado touched down south of Lawrence about 6:15 pm and continued northeast for more than 31 miles before lifting in Leavenworth County. Douglas County officials said the storm injured 17 people, three of them seriously, and damaged more than 60 homes. [source](#) The tornado developed in southwestern Douglas county Kansas and tracked to the east-northeast while strengthening. EF-3 damage occurred in northeastern Douglas county, then the storm gained strength and produced EF-4 damage in southern Leavenworth county Kansas.

May 17

- Tornado Outbreak

<u>County</u>	<u>EF</u>	<u>Location</u>
○ Meade, Clark, Ford	EF3	SE of Fowler to W of Ford
○ Ford, Edwards	EF2	Ford, Edwards
○ Edwards	EF2	Lewis to N of Belpre

May 20

- Tornado Outbreak

<u>County</u>	<u>EF</u>	<u>Location</u>
○ Cherokee	EF1	S of Chicopee
○ Crawford	EF1	S of Pittsburg

May 21

- Tornado Outbreak

<u>County</u>	<u>EF</u>	<u>Location</u>
○ Nemaha	EF3	Bern
○ Jackson	EF2	SW of Mayettato S of Whiting
○ Dickinson	EF1	SSE of Enterprise to S of Chapman
○ Nemaha	EF1	SW of Oneida
○ Atchison	EF1	NW of Effingham
○ Dickinson, Geary	EF0	E of Chapmanto ENE of Milford
○ Shawnee, Jackson	EF0	E of Rossvilleto SW of Mayetta

May 22

- Tornado Outbreak

<u>County</u>	<u>EF</u>	<u>Location</u>
○ Cherokee	EF1	Treece

May 24

- Tornado Outbreak

<u>County</u>	<u>EF</u>	<u>Location</u>
○ Marshall	EF1	Marysville
○ Nemaha	EF1	N of Seneca
○ Butler	EF0	Douglass

May 24

- Tornado Outbreak

<u>County</u>	<u>EF</u>	<u>Location</u>
○ Kansas	EF1	NE of Cimarron
○ Ford	EF1	N of Ford
○ Hodgeman	EF1	NE of Hanston
○ Thomas	EF1	W of Mingo

May 27 (May 9 and Continuing)

- Tornadoes And Flooding

- [FEMA EM-3412](#) Declared on Monday, May 28, 2019 - 20:00
- **Map:** https://waterwatch.usgs.gov/new/index.php?r=ks&id=ww_flood
- **Public Assistance Counties:** Allen, Anderson, Butler, Chautauqua, Cherokee, Coffey, Cowley, Crawford, Dickinson, Doniphan, Douglas, Elk, Franklin, Geary, Greenwood, Harvey, Jefferson, Leavenworth, Linn, Lyon, Marshall, Montgomery, Morris, Neosho, Osage, Pottawatomie, Reno, Riley, Saline, Sumner, Wabaunsee, Wilson, Woodson

May 28

- Tornado Outbreak

<u>County</u>	<u>EF</u>	<u>Location</u>
○ Douglas, Leavenworth	EF4	ENE of Overbrook to Linwood, Bonner Springs
○ Russell, Osborne, Jewell, Mitchell	EF2	W of Waldoto S of Tipton

Kentucky- 57 of 120 Counties

Social Media

Twitter: <https://twitter.com/KentuckyEM>

Facebook: <https://www.facebook.com/KentuckyEM/>

Website: <https://kyem.ky.gov/Pages/default.aspx>

General Summary:

As of June 7, 2019 there are 57 of the 120 counties in Kentucky that have received a Presidential disaster declaration.

In early April, Gov. Matt Bevin sent a letter requesting a Presidential Disaster Declaration for 58 Kentucky counties that were impacted during a severe weather event in February and March. The system produced extended episodes of strong winds and torrential rain which caused flooding, flash flooding, landslides, and mudslides. The weather system caused over \$41 million in damages statewide, the majority of that related to highways, bridges, and utility infrastructure. Three Kentuckians lost their lives during this event, along with many minor injuries.

Severe storms in February increased water levels at dams in central and western Kentucky, resulting in record water releases at Wolf Creek Dam in Jamestown that have caused flooding. The Kentucky Division of Emergency Management has received state of emergency declarations from 36 counties and 11 cities. Flood [Map](#)

Tornado Summary

For year to date 2019 NOAA Reports ¹⁰ 164 severe weather events including 13 tornadoes, 25 hail reports and 126 wind reports.

On March 14, 2019, Scattered supercell thunderstorms developed ahead of a cold front on the 14th as it swept east across our region during the day. The supercell activity was preceded by widespread rain and thunderstorms the previous night. The overnight rain was locally heavy, causing some flooding in western Kentucky. Throughout the event, strong gradient winds associated with a strong low pressure system gusted up to 50 mph at times and 6 tornadoes were reported.

An EF2 tornado impacted the counties of McCracken, Ballard, and Carlisle. The tornado developed near Cunningham and quickly intensified and widened, reaching 300 yards wide just west of Lovelaceville. The tornado reached its maximum intensity of EF-2 intermittently from just north of Lovelaceville to just southeast of Barkley Regional Airport (west of Paducah). At least a dozen homes sustained major structural damage, including walls blown outward and partial roof loss. Four cows were killed near Lovelaceville. Dozens of barns, outbuildings, garages, and grain bins were destroyed. Dozens of homes sustained minor damage, such as loss of shingles. A mall on the west side of Paducah sustained some roof damage, as well as an adjacent strip mall. Extensive tree and power line damage caused power outages for thousands. The only reported injury occurred when a grain bin was blown onto a pickup truck on U.S. Highway 62. [source](#)

March 14

- Tornado Outbreak

<u>County</u>	<u>EF</u>	<u>Location</u>
McCracken, Ballard, Carlisle	EF2	Cunningham to Lovelaceville
Union	EF1	Morganfield
Henderson	EF0	Smith Mills
Henderson, Webster	EF0	Sabree
Webster	EF0	Slaughters
Graves	EF0	Hickory

April 17

- Severe Storms, Straight-line Winds, Flooding, Landslides, And Mudslides
 - [FEMA DR-4428](#) Declared on Tuesday, April 16, 2019 - 20:00
 - **Map:** https://gis.fema.gov/maps/dec_4428.pdf
 - **Counties:** Adair, Ballard, Bell, Boyd, Breathitt, Butler, Campbell, Carlisle, Carroll, Carter, Casey, Clay, Crittenden, Cumberland, Edmonson, Elliott, Estill, Floyd, Grant, Greenup, Hancock, Harlan, Henderson, Henry, Jackson, Johnson, Knott, Knox, Laurel, Lawrence, Lee, Leslie, Letcher, Livingston, Madison, Magoffin, Marion, Marshall, Martin, McCracken, McCreary, Metcalfe, Morgan,

¹⁰ <https://www.spc.noaa.gov/climo/online/monthly/states.php?month=00&year=2019&state=KY>

Owsley, Pendleton, Perry, Pike, Powell, Rockcastle, Russell, Trigg, Union, Washington, Wayne, Webster, Whitley and Wolfe.

Louisiana- 10 Counties of 64 Counties

Social Media

Twitter: <https://twitter.com/GOHSEP>

Facebook: <http://www.facebook.com/gohsep>

Website: www.gohsep.la.gov

General Summary:

For year to date 2019, NOAA reports ¹¹ 297 severe weather events for Louisiana including 52 tornadoes, 53 hail events and 192 wind reports. State of emergency declared for flooding that began on May 10, 2019 due to tornadoes with 373 homes damaged and public property and infrastructure. As of June 10, eight stream gauges are in flood in Louisiana Current Flood [Map](#)

Tornado Summary

On June 3, 2019, a federal disaster declaration was made for the parishes of Lincoln, Morehouse, and Union. The request was made after tornadoes in April hit the area, doing more than \$12 million of damages. Two people were killed. Louisiana Tech University was also affected. [source](#)

The Governor of Louisiana [declared a state of emergency](#) following the tornado outbreak of April 25-26, 2019 after multiple road closures, power outages, downed trees, debris and structures damages were reported in Lincoln, Union, Bienville, Caddo, DeSoto, LaSalle, and Morehouse parishes. During the early morning hours of April 25, a large tornado of EF3 intensity caused major damage in Ruston, Louisiana, including portions of the Louisiana Tech University campus. Numerous homes and businesses were damaged or destroyed, vehicles were lofted, and two people were killed when a large tree crushed a house. Another early-morning wedge tornado tracked from Morehouse Parish, Louisiana into Ashley County, Arkansas, mowing down hundreds of trees at EF2 intensity. Near Jena, Louisiana, an EF2 tornado ripped half of the roof off of a house and downed many trees. [source](#)

On May 8 an outbreak of 10 - 12 tornadoes ripped through TX AR and LA. All were EF1 or lower and damage was limited to one or two homes and uprooted and snapped trees. [source](#)

Mar 9

- Tornado Outbreak

<u>County</u>	<u>EF</u>	<u>Location</u>
Caddo Parish	EF1	2 m NE Vivian to 3 E of Mira
Bossier Parish	EF1	2 m SW of Carterville to 1 m E of Carterville
Webster Parish	EF1	.5 W of Springhill to .2 E of Springhill

Apr 24- 25

¹¹ <https://www.spc.noaa.gov/climo/online/monthly/states.php?month=00&year=2019&state=LA>

- Tornado Outbreak

<u>County</u>	<u>EF</u>	<u>Location</u>
○ Lincoln	EF3	Ruston
○ Morehouse Parish / Ashley	EF2	WNW of Beekman SSW of Hamburg
○ LaSalle	EF2	7 m W of Jena
○ Caddo	EF1	1 m ENE of Mooringsport
○ Sabine	TDS	NE of Converse
○ Bienville	TDS	1 m NNE of Lucky
○ Bienville	TDS	3 m E of Bienville
○ Union	TDS	5 m NNE of Downs ville
○ LaSalle	TDS	5 m N of Midway - Summerville
○ Vernon	TDS	5 m NW of Sugartown
- Louisiana Severe Storms And Tornadoes (DR-4439)
 - [FEMA DR-4439](#) Declared on Sunday, June 2, 2019 - 20:00
 - Counties: Lincoln (Parish), Morehouse (Parish), Union (Parish)

May 8

- Tornado Outbreak [Radar Animation Map](#)

<u>County</u>	<u>EF</u>	<u>Location</u>
○ De Soto Parish	EF1	Near Keatchi, LA
○ De Soto Parish	EF1	Near Stonewall
○ De Soto Parish	EF1	East of Stonewall
○ Natchitoches Parish	EF1	Near Readhimer
○ Jackson Parish	EF1	South/East of Jonesboro
○ Jackson Parish	EF1	South of Jonesboro
○ Jackson/Lincoln Parish	EF1	Clay/S. Ruston

May 10 (and continuing)

- Louisiana Flooding (EM-3413)
 - [FEMA EM-3413](#) Declared on Tuesday, May 28, 2019 - 20:00 source
 - Counties: To be determined

Mississippi - 22 counties of 82 counties

Social Media

Twitter: <https://twitter.com/MSEMA>

Facebook: <https://www.facebook.com/msemaorg>

Website: <http://www.msema.org/>

General Summary:

On April 23, 2019, a federal disaster declaration was approved for 23 counties in Mississippi following severe storms, straight-line winds, tornadoes, and flooding from Feb. 22 – March 29, 2019.

On March 25, 2019, a Mississippi congressional congregation requested full consideration of Mississippi Governor Phil Bryant's request for a federal disaster declaration in the event of the

devastating weather events and record flooding across the state. The delegation's letter referenced preliminary damage reports that show 43 of Mississippi's 82 counties have been affected. The letter also referenced Governor Bryant's request, which documented at least 1,323 lost or damaged homes, 126 affected businesses, 839 destroyed or damaged roads, 35 impacted bridges, and one fatality. Fifteen Mississippi counties are currently experiencing flooding, which will cause these initial assessments to increase. [source](#)

Flood [Map](#)

Tornado Summary

As of April 30, 2019, there were 76 tornadoes in Mississippi. The National Weather Service confirmed 44 tornadoes in Mississippi from the April 18 outbreak, tying the record for a single event. The one-day total exceeds Mississippi's annual average of 43 tornadoes during the years 1991-2010.

[source](#)

2019 Tornadoes in Mississippi [ESRI map](#)

May 22 (Feb 22 - Mar 29)

- Mississippi Severe Storms, Straight-line Winds, Tornadoes, And Flooding
 - FEMA DR-4429 Declared on Monday, April 22, 2019 - 20:00
 - **Map:** [Map Apr 23 Severe Storms, Straight-line Winds, Tornadoes, And Flooding \(DR-4429\)](#)
 - **Counties:** Alcorn, Calhoun, Carroll, Chickasaw, Clay, Coahoma, Grenada, Itawamba, Lafayette, Lee, Leflore, Lowndes, Montgomery, Panola, Pontotoc, Prentiss, Quitman, Sunflower, Tallahatchie, Tishomingo, Union, Washington, Webster, Yalobusha

Missouri - 12 Counties of 114 counties

Social Media

Twitter: https://twitter.com/MoSEMA_

Facebook: <https://www.facebook.com/MissouriSEMA/>

Website: <https://sema.dps.mo.gov/>

General Summary

On May 20, 2019, a presidential disaster declaration was made for 12 counties impacted by severe storms, straight line winds, and flooding from March 11 to April 16, 2019. Public Assistance was approved, but individual assistance was not approved. [source](#)

More than a month after the flooding began, Governor Parson declared a state of emergency on March 23, 2019, after 13 counties were inundated by severe flooding. "Many of the affected communities have engaged in flood-fighting activities due to severe flooding along the Missouri and Mississippi Rivers," the letter stated. "The severity and magnitude of the flooding has caused several communities to be evacuated and has resulted in the destruction of homes, farms, and businesses.

Parson also asked that five of the 13 counties—Andrew, Atchison, Buchanan, Holt, and Platte—receive individual assistance, which will allow residents to apply for aid to pay for temporary housing, home repair and replacement of damaged belongings. [source](#)

Flood [Map](#)

Tornado Summary

Year to date in 2019, NOAA reports ¹² 512 severe weather events for Missouri including 88 tornadoes, 145 hail reports and 279 wind reports.

On May 22, 2019, About two dozen people were reportedly injured when a “wedge” tornado ripped through Jefferson City, Missouri at 11:43 p.m. The twister left a 3-square-mile trail of destruction. Authorities had received reports of collapsed apartment complexes and shredded mobile homes. People called to say they were trapped in their homes. Yet, there were no reported fatalities. Earlier in the night, tornadoes flew around southwest Missouri, near the Oklahoma border, setting off alarms in Joplin, where on the same date eight years earlier a tornado killed 161 people. Tornadoes caused damage in the nearby town of Carl Junction and in Golden City, where three people were killed. Despite the widespread damage, authorities announced with relief that injuries in Jefferson City had been minimal, that there were no fatalities and no reports of missing people. [source](#)

April 30

- [Tornado Outbreak](#)

<u>County</u>	<u>EF</u>	<u>Location</u>
○ Christian/Greene	EF2	Ozark / SE Greene County
○ McDonald/Barry	EF1	Wheaton
○ Lawrence	EF1	Miller #1
○ Lawrence/Dade	EF1	Miller #2
○ Polk	EF1	Eudora
○ Greene	EF1	Willard #1
○ Greene	EF1	Willard #2
○ Stone/Christian	EF1	Galena / South Christian
○ Taney/Ozark	EF1	Theodosia
○ Dallas	EF1	Long Lane
○ Douglas	EF1	Squires
○ Douglas	EF1	Hunter Creek
○ Texas	EF1	Bucyrus
○ Wright	EF1	Dawson
○ Wright	EF1	Macomb
○ Wright	EF1	Norwood
○ Phelps	EF1	NE Jerome
○ Phelps	EF0	Edgar Springs
○ Howell	EF0	Willow Springs
○ Barry	EF0	Pleasant Ridge
○ Texas	EF0	Northern Texas
○ Wright	EF0	Mountain Grove
○ Wright	EF0	Hartville

¹² <https://www.spc.noaa.gov/climo/online/monthly/states.php?month=00&year=2019&state=MO>

- Dallas EF0 North Buffalo
- Douglas EF0 Brushy Knob
- Douglas EF0 Goodhope
- Taney EF0 Branson
- Barry EF0 Cassville
- Barry EF0 Shell Knob

May 20

- Tornado Outbreak

<u>County</u>	<u>EF</u>	<u>Location</u>
○ Barton	EF1	S. of Pittsburg KS to SE of Mindenmines MO

May 20 (Mar 11 - Apr 16)

- Missouri Severe Storms, Straight-line Winds, And Flooding (DR-4435):
 - [FEMA DR-4435](#) Declared on Sunday, May 19, 2019 - 20:00
 - Map: https://gis.fema.gov/maps/dec_4435.pdf
 - Counties: Andrew, Atchison, Buchanan, Carroll, Chariton, Holt, Mississippi, New Madrid, Pemiscot, Perry, Platte, Ray, Ste. Genevieve

May 21

- Tornado Outbreak

<u>County</u>	<u>EF</u>	<u>Location</u>
○ Webster	EF1	W of Marshfield
○ Wright	EF1	W of Mansfield to W of Manes
○ Phelps	EF1	E of Beulah to ESE of Edgar Springs
○ Callaway	EF1	E of Yucatan
○ Franklin, St. Charles	EF1	W of Labadieto NE of Augusta
○ Greene	EF0	WSW of Bassville

May 22

- Tornado Outbreak

<u>County</u>	<u>EF</u>	<u>Location</u>
○ Miller, Cole, Callaway	EF3	Eldon to Jefferson City
○ Audrain	EF0	WNW Rush Hilltop S of Santa FE

May 23

- Tornado Outbreak

<u>County</u>	<u>EF</u>	<u>Location</u>
○ Laclede	EF1	Southern Laquey

May 24

- Tornado Outbreak

<u>County</u>	<u>EF</u>	<u>Location</u>
○ Jackson	EF0	Longview Lake
○ Jackson	EF0	Lake Lotawana
○ Lafayette	EF0	Ne of Altamont

May 28

- Tornado Outbreak

<u>County</u>	<u>EF</u>	<u>Location</u>
○ Clay	EF2	SSE of Kearney

May 29

- Tornado Outbreak

<u>County</u>	<u>EF</u>	<u>Location</u>
○ Scott	EF1	NE of Miner

Montana- 8 Counties of 56 counties

Social Media

Twitter: <https://twitter.com/MontanaDES>

Facebook: <https://www.facebook.com/montana.des>

Website: <http://readyandsafe.mt.gov/Emergency>

General Summary

On May 24, 2019, Governor Steve Bullock announced that FEMA has granted the State of Montana its requested Presidential Disaster Declaration for spring flooding. The declaration will provide for flood recovery efforts in Daniels, Lake, McCone, Park, Powder River, Stillwater, Treasure and Valley Counties.

“Early spring flooding caused widespread damage to roads, culverts and private residences, particularly affecting rural communities across Montana,” said Governor Bullock. “I am thankful for FEMA’s diligence and for working with us to secure this funding. Montanans can rest assured that we continue to stand ready to assist in protecting lives and property, cleaning up from this spring flooding, and in mitigating future disasters.” Governor Bullock and Montana Disaster and Emergency Services (MT DES) submitted the request for a Presidential Major Disaster Declaration on May 9 for an estimated \$2.2 million in damages. [source](#)

For year to date in 2019, NOAA reports ¹³ 17 significant weather reports, 8 of which were wind reports.

Flood [map](#)

May 24

- Flooding
 - [FEMA DR-4437](#) Declared on Thursday, May 23, 2019 - 20:00
 - **Map:** https://gis.fema.gov/maps/dec_4437.pdf
 - **Counties:** Daniels, Lake, McCone, Park, Powder River, Stillwater, Treasure and Valley

Nebraska - 80 of 93 Counties and 4 Native American

Social Media

Twitter: <https://twitter.com/NEMAtweets>

¹³ <https://www.spc.noaa.gov/climo/online/monthly/states.php?month=00&year=2019&state=MT>

General Summary

In Nebraska, out of 93 counties in the state, Presidential public assistance disaster declarations have been approved for 81 counties, 3 Native American Reservations and 1 Tribal Designated Statistical area. [source](#) A total of 27 counties have been approved for individual assistance. There has been damage to 27 state bridges and 200 miles of pavement. At the peak of the flooding, over 3,300 miles of roads were closed due to blizzard conditions or water on the roads. By March 23rd, as the waters receded, less than 200 miles remained closed. [source](#) Flood [Map](#)

Tornado Summary

For year to date in 2019, NOAA reports¹⁴ 242 severe weather reports including 30 tornadoes, 160 hail reports and 52 wind reports.

Mar 21 (Mar 9 - Apr 1)

- Severe Winter Storm, Straight-line Winds, And Flooding
 - [FEMA DR-4420](#) Declared on Wednesday, March 20, 2019 - 20:00
 - Map PDF https://gis.fema.gov/maps/dec_4420.pdf
 - Individual Assistance Counties: Antelope, Boone, Boyd, Buffalo, Burt, Butler, Cass, Colfax, Cuming, Custer, Dodge, Douglas, Hall, Howard, Knox, Madison, Nance, Nemaha, Pierce, Platte, Richardson, Saline, Sarpy, Saunders, Stanton, Thurston, Washington, and the Santee Sioux Nation
 - Public Assistance Counties: Adams, Antelope, Banner, Blaine, Boone, Box Butte, Boyd, Brown, Buffalo, Burt, Butler, Cass, Cedar, Cherry, Cheyenne, Clay, Colfax, Cuming, Custer, Dakota, Dawes, Dawson, Deuel, Dixon, Dodge, Douglas, Fillmore, Franklin, Frontier, Furnas, Gage, Garden, Garfield, Gosper, Greeley, Hall, Harlan, Holt, Howard, Jefferson, Johnson, Kearney, Keya Paha, Kimball, Knox, Lancaster, Lincoln, Logan, Loup, Madison, Merrick, Morrill, Nance, Nemaha, Nuckolls, Omaha Indian Reservation, Otoe, Pawnee, Phelps, Pierce, Platte, Polk, Ponca (TDSA), Richardson, Rock, Sac and Fox Indian Reservation (Also KS), Saline, Santee Indian Reservation, Sarpy, Saunders, Scotts Bluff, Seward, Sheridan, Sherman, Sioux, Stanton, Thayer, Thurston, Valley, Washington, Wayne, Webster, Wheeler, Winnebago Indian Reservation, York

May 17

- Tornado Outbreak

<u>County</u>	<u>EF</u>	<u>Location</u>
○ Frontier	EF3	NE of Stockville to SW of Farnam
○ Red Willow	EF2	ESE of Culbertson to NW of McCook
○ Frontier-Dawson	EF1	W of Eustisto NE of Farnam
○ Dawson	EF1	NE of Cozad
○ Custer	EF1	SE of Oconto
○ Frontier	EF0	SW of Stockville

¹⁴ <https://www.spc.noaa.gov/climo/online/monthly/states.php?month=00&year=2019&state=NE>

- Frontier EF0 NE of Stockville
- Frontier EF0 Northwestern Stockville
- Frontier EF0 NE of Stockville
- Dawson EF0 W of Eddyville

May 26

- Tornado Outbreak

<u>County</u>	<u>EF</u>	<u>Location</u>
○ Franklin	EF1	SW of Upland

May 27

- Tornado Outbreak

<u>County</u>	<u>EF</u>	<u>Location</u>
○ Chase	EF1	NW of Imperial
○ Chase	EF0	N of Imperial
○ Chase	EF0	NNE of Imperial

New Mexico - 2 Counties of 33 counties

Social Media

Twitter: <https://twitter.com/nmdhsem>
 Facebook: <https://www.facebook.com/nmdhsem>
 Website: <http://www.nmdhsem.org/>

General Summary

For year to date in 2019, NOAA reports ¹⁵ 126 severe weather reports including 17 tornadoes, 68 hail reports and 41 wind reports.

Tornado Summary

Jun 4

- Otero County EMA reports a small tornado struck outside of town near Alamagordo. Pending official review [Source](#)

Mar 7

- Ironworks Fire
 - [FEMA FM-5281](#) Declared on Thursday, March 7, 2019 - 19:00
 - Map: <https://www.facebook.com/nmdhsem/photos/a.1037399226293007/2380570628642520/?type=3&theater>
 - Counties: Valencia

May 26

- Tornado Outbreak

<u>County</u>	<u>EF</u>	<u>Location</u>
○ Roosevelt	EF2	SE of Dorato NE of Rogers

¹⁵ <https://www.spc.noaa.gov/climo/online/monthly/states.php?month=00&year=2019&state=NM>

North Carolina 5 of 100 counties

Social Media

Twitter: <https://twitter.com/NCEmergency>

Facebook: <https://www.facebook.com/NCEmergency/>

Website: <https://www.ncdps.gov/ncem>

General Summary

Over the weekend of June 8 and 9, areas of North Carolina experienced over 12 inches of rain. Flood waters are highest it's been in some areas since severe flooding of 1949. North Carolina Governor Roy Cooper held a press conference to address the flooding across the state and reported that over 80 swift water rescues have been performed. The Catawba river is cresting over Lookout Shoals dam [source](#) . Emergency declarations have been made for Alexander, Caldwell and Catawba counties. Multiple roads and bridges are closed across the state due to flooding including US401 in NE Wake County/South Franklin county, a road collapse in Hickory, and Woodland Hills Drive near Icard. USGS Flood [Map](#)

Tornado Summary

On April 19, 2019, there were a total of 12 tornadoes in North Carolina including 1 EF2, 6 EF1, and 5 EF0 tornadoes.

Apr 19

- Tornado Outbreak

<u>County</u>	<u>EF</u>	<u>Location</u>
Orange	EF2	Whitecross
Moore	EF1	Robbins in NW Moore County
Chatham	EF1	Siler City
Sampson/Johnson	EF1	Spivey's Corner to Meadow
Nash/Halifax	EF1	Rocky Mount to W. of Whitakers
Edgecombe/Halifax	EF1	Sunnyside - Battleboro - Whitakers
Halifax/Northampton	EF1	SW of Weldon to Greenville County VA
McDowell	EF0	N of Ashford
Gaston/Lincoln	EF0	N of Lincolnton
Alexander	EF0	N of Hiddenite
W Northampton	EF0	4 m W of Gaston
Northampton	EF0	Jackson to Margarettsville

North Dakota - 2 Counties of 53 counties

Social Media

<https://twitter.com/NDDDES>

<https://www.facebook.com/NDRResponse/>

General Summary

For year to date in 2019, NOAA reports ¹⁶ 43 severe weather reports including 3 tornadoes, 22 hail reports and 18 wind reports. Flood [Map](#)

Tornado Summary

May 24

- Tornado Outbreak

<u>County</u>	<u>EF</u>	<u>Location</u>
○ Barnes	EF1	Leal
○ Barnes	EF0	Rogers
○ Steele	EF0	NW of Hope

Ohio - 21 counties of 88 counties

General Summary

On June 10, 2019 Governor Mike DeWine announced he will be seeking assistance from the government for the 21 tornadoes that touched down. [source](#) At least 5 million people lost power in May due to tornadoes that tore across Ohio. 2 shelters were setup in Western Ohio due to the severe storms. At least 385 people were treated at hospitals due to storm-related injuries.

On April 8, 2019, a federal disaster declaration was approved for 20 counties impacted by severe storms, flooding, and landslides between February 5-13, 2019. Approved for public assistance were Adams, Athens, Belmont, Brown, Gallia, Guernsey, Hocking, Jackson, Jefferson, Lawrence, Meigs, Monroe, Morgan, Muskingum, Noble, Perry, Pike, Ross, Scioto, Vinton, and Washington counties. [source](#)

Flood [map](#)

Tornado Summary

During the tornado outbreak of May 27-28, 2019, there were 21 tornadoes reported across Ohio including one F4, three F3, and three F2 tornadoes. Damage summaries from the National Weather Service can be found [here](#). Below is a summary is only for the F4 Brookville tornado.

The largest tornado initially touched down just west of Brookville. Numerous homes suffered significant roof damage and removal, with exterior wall collapse, and complete garage destruction. The tornado then carved a path east through Trotwood where damage consistent with EF2 wind speeds was widespread, with some homes sustaining damage consistent with EF3 wind speeds which again featured roof removal and exterior wall collapse. This was particularly true on the south

¹⁶ <https://www.spc.noaa.gov/climo/online/monthly/states.php?month=00&year=2019&state=ND>

side of Westbrook Road. A large number of homes and apartment complexes were impacted further east in Trotwood, most of this damage consistent with high-end EF2 wind speeds.

The tornado continued southeast through Dayton and Northridge, crossing I-75 and into the Old North Dayton Area, where heavy damage continued to homes and businesses. Based on additional information received via Dayton Skywarn and the Red Cross, it is believed the tornado continued further to the southeast, causing damage in a subdivision north of Burkhardt Road. The roof of an apartment building on Dodge Ct was removed. This is the final known damage caused by this tornado.

The survey team noted hundreds of homes, businesses, and apartment complexes and thousands of trees along the path sustaining moderate to heavy damage, and in particular the width of the tornado along much of this path was up to or perhaps in excess of a 1/2 mile which led to an extremely devastating damage footprint across Montgomery County.

Apr 8 (Feb 5 - Feb 13)

- Ohio Severe Storms, Flooding, And Landslides (DR-4424)
 - [FEMA DR-4424](#) Declared on Sunday, April 7, 2019 - 20:00
 - Map: https://gis.fema.gov/maps/dec_4424.pdf
 - Counties: Adams, Athens, Belmont, Brown, Gallia, Guernsey, Hocking, Jackson, Jefferson, Lawrence, Meigs, Monroe, Morgan, Muskingum, Noble, Perry, Pike, Ross, Scioto, Vinton, and Washington

May 27

- Tornado Outbreak

<u>County</u>	<u>EF</u>	<u>Location</u>
○ Montgomery	EF4	Brookville to Riverside
○ Montgomery, Greene	EF3	Riverside to Beaver creek to N of Xenia
○ Mercer	EF3	Celina
○ Dark/Miami	EF3	West Milton
○ Montgomery	EF2	ESE of Englewood
○ Greene	EF1	NE of Jamestown
○ Darke	EF1	S of Hollansburg
○ Darke	EF1	New Madison
○ Auglaize	EF0	SSE of Uniopolis
○ Miami	EF0	S of Troy
○ Auglaize	EF0	Waynesfield
○ Miami	EF0	Elizabeth Township
○ Montgomery, Miami	EF0	Phillipsburg
○ Hardin	EF0	NE of Belle Center

May 28

- Tornado Outbreak

<u>County</u>	<u>EF</u>	<u>Location</u>
○ Greene	EF2	NE of Jamestown
○ Hocking	EF2	NE of Laurelville
○ Auglaize	EF1	W of Wapakoneta
○ Perry, Muskingum	EF1	Roseville

- Pickaway EF1 S of Tarlton
- Pickaway EF0 SE of Circleville
- Vinton EF0 NW of Zaleski

Oklahoma - 77 Counties of 77 counties

Social Media

Twitter: <https://twitter.com/okem>

Facebook: <https://www.facebook.com/OKEmergency/>

Website: <https://www.ok.gov/OEM/>

General Summary

For year to date in 2019, NOAA reports ¹⁷ 451 severe weather reports including 85 tornadoes, 175 hail reports and 191 wind reports. Some parts of the state have seen 10 inches of rain in a 48 hour period. Officials believe floods have had an impact on at least 1,000 homes in some way, especially in northeastern Oklahoma around the swollen Arkansas River, state Department of Emergency Management spokeswoman Keli Cain said. Flood watches and warnings were in effect Friday for large portions of northern Oklahoma. By the afternoon, Gov. Kevin Stitt had amended an earlier executive order to declare a state of emergency in all 77 counties across the state due to the severe weather. Gov. Kevin Stitt has declared a state of emergency in all 77 counties across the state due to the severe weather. [source](#) USGS flood [Map](#)

Tornado Summary

May 7

- **Severe Storms, Straight-line Winds, Tornadoes, And Flooding (DR-4438)**
 - [FEMA DR-4438](#) Declared on Friday, May 31, 2019 - 20:00
 - Map: https://gis.fema.gov/maps/dec_4438.pdf
 - Counties: Muskogee, Tulsa, Wagoner

May 20

- Tornado Outbreak

<u>County</u>	<u>EF</u>	<u>Location</u>
○ Greer	EF2	Western Mangum
○ Cherokee, Delaware	EF2	SW of Peggsto NW of Kansas
○ Okmulgee	EF1	E of Winchester
○ Mayes	EF1	S of Salina
○ Delaware	EF1	W of Leach to NW of Kansas

May 21

- Tornado Outbreak

<u>County</u>	<u>EF</u>	<u>Location</u>
○ Pottawatomie	EF2	E of Dale
○ McClain, Cleveland	EF1	Noble
○ Creek	EF1	NW of Sapulpa

¹⁷ <https://www.spc.noaa.gov/climo/online/monthly/states.php?month=00&year=2019&state=OK>

○ Tulsa	EF1	Tulsa
○ Cleveland	EF1	NW of Stella
○ Cleveland	EF1	NE of Norman
○ Cleveland	EF0	SSE of Lake Stanley Draper
○ Lincoln, Pottawatomie	EF0	ENE of Aydelotteto, ESE of Meeker
○ Tulsa	EF0	Tulsa
○ Tulsa	EF0	NNE of Owasso

May 22

- Tornado Outbreak

<u>County</u>	<u>EF</u>	<u>Location</u>
○ Delaware	EF2	Jay to E of Grove
○ Okfuskee	EF1	SE of IXL
○ Okfuskee	EF1	Okfuskee
○ Okfuskee	EF1	E of Okemah
○ Okfuskee, Okmulgee	EF1	ENE of Okemah
○ Craig	EF1	W of Bluejacket
○ Ottawa	EF1	WNW of Cardin
○ Mayes	EF1	NE of Pryor
○ Mayes	EF1	Salina

May 23

- Tornado Outbreak

<u>County</u>	<u>EF</u>	<u>Location</u>
○ Beaver, Ellis, Harper	EF3	NNE of Follett to SSW of Laverne
○ Craig, Delaware	EF1	N of Ketchum

May 25

- Tornado Outbreak

<u>County</u>	<u>EF</u>	<u>Location</u>
○ Canadian	EF3	Southern El Reno

May 25

- Tornado Outbreak

<u>County</u>	<u>EF</u>	<u>Location</u>
○ Creek	EF1	N of Bristow
○ Creek	EF1	SW of Kellyville
○ Creek, Tulsa	EF1	Sapulpa
○ Creek, Tulsa	EF1	SW of Sapulpa to Jenks
○ Tulsa	EF1	NE of Broken Arrow
○ Mayes	EF0	E of Salina

Oregon - 5 Counties of 36 counties

General Summary

For year to date in 2019, NOAA reports ¹⁸ 2 severe weather reports, both were tornadoes. On May 28, 2019, for the first time since 2005 witnesses caught sight of a funnel cloud appearing to form over several minutes, reporting the sighting. After looking into the incident and analyzing public video,

¹⁸ <https://www.spc.noaa.gov/climo/online/monthly/states.php?month=00&year=2019&state=OR>

NWS said that a very weak tornado touched down briefly in the area around 4 p.m., 8 miles west-northwest of Sprague River, according to RADAR. No damage or injuries were reported due to the tornado.

No streams currently in flood stage USGS Flood [Map](#).

May 2 (Feb 23-Feb26)

- Oregon Severe Winter Storms, Flooding, Landslides, And Mudslides (DR-4432):
 - [FEMA DR-4432](#) Declared on Wednesday, May 1, 2019 - 20:00
 - Map: https://gis.fema.gov/maps/dec_4432.pdf
 - Counties: Coos, Curry, Douglas, Jefferson, Lane

Pennsylvania - 6 Counties of 67 counties

Social Media

Twitter: <https://twitter.com/ReadyPA>

Facebook: <https://www.facebook.com/BeReadyPA/>

Website: http://www.pema.state.pa.us/portal/server.pt/community/pema_home/4463

General Summary

For year to date in 2019, NOAA reports ¹⁹ 460 severe weather reports including 31 tornadoes, 116 hail reports and 313 wind reports.

USGS Flood [Map](#).

Tornado Summary

The National Weather Service said Wednesday at four tornadoes touched down during strong storms that raked across the state on May 28 and May 29, bringing heavy rain and high wind. In a housing development in Morgantown, more than a dozen homes suffered significant structural damage from the storm. [source](#) An EF0 storm with winds topping out at 80 mph also struck Lower Milford and Milford townships. Montgomery county was hardest hit.

May 28

- Tornado Outbreak

<u>County</u>	<u>EF</u>	<u>Location</u>
○ Lancaster, Berks	EF2	Morgantown
○ Bradford	EF1	ENE of Ulster Township
○ Lackawanna	EF1	SW of Waverly Township
○ Indiana	EF0	Penn Run
○ Wyoming	EF0	Falls Township

May 29

- Tornado Outbreak

<u>County</u>	<u>EF</u>	<u>Location</u>
○ Fulton	EF1	Wells Tannery area
○ Perry	EF1	ESE of Newport

¹⁹ <https://www.spc.noaa.gov/climo/online/monthly/states.php?month=00&year=2019&state=PA>

○ Dauphin	EF1	Matamoras
○ Tioga	EF0	ESE of Whitneyville
○ Lehigh, Bucks	EF0	Lower Milford Township
○ Sullivan	EF0	Dushore

South Carolina - 0 Counties of 46 counties

Social Media

Twitter: <https://twitter.com/SCEMD>

Facebook: <https://www.facebook.com/SCEMD>

Website: <https://www.scemd.org/>

General Summary

There are no state or federal disaster declarations for South Carolina in 2019. For year to date in 2019, NOAA reports ²⁰ 183 severe weather reports including 12 tornadoes, 10 hail reports and 161 wind reports.

Tornado Summary

On March 3, 2019, an EF2 tornado struck Edgefield. Extensive tree damage occurred along the track of the tornado. At the intersection of Woodlawn Road and Highway 230 there was damage to a convenience store. A couple of the gas pumps were blown over and there was damage to the gas station awning. The most extensive damage to structures occurred near the Morgana Community along Woodlawn Road. Several structures were impacted by fallen trees and large branches. Several homes had damage to roof including shingles, fascia and trim. A tree fell across a pick-up truck crushing the truck bed. Numerous power lines were downed along Woodlawn, Highway 230 and Briggs Road. [source](#)

Mar 3

- Tornado Outbreak

<u>County</u>	<u>EF</u>	<u>Location</u>
○ Edgefield	EF2	Edgefield
○ Lexington	EF1	Red Bank SE of Gilbert
○ Lexington	EF1	Lexington
○ Richland	EF1	Columbia near Saluda River
○ Ft Jackson	EF1	St. Jackson

April 13

- Tornado Outbreak

<u>County</u>	<u>EF</u>	<u>Location</u>
○ Greenville County	EF1	ENE of Rocky Bottom to SSW Cedar Mtn

²⁰ <https://www.spc.noaa.gov/climo/online/monthly/states.php?month=00&year=2019&state=SC>

Tennessee - 57 Counties of 95 counties

Social Media

Twitter: https://twitter.com/t_e_m_a

Facebook: <https://www.facebook.com/TNDisasterInfo>

Website: <https://www.tn.gov/tema.html>

General Summary

For year to date in 2019, NOAA reports²¹ 98 severe weather reports including 7 tornadoes, 18 hail reports and 73 wind reports. USGS Flood [Map](#).

Tornado Summary

Apr 17 (Feb 19 - Apr 17)

- Tennessee Severe Storms, Flooding, Landslides, And Mudslides (DR-4427)
 - [FEMA DR-4427](#) Declared on Tuesday, April 16, 2019 - 20:00
 - Map: https://gis.fema.gov/maps/dec_4427.pdf
 - **Counties:** Anderson, Bedford, Bledsoe, Blount, Carter, Claiborne, Clay, Cocke, Coffee, DeKalb, Decatur, Dickson, Dyer, Fentress, Gibson, Giles, Grainger, Greene, Hamblen, Hamilton, Hancock, Hardin, Hawkins, Hickman, Houston, Humphreys, Jackson, Jefferson, Johnson, Knox, Lake, Lauderdale, Lawrence, Lewis, Lincoln, Loudon, Marion, Marshall, McNairy, Moore, Morgan, Obion, Overton, Perry, Rhea, Roane, Robertson, Scott, Sequatchie, Sevier, Smith, Tipton, Unicoi, Union, Van Buren, Warren, Wayne

Texas - 26 Counties of 254 counties

Social Media

Twitter: <https://twitter.com/TDEM>

Facebook: <https://www.facebook.com/TNDisasterInfo>

Website: <http://www.dps.texas.gov/dem/>

General Summary

In 2019 NOAA reports²² 1,235 Severe weather reports for Texas including 153 Tornadoes, 604 Hail reports and 478 Wind reports. In the past 90 days 26 Counties have been impacted by flooding and tornadoes. 19 Counties had Tornadoes, including three EF3 and four EF2 and 8 Counties are experiencing Flooding. Counties impacted by Tornado: Coleman, Concho, Denton, Ector, Midland, Fannin, Franklin, Hale, Lipscomb, Roberts, Rockwall, Runnels, Schleicher, Smith, Tarrant, Taylor,

²¹ <https://www.spc.noaa.gov/climo/online/monthly/states.php?month=00&year=2019&state=TN>

²² <https://www.spc.noaa.gov/climo/online/monthly/states.php?month=00&year=2019&state=TX>

Tom Green, Tyler, Jasper, Van Zandt, Wood. Counties impacted by Flooding: Ft. Bend, Matagorda, Harris, Austin, Lexington, Brazoria, Lavaca

Flooding Summary

As of Jun 6, 12:30 EDT Eight counties and 23 stream gauges are in flood in Texas. Amtrak announced that flooding is forcing the passenger railroad to suspend service between St. Louis and Fort Worth Texas until June 7²³. Emergency management officials from Matagorda and Wharton Counties have reported street and home flooding. There have been multiple vehicle water rescues within Bay City and Van Vleck areas. There has been additional reports from the public and the Department of Transportation of street flooding in Matagorda, Wharton, and Fort Bend Counties²⁴. 10 to 12 inches of rain has already fallen. In Harris County (Central City) and Lavaca County Texas, about 45 homes were flooded in the two communities during the historic rise of the Arkansas River, and about 500 homes were flooded in Fort Smith. USGS Flood [Map](#)

Tornado Summary

May 18

- **Tornado Outbreak**

<u>County</u>	<u>EF</u>	<u>Location</u>
○ Concho, Runnels	EF3	SSW of Lowake to Northwestern Baling
○ Runnels	EF3	NE of Benoit
○ Coleman	EF3	NW of Coleman
○ Schleicher	EF2	N of Eldorado
○ Tom Green	EF2	SW of San Angelo
○ Tom Green	EF2	San Angelo
○ Taylor	EF2	Western Abilene
○ Smith	EF1	NW of New Chapel Hill

May 19

- Tornado Outbreak

<u>County</u>	<u>EF</u>	<u>Location</u>
○ Tyler, Jasper	EF1	SE of Town Bluff
○ Jasper	EF1	SW of Town Bluff

May 20

- Tornado Outbreak

<u>County</u>	<u>EF</u>	<u>Location</u>
○ Ector, Midland	EF3	SE of Odessa

May 23

- Tornado Outbreak

<u>County</u>	<u>EF</u>	<u>Location</u>
○ Lipscomb	EF3	NNE of Follett to SSW of Laverne
○ Roberts, Lipscomb	EF2	NW of Canadian
○ Roberts	EF1	N of Pampa
○ Roberts	EF0	NNE of Pampa
○ Lipscomb	EF0	WSW of Lipscomb

²³ <https://www.keranews.org/post/flooding-forces-amtrak-suspend-service-between-fort-worth-st-louis>

²⁴ <https://www.star-telegram.com/news/local/community/fort-worth/article231097798.html>

May 23

- Tornado Outbreak

<u>County</u>	<u>EF</u>	<u>Location</u>
○ Hale	EF2	N of Plainview

May 29

- Tornado Outbreak

<u>County</u>	<u>EF</u>	<u>Location</u>
○ Van Zandt	EF2	Kemp to Mabank
○ Van Zandt	EF2	WSW of Canton
○ Wood, Franklin	EF2	E of Winnsboro
○ Van Zandt	EF1	W of Canton
○ Van Zandt	EF1	NE of Canton
○ Tarrant	EF1	SSE of Haslet
○ Tarrant	EF0	SE of Eagle Mountain
○ Denton	EF0	SW of Krum
○ Rockwall	EF0	E of Rockwall
○ Van Zandt	EF0	SSW of Canton
○ Van Zandt	EF0	NE of Canton
○ Wood	EF0	SW of Yantis
○ Fannin	EF0	NW of Leonard

Washington - 9 Counties of 39 counties

Social Media

Twitter: <https://twitter.com/waEMD>

Facebook: <https://www.facebook.com/WashEMD>

Website: <https://mil.wa.gov/emergency-management-division>

General Summary

For year to date in 2019, NOAA reports ²⁵ 2 severe weather reports, one hail and one wind report. USGS Flood [Map](#)

Tornado Summary

Mar 4 (Dec 10 - Dec 24)

- Severe Winter Storms, Straight-line Winds, Flooding, Landslides, Mudslides
 - [FEMA DR-4418](#) Declared on Sunday, March 3, 2019
 - Map: https://gis.fema.gov/maps/dec_4418.pdf
 - Counties: Clallam, Grays Harbor, Island, Jefferson, Mason, Pacific, Snohomish, Whatcom

²⁵ <https://www.spc.noaa.gov/climo/online/monthly/states.php?month=00&year=2019&state=WA>

Response and Recovery efforts

The information provided in this section does not reflect all disaster response activities for the events listed in this report, but is a high level summary of a few of the national response organizations activities.

- CrisisCleanup
 - OK (Jun 11) Home Cleanup Hotline for OK storms, tornadoes and floods is extended through June 21, 2019 [source](#)
 - OH (Jun 11) Home Cleanup Hotline for OH tornadoes extended through Jun 21 [source](#)
 - LA (May 4) Home Cleanup Hotline for Rustin, Louisiana was open until May 17, 2019
 - IA, NE (Apr 25) Home Cleanup Hotline for IA, NE flooding was open until May 3 [source](#)
- Convoy of Hope - (Jun 6, 2019) Since May 23, Convoy of Hope's Disaster Services team has served 50 communities across five states (AR, OK, MO, OH, KS). These communities have either been affected by tornadoes or flooding. Some have even had their water systems compromised due to extreme flooding. A Convoy of Hope team is currently deployed to Dayton, Ohio, where they are managing and distributing resources to areas damaged by a tornado. In addition, we are still sending loads to locations in Arkansas and Missouri to assist with flooding. [source](#)
- All Hands and Hearts - (Jun 10, 2019) Supporting Muck-out in Oklahoma (OK) [source](#)
- ITDRC (Jun 6, 2019) Deployed and providing assistance to impacted communities [map](#)
- Team Rubicon
 - WI (Mar 21, 2019) Deployed to WI after flooding [source](#)
 - NE (Mar 30, 2019) Deployed to NE after flooding [source](#)
- Operation BBQ Relief
 - KS (Jun 1, 2019) Linwood, KS - Provided 2,000 meals after tornado (KS) [source](#)
 - OH (May 30, 2019) Dayton, OH - Provided 15,172 meals over 6 days [source](#)
 - TX (Apr 13, 2019) Franklin, TX - Provided 1,960 meals over 3 days [source](#)
- Presbyterian Disaster Assistance
 - MO, IA, NE, KS - National response teams have been deployed [source](#)
- Salvation Army
 - OH (Jun 7, 2019) Dayton Ohio Resource Center launched [source](#)
 - AR, OK (Jun 6, 2019) Canteen service deployed after flooding [source](#)
- Southern Baptists
 - OH (May 30, 2019) 40 volunteers deployed following tornadoes [source](#)
 - MO (May 28, 2019) Jefferson City - tree and debris removal [source](#)
 - NE, IA (May 2, 2019) Deployed and working 1,400 mudout requests [source](#)

Special Needs and vulnerable populations

- Iowa: About 80 people with intellectual disabilities were transferred Tuesday from the Glenwood Resource Center in western Iowa to a similar institution 150 miles away, in Boone County. The Glenwood Resource Center, along with the rest of the town of Glenwood, is facing a drastic water shortage because Missouri River floodwaters inundated the town's treatment plant. [source](#)
- Iowa: In March, the Governor of Iowa reported that about 80 people with intellectual disabilities were transferred from the Glenwood Resource Center in western Iowa to a similar institution 150 miles away, in Boone County. The Glenwood Resource Center, along with the rest of the town of Glenwood, is facing a drastic water shortage because Missouri River floodwaters inundated the town's treatment plant. [Source](#)
- Alabama: Home for disabled in Huntsville, AL is fighting flooding and mold remediation <https://whnt.com/2019/03/01/home-for-disabled-in-huntsville-damaged-by-flooding/>

Maps and Reports

- Open Shelters [Map](#)
- NWS Spring Flood [Map](#) See Appendix Page 42
- NOAA Annual Severe Weather [Map](#) See Appendix Page 41

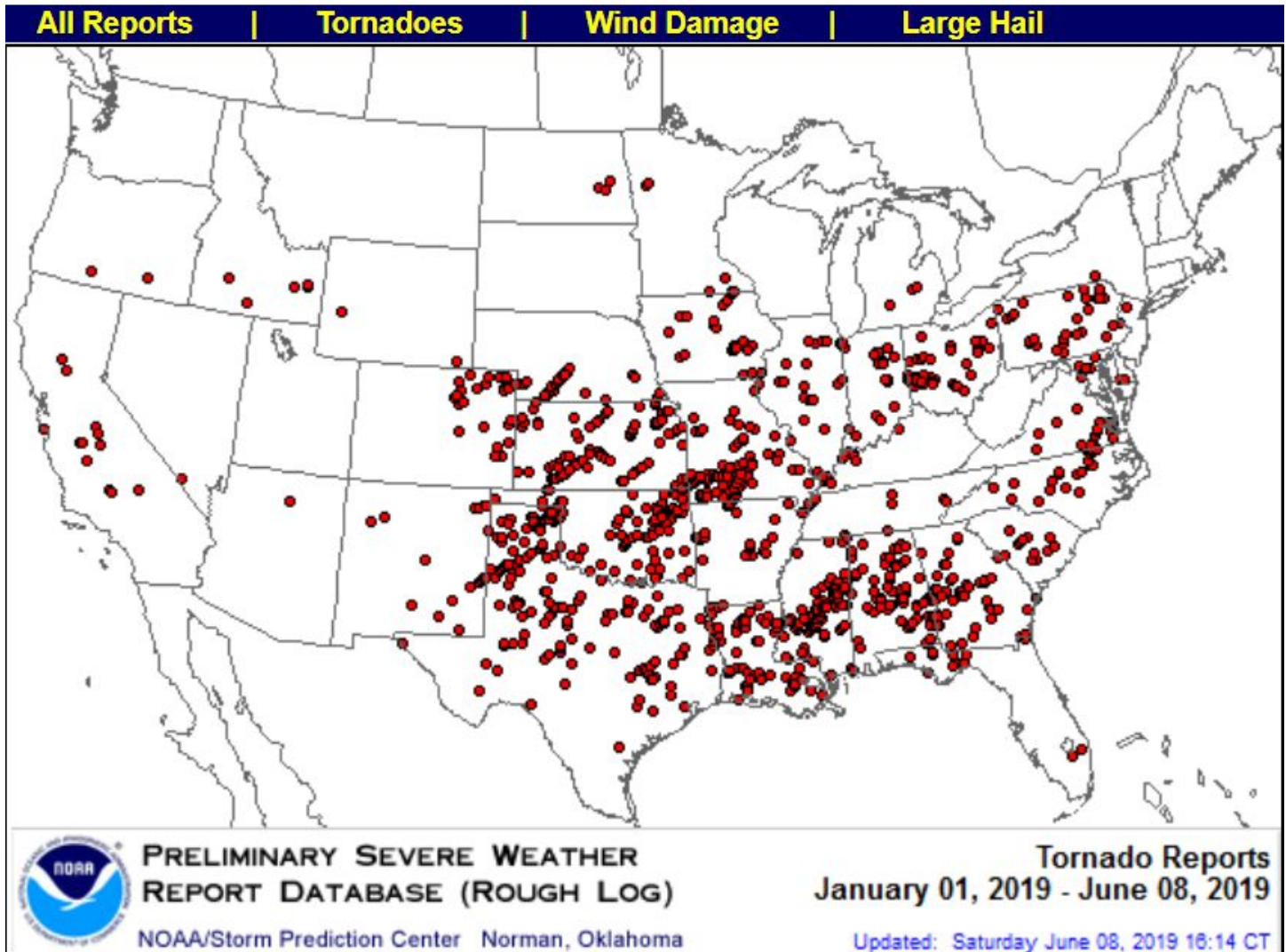
Volunteers Reporting

Chris, Cat, Crystal, Alice

Annual Severe Weather Report Summary 2019

[RETURN TO OVERVIEW PAGE]

** Data is preliminary and subject to revision*



2019 U.S. Spring Flood Outlook

