

Humanity Road – United States - California

Activation: Oroville Dam & Spillway, Report No 2

Publication Date: February 13, 2017



Over 180,000 people have been evacuated from Butte, Yuba, and Sutter Counties in California beginning on Feb 12, 2017 following a breach in a spillway of the Oroville Dam. This Situation Report No 2 includes information from social media for Feb 12-13 and includes useful website and social media links, useful numbers, information on evacuation shelters for people and animals, and other situational information.

A live situation report can be seen on the Humanity Road website:

<http://humanityroad.org/oroville-spillway-situation-report/>

Twitter Handles

[@HumanityRoad](#)
[@DisasterAnimals](#)
[@jAidDog](#)

Facebook Pages

[Humanity Road](#)
[Animals in Disaster](#)

Contact: support@humanityroad.org

About Humanity Road: Founded in 2010 as a 501(c)(3) non-profit corporation, [Humanity Road](#) is a leader in the field of online disaster response. Through skilled and self-directed work teams, Humanity Road and its network of global volunteers aim to provide the public and disaster responders worldwide with timely and accurate aid information. Providing such information helps individuals survive, sustain, and reunite with loved ones. For more information, please visit www.humanityroad.org or call 1-800-931-1951. [Support our work](#), CFC 28433.

support@humanityroad.org

www.humanityroad.org

[Support our work](#)

Situation Report: Oroville Dam, California - February 2017

Situation Report No 2 – period covered: Feb 12-13, 2017

Prepared by: [Humanity Road](#) / [Animals in Disaster](#) **Follow:** [@Humanityroad](#) / [@Disasteranimals](#) / [@jAIDDog](#)

Situation Overview

Background

More than 180,000 people are under evacuation orders which also includes "all Yuba County on the valley floor" and the city of Marysville. Evacuations have been ordered for low levels of Oroville, California, and several areas downstream from Lake Oroville because of erosion on the Oroville Dam's auxiliary spillway, according to the Butte County Sheriff's Office.

[Source](#)

Oroville Dam is an earthfill [embankment dam](#) on the [Feather River](#) east of the city of [Oroville, California](#) in the [United States](#). At 770 feet (230 m) high, it is the tallest dam in the U.S.^[7] and serves mainly for water supply, hydroelectricity generation and flood control. The dam impounds [Lake Oroville](#), the second largest man-made lake in the state of California, capable of storing more than 3.5 million [acre-feet](#) (4.4 km³),^[8] and is located in the [Sierra Nevada](#) foothills east of the [Sacramento Valley](#). [Via Wikipedia](#)

Earlier this week, chunks of concrete flew off the nearly mile-long spillway, creating a 200-foot-long, 30-foot-deep hole. Engineers don't know what caused the cave-in that is expected to keep growing until it reaches bedrock. [source](#)

Significant Updates (most recent first)

Feb 13:

- Oroville - Gas station by Feather Falls Casino is down to Premium gas only and running low [source](#)
- The California National Guard is transporting blankets and cots to temporary shelters for evacuated residents. [Source](#) They are also prepared to provide medical support and evacuation if needed. [source](#)
- 12:22 PM All evacuation orders remain in place, says Butte County Sheriff. [source](#)
- 12:19 PM DWR: Releasing over 110,000 CFS via the main Oroville Spillway. Lake level dropping around 8' per day. No water has flown over the emergency spillway at this time. [source](#)
- Yuba Jail inmates were evacuated safely. A list will follow on the County website. [Source](#)
- 10:01 AM Yuba County update: This morning, ALL Yuba County communities on the valley floor are still under Mandatory Evacuation, with the exception of Wheatland, which is under Voluntary Evacuation. The Mandatory Evacuation applies to District

10, Marysville, Linda, Olivehurst, Arboga, and Plumas Lake. Please DO NOT return to those areas until we determine it is safe to do so. We are working to keep people out of harm's way. We understand evacuation orders in Sutter County, Yuba City and Live Oak are also unchanged. [source](#)

- 8:53 AM Efforts are being undertaken to make repairs to both, the primary and emergency spillways. [source](#)
- 8:35 AM DWR engineers and soil technicians are assessing the auxiliary spillway damage now. Updated conditions will be posted as soon as available. [source](#)
- 7:20 AM At 7:00 am Lake Oroville reservoir elevation is 897.55 ft. Reported outflow is 99,804 cfs [source](#)
- WHEATLAND ONLY -- Changed to a Voluntary Evacuation. All other communities still mandatory. [source](#)
- As of Monday at 5:00am local time, approximately 188,000 people are under evacuation orders and evacuations remain in progress. Humanity Road continues to amplify officials and monitor for urgent needs. Potential anticipated urgent needs are stranded motorists, gas station shortages, shelter supplies needed, and identifying misinformation and rumors. Additional rain is forecasted for the already heavily soaked area. Sacramento County which is south of the impact area and suffering under flooding conditions is also an area of concern. Humanity Road began monitoring the Oroville Dam on Friday Feb 10th when the primary spillway was compromised. Helpful official agency social media links were collected in advance of evacuation and guidance from officials and which officials to follow amplified in social media. On Sunday Feb 12, the emergency spillway became compromised and evacuations were ordered for parts of three counties. Due to the heightened risk to downstream communities, and at the request of a California county emergency management agency, the Humanity Road disaster desk was elevated to status Red and a special report was published to our activation partner, as well as our situation report. <http://humanityroad.org/oroville-spillway-situation-report/> .

Feb 12

- 11pm - Oroville update: spillover stopped along auxiliary/emergency spillway around 8pm. Flood warning continues, site/repair eval in the AM. [Source](#)
- The [mass evacuations](#) underway below the Oroville Dam capped a week of frantic efforts to prevent flooding as the reservoir behind America's tallest dam reached capacity and its main spillway was severely damaged.
- People in Sutter County were asked to evacuate on Highway 99/70 south or Highway 20 west and not to go north. [source](#)
- 8:00pm Marysville issued evacuation order for all of Yuba County on the valley floor
- 6:11pm Sutter County issues evacuation [source](#)

Regional and Local Links

support@humanityroad.org

www.humanityroad.org

[Support our work](#)

State Links

12 Feb 8:47 PM - The CHP has deployed additional staff to work with emergency personnel in the Oroville Dam area (Butte, Yuba, & Sutter counties). [Source](#)

California Department of Water Resources [website](#) [@CA_DWR](#) [@CADWR](#) [@DougNorCal](#) [facebook](#)

California Department of Transportation: [@CaltransDistrict3](#) [@CaltransDist3](#) [@CaltransHQ](#)

California Office of Emergency Services [@Cal_OES](#) [@CaliforniaOES](#) [Website](#)

California Fire Department: [@CAL_FIRE](#) [@CALFIRE](#)

California Highway Patrol: [@CHP_HQ](#)

California Department of Fish and Wildlife: [@CaliforniaDFW](#)

Butte County

Butte County Government: [Twitter](#)

Butte County Sheriff [Twitter](#) [Facebook](#)

Butte County Fire Department [Twitter](#)

California Office of Emergency Services [Twitter](#)

Local Links

Oroville, population 15,506, [website](#) [facebook](#)

Thermalito, population 6,646

Biggs, population 1,707 [website](#)

Chico police [twitter](#)

Yuba County

Yuba County Government [website](#) [facebook](#) [Twitter](#)

Yuba City [twitter](#)

Yuba County Office of Emergency Services [Website](#) [Facebook](#)

Sutter County

Sutter County Government [website](#) [facebook](#) [Twitter](#)

Sutter County Office of Emergency Management [website](#) [Facebook](#)

Nevada County

Nevada County Government: [website](#) [twitter](#)

Emergency Numbers

Emergency Phone Numbers

911 - for emergencies. Also if you are elderly or disabled and need help evacuating.

Information Hotlines

- Sutter County numbers: Media Line: 530-268-5869 Information Line: 530-538-7826 [source](#)
- Yuba or Sutter County - call 1-866-916-3566 for information. [source](#)
- Butte County - for questions or evacuation information, call (530) 872-5951. [Source](#)

support@humanityroad.org

www.humanityroad.org

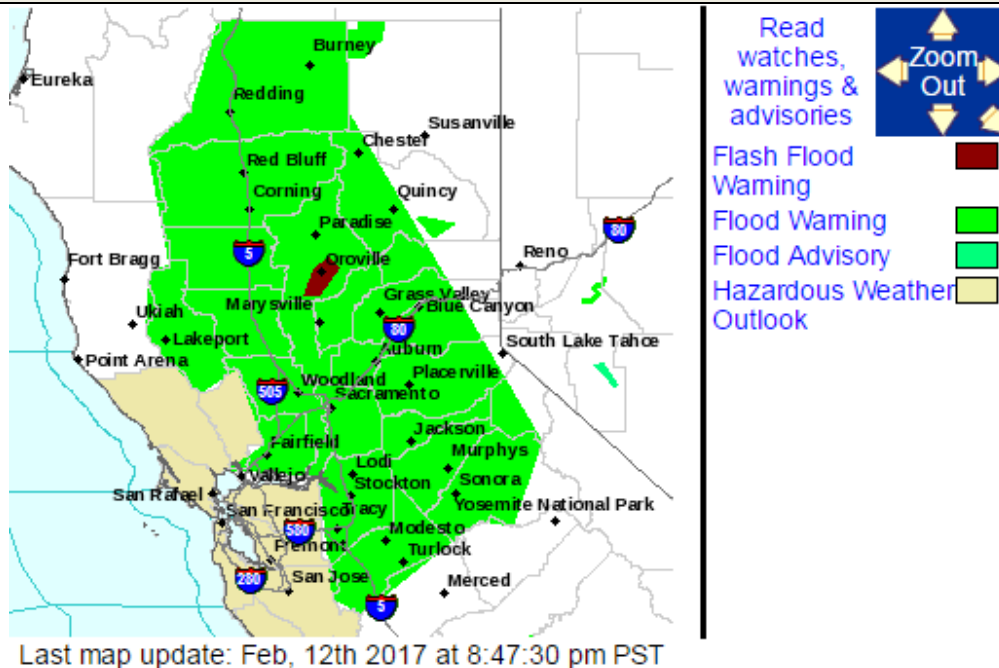
[Support our work](#)

- Check <http://www.buttecounty.net> for list of evacuations shelters, animals shelters, and school closures. [Source](#)

Reunification Numbers

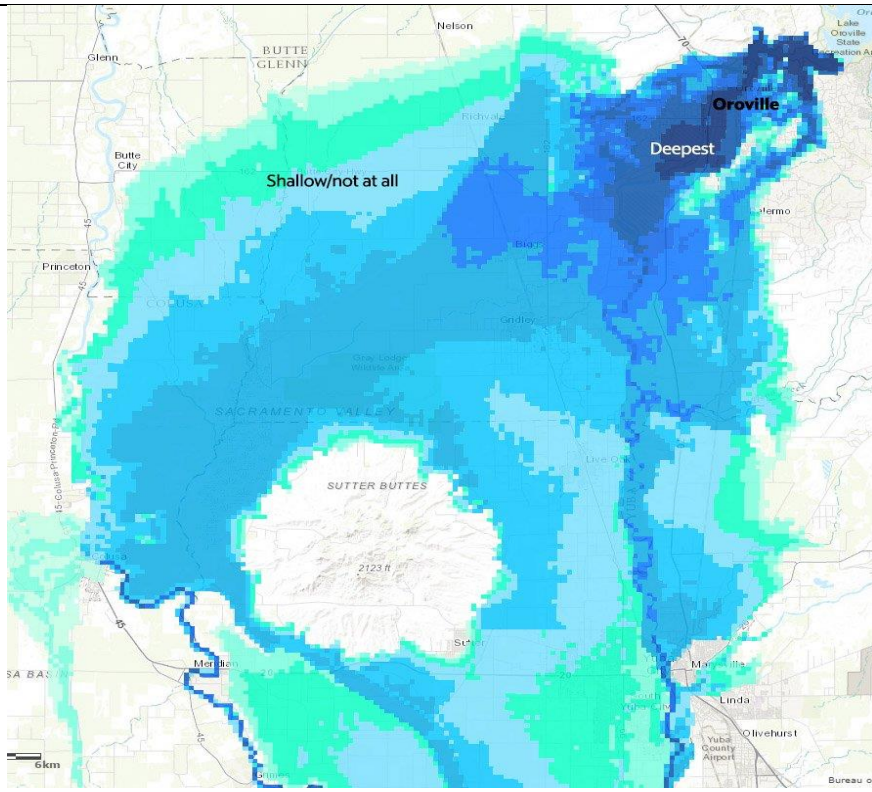
- Please contact the Beale Air Force Base Emergency Family Action Center regarding those sheltered in our facilities, (530) 634-5627. [source](#)

Maps/Situational Awareness



Google map: www.google.com/maps

Feb 13: Graphic from [@sacbee news](#) article on Oroville situation showing possible inundation areas. [Source](#)



Shelters

Red Cross Shelters: [website and map](#), [mobile apps](#)

Butte County

- Feb 12 - Concow Lake campground has evacuee space especially those with large animals. Campground is off Highway 70, 25 miles north of Oroville, turn left at the Concow Road turnoff and proceed 5 miles to the campground. [Source](#)

Chico:

- Feb 13 - East Avenue Church: 1184 East Ave. [source](#) They are doing ok with supplies for now, but are expecting an influx of people who were previously going to sleep in the Walmart parking lot. [source](#)
- Feb 13 - Grace Community Church, 2346 Floral in Chico. RV parking available. [Source](#) They need sleeping bags and snacks and drinks for kids/adults. We are preparing ourselves to receive evacuees. Drop off is in the gym. [source](#)
- Silver Dollar Fairgrounds, 2357 Fair Street [source](#) Feb 13 update: (small animals accepted)(The shelter at Silver Dollar Fairgrounds will remain open tonight. It has capacity for over 1000 people to stay overnight, and there are showers on site). They need donations of food, water, blankets. Dog food, diapers anything! [source](#)
- St. Johns Episcopal Church, 2341 Floral Avenue (small animals accepted if leashed and crated) [source](#)
- Church on the Esplanade 1119 the Esplanade open and currently empty. Accepting evacuees, Corner of E 1st and Esplanade [source](#)

- Neighborhood Church, 2801 Notre Dame Blvd. (no animals inside) Feb 13 update: Needed “Eggs, bread, ham (not bacon), cereal (individual boxes please) toasters, pastries, milk, juice and people willing to scramble eggs. We're planning on starting at 7am so comment if you can show up. Lunch and dinner are being taken care of, as well as breakfast Tuesday. We are out of cots and bedding but have space (no animals!) If anyone has bedding donations, cots, air mattresses, etc they are accepting donations!!! They do not need additional volunteers at this time.” [source](#)

Paradise:

- Paradise Elks Lodge, 1100 Elks Lane, Paradise (no small animals accepted, RVs allowed in Parking Lot)
- Paradise, Alliance Church (CMA), 6491 Clark Road (small animals accepted, RVs allowed in Parking Lot). Feb 13 update: “We need help. We appear to have enough volunteers for now. But we were just notified red cross can’t take over for 12 hours. Please drop your stuff off in the SOUTH circle parking lot. There will be volunteers to take it. Please do not park and bring it in. We need the space.” [source](#)
- Paradise, St. Nicholas Church
- Veterans Memorial Hall, [6550 Skyway, Paradise](#) (no animals accepted)

Colusa County

- Colusa County Fairgrounds, 1303 10th St, Colusa, CA is not an evacuation center. They are offering water, restrooms and parking for people in transit. [source](#)

Glenn County

- Glenn County Fairgrounds, 221 E Yolo St, Orland, CA [source](#) Feb 13 updated: currently housing about 80 people. Plenty of space for people, pets, livestock, and RVs. [source](#)

Nevada County:

- Feb 13, 11:41 AM The Nevada County Fairgrounds is opening a third building for evacuees. The Main Street and Ponderosa buildings are filling up, now the three-wing Northern Mines building will be available as well. Approximately 600 evacuees spent the night at the Fairgrounds. Spokesperson Wendy Oaks stated the RV Park at Gate 4 still has spaces available. The Food Bank of Nevada County has dropped off several pallets of food at the Fairgrounds and the Salvation Army is preparing meals for the evacuees. [source](#) Donation needs: The donation list remains the same: baby and adult diapers, adult underwear, socks, Lysol wipes, women’s/men’s sweatpants and sweatshirts, deodorant, toothpaste/toothbrushes, soap, Chapstick, shampoo, combs and scissors. [source](#)
- Feb 13 - First Baptist church, 1866 Ridge Rd, Grass Valley is full. 200 people were relocated out of the Beale shelter in Marysville to the church. [Source](#) & [Source](#)
- Feb 13: The Fairgrounds is available for evacuees and animals. We are not full, and we have room in our buildings and our RV Park. The Red Cross has notified us that the Salvation Army will be bringing breakfast and lunch to all the evacuees in the morning. However, they are in need of blankets and personal hygiene items, donations are accepted at Gate 1 at the Fairgrounds. for the evacuees. There is plenty of bottled water, so no need for water donations. The Nevada County Veterinary Disaster Response Team (who is overseeing the large animal evacuations) has about 15 large dogs, and they have enough food and supplies for these animals, so there is not a need for food and blankets for them at this time. All prepackaged

snack food, blanket, and small animal pet food donations can be dropped off at Gate 1 at the Fairgrounds, and Red Cross will oversee the distribution. [source](#)

- Feb 13: Nevada County Consolidated Fire has staffed the evacuation center at the fairgrounds with medical staff to assist the evacuees. [source](#)
- The Nevada County Fairgrounds, in Grass Valley at 11228 McCourtney Road, are open to flood evacuees and all animals. For cars (non RVs), go to Gate 1; for RVs, go to Gate 4; for large and small animals, go to Gate 8 [source](#)

Placer County

- Feb 13: Placer County Evacuation Center, 800 All American Pkwy, Roseville requesting activities 4 kids - coloring books, crayons, etc. [source](#) They also need prepackaged food/water, clean blankets/towels, toiletries. [Source](#) Spanish and Punjabi-speaking volunteers are needed. [Source](#) Donations needs are being updated on the [Placer County Facebook page](#).

Sacramento County

- Cal Expo - east gate, 1600 Exposition Blvd, Sacramento. Accepting small pets as well. [Source](#)
- Rio Linda: Sikh Temple, 6221 16th St. (all accepted regardless of faith) [source](#)
- Sacramento: Citrus Heights Community Center, 6300 Fountain Square Dr. [source](#)
- Sacramento: Sikh Temple, 4600 Pell Dr. (all accepted regardless of faith) [source](#)
- Sacramento: Sikh Temple, 7676 Bradshaw Rd (all accepted regardless of faith) [source](#)
- West Sacramento: Sikh Temple, 2301 Evergreen Ave (all accepted regardless of faith) [source](#)

San Joaquin County

- Manteca: Sikh Temple, 4640 Woodward Ave. (all accepted regardless of faith) [source](#)
- Stockton: Sikh Temple, 1930 S Grant St. (all accepted regardless of faith) [source](#)
- Tracy: Sikh Temple, 11770 W. Clover Rd. (all accepted regardless of faith) [source](#)

Sutter County

- Sutter: Sutter High School, 2665 Acacia Ave, Sutter, CA. [source](#)

Tehama County

- Corning: Rolling Hills Casino RV Park, several spaces left and will accept large animals (as of 8:45 PM) [source](#)

Yolo County

- Yolo County Fairgrounds, 1250 East Gum Avenue, Woodland [source](#) Feb 13 update - Fairgrounds are still open and accepting evacuees. ADA-accessible and accepts residents with leashed/crated pets. [source](#)

Yuba County

- Marysville: Beale Air Force Base letting evacuees drive through and offering shelters [source](#) Red Cross shelter, 6000 C Street on base. [source](#) Feb 13 - Beale Air Force Base has received approximately 400 evacuees. Efforts today are to transition those requiring long term and specialized care to a Red Cross designated location. Our efforts are being coordinated through the California Office of Emergency Services. [source](#)

- Marysville: Alcouffe Center, 9185 Marysville Rd. [source](#)

Hospitals

Status of Hospitals:

Feb 13:

- Woodland - Close to 400 evacuees here in woodland. 97 children, 119 mental health patients that were evacuated from 3 hospitals in Yuba City [source](#)
- Live Oak - MMHD will be accepting 19 patients from the River Valley Care Center in Live Oak due to the Oroville evacuations. [source](#)
- Oroville Hospital official says they are only admitting emergency cases due to flooding concerns. Not likely hospital will have to be closed. [Source](#) Oroville Hospital is sheltering in place. They moved patients up to 2nd floor as a precaution, but the hospital is on high ground and not in the inundation zone. [source](#)

Feb 12:

- Enloe Medical Center in Chico is not evacuating and is open. [source](#)
- Rideout Hospital in Marysville has 150+ patients and extra staff in case of evacuation notice. [source](#)

Hospital Locations:

[Sutter County Hospitals](#)

[Butte County Hospitals](#)

[Yuba County Hospitals](#)

Vulnerable Populations

Assistance for Vulnerable Populations

Feb 13:

- 7:30 AM - Disabled Butte County residents who need assistance evacuating in Butte County can call (530) 342-0221 for a para-transport. [source](#)
- Unconfirmed report that people living in "14 Forward", temporary housing for the homeless in Marysville, were told to walk out. They had no cars to evacuate and were given no transportation options. [Source](#)
- Far Northern Regional Center (FNRC) is assisting their clients who are evacuees. Please let them know your first and last name, where you are, a contact number, and if you have your medications. Call 530-895-8633 or email webmaster@farnorthernrc.org. FNRC assists people with developmental disabilities. [source](#)

Nursing Homes in Oroville:

Shadowbrook Health Care

#1 Gilmore Lane

Oroville, CA 95966

Phone: (530) 534-1353

Fax: (530) 534-0632

<http://shadowbrookhc.com/links.php>

Oroville Hospital Post Acute Center

1000 Executive Parkway

Oroville, CA 95966

Tel (530) 533-7335

Fax (530) 533-8715

Prestige Assisted Living

400 Executive Parkway

Oroville, California 95966

Phone: 530.534.8160

Fax: 530.534.4679

Pacifica Senior Living Country Crest

55 Concordia Lane Oroville, CA 95966

530-712-3100

<http://bit.ly/2IACh7S>

[@Pacifica_Senior](#)

<http://bit.ly/2lao9q1>

Roseleaf Senior Living and Memory Care

1900 20th St. Oroville, CA 95966

Phone: (530) 538-8200

Fax: (530) 533-5544

<http://www.roseleafcares.com>

Schools

Information on Suspensions:

Feb 13:

- Yuba County School Closure Info for Tuesday - MJUSD, WESD, PLESD, WUHSD all CLOSED [source](#)
- Gridley Unified has canceled school tomorrow for all Gridley schools. Subsequently, Tuesday's bball games vs Sutter have been shifted. [source](#)
- Butte Superintendent of Schools, Tim Taylor, has called closure of all schools on Monday, February 13, 2017. Bangor Union Elementary School District, Biggs Unified School District, Durham Unified School District, Feather Falls Union Elementary School District, Golden Feather Union Elementary School District, Gridley Unified School District, Manzanita Elementary School District, Oroville Elementary School District, Oroville Union High School District, Palermo Union Elementary School District, Pioneer Union Elementary School District and Thermalito Union Elementary School District in Butte County. All of Butte County Office of Education offices and schools in Oroville will also be closed. The following Butte County School Districts are

support@humanityroad.org

www.humanityroad.org

[Support our work](#)

not included in this closure advisory: Chico Unified School District and Paradise Unified School District. [source](#)

Feb 12:

- Chico State Campus will be open tomorrow and classes in session. Students and employees affected by the evacuation should contact their prof/supervisor. [Source](#)

Airports

Flights and Airport Status:

Feb 13:

- 8:53 AM A Temporary Flight Restriction has been enacted for the area of the Oroville Dam as crews conduct continual surveys. This restriction includes recreational drones. [source](#)

Feb 12:

No reports of airport closures

Airports:

[List of airports in California](#)

Roads, Bridges

Feb 13:

- SR 70 in the Feather River Canyon is closed. [Source](#)
- Highway 50 in the Sierra remains closed due to mudslides. [Source](#)
- 9:32 AM Yuba County Road Closures: [source](#)
North Bound 70 @ 18th Street in Marysville
South Bound 99 @ 149th Street
North Bound 99 @ 20th Street
- 8:21am - Latest road closures from Caltrans [source](#)
- Traffic alert: 7:05 a.m. Highway 99 is closed at Durham Pentz Road, and Highway 70 is closed at 149. #OrovilleDam" [source](#)

Feb 12:

- Caltrans is out on the roads, assisting stranded motorists on highways 70, 99, & 113. [Source](#)
- Evacuation for Yuba & Sutter counties should use southbound 70 & southbound 99. [Source](#)
- SB 149 at 99, SB 70 at 149, EB 162 at 99, & 149 at Openshaw Rd. are all CLOSED. [Source](#)

Road Condition Websites:

[Caltrans QuickMap](#)

[California Road Conditions, Caltrans](#)

Communications

Status of Communication Networks

Feb 12: No reports of communications outages, however using text messages can save on bandwidth.

Water

Status of Water Supply

Power & Gas

Status of Power & Gas

- Feb 13: at 8:53 AM Crews are actively removing debris and sediment from waterways, in an effort to reactivate the Hyatt power plant. <http://bit.ly/2l0sc64>

Red Cross

Offices & Contact Information

American Red Cross Gold Country Region
1565 Exposition Blvd, Sacramento, CA 95815
Phone: (916) 993-7070
[Website](#), [Twitter](#), [Facebook](#)

Pictures and Videos

Media

Feb 13: [Photo](#) - Gas station in Marysville out of gas
Feb 10 Youtube amateur aerial [Video](#)
Feb 10 video via @ABC [Video1](#)
Feb 9 via @AP [Photo2](#)
File photo [Photo1](#)
Livestream News [Link](#)

Facebook

Facebook Accounts of Interest

[Caltrans District 3](#)
[Beale Air Force Base](#)
[Butte County Sheriff](#)
[County of Sutter Office of Emergency Management](#)
[Yuba County Office of Emergency Services](#)
[Placer County](#)

Community Help Groups

support@humanityroad.org

www.humanityroad.org

[Support our work](#)

Twitter

Event Hashtags:

#OrovilleDam #OrovilleSpillway #Spillway

Location Hashtags:

#Oroville #Marysville #Yuba #Sutter #FeatherRiver #ButteCounty

Twitter Accounts of Interest

<https://twitter.com/rqskye/lists/oroville/members>

[List of Official California Government Twitter Accounts](#)

[Twitter Storify from ABC10](#)

Traditional Media and Blogs

Television

Action News Now: [Website](#) [Twitter](#)

CBS Sacramento: [Website](#) [Twitter](#) [Live Stream on Facebook](#)

Radio

[Radio Stations in California](#)

[Radio Stations in Chico, CA](#)

[Radio Stations in Yuba County](#)

[Radio Stations in Sutter County](#)

Animals in Disaster

Urgent Needs:

- Feb 13: 12:28pm From the Nevada County Veterinary Disaster Response Team (overseeing the large and small animals), there is a need for animal crates, blankets for large and small animals, and water bowls for large and small animals. [source](#)

Animal Evacuation Shelters / Boarding

General Information:

- If you need assistance boarding your pets during the evacuation, please contact: VCA Sacramento Veterinary Referral Center (916) 362-3111. [source](#)
- People offering places for people with pets. [Oroville Dam Evacuation Help Facebook Page](#)
- People offering animal boarding - [Oroville Evacuation Services Link Up Facebook page.](#)

Sacramento County

- Oroville evacuees with horses can arrange to take them to Gibson Ranch, 8556 Gibson Ranch Rd, Elverta, CA in Sacramento County . They also have RV facilities. Call 211 for more information. [Source](#)
- Cattlemen's Livestock Market, 12495 Stockton Blvd, Galt, Sacramento County. [source](#)

Placer County

- [Fieldhaven Feline Center](#) has set up a shelter at 590 McBean Parkway in Lincoln for cats and pocket pets. We still have plenty of room for evacuated cats and are staffed 24 hrs a day until further notice. Supplies are needed. [source](#)
- VCA Loomis Basin Vet Clinic-free boarding cats, dogs. 916-652-5816. 3901 Sierra College Blvd, Loomis, Placer County. Donations of dog food would be welcome. [Source](#)
- Placer County Fairgrounds, 800 All American City Blvd in Roseville. Pets that can remain with their owners can be brought to the fairgrounds, and animals can also be taken to our animal shelter at 11232 B Ave. in Auburn. [source](#)

Glenn County

- Glenn County Fairgrounds, 221 E Yolo St, Orland, CA. Plenty of space for people, pets, livestock, and RVs. [source](#)

Tehama County

- Feb 12, 9:13pm PST Rolling Hills Equestrian Center is receiving large livestock, cattle pens, 300 horse stalls. 48 RV spaces also dry camping available call Carol @ 916. 826-1074 [Source](#) Confirmed.

Butte County

- Silver Dollar Fairgrounds, 2357 Fair Street, Chico [source](#) Accepting small animals.
- Erickson Vet Hospital is accepting cats and dogs, 11181 Midway, Chico 95928 [source](#)
- Concow Lake campground has evacuee space especially those with large animals. [Source](#)
- Lrg. animal shelter open at Camelot Equest. Park,1985 Clark Rd., Oroville, CA. [Source](#)

Nevada County

- Nevada County Fairgrounds at 11228 McCourney Rd. Grass Valley is taking large animals. [Source](#)

Assistance for Hauling Livestock

Feb 12:

- Person in Orland, CA who can help haul cows and calves. See source link for information. [source](#)

Veterinarians

[Butte County Veterinarians](#)

[Yuba County Veterinarians](#)

[Sutter County Veterinarians](#)

