



# Impacts of NM Water Policy on Permian Basin Producers

Laura Riley

---

# GAVILAN

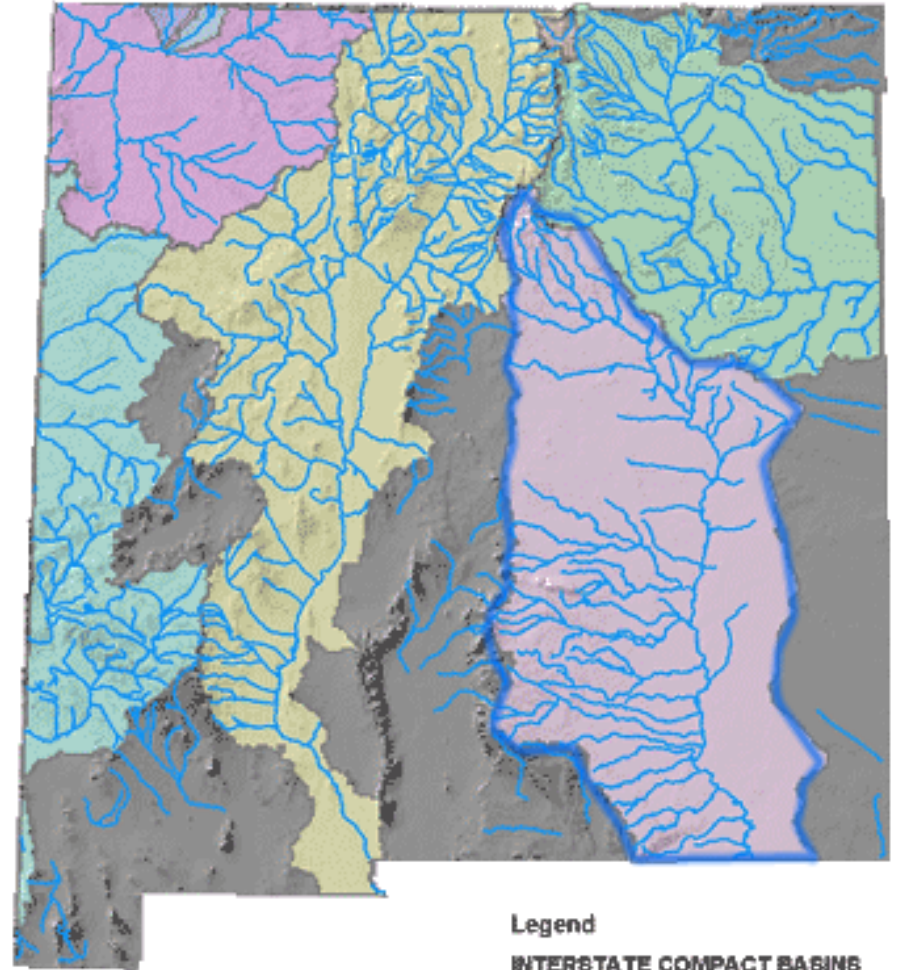
---

*Solutions*



# Overview

- NM Water Law
- Regionalized Water Management
- Conflicting Policy
- Unprecedented Growth



Legend  
INTERSTATE COMPACT BASINS  
REGION



Long-Lateral Permian Oil Well Inputs and Outputs Weigh ~405,000 metric tons

**Per Well**

Produced water:  
Over 250,000 metric tons

Frac source water:  
76,000 metric tons

Crude oil and liquids:  
68,000 metric tons

Pipe, sand, misc. consumables:  
Approx. 10,000 metric tons

Empire State Building Weighs ~340,000 metric tons

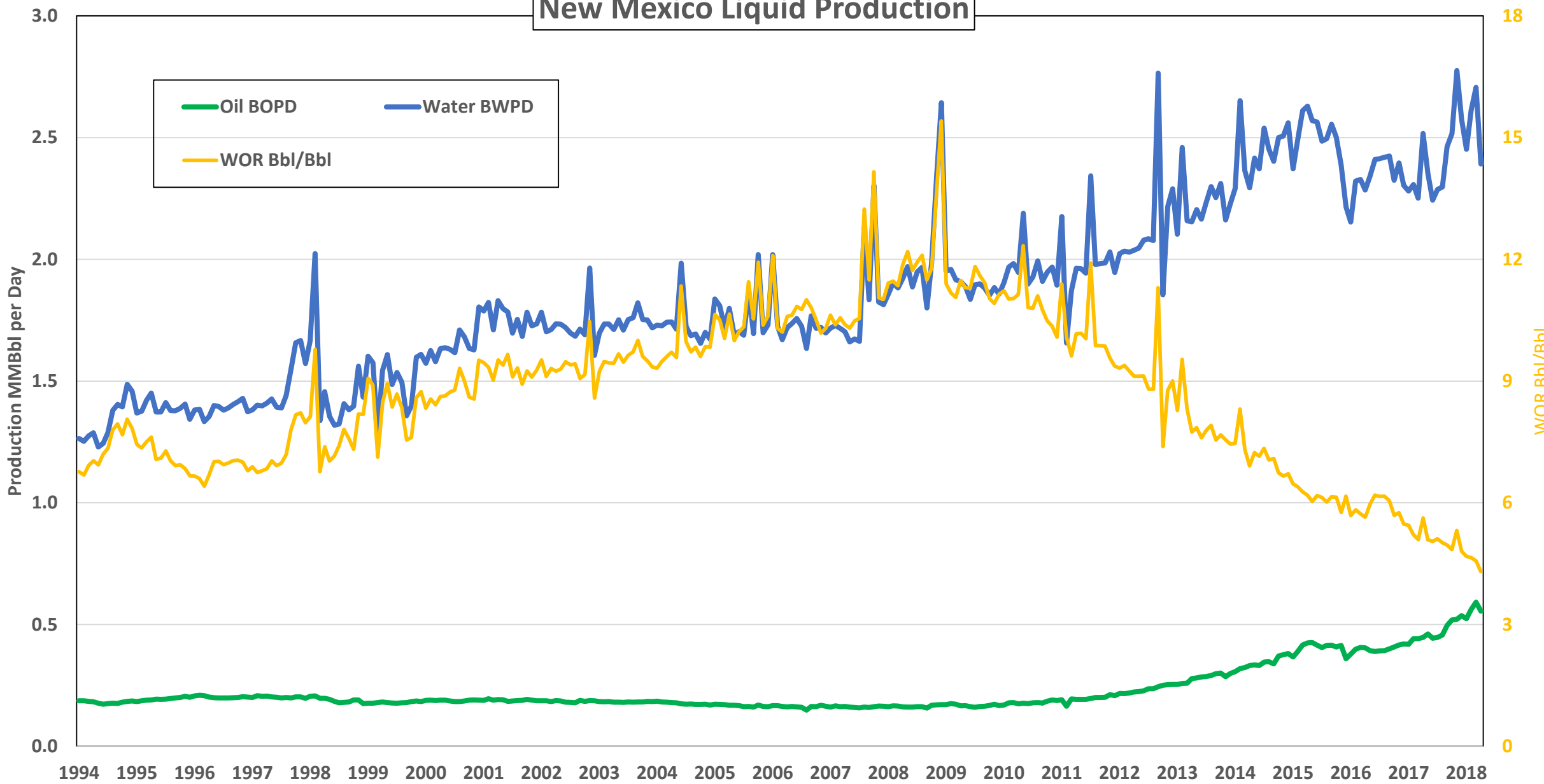
**~450 wells drilled per month**


**Water will likely account for approximately 80% of lifetime "mass moved" for many Permian Basin wells.**

Source: CME Group, Empire State Realty Trust, FracFocus, TexasBrine.com

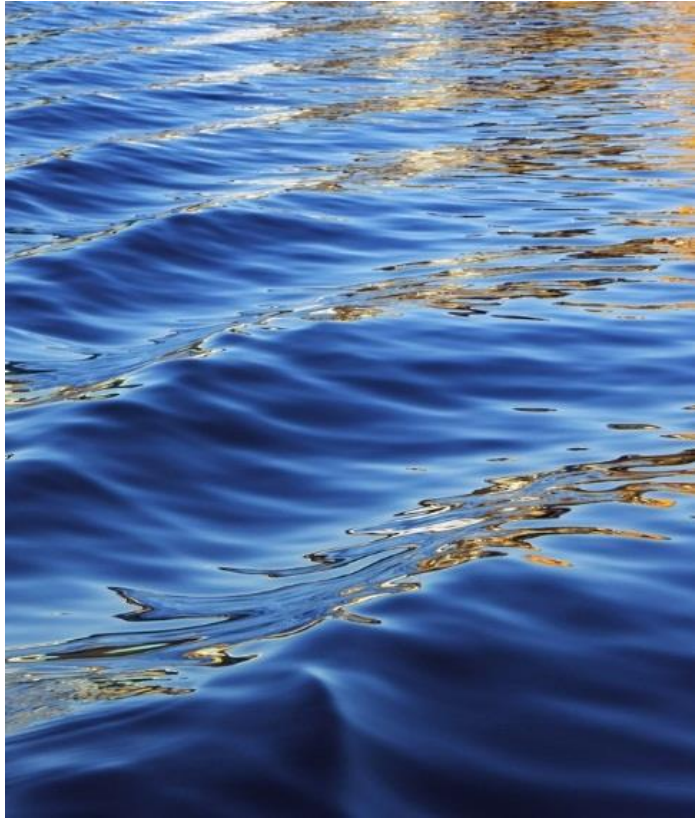
*This analysis assumes 500,000 barrels of oil produced, with a water-to-oil ratio of 3:1. In many cases, wells will ultimately produce more oil and at a higher water cut.*

# New Mexico Liquid Production

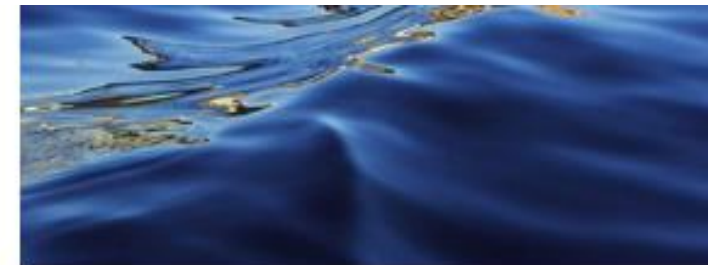




# Regulatory Environment



- New Mexico Office of State Engineer
- New Mexico Oil Conservation Division
- Landownership
  - Bureau of Land Management
  - New Mexico State Land Office
  - Private



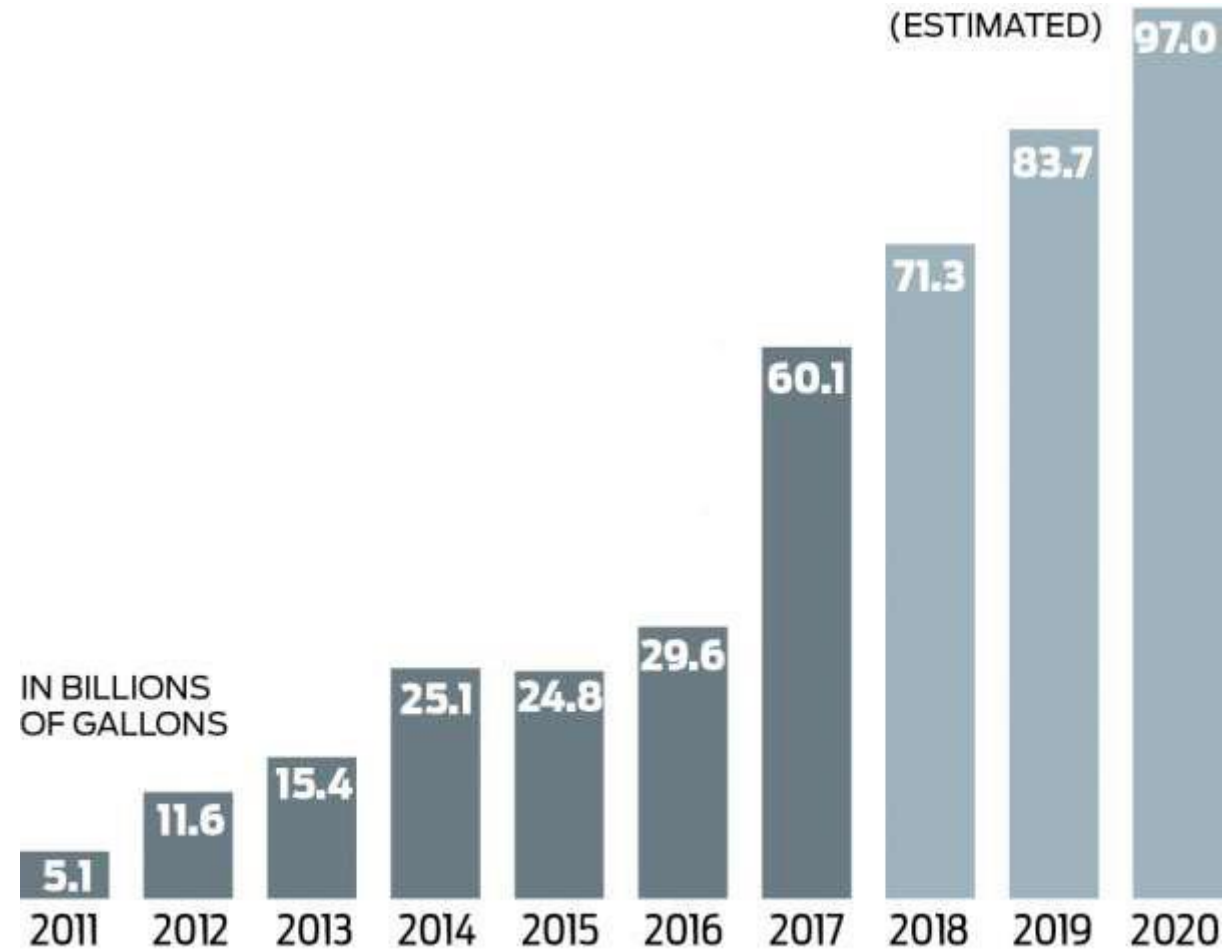
# New Mexico Office of State Engineer

- Surface and Groundwater
  - Carlsbad Underground Basin
  - Capitan Basin
  - Roswell Artesian
  - Lea County

Pecos River Compact



# Water Usage in Permian Basin



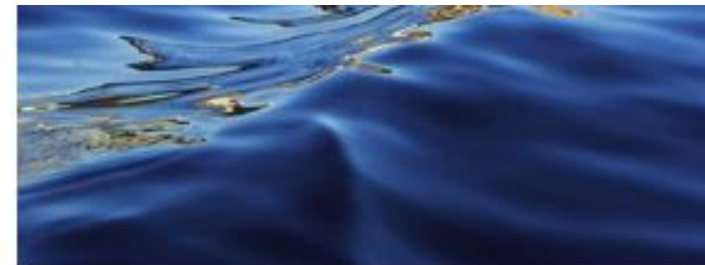
Source: IHS Markit

Houston Chronicle



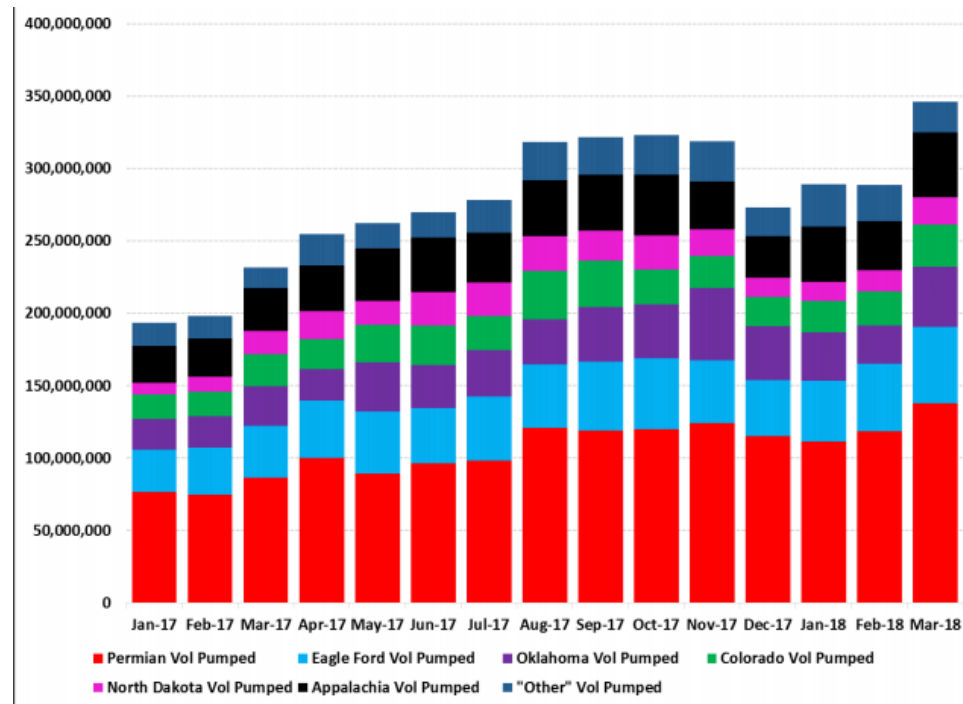
# New Mexico Oil Conservation Division

- Protection of Ground Water
- Injectable Water
- Saline Water Production
- Produced Water Recycling

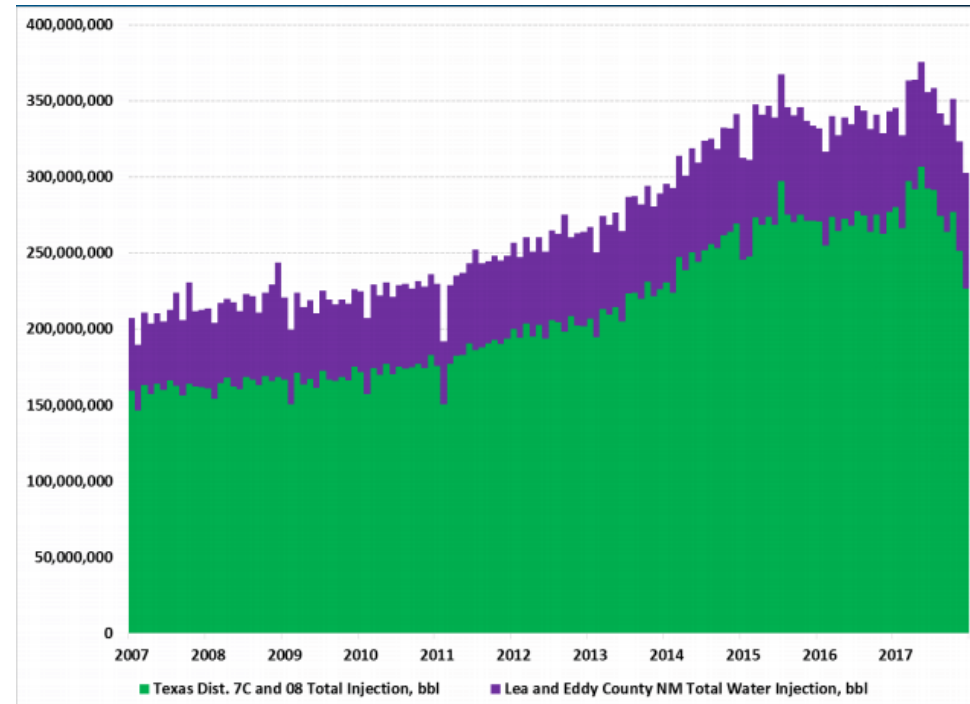


# Supply & Demand

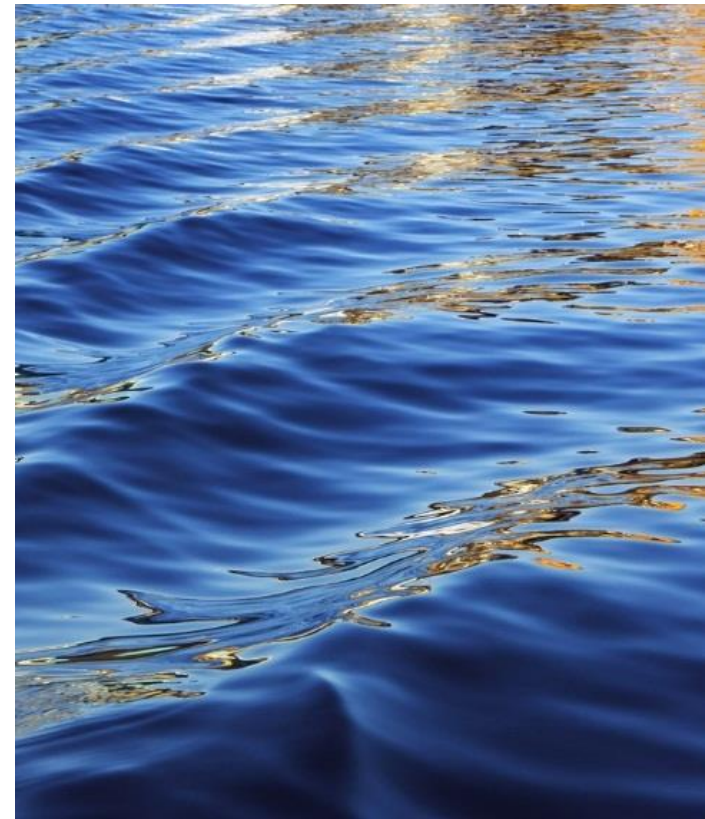
## Frac Water Volumes Pumped



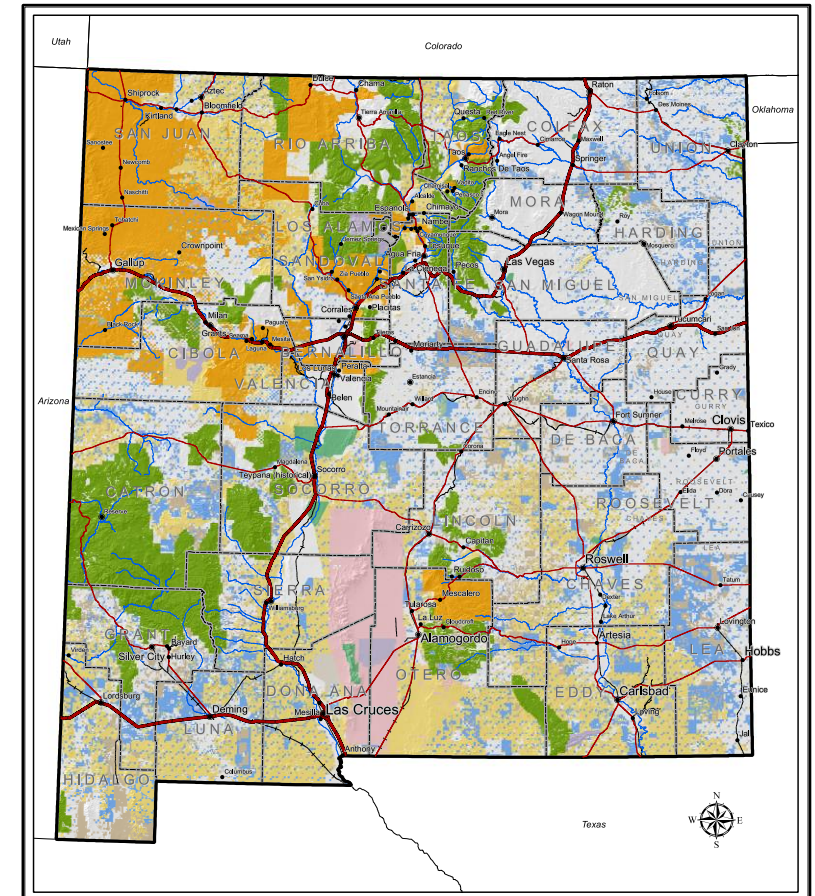
## Water Injection



# Landownership



- Bureau of Land Management
- New Mexico State Land Office
- Private



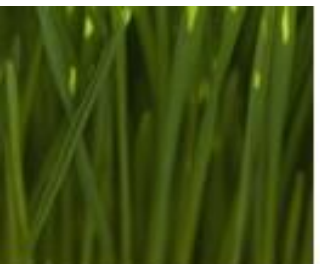
# Bureau of Land Management

- Carlsbad RMP
- NEPA
- T & E Species
- Timeframe
- Oversight



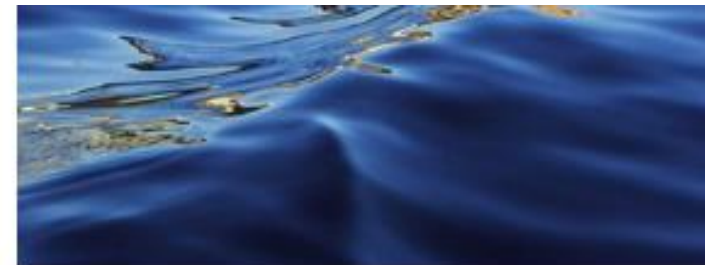
# New Mexico State Land Office

- Political Environment
- Dual Responsibility



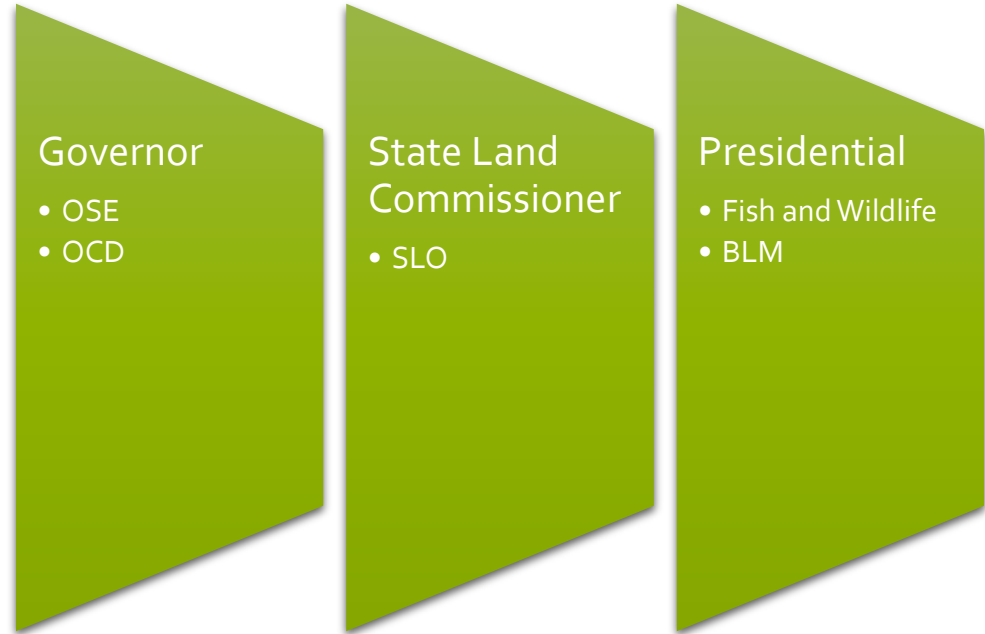
# Private Landowners

- Surface Damages
- Water Rights
- Pore Space



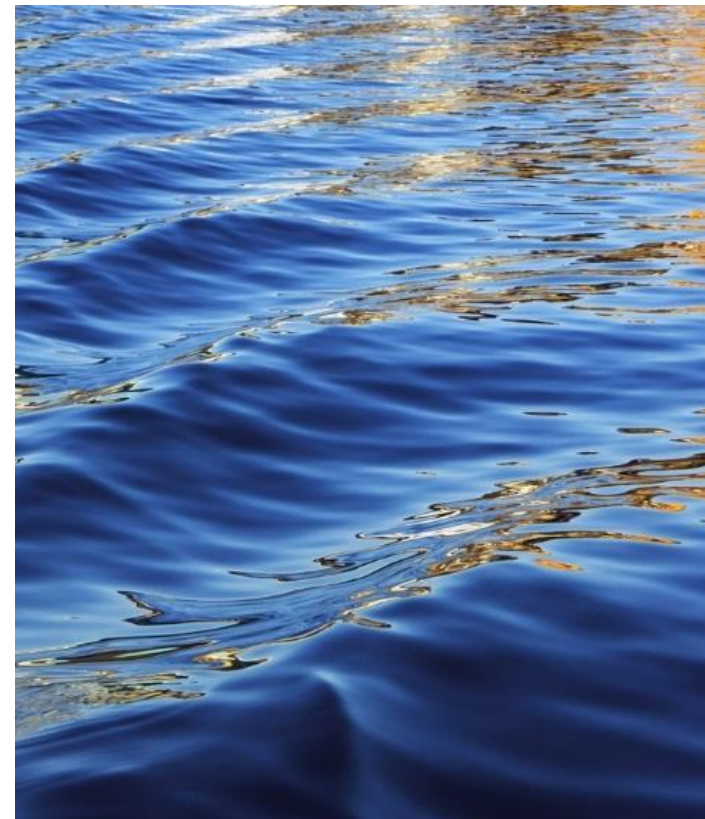
# Anticipated Changes

- OSE – Water Plan
- OCD- Injection Rule
- SLO- Policy Changes
- BLM- Carlsbad RMP
- FWS- T & E Species





# Conclusions



# References

New Mexico Office of State Engineer-

[Pecos River Compact](http://www.ose.state.nm.us/Compacts/Pecos/isc_pecosCompact.php)- [http://www.ose.state.nm.us/Compacts/Pecos/isc\\_pecosCompact.php](http://www.ose.state.nm.us/Compacts/Pecos/isc_pecosCompact.php)

[Water Map](http://www.ose.state.nm.us/WRAB/abstractMap.php)-<http://www.ose.state.nm.us/WRAB/abstractMap.php>

New Mexico Oil Conservation Division

[Underground Injection Control](http://www.ose.state.nm.us/WRAB/abstractMap.php)-<http://www.ose.state.nm.us/WRAB/abstractMap.php>

New Mexico State Land Office

[Forms and applications](http://www.nmstatelands.org/Forms_and_Applications.aspx)- [http://www.nmstatelands.org/Forms\\_and\\_Applications.aspx](http://www.nmstatelands.org/Forms_and_Applications.aspx)

---

# GAVILAN

---

*Solutions*

Laura Riley

4533 17th Ave. NE  
Rio Rancho, NM 87144

505.330.3984  
lriley@gavilansolutions.com