



**ASSA ABLOY**



# Product Pricelist

U.S. & Canada Effective Date: November 1, 2021



Experience a safer  
and more open world



ASSA ABLOY

# Product Pricelist

U.S. & Canada Effective date November 1, 2021





# HES Product List

## Electric Strikes

1006	2
1500	4
1600	5
NEW ES100 Aperio® Wireless Electric Strike with Card Reader	6
4500C	7
5000, 5200	8
7000	9
7501	10
8000, 8300	10
8500	11
UNL MUNL	11
9400, 9500, 9600, 9700, 9800	12
Folger Adam SB:310-1(X), 310-2	13
Folger Adam 310-2 3/4, 310-2 3/4 OB	14
Folger Adam 310-3-1	14
Folger Adam 310-4, 310-4 (S)	15
Folger Adam 310-4-X	15
Folger Adam 310-6-X	16
Folger Adam 310-1-X	19
Folger Adam 712, 712-75	20
Folger Adam 732, 732-75	20
Folger Adam SB710, SB710-75	21
Folger Adam SB730, SB730-75	21
Folger Adam 742-75	22
Folger Adam SB740-75	22
Electric Strike Accessories	23

## Cabinet Locks

610	24
660	24
KP20 Stand-Alone Keypad Cabinet Lock	24
K100-622H Aperio® Wireless Cabinet Lock	25
NEW KS200 Wiegand & KS210 OSDP Integrated Wired Access Control Server Cabinet Lock	26
NEW KS-M Mechanical Server Cabinet Lock	27
K200, KS200, KS210 & KS-M Accessories	29

## Terms & Conditions | Warranty

Terms & Conditions, Warranties	30
--------------------------------	----

# Electric Strikes

## 1006CLB Complete Pacs for Latchbolt Locks

MODEL	DESCRIPTION	630
1006CLB		\$650
1006CLB-F	Fail Safe	\$650
1006CLB-LBM		\$771
1006CLB-F-LBM	Fail Safe	\$771
1006CLB-LBSM		\$781
1006CLB-F-LBSM	Fail Safe	\$781

## 1006CDB Complete Pacs for Locks with Deadbolts

MODEL	DESCRIPTION	630
1006CDB		\$676
1006CDB-F	Fail Safe	\$676

## 1006CAS Complete Pacs for Locks with Continuous Deadbolt Recapture

MODEL	DESCRIPTION	630
1006CAS		\$682
1006CAS-F	Fail Safe	\$682
1006CAS-2		\$710
1006CAS-2-F	Fail Safe	\$710

## 1006CS Complete Pacs for Latchbolts & Deadbolts

MODEL	DESCRIPTION	630
1006CS		\$714
1006CS-F	Fail Safe	\$714

## 1006 Electric Strike Bodies

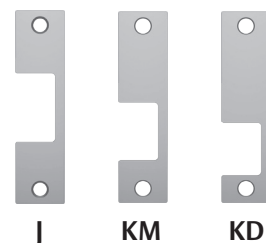
MODEL	DESCRIPTION	605	606	612	613	629	630	BLK
1006		\$706	\$691	\$691	\$661	\$706	\$611	\$633
1006-F	Fail Safe	\$706	\$691	\$691	\$661	\$706	\$611	\$633
1006-LBM		\$827	\$814	\$814	\$782	\$827	\$733	\$755
1006-F-LBM	Fail Safe	\$827	\$814	\$814	\$782	\$827	\$733	\$755
1006-LBSM		\$837	\$824	\$824	\$792	\$837	\$743	\$765
1006-F-LBSM	Fail Safe	\$837	\$824	\$824	\$792	\$837	\$743	\$765



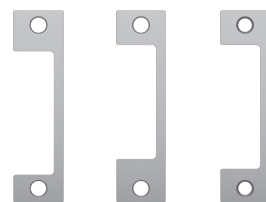
How to Orders on next page

## Faceplates

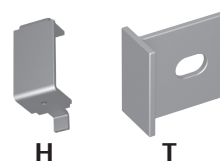
MODEL	DESCRIPTION	605	606	612	613	629	630	BLK
LB	Kit includes J, KM and KD faceplates						\$39	
DB	Kit includes faceplates and brackets to make N and H series options						\$65	
DB2	Kit includes faceplates and brackets to make N-2 and H-2 series options						\$93	
J		\$112	\$101	\$101	\$61	\$101	\$38	\$61
KD		\$112	\$101	\$101	\$61	\$101	\$38	\$61
KM		\$112	\$101	\$101	\$61	\$101	\$38	\$61
ND		\$113	\$99	\$99	\$81	\$99	\$59	\$81
NM		\$113	\$99	\$99	\$81	\$99	\$59	\$81
HM		\$113	\$99	\$99	\$81	\$99	\$59	\$81
HTD		\$113	\$99	\$99	\$81	\$99	\$59	\$81



J KM KD



ND NM N



H T

## Specialty Faceplates

MODEL	605	606	612	613	629	630	BLK
E	\$114	\$101	\$101	\$81	\$101	\$59	\$81
R	\$114	\$101	\$101	\$81	\$101	\$59	\$81
Z	\$113	\$99	\$99	\$62	\$99	\$39	\$62
J-2	\$126	\$110	\$110	\$98	\$110	\$76	\$98
KM-2	\$126	\$110	\$110	\$98	\$110	\$76	\$98

## Accessories

ITEM	DESCRIPTION	PRICE
157	Torx screws	\$15
1000-102	Rain guard	\$37
1000-104	Lip extension trim adapter (BLK)	\$68
1000-110	Replacement strike plate	\$112
1000-130	KD filler plate	\$50
1006-103	Full keeper shims	\$13
1006-105	Trim enhancer (BLK)	\$35

## How to Order

Specify quantity and the following information. Order related products separately.

SERIES	MODEL	FAIL SAFE/SECURE	FINISH*	OPTION(S)
1006	—	– F	– 630	– LBM
1006 Universal Electric Strike Faceplates ordered separately	CS** Complete Electric Strike; includes the SMART Pac® III and J, KD, KM, HM, and AD faceplates	F Fail Safe/Secure (blank) Fail Secure (standard)	605 Bright Brass	LBM Latchbolt Monitor
	CLB Complete Electric Strike for latchbolt locks; includes the J, K, KD, and KM faceplates		606 Satin Brass	LBSM Latchbolt Strike Monitor
	CDB** Complete Electric Strike for Deadbolt Locks; includes the HM and AD faceplates		612 Satin Bronze	
	CAS Complete Electric Strike for Locks with Continuous Deadbolt Recature; includes the ND and NM faceplates		613 Bronze Toned	
			629 Bright Stainless Steel	
			630 Satin Stainless Steel	
			BLK Black	

\*Complete Pacs are only available in the 630 finish. \*\*Complete Pacs with deadbolts are not available with monitoring options.

## 1500C Complete Pacs for Latchbolt Locks

MODEL	DESCRIPTION	605	606	612	613E	629	630	BSP
<b>1500C</b>		\$718	\$699	\$699	\$650	\$718	\$590	\$650
<b>1500C-LM</b>	Lock monitors	\$823	\$804	\$804	\$755	\$823	\$695	\$755
<b>1500C-DLM</b>	Dual lock monitors	\$928	\$909	\$909	\$860	\$928	\$800	\$860
<b>1500C-LMS</b>	Lock monitors & strike monitors	\$833	\$814	\$814	\$765	\$833	\$705	\$765
<b>1500C-DLMS</b>	Dual lock monitors & strike monitors	\$938	\$919	\$919	\$870	\$938	\$810	\$870

## 1500 Electric Strike Bodies

MODEL	DESCRIPTION	605	606	612	613E	629	630	BSP
<b>1500</b>		\$621	\$611	\$611	\$577	\$621	\$545	\$577
<b>1500-LM</b>	Lock monitor	\$726	\$716	\$716	\$682	\$726	\$650	\$682
<b>1500-DLM</b>	Dual lock monitors	\$831	\$821	\$821	\$787	\$831	\$755	\$787
<b>1500-LMS</b>	Lock monitor & strike monitor	\$736	\$726	\$726	\$692	\$736	\$660	\$692
<b>1500-DLMS</b>	Dual lock monitors & strike monitor	\$841	\$831	\$831	\$797	\$841	\$765	\$797



## Faceplates

MODEL	DESCRIPTION	605	606	612	613E	629	630	BSP
<b>1LB</b>	Kit includes 1J, 1K, 1KD and 1KM faceplates	\$97	\$88	\$88	\$73	\$97	\$45	\$73
<b>1LB-2</b>	Kit includes 1J-2 & 1KM-2 faceplates	\$126	\$119	\$119	\$103	\$126	\$75	\$103

## Accessories

ITEM	DESCRIPTION	PRICE
<b>157</b>	Torx screws	\$15
<b>OPT-1SRK</b>	Optional spring replacement kit	\$49
<b>OPT-1LM</b>	Optional upgrade kit includes single lock monitor	\$113
<b>OPT-1DLM</b>	Optional kit includes dual lock monitors	\$226
<b>MOD-1SOL</b>	Solenoid replacement module	\$308

MODEL	DESCRIPTION	605	606	612	613E	629	630	BSP
<b>1500-104</b>	Lip extension trim adapter	\$87	\$81	\$81	\$66	\$87	\$42	\$66
<b>1500-106</b>	4500 filler plates and trim enhancer kit	\$80	\$74	\$74	\$59	\$80	\$35	\$59

## How to Order Specify quantity and the following information. Order related products separately.

SERIES	MODEL	FINISH	OPTION(S)*
<b>1500</b>	<b>—</b>	<b>– 630</b>	<b>– LM</b>
<b>1500</b> Universal Electric Strike faceplate option kits ordered separately	<b>C</b> Complete Electric Strike; includes 1LB faceplate kit for latchbolts	<b>605</b> Bright Brass	<b>LM</b> Lock Monitor
		<b>606</b> Satin Brass	<b>DLM</b> Dual Lock Monitor
		<b>612</b> Satin Bronze	<b>LMS</b> Lock Monitor and Strike Monitor
		<b>613E</b> Dark Oxidized Satin Bronze Powder	<b>DLMS</b> Dual Lock Monitors and Strike Monitor
		<b>629</b> Bright Stainless Steel	
		<b>630</b> Satin Stainless Steel	
		<b>BSP</b> Black Suede Powder	

\*LMS/DLMS factory installed only option.

## 1600CLB Complete Pacs for Latchbolt Locks

MODEL	DESCRIPTION	605	606	612	613E	629	630	BSP
<b>1600-CLB</b>		\$718	\$699	\$699	\$650	\$718	\$590	\$650
<b>1600-CLB-LM</b>	Lock monitor	\$823	\$804	\$804	\$755	\$823	\$695	\$755
<b>1600-CLB-DLM</b>	Dual lock monitor	\$928	\$909	\$909	\$860	\$928	\$800	\$860
<b>1600-CLB-LMS</b>	Lock monitor & strike monitor	\$833	\$814	\$814	\$765	\$833	\$705	\$765
<b>1600-CLB-DLMS</b>	Dual lock monitors & strike monitor	\$938	\$919	\$919	\$870	\$938	\$810	\$870

## 1600CDB Complete Pacs for Locks with Deadbolts

MODEL	DESCRIPTION	605	606	612	613E	629	630	BSP
<b>1600-CDB</b>		\$718	\$699	\$699	\$650	\$718	\$590	\$650
<b>1600-CDB-LM</b>	Lock monitor	\$823	\$804	\$804	\$755	\$823	\$695	\$755
<b>1600-CDB-DLM</b>	Dual lock monitors	\$928	\$909	\$909	\$860	\$928	\$800	\$860
<b>1600-CDB-LMS</b>	Lock monitor & strike monitor	\$833	\$814	\$814	\$765	\$833	\$705	\$765
<b>1600-CDB-DLMS</b>	Dual lock monitors & strike monitor	\$938	\$919	\$919	\$870	\$938	\$810	\$870

## 1600CS Complete Pacs for Latchbolts & Deadbolts

MODEL	DESCRIPTION	605	606	612	613E	629	630	BSP
<b>1600-CS</b>		\$815	\$787	\$787	\$723	\$815	\$635	\$723
<b>1600-CS-LM</b>	Lock monitor	\$920	\$892	\$892	\$828	\$920	\$740	\$828
<b>1600-CS-DLM</b>	Dual lock monitors	\$1025	\$997	\$997	\$933	\$1025	\$845	\$933
<b>1600-CS-LMS</b>	Lock monitor & strike monitor	\$930	\$902	\$902	\$838	\$930	\$750	\$838
<b>1600-CS-DLMS</b>	Dual lock monitors & strike monitor	\$1035	\$1007	\$1007	\$943	\$1035	\$855	\$943

## 1600 Electric Strike Bodies

MODEL	DESCRIPTION	605	606	612	613E	629	630	BSP
<b>1600</b>		\$621	\$611	\$611	\$577	\$621	\$545	\$577
<b>1600-LM</b>	Lock monitor	\$726	\$716	\$716	\$682	\$726	\$650	\$682
<b>1600-DLM</b>	Dual lock monitors	\$831	\$821	\$821	\$787	\$831	\$755	\$787
<b>1600-LMS</b>	Lock monitor & strike monitor	\$736	\$726	\$726	\$692	\$736	\$660	\$692
<b>1600-DLMS</b>	Dual lock monitors & strike monitor	\$841	\$831	\$831	\$797	\$841	\$765	\$797

## Faceplates

MODEL	DESCRIPTION	605	606	612	613E	629	630	BSP
<b>1LB</b>	Kit includes 1J, 1K, 1KD and 1KM faceplates	\$97	\$88	\$88	\$73	\$97	\$45	\$73
<b>1LB-2</b>	Kit includes 1J-2 & 1KM-2 faceplates	\$126	\$119	\$119	\$103	\$126	\$75	\$103
<b>1DB</b>	Kit includes faceplates and brackets to make 1N, 1ND, 1NM and 1NTD options	\$97	\$88	\$88	\$73	\$97	\$45	\$73
<b>1DB-2</b>	Kit includes faceplates and brackets to make 1N-2 option	\$126	\$119	\$119	\$103	\$126	\$75	\$103

## Accessories

ITEM	DESCRIPTION	PRICE
<b>157</b>	Torx screws	\$15
<b>OPT-15RK</b>	Optional spring replacement kit	\$49
<b>OPT-11LM</b>	Optional upgrade kit includes single lock monitor	\$113
<b>OPT-1DLM</b>	Optional kit includes dual lock monitors	\$226
<b>MOD-15OL</b>	Solenoid replacement module	\$308

MODEL	DESCRIPTION	605	606	612	613E	629	630	BSP
<b>1600-104</b>	1600 Lip extension trim adapter	\$87	\$81	\$81	\$66	\$87	\$42	\$66
<b>1600-106</b>	1600 adapter and trim enhancer kit	\$80	\$74	\$74	\$59	\$80	\$35	\$59

## How to Order Specify quantity and the following information. Order related products separately.

SERIES	MODEL	FINISH	OPTION(S)*
<b>1600</b>	<b>– CS</b>	<b>– 630</b>	<b>– LM</b>
1600 Universal Electric Strike; Faceplate option kits ordered separately	<b>CS</b> Complete Electric Strike; includes 1LB faceplate kit for latchbolts and 1DB faceplate kit for deadbolts	<b>605</b> Bright Brass	<b>LM</b> Lock Monitor
	<b>CLB</b> Complete Electric Strike for Latchbolt Locks; includes 1LB faceplate kit for latchbolts	<b>606</b> Satin Brass	<b>DLM</b> Dual Lock Monitor
		<b>612</b> Satin Bronze	<b>LMS</b> Lock Monitor and Strike Monitor
	<b>CDB</b> Complete Electric Strike for Deadbolt Locks; includes 1DB faceplate kit for deadbolts	<b>613E</b> Dark Oxidized Satin Bronze Powder	<b>DLMS</b> Dual Lock Monitors and Strike Monitor
		<b>629</b> Bright Stainless Steel	
		<b>630</b> Satin Stainless Steel	
		<b>BSP</b> Black Suede Powder	

\*LMS/DLMS factory installed only option.

**h.e.s.**

**ASSA ABLOY**





## ES100-15 Aperio® Wireless Electric Strike with Card Reader

MODEL	DESCRIPTION	630
<b>ES100-15LH</b>	Aperio 1500 Wireless Electric Strike 1:1 Kit Latchbolts	\$1291
<b>ES100-15LMH</b>	Aperio 1500 Monitored Wireless Electric Strike 1:1 Kit Latchbolts	\$1400

### Faceplates

MODEL	DESCRIPTION	605	606	612	613E	629	630	BSP
<b>1LB</b>	Kit includes 1J, 1K, 1KD and 1KM faceplates	\$97	\$88	\$88	\$73	\$97	\$45	\$73
<b>1LB-2</b>	Kit includes 1J-2 & 1KM-2 faceplates	\$126	\$119	\$119	\$103	\$126	\$75	\$103

### 1500 Accessories

MODEL	DESCRIPTION	605	606	612	613E	629	630	BSP
<b>1500-104</b>	Lip extension trim adapter	\$87	\$81	\$81	\$66	\$87	\$42	\$66
<b>1500-106</b>	4500 filler plates and trim enhancer kit	\$80	\$74	\$74	\$59	\$80	\$35	\$59

### ES100-15 Demo Mounts

ITEM	DESCRIPTION	PRICE
<b>DEMO-ES100-15L-IPS-BSP</b>	Demo Mount Kit ES100-15 Latchbolts   HID multiCLASS SE, HID Mobile Access (NFC), Seos Apple Wallet (NFC), Black Suede Powder	\$1090

## ES100-16 Aperio® Wireless Electric Strike with Card Reader

MODEL	DESCRIPTION	630
<b>ES100-16LH</b>	Aperio 1600 Wireless Electric Strike 1:1 Kit Latchbolts	\$1291
<b>ES100-16LMH</b>	Aperio 1600 Monitored Wireless Electric Strike 1:1 Kit Latchbolts	\$1400
<b>ES100-16SH</b>	Aperio 1600 Wireless Electric Strike 1:1 Kit Latchbolts and Deadbolts	\$1353
<b>ES100-16SMH</b>	Aperio 1600 Monitored Wireless Electric Strike 1:1 Kit Latchbolts and Deadbolts	\$1462

### Faceplates

MODEL	DESCRIPTION	605	606	612	613E	629	630	BSP
<b>1LB</b>	Kit includes 1J, 1K, 1KD and 1KM faceplates	\$97	\$88	\$88	\$73	\$97	\$45	\$73
<b>1LB-2</b>	Kit includes 1J-2 & 1KM-2 faceplates	\$126	\$119	\$119	\$103	\$126	\$75	\$103
<b>1DB</b>	Kit includes faceplates and brackets to make 1N, 1ND, 1NM and 1NTD options	\$97	\$88	\$88	\$73	\$97	\$45	\$73
<b>1DB-2</b>	Kit includes faceplates and brackets to make 1N-2 option	\$126	\$119	\$119	\$103	\$126	\$75	\$103

### 1600 Accessories

MODEL	DESCRIPTION	605	606	612	613E	629	630	BSP
<b>1600-104</b>	1600 Lip extension trim adapter	\$87	\$81	\$81	\$66	\$87	\$42	\$66
<b>1600-106</b>	1600 adapter and trim enhancer kit	\$80	\$74	\$74	\$59	\$80	\$35	\$59

### ES100 Accessories

ITEM	DESCRIPTION	PRICE
<b>157</b>	Torx screws	\$15
<b>OPT-1SRK</b>	Optional spring replacement kit	\$49
<b>OPT-1LM</b>	Optional upgrade kit includes single lock monitor	\$113
<b>EXT-10-ANT</b>	ASSA ABLOY Aperio™ Hub External Antenna (3, 9 DBi Omni-Directional)	\$53

### How to Order *Specify quantity and the following information. Order related products separately.*

PRODUCT FAMILY	COMMUNICATION	MODEL SERIES	FACEPLATES	OPTIONS	CARD TECHNOLOGY	STRIKE FINISH
<b>ES</b>	<b>100</b>	<b>- 15</b>	<b>L</b>	<b>H</b>	<b>-IPS</b>	<b>- 630</b>
Electric Strike	<b>100</b> Aperio Wireless	<b>15</b> Reader and 1500 Strike <b>16</b> Reader and 1600 Strike	<b>L</b> Complete Pac for Latchbolts <b>S*</b> Complete Pac for Latchbolts and Deadbolts	<b>H**</b> Wholesale Kit <b>MH**</b> Wholesale Kit with Monitoring for High Security	<b>IPS</b> RFID (HID multiCLASS SE)	<b>630</b> Satin Stainless Steel

\*Available with 1600 Only. \*\*Only available with L or S Complete Pac Options in 630 Finish.

**HES ES100:** The HES ES100 Electric Strike is available as either a pre-paired lock and hub kit (no certification required) or as a field configurable component (requires Aperio® Certified Integrator certification). Pre-paired kits support limited features. Field configured devices are required in order to support all options. Visit [IntelligentOpenings.com](https://www.intelligentopenings.com) to learn more.





## 4500C Complete Pacs for Latchbolt Locks

MODEL	DESCRIPTION	605	606	612	613	629	630
<b>4500C</b>		\$757	\$744	\$744	\$708	\$757	\$663
<b>4500C-LBM</b>	Latchbolt monitor	\$881	\$865	\$865	\$830	\$881	\$784
<b>4500C-LBSM</b>	Latchbolt strike monitor	\$891	\$875	\$875	\$840	\$891	\$794

## Accessories

ITEM	DESCRIPTION	PRICE
<b>157</b>	Torx screws	\$15
<b>4500-105</b>	Trim enhancer (BLK)	\$35
<b>4500-110</b>	Replacement strike plate	\$108
<b>4500-131</b>	Filler block	\$45
<b>4501-1/2</b>	1/2" stackable lip extension	\$60
<b>4501-1</b>	1" stackable lip extension	\$67



## How to Order Specify quantity and the following information. Order related products separately.

SERIES	FINISH*	OPTION(S)
<b>4500C</b>	<b>– 630</b>	<b>– LBM</b>
<b>4500C</b> Complete Electric Strike; includes faceplates for cylindrical and mortise locks	<b>605</b> Bright Brass	<b>LBM</b> Latchbolt Monitor
	<b>606</b> Satin Brass	<b>LBSM</b> Latchbolt Strike Monitor
	<b>612</b> Satin Bronze	
	<b>613</b> Bronze Toned	
	<b>629</b> Bright Stainless Steel	
	<b>630</b> Satin Stainless Steel	

## 5000C, 5200C Complete Pacs for Latchbolt Locks

MODEL	DESCRIPTION	630
5000C		\$213
5000C-LBM	Latchbolt monitor	\$293
5200C		\$218
5200C-LBM	Latchbolt monitor	\$299
5200C-LBSM	Latchbolt strike monitor	\$309

## 5000, 5200 Electric Strike Bodies

MODEL	DESCRIPTION	630
5000		\$189
5000-LBM	Latchbolt monitor	\$269
5200		\$194
5200-LBM	Latchbolt monitor	\$274
5200-LBSM	Latchbolt strike monitor	\$284



## Faceplates

MODEL	DESCRIPTION	605	606	612	613	629	630	BSP
501	For use with cylindrical locksets in ANSI metal jambs	\$71	\$52	\$52	\$44	\$71	\$21	\$44
501A	For use with cylindrical locksets or spring latches in aluminum frames. Includes universal mounting tabs.	\$77	\$55	\$55	\$48	\$77	\$26	\$48
502	For use with cylindrical locksets or spring latches in aluminum frames. Includes universal mounting tabs	\$92	\$76	\$76	\$63	\$92	\$45	\$63
503	For use with cylindrical locksets or spring latches in aluminum frames. Includes universal mounting tabs	\$92	\$76	\$76	\$63	\$92	\$45	\$63
504	For use with cylindrical locksets. Four-point mounting for wood installations.	\$92	\$76	\$76	\$63	\$92	\$45	\$63

## Accessories

ITEM	DESCRIPTION	PRICE
157	Torx screws	\$15
5000-105	Trim enhancer (goof plate)	\$33
5104-1/2	1/2" stackable lip extension	\$56
5104-1	1" stackable lip extension	\$64
5104-1-1/4	1-1/4" stackable lip extension	\$66
5200-105	Trim enhancer (goof plate)	\$33
5200-500	Filler block	\$59
5204-1/2	1/2" stackable lip extension	\$56
5204-1	1" stackable lip extension	\$64
5204-1-1/4	1-1/4" stackable lip extension	\$66

How to Order *Specify quantity and the following information. Order related products separately.*

SERIES	MODEL	FINISH	OPTION(S)*
5000, 5200	—	— 630	— LBM
5000, 5200 Universal Electric Strike; faceplate option kits ordered separately	C* Complete Electric Strike; includes the 501 and 501A faceplates	605 Bright Brass 606 Satin Brass 612 Satin Bronze 613 Bronze Powder 629 Bright Stainless Steel 630 Satin Stainless Steel BLK Black	LBM Latchbolt Monitor LBSM** Latchbolt Strike Monitor

\*Complete Pacs are only available in the 630 finish. \*\*LBSM only available with 5200.

## 7000C Complete Pacs for Latchbolt Locks

MODEL	DESCRIPTION	630
<b>7000C</b>		\$347
<b>7000C-LBM</b>	Latchbolt monitor	\$473

## 7000 Electric Strike Bodies

MODEL	DESCRIPTION	630
<b>7000</b>		\$284
<b>7000-LBM</b>	Latchbolt monitor	\$408

## Faceplates

MODEL	DESCRIPTION	605	606	612	613E	629	630	BLK
<b>791</b>	Cylindrical lock faceplate	\$117	\$100	\$100	\$86	\$117	\$65	\$86
<b>792</b>	Cylindrical lock faceplate	\$117	\$100	\$100	\$86	\$117	\$65	\$86
<b>783S</b>	Rim exit device faceplate				\$239		\$168	
<b>786S</b>	Rim exit device faceplate				\$271		\$186	
<b>789S</b>	Rim exit device faceplate				\$271		\$186	

## Accessories

ITEM	DESCRIPTION	PRICE
<b>157</b>	Torx screws	\$15
<b>7000-104</b>	Lip extension trim adapter (791 & 792 options only)	\$34
<b>7000-105</b>	Trim enhancer (goof plate) (791 & 792 options only)	\$34
<b>7000-106</b>	Keeper pocket adapter (783S & 789S options only)	\$33
<b>7000-107</b>	Full keeper shim pack	\$19
<b>7000-108</b>	Spacer plate (783S & 789S options, black finish only)	\$36
<b>7000-110</b>	Replacement strike plate (701 option only)	\$114
<b>SMB</b>	Surface mounting box	\$232

## How to Order

Specify quantity and the following information. Order related products separately.

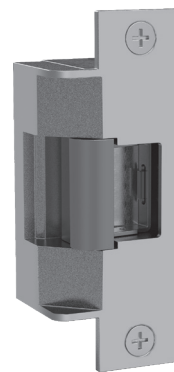
SERIES	MODEL	FINISH*	OPTION(S)
<b>7000</b>	—	— 630	— LBM
		<b>791 and 792 Options</b>	<b>783S, 786S, 789S Options</b>
<b>7000</b> Universal Electric Strike; faceplates ordered separately	<b>C*</b> Complete Electric Strike; includes the 791 and 792 faceplates	<b>605</b> Bright Brass	<b>LBM</b> Latchbolt Monitor
		<b>606</b> Satin Brass	
		<b>612</b> Satin Bronze	
	<b>(blank)</b> Strike Body Only	<b>613E</b> Dark Oxidized Satin Bronze Powder	
		<b>629</b> Bright Stainless Steel	
		<b>630</b> Satin Stainless Steel	
		<b>BLK</b> Black	

\*Complete Pacs are only available in 630 finish.



## 7501 Electric Strike

MODEL	DESCRIPTION	605	606	612	613	629	630
<b>7501</b>		\$764	\$748	\$748	\$732	\$764	\$669
<b>7501-LBM</b>	Latchbolt monitor	\$885	\$870	\$870	\$853	\$885	\$790



### How to Order *Specify quantity and the following information. Order related products separately.*

SERIES	FINISH*	OPTION(S)
<b>7501</b>	<b>– 630</b>	<b>– LBM</b>
<b>7501</b> Universal Electric Strike; includes faceplate for cylindrical locksets	<b>605</b> Bright Brass <b>606</b> Satin Brass <b>612</b> Satin Bronze <b>613</b> Bronze Toned <b>629</b> Bright Stainless Steel <b>630</b> Satin Stainless Steel	<b>LBM</b> Latchbolt Monitor

## 8000C, 8300C Complete Pac for Latchbolt Locks

MODEL	DESCRIPTION	630
<b>8000C</b>		\$256
<b>8000C-LBM</b>	Latchbolt monitor	\$375
<b>8300C</b>		\$587
<b>8300C-LBM</b>	Latchbolt monitor	\$708



## 8000, 8300 Electric Strike Bodies

MODEL	DESCRIPTION	630
<b>8000</b>		\$224
<b>8000-LBM</b>	Latchbolt monitor	\$343
<b>8300</b>		\$555
<b>8300-LBM</b>	Latchbolt monitor	\$675

## Faceplates

MODEL	DESCRIPTION	605	606	612	613	629	630	BLK
<b>801</b>	For use with: Cylindrical locksets in ANSI metal jams, with latchbolts up to 5/8" throw	\$83	\$67	\$67	\$54	\$83	\$32	\$54
<b>801A</b>	For use with: Cylindrical locksets with latchbolts up to 5/8" throw. Includes universal mounting tabs. Aluminum frames.	\$88	\$72	\$72	\$59	\$88	\$38	\$59
<b>801E</b>	For use with: Extended lip for 'knock-down' style frame installations. For use with cylindrical latchbolts up to 5/8" throw.	\$83	\$67	\$67	\$54	\$83	\$33	\$54
<b>802</b>	For use with: Cylindrical locksets with latchbolts up to 5/8" throw. Includes universal mounting tabs. Aluminum frames.	\$103	\$85	\$85	\$73	\$103	\$51	\$81
<b>803</b>	For use with: Cylindrical locksets with latchbolts up to 5/8" throw. Includes universal mounting tabs. Aluminum frames.	\$103	\$85	\$85	\$73	\$103	\$51	\$73
<b>805</b>	For use with: Cylindrical locksets. For use with latchbolts up to 5/8" throw Four point mounting for wood installations.	\$103	\$85	\$85	\$73	\$103	\$51	\$73

### How to Order *Specify quantity and the following information. Order related products separately.*

SERIES	MODEL	FINISH*	OPTION(S)
<b>8000</b>	<b>—</b>	<b>– 630</b>	<b>– LBM</b>
<b>8000, 8300</b> Universal Electric Strike; faceplates ordered separately	<b>C</b> Complete Electric Strike; includes the 801 and 801A faceplates  <b>(blank)</b> Strike Body Only	<b>605</b> Bright Brass <b>606</b> Satin Brass <b>612</b> Satin Bronze <b>613</b> Bronze Toned <b>629</b> Bright Stainless Steel <b>630</b> Satin Stainless Steel <b>BLK</b> Black	<b>LBM</b> Latchbolt Monitor

\*Complete Pacs are only available in 630 finish.

## 8500 Electric Strike Bodies

MODEL	DESCRIPTION	605	606	612	613	629	630
<b>8500</b>		\$621	\$610	\$610	\$610	\$621	\$555
<b>8500-LBM</b>	Latchbolt monitor	\$742	\$732	\$732	\$732	\$742	\$675
<b>8500-LBSM</b>	Latchbolt strike monitor	\$752	\$742	\$742	\$742	\$752	\$685

## Faceplates

MODEL	DESCRIPTION	605	606	612	613	629	630
<b>851M</b>	For use with: Mortise locksets. Compatible locksets: Sargent 8100, 8200, 9200	\$94	\$77	\$77	\$67	\$94	\$43
<b>852K</b>	For use with: Mortise locksets. Compatible locksets: Corbin Russwin ML 2000	\$93	\$76	\$76	\$66	\$93	\$42
<b>852L</b>	For use with: Mortise locksets. Compatible locksets: Schlage L9000	\$94	\$77	\$77	\$67	\$94	\$42
<b>852M</b>	For use with: Mortise locksets. Compatible locksets: Yale 8700 (manufactured after 2005) & 8800, Accurate, Falcon, Kaba Ilco/Unican	\$94	\$77	\$77	\$67	\$94	\$43



## How to Order Specify quantity and the following information. Order related products separately.

SERIES	FINISH*	OPTION(S)
<b>8500</b>	<b>– 630</b>	<b>– LBM</b>
<b>8500</b> Universal Electric Strike; faceplates ordered separately	<b>605</b> Bright Brass	<b>LBM</b> Latchbolt Monitor
	<b>606</b> Satin Brass	<b>LBSM</b> Latchbolt Strike Monitor
	<b>612</b> Satin Bronze	
	<b>613</b> Bronze Toned	
	<b>629</b> Bright Stainless Steel	
	<b>630</b> Satin Stainless Steel	

## UNL, MUNL Electric Strike for Latchbolt Locks

MODEL	605	613	626
<b>UNL-12</b>		\$607	\$545
<b>UNL-24</b>		\$607	\$545
<b>MUNL-12</b>	\$777	\$815	\$759
<b>MUNL-24</b>	\$777	\$815	\$759

## Accessories

ITEM	DESCRIPTION	PRICE
<b>FSUNL-12</b>	Fail Safe/Fail Secure UnLatch Module, 12 VDC	\$134
<b>FSUNL-24</b>	Fail Safe/Fail Secure UnLatch Module, 24 VDC	\$134

## How to Order Specify quantity and the following information. Order related products separately.

SERIES	FAIL SAFE/SECURE	VOLTAGE	FINISH
<b>MUNL</b>	<b>—</b>	<b>– 24</b>	<b>– 10B</b>
<b>UNL</b> Cylindrical	(blank) Fail Secure (Standard)	<b>12</b> 12 Volt	(blank) US26D/626—Stainless Steel
<b>MUNL</b> Mortise	Note: <b>FSUNL</b> for field-selectable fail safe operation ordered separately	<b>24</b> 24 Volt	<b>10B</b> US10B/613—Oil Rubbed Bronze <b>US3</b> US03/605—Bright Brass



## 9400, 9500, 9600, 9700, 9800

### Surface Mounted Electric Strikes for Rim Exit Devices

MODEL	DESCRIPTION	605	606	612	613	613E	628E	629	630	BSP
<b>9400</b>		\$642	\$629	\$629	\$629	\$588		\$642	\$554	\$588
<b>9400-LBM</b>	Latchbolt monitor	\$752	\$739	\$739	\$739	\$698		\$752	\$664	\$698
<b>9400-LBSM</b>	Latchbolt strike monitor	\$762	\$749	\$749	\$749	\$708		\$762	\$674	\$708
<b>9500</b>		\$742	\$729	\$729	\$729	\$688		\$742	\$654	\$688
<b>9500-LBM</b>	Latchbolt monitor	\$852	\$839	\$839	\$839	\$798		\$852	\$764	\$798
<b>9500-LBSM</b>	Latchbolt strike monitor	\$862	\$849	\$849	\$849	\$808		\$862	\$774	\$808
<b>9600</b>		\$642	\$629	\$629	\$629	\$588		\$642	\$554	\$588
<b>9600-LBM</b>	Latchbolt monitor	\$752	\$739	\$739	\$739	\$698		\$752	\$664	\$698
<b>9600-LBSM</b>	Latchbolt strike monitor	\$762	\$749	\$749	\$749	\$708		\$762	\$674	\$708
<b>9700</b>		\$742	\$729	\$729	\$729	\$688		\$742	\$654	\$688
<b>9700-LBM</b>	Latchbolt monitor	\$852	\$839	\$839	\$839	\$798		\$852	\$764	\$798
<b>9700-LBSM</b>	Latchbolt strike monitor	\$862	\$849	\$849	\$849	\$808		\$862	\$774	\$808
<b>9800</b>		\$742	\$729			\$688	\$688	\$742	\$654	\$688

### Accessories

ITEM	DESCRIPTION	PRICE
<b>9000-MTK</b>	Metal template installation kit	\$83
<b>SMB</b>	Surface mounting box	\$232

### Spacer Plates/ Brackets

MODEL	DESCRIPTION	613E	628	628E	630	BSP
<b>9000-108</b>	1/8" Spacer plate	\$48		\$48	\$34	\$48
<b>9000-116</b>	1/16" Spacer plate	\$48		\$48	\$34	\$48
<b>9000-ASB</b>	Aluminum spacer bracket	\$113	\$104			\$113

### How to Order Specify quantity and the following information. Order related products separately.

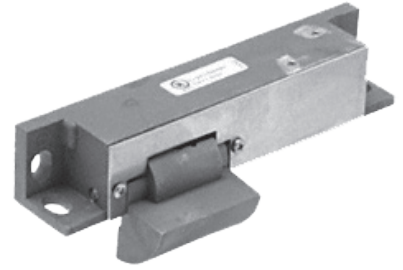
SERIES	FINISH	OPTION(S)
<b>9600</b>	<b>– 630</b>	<b>– LBM</b>
<b>9400</b> Surface Mounted Electric Strike for 1/2" Pullman Exit Device; no faceplates required	<b>605</b> Bright Brass <b>606</b> Satin Brass	<b>LBM</b> Latchbolt Monitor <b>LBSM</b> Latchbolt Strike Monitor
<b>9500</b> Surface Mounted Electric Strike for 3/4" Pullman, fire rated; no faceplates required	<b>612</b> Satin Bronze <b>613</b> Bronze Toned	
<b>9600</b> Surface Mounted Electric Strike for 3/4" Pullman Rim Exit Devices, non-fire rated; no faceplates required	<b>613E</b> Dark Oxidized Satin Bronze <b>629</b> Bright Stainless Steel	
<b>9700</b> Surface Mounted Electric Strike for Corbin Russwin SecureBolt® and Yale SquareBolt® Rim Exit Devices; no faceplates required	<b>628E*</b> Satin Aluminum Powder <b>630</b> Satin Stainless Steel	
<b>9800</b> Surface Mounted Electric Strike for Adams Rite® Starwheel and Interlocking Rim Exit Devices; no faceplates required	<b>BSP</b> Black Suede Powder	

\*Only Available on 9800



## Folger Adam SB:310-1(1/2) Electric Strike Bodies

ITEM	DESCRIPTION	PRICE
SB:310-1(1/2)-12D		\$597
SB:310-1(1/2)-24D		\$597
SB:310-1(1/2)-F-12D	Fail safe	\$597
SB:310-1(1/2)-F-24D	Fail safe	\$597
SB:310-1(1/2)-12D-LCBMA		\$749
SB:310-1(1/2)-24D-LCBMA		\$749
SB:310-1(1/2)-F-12D-LCBMA	Fail safe	\$749
SB:310-1(1/2)-F-24D-LCBMA	Fail safe	\$749



## Folger Adam SB:310-1(3/4) Electric Strike Bodies

ITEM	DESCRIPTION	PRICE
SB:310-1(3/4)-12D		\$597
SB:310-1(3/4)-24D		\$597
SB:310-1(3/4)-F-12D	Fail safe	\$597
SB:310-1(3/4)-F-24D	Fail safe	\$597
SB:310-1(3/4)-12D-LCBMA		\$749
SB:310-1(3/4)-24D-LCBMA		\$749
SB:310-1(3/4)-F-12D-LCBMA	Fail safe	\$749
SB:310-1(3/4)-F-24D-LCBMA	Fail safe	\$749

## Folger Adam SB:310-1(1) Electric Strike Bodies

ITEM	DESCRIPTION	PRICE
SB:310-1(1)-12D		\$597
SB:310-1(1)-24D		\$597
SB:310-1(1)-F-12D	Fail safe	\$597
SB:310-1(1)-F-24D	Fail safe	\$597
SB:310-1(1)-12D-LCBMA		\$749
SB:310-1(1)-24D-LCBMA		\$749
SB:310-1(1)-F-12D-LCBMA	Fail safe	\$749
SB:310-1(1)-F-24D-LCBMA	Fail safe	\$749

## Folger Adam SB:310-1(PK) Electric Strike Bodies

ITEM	DESCRIPTION	PRICE
SB:310-1(PK)-12D		\$597
SB:310-1(PK)-24D		\$597
SB:310-1(PK)-F-12D	Fail safe	\$597
SB:310-1(PK)-F-24D	Fail safe	\$597
SB:310-1(PK)-12D-LCBMA		\$749
SB:310-1(PK)-24D-LCBMA		\$749
SB:310-1(PK)-F-12D-LCBMA	Fail safe	\$749
SB:310-1(PK)-F-24D-LCBMA	Fail safe	\$749

## Folger Adam SB:310-1(SK) Electric Strike Bodies

ITEM	DESCRIPTION	PRICE
SB:310-1(SK)-12D		\$621
SB:310-1(SK)-24D		\$621
SB:310-1(SK)-F-12D	Fail safe	\$621
SB:310-1(SK)-F-24D	Fail safe	\$621
SB:310-1(SK)-12D-LCBMA		\$773
SB:310-1(SK)-24D-LCBMA		\$773
SB:310-1(SK)-F-12D-LCBMA	Fail safe	\$773
SB:310-1(SK)-F-24D-LCBMA	Fail safe	\$773

## How to Order Specify quantity and the following information. Order related products separately.

PREFIX	SERIES	KEEPER STYLE	FAIL SAFE/SECURE	VOLTAGE	OPTION(S)
SB	310-1	(3/4)	- F	- 24D	- LCBMA
<b>Strike BODY ONLY</b>					
SB Strike Body	310-1 Strike Body Only	(1/2) 1/2" keeper (3/4) 3/4" keeper (1) 1" keeper (PK) For use with 3/4" Pullman style latchbolts (SK) For use with Squarebolt® style rim exit devices	(blank) Fail Secure (Standard) F Fail Safe	12D 12 Volt 24D 24 Volt	LCBMA Latchbolt & locking cam monitor with auxiliary switch



## Folger Adam 310-2 Electric Strike for Latchbolt Locks

MODEL	DESCRIPTION	605	606	612	613	629	630
310-2-12D		\$886	\$851	\$851	\$803	\$886	\$762
310-2-24D		\$886	\$851	\$851	\$803	\$886	\$762
310-2-F-12D	Fail safe	\$886	\$851	\$851	\$803	\$886	\$762
310-2-F-24D	Fail safe	\$886	\$851	\$851	\$803	\$886	\$762
310-2-12D-LCBMA		\$1038	\$1002	\$1002	\$964	\$1038	\$913
310-2-24D-LCBMA		\$1038	\$1002	\$1002	\$964	\$1038	\$913
310-2-F-12D-LCBMA	Fail safe	\$1038	\$1002	\$1002	\$964	\$1038	\$913
310-2-F-24D-LCBMA	Fail safe	\$1038	\$1002	\$1002	\$964	\$1038	\$913

## Folger Adam 310-2 3/4 Electric Strike for Latchbolt Locks

MODEL	DESCRIPTION	605	606	612	613	629	630
310-2 3/4-12D		\$981	\$948	\$948	\$911	\$979	\$869
310-2 3/4-24D		\$981	\$948	\$948	\$911	\$979	\$869
310-2 3/4-F-12D	Fail safe	\$981	\$948	\$948	\$911	\$979	\$869
310-2 3/4-F-24D	Fail safe	\$981	\$948	\$948	\$911	\$979	\$869
310-2 3/4-12D-LCBMA		\$1144	\$1099	\$1099	\$1060	\$1130	\$1019
310-2 3/4-24D-LCBMA		\$1144	\$1099	\$1099	\$1060	\$1130	\$1019
310-2 3/4-F-12D-LCBMA	Fail safe	\$1144	\$1099	\$1099	\$1060	\$1130	\$1019
310-2 3/4-F-24D-LCBMA	Fail safe	\$1144	\$1099	\$1099	\$1060	\$1130	\$1019

## Folger Adam 310-2 3/4OB Electric Strike for Latchbolt Locks

MODEL	DESCRIPTION	605	606	612	613	629	630
310-2 3/4OB-12D		\$1201	\$1166	\$1166	\$1131	\$1201	\$1075
310-2 3/4OB-24D		\$1201	\$1166	\$1166	\$1131	\$1201	\$1075
310-2 3/4OB-F-12D	Fail safe	\$1201	\$1166	\$1166	\$1131	\$1201	\$1075
310-2 3/4OB-F-24D	Fail safe	\$1201	\$1166	\$1166	\$1131	\$1201	\$1075

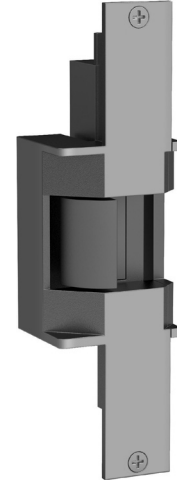
## Folger Adam 310-3-1 Electric Strike for Latchbolt Locks & Deadbolts

MODEL	DESCRIPTION	605	606	612	613	629	630
310-3-1-12D		\$1150	\$1132	\$1132	\$1094	\$1150	\$1089
310-3-1-24D		\$1150	\$1132	\$1132	\$1094	\$1150	\$1089
310-3-1-F-12D	Fail safe	\$1150	\$1132	\$1132	\$1094	\$1150	\$1089
310-3-1-F-24D	Fail safe	\$1150	\$1132	\$1132	\$1094	\$1150	\$1089
310-3-1-12D-LCBMA		\$1311	\$1283	\$1283	\$1246	\$1311	\$1240
310-3-1-24D-LCBMA		\$1311	\$1283	\$1283	\$1246	\$1311	\$1240
310-3-1-F-12D-LCBMA	Fail safe	\$1311	\$1283	\$1283	\$1246	\$1311	\$1240
310-3-1-F-24D-LCBMA	Fail safe	\$1311	\$1283	\$1283	\$1246	\$1311	\$1240

## How to Order Specify quantity and the following information. Order related products separately.

SERIES	FAIL SAFE/SECURE	VOLTAGE	FINISH	OPTION(S)
310-2	– F	– 24D	– 613	– LCBMA
<b>KEEPER STYLE</b>				
310-2 1/2" keeper standard; for up to a 5/8" throw latchbolt	(blank) Fail Secure (Standard)	12D 12 Volt	605 Bright Brass	LCBMA* Latchbolt & locking cam monitor with auxiliary switch
310-2 3/4 3/4" keeper standard; for up to a 3/4" throw latchbolt without deadbolt	F Fail Safe	24D 24 Volt	606 Satin Brass	
310-2 3/4OB* 3/4" keeper standard; for a pair of doors without a door coordinator			612 Satin Bronze	
310-3-1 1" keeper standard; for up to a 3/4" throw latchbolt and a 1" deadbolt			613 Bronze Toned	
			629 Bright Stainless Steel	
			630 Satin Stainless Steel	

\*LCBMA not available with 310-2 3/4OB.



## Faceplates

MODEL	605	606	612	613	629	630
FP-310-2	\$279	\$243	\$243	\$206	\$279	\$165

## Faceplates

MODEL	605	606	612	613	629	630
FP-310-2-34	\$383	\$351	\$351	\$313	\$381	\$271

## Faceplates

MODEL	605	606	612	613	629	630
FP-310-2-34OB	\$590	\$558	\$563	\$522	\$590	\$476

## Faceplates

MODEL	605	606	612	613	629	630
FP-310-3-1	\$551	\$523	\$523	\$486	\$551	\$492

## How to Order

PREFIX	SERIES	FINISH
FP	– 310-2 3/4OB	– 630
<b>FACEPLATE ONLY</b>		
FP Faceplate	310-2 1/2" keeper standard; for up to a 5/8" throw latchbolt	605 Bright Brass 606 Satin Brass
	310-2 3/4 3/4" keeper standard; for up to a 3/4" throw latchbolt without deadbolt	612 Satin Bronze 613 Bronze Toned
	310-2 3/4OB 3/4" keeper standard; for a pair of doors without a door coordinator	629 Bright Stainless Steel 630 Satin Stainless Steel
	310-3-1 1" keeper standard; for up to a 3/4" throw latchbolt and a 1" deadbolt	

## Folger Adam 310-4

### Electric Strike for Pullman Rim Exit Devices

MODEL	DESCRIPTION	605	606	612	613	629	630
310-4-12D		\$915	\$881	\$881	\$840	\$915	\$797
310-4-24D		\$915	\$881	\$881	\$840	\$915	\$797
310-4-F-12D	Fail safe	\$915	\$881	\$881	\$840	\$915	\$797
310-4-F-24D	Fail safe	\$915	\$881	\$881	\$840	\$915	\$797
310-4-12D-LCBMA		\$1074	\$1031	\$1031	\$990	\$1074	\$946
310-4-24D-LCBMA		\$1074	\$1031	\$1031	\$990	\$1074	\$946
310-4-F-12D-LCBMA	Fail safe	\$1074	\$1031	\$1031	\$990	\$1074	\$946
310-4-F-24D-LCBMA	Fail safe	\$1074	\$1031	\$1031	\$990	\$1074	\$946

## Folger Adam 310-4(S)

### Electric Strike for Squarebolt® Rim Exit Device

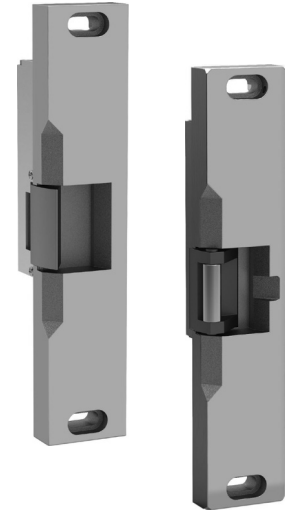
MODEL	DESCRIPTION	605	606	612	613	629	630
310-4(S)-12D		\$960	\$926	\$926	\$888	\$960	\$846
310-4(S)-24D		\$960	\$926	\$926	\$888	\$960	\$846
310-4(S)-F-12D	Fail safe	\$960	\$926	\$926	\$888	\$960	\$846
310-4(S)-F-24D	Fail safe	\$960	\$926	\$926	\$888	\$960	\$846
310-4(S)-12D-LCBMA		\$1121	\$1088	\$1088	\$1047	\$1121	\$996
310-4(S)-24D-LCBMA		\$1121	\$1088	\$1088	\$1047	\$1121	\$996
310-4(S)-F-12D-LCBMA	Fail safe	\$1121	\$1088	\$1088	\$1047	\$1121	\$996
310-4(S)-F-24D-LCBMA	Fail safe	\$1121	\$1088	\$1088	\$1047	\$1121	\$996

## How to Order

Specify quantity and the following information. Order related products separately.

SERIES	FAIL SAFE/SECURE	VOLTAGE	FINISH	OPTION(S)
310-4 (S)	– F	– 24D	– 613	– LCBMA
<b>KEEPER STYLE</b>				
310-4 PK keeper standard; for use with 3/4" Pullman style latchbolts	(blank) Fail Secure (Standard)	12D 12 Volt 24D 24 Volt	605 Bright Brass 606 Satin Brass 612 Satin Bronze 613 Bronze Toned 629 Bright Stainless Steel 630 Satin Stainless Steel	LCBMA* Latchbolt & locking cam monitor with auxiliary switch
310-4(S) SK keeper standard; for use with Squarebolt® style rim exit devices	F Fail Safe			

\*LCBMA not available with 310-2 3/4OB.



## Faceplates

MODEL	605	606	612	613	629	630
FP-310-4	\$317	\$284	\$284	\$241	\$317	\$198

## Faceplates

MODEL	605	606	612	613	629	630
FP-310-4-SK	\$346	\$316	\$316	\$276	\$346	\$232

## How to Order

PREFIX	SERIES	KEEPER STYLE	FINISH
FP	– 310-4	(SK)	– 630
<b>FACEPLATE ONLY</b>			
FP Faceplate	310-4	(Blank) Keeper standard; for use with 3/4" Pullman style latchbolts (SK) For use with Squarebolt® style rim exit devices	605 Bright Brass 606 Satin Brass 612 Satin Bronze 613 Bronze Toned 629 Bright Stainless Steel 630 Satin Stainless Steel

## Folger Adam 310-4-1

## Electric Strike for Surface Vertical Rods

MODEL	DESCRIPTION	605	606	612	613	629	630
310-4-1-12D		\$1553	\$1514	\$1514	\$1490	\$1553	\$1490
310-4-1-24D		\$1553	\$1514	\$1514	\$1490	\$1553	\$1490
310-4-1-F-12D	Fail safe	\$1553	\$1514	\$1514	\$1490	\$1553	\$1490
310-4-1-F-24D	Fail safe	\$1553	\$1514	\$1514	\$1490	\$1553	\$1490
310-4-1-12D-LCBMA		\$1825	\$1783	\$1783	\$1758	\$1825	\$1758
310-4-1-24D-LCBMA		\$1825	\$1783	\$1783	\$1758	\$1825	\$1758
310-4-1-F-12D-LCBMA	Fail safe	\$1825	\$1783	\$1783	\$1758	\$1825	\$1758
310-4-1-F-24D-LCBMA	Fail safe	\$1825	\$1783	\$1783	\$1758	\$1825	\$1758

## Folger Adam 310-4-2

## Electric Strike for Surface Vertical Rods

MODEL	DESCRIPTION	605	606	612	613	629	630
310-4-2-12D		\$1553	\$1514	\$1514	\$1490	\$1553	\$1490
310-4-2-24D		\$1553	\$1514	\$1514	\$1490	\$1553	\$1490
310-4-2-F-12D	Fail safe	\$1553	\$1514	\$1514	\$1490	\$1553	\$1490
310-4-2-F-24D	Fail safe	\$1553	\$1514	\$1514	\$1490	\$1553	\$1490
310-4-2-12D-LCBMA		\$1825	\$1783	\$1783	\$1758	\$1825	\$1758
310-4-2-24D-LCBMA		\$1825	\$1783	\$1783	\$1758	\$1825	\$1758
310-4-2-F-12D-LCBMA	Fail safe	\$1825	\$1783	\$1783	\$1758	\$1825	\$1758
310-4-2-F-24D-LCBMA	Fail safe	\$1825	\$1783	\$1783	\$1758	\$1825	\$1758

## Folger Adam 310-4-3

## Electric Strike for Surface Vertical Rods

MODEL	DESCRIPTION	605	606	612	613	629	630
310-4-3-12D		\$1627	\$1589	\$1589	\$1561	\$1627	\$1561
310-4-3-24D		\$1627	\$1589	\$1589	\$1561	\$1627	\$1561
310-4-3-F-12D	Fail safe	\$1627	\$1589	\$1589	\$1561	\$1627	\$1561
310-4-3-F-24D	Fail safe	\$1627	\$1589	\$1589	\$1561	\$1627	\$1561
310-4-3-12D-LCBMA		\$1896	\$1859	\$1859	\$1829	\$1896	\$1829
310-4-3-24D-LCBMA		\$1896	\$1859	\$1859	\$1829	\$1896	\$1829
310-4-3-F-12D-LCBMA	Fail safe	\$1896	\$1859	\$1859	\$1829	\$1896	\$1829
310-4-3-F-24D-LCBMA	Fail safe	\$1896	\$1859	\$1859	\$1829	\$1896	\$1829

## Folger Adam 310-4-30

## Electric Strike for Surface Vertical Rods

MODEL	DESCRIPTION	605	606	612	613	629	630
310-4-30-12D		\$1627	\$1589	\$1589	\$1561	\$1627	\$1561
310-4-30-24D		\$1627	\$1589	\$1589	\$1561	\$1627	\$1561
310-4-30-F-12D	Fail safe	\$1627	\$1589	\$1589	\$1561	\$1627	\$1561
310-4-30-F-24D	Fail safe	\$1627	\$1589	\$1589	\$1561	\$1627	\$1561
310-4-30-12D-LCBMA		\$1896	\$1859	\$1859	\$1829	\$1896	\$1829
310-4-30-24D-LCBMA		\$1896	\$1859	\$1859	\$1829	\$1896	\$1829
310-4-30-F-12D-LCBMA	Fail safe	\$1896	\$1859	\$1859	\$1829	\$1896	\$1829
310-4-30-F-24D-LCBMA	Fail safe	\$1896	\$1859	\$1859	\$1829	\$1896	\$1829

How to Order *Specify quantity and the following information. Order related products separately.*

SERIES	FAIL SAFE/SECURE	VOLTAGE	FINISH	OPTION(S)
310-4-X	F	– 24D	– 612	–LCBMA
ROD SPACING				
1 For use with vertical rod spacing between 4" and 4-3/4"	(blank) Fail Secure (Standard)	12D 12 Volt	605 Bright Brass	LCBMA Latchbolt & locking cam monitor with auxiliary switch
2 For use with vertical rod spacing between 4-5/8" and 5-3/8"		24D 24 Volt	606 Satin Brass	
3 For use with vertical rod spacing between 5-1/4" and 6"	F Fail Safe		612 Satin Bronze	
30 For use with vertical rod spacing between 2-5/8" and 3-3/8"			613 Bronze Toned	
			629 Bright Stainless Steel	
			630 Satin Stainless Steel	



**INSTALLATION NOTE:** Double-door models are available with four different center-to-center dimensions between latchbolt keepers. Keepers are wide enough to compensate for vertical rod exit bolts, which may be as much as 3/8" (10 mm) off center-to-center dimension, either way. When using an electric strike in conjunction with a vertical rod exit device, it is necessary that:

1. The bottom rod of the exit device be removed or made inoperative
2. The latchbolt of the exit device be the "Pullman" or beveled type
3. The latchbolt be free-latching and remain projected while the door is open. Mechanisms that hold the latchbolt retracted while the door is open, and automatically release it when the door is closed, must be removed or made inoperative.

## Faceplates

MODEL	605	606	612	613	629	630
FP-310-4-1	\$461	\$420	\$420	\$412	\$461	\$412

## Faceplates

MODEL	605	606	612	613	629	630
FP-310-4-2	\$461	\$420	\$420	\$412	\$461	\$412

## Faceplates

MODEL	605	606	612	613	630
FP-310-4-3	\$532	\$494	\$494	\$482	\$482

## Faceplates

MODEL	605	606	612	613	630
FP-310-4-30	\$532	\$494	\$494	\$482	\$482

## How to Order

PREFIX	SERIES	FINISH
FP	– 310-4-X	– 630
FACEPLATE ONLY		
FP Faceplate	1 For use with vertical rod spacing between 4" and 4-3/4"	605 Bright Brass
	2 For use with vertical rod spacing between 4-5/8" and 5-3/8"	606 Satin Brass
	30 For use with vertical rod spacing between 2-5/8" and 3-3/8"	612 Satin Bronze
		613 Bronze Toned
		629 Bright Stainless Steel
		630 Satin Stainless Steel

## Folger Adam 310-6-1

### Electric Strike for Concealed Vertical Rods

MODEL	DESCRIPTION	612	627
310-6-1-12D		\$1751	\$1503
310-6-1-24D		\$1751	\$1503
310-6-1-F-12D	Fail safe	\$1751	\$1503
310-6-1-F-24	Fail safe	\$1751	\$1503
310-6-1-12D-LCBMA		\$2018	\$1786
310-6-1-24D-LCBMA		\$2018	\$1786
310-6-1-F-12D-LCBMA	Fail safe	\$2018	\$1786
310-6-1-F-24D-LCBMA	Fail safe	\$2018	\$1786



**INSTALLATION NOTE:** Double-door models are available with four different center-to-center dimensions between latchbolt keepers. Keepers are wide enough to compensate for vertical rod exit bolts, which may be as much as 3/8" (10 mm) off center-to-center dimension, either way. When using an electric strike in conjunction with a vertical rod exit device, it is necessary that:

1. The bottom rod of the exit device be removed or made inoperative
2. The latchbolt of the exit device be the "Pullman" or beveled type
3. The latchbolt be free-latching and remain projected while the door is open. Mechanisms that hold the latchbolt retracted while the door is open, and automatically release it when the door is closed, must be removed or made inoperative.

## Folger Adam 310-6-2

### Electric Strike for Concealed Vertical Rods

MODEL	DESCRIPTION	612	627
310-6-2-12D		\$1751	\$1503
310-6-2-24D		\$1751	\$1503
310-6-2-F-12D	Fail safe	\$1751	\$1503
310-6-2-F-24D	Fail safe	\$1751	\$1503
310-6-2-12D-LCBMA		\$2018	\$1786
310-6-2-24D-LCBMA		\$2018	\$1786
310-6-2-F-12D-LCBMA	Fail safe	\$2018	\$1786
310-6-2-F-24D-LCBMA	Fail safe	\$2018	\$1786

## Folger Adam 310-6-3

### Electric Strike for Concealed Vertical Rods

MODEL	612	627
310-6-3-12D	\$1751	\$1503
310-6-3-24D	\$1751	\$1503
310-6-3-F-12D	\$1751	\$1503
310-6-3-F-24D	\$1751	\$1503
310-6-3-12D-LCBMA	\$2018	\$1786
310-6-3-24D-LCBMA	\$2018	\$1786
310-6-3-F-12D-LCBMA	\$2018	\$1786
310-6-3-F-24D-LCBMA	\$2018	\$1786

## Folger Adam 310-6-8 Electric Strike for Concealed Vertical Rods

MODEL	DESCRIPTION	612	627
310-6-8-12D		\$1751	\$1503
310-6-8-24D		\$1751	\$1503
310-6-8-F-12D	Fail safe	\$1751	\$1503
310-6-8-F-24D	Fail safe	\$1751	\$1503
310-6-8-12D-LCBMA		\$2018	\$1786
310-6-8-24D-LCBMA		\$2018	\$1786
310-6-8-F-12D-LCBMA	Fail safe	\$2018	\$1786
310-6-8-F-24D-LCBMA	Fail safe	\$2018	\$1786

## Folger Adam 310-6-30 Electric Strike for Concealed Vertical Rods

MODEL	DESCRIPTION	612	627
310-6-30-12D		\$1751	\$1503
310-6-30-24D		\$1751	\$1503
310-6-30-F-12D	Fail safe	\$1751	\$1503
310-6-30-F-24D	Fail safe	\$1751	\$1503
310-6-30-12D-LCBMA		\$2018	\$1786
310-6-30-24D-LCBMA		\$2018	\$1786
310-6-30-F-12D-LCBMA	Fail safe	\$2018	\$1786
310-6-30-F-24D-LCBMA	Fail safe	\$2018	\$1786

How to Orders & Faceplates on next page

## Folger Adam 310-6-1— 310-6-30 Electric Strikes for Concealed Vertical Rods **Continued**



**How to Order** Specify quantity and the following information. Order related products separately.

SERIES	KEEPER STYLE	FAIL SAFE/SECURE	VOLTAGE	FINISH	OPTION(S)
<b>310-6-X</b>	<b>(PK)</b>	<b>– F</b>	<b>– 24D</b>	<b>– 627</b>	<b>– LCBMA</b>
<b>ROD SPACING</b>					
<b>1</b> For use with vertical rod spacing between 4" and 4-3/4"	<b>(PK)</b> For use with 3/4" Pullman style latchbolts	<b>(blank)</b> Fail Secure (Standard) <b>F</b> Fail Safe	<b>12D</b> 12 Volt	<b>612</b> Satin Bronze	<b>LCBMA</b> Latchbolt & locking cam monitor with auxiliary switch
<b>2</b> For use with vertical rod spacing between 4-5/8" and 5-3/8"					
<b>3</b> For use with vertical rod spacing between 5-1/4" and 6"			<b>24D</b> 24 Volt	<b>627</b> Satin Aluminum	
<b>8</b> For only the active leaf of a pair of doors					
<b>30</b> For use with vertical rod spacing between 2-5/8" and 3-3/8"					

### Faceplates

MODEL	612	627
<b>FP-310-6-1</b>	\$672	\$423

### Faceplates

MODEL	612	627
<b>FP-310-6-30</b>	\$672	\$423

### Faceplates

MODEL	612	627
<b>FP-310-6-2</b>	\$672	\$423

### Faceplates

MODEL	612	627
<b>FP-310-6-3</b>	\$672	\$423

### Faceplates

MODEL	612	627
<b>FP-310-6-8</b>	\$672	\$423

### How to Order

PREFIX	SERIES	KEEPER STYLE	FINISH
<b>FP</b>	<b>– 310-6-X</b>	<b>(PK)</b>	<b>– 630</b>
<b>FACEPLATE ONLY</b>			
<b>FP</b> Faceplate	<b>1</b> For use with vertical rod spacing between 4" and 4-3/4" <b>2</b> For use with vertical rod spacing between 4-5/8" and 5-3/8" <b>3</b> For use with vertical rod spacing between 5-1/4" and 6" <b>8</b> For only the active leaf of a pair of doors <b>30</b> For use with vertical rod spacing between 2-5/8" and 3-3/8"	<b>(PK)</b> For use with 3/4" Pullman style latchbolts	<b>612</b> Satin Bronze <b>627</b> Satin Aluminum

## Folger Adam SB:310-1-1 Electric Strike Bodies

MODEL	DESCRIPTION	630
SB:310-1-1-12D		\$1004
SB:310-1-1-24D		\$1004
SB:310-1-1-F-12D	Fail safe	\$1004
SB:310-1-1-F-24D	Fail safe	\$1004
SB:310-1-1-12D-LCBMA		\$1294
SB:310-1-1-24D-LCBMA		\$1294
SB:310-1-1-F-12D-LCBMA	Fail safe	\$1294
SB:310-1-1-F-24D-LCBMA	Fail safe	\$1294

## Folger Adam SB:310-1-2 Electric Strike Bodies

MODEL	DESCRIPTION	630
SB:310-1-2-12D		\$1004
SB:310-1-2-24D		\$1004
SB:310-1-2-F-12D	Fail safe	\$1004
SB:310-1-2-F-24D	Fail safe	\$1004
SB:310-1-2-12D-LCBMA		\$1294
SB:310-1-2-24D-LCBMA		\$1294
SB:310-1-2-F-12D-LCBMA	Fail safe	\$1294
SB:310-1-2-F-24D-LCBMA	Fail safe	\$1294

## Folger Adam SB:310-1-3 Electric Strike Bodies

MODEL	DESCRIPTION	630
SB:310-1-3-12D		\$1004
SB:310-1-3-24D		\$1004
SB:310-1-3-F-12D	Fail safe	\$1004
SB:310-1-3-F-24D	Fail safe	\$1004
SB:310-1-3-12D-LCBMA		\$1294
SB:310-1-3-24D-LCBMA		\$1294
SB:310-1-3-F-12D-LCBMA	Fail safe	\$1294
SB:310-1-3-F-24D-LCBMA	Fail safe	\$1294

## Folger Adam SB:310-1-30 Electric Strike Bodies

MODEL	DESCRIPTION	630
SB:310-1-30-12D		\$1004
SB:310-1-30-24D		\$1004
SB:310-1-30-F-12D	Fail safe	\$1004
SB:310-1-30-F-24D	Fail safe	\$1004
SB:310-1-30-12D-LCBMA		\$1294
SB:310-1-30-24D-LCBMA		\$1294
SB:310-1-30-F-24D-LCBMA	Fail safe	\$1294
SB:310-1-30-F-12D-LCBMA	Fail safe	\$1294

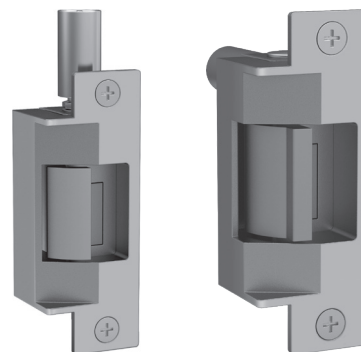
## How to Order Specify quantity and the following information. Order related products separately.

PREFIX	SERIES	ROD SPACING	KEEPER STYLE	FAIL SAFE/SECURE	VOLTAGE	OPTION(S)
<b>SB</b>	<b>– 310-1</b>	<b>– 1</b>	<b>(PK)</b>	<b>– F</b>	<b>– 24D</b>	<b>– LCBMA</b>
<b>STRIKE BODY ONLY</b>						
<b>SB</b> Strike Body	<b>310-1</b> Strike Body Only	<b>1</b> For use with vertical rod spacing between 4" and 4-3/4" <b>2</b> For use with vertical rod spacing between 4-5/8" and 5-3/8" <b>3</b> For use with vertical rod spacing between 5-1/4" and 6" <b>30</b> For use with vertical rod spacing between 2-5/8" and 3-3/8"	<b>(PK)</b> For use with Pullman style latchbolts	<b>(blank)</b> Fail Secure (Standard) <b>F</b> Fail Safe	<b>12D</b> 12 Volt <b>24D</b> 24 Volt	<b>LCBMA</b> Latchbolt & locking cam monitor with auxiliary switch



## Folger Adam 712 Electric Strike for Latchbolt Locks

MODEL	DESCRIPTION	605	606	612	613	629	630
712-12D		\$838	\$805	\$805	\$763	\$805	\$719
712-24D		\$838	\$805	\$805	\$763	\$805	\$719
712-F-12D	Fail safe	\$838	\$805	\$805	\$763	\$805	\$719
712-F-24D	Fail safe	\$838	\$805	\$805	\$763	\$805	\$719
712-12D-LBMLCM		\$992	\$958	\$958	\$915	\$958	\$873
712-24D-LBMLCM		\$992	\$958	\$958	\$915	\$958	\$873
712-F-12D-LBMLCM	Fail safe	\$992	\$958	\$958	\$915	\$958	\$873
712-F-24D-LBMLCM	Fail safe	\$992	\$958	\$958	\$915	\$958	\$873



## Folger Adam 712-75 Electric Strike for Latchbolt Locks

MODEL	DESCRIPTION	605	606	612	613	629	630
712-75-12D		\$868	\$831	\$831	\$795	\$831	\$748
712-75-24D		\$868	\$831	\$831	\$795	\$831	\$748
712-75-F-12D	Fail safe	\$868	\$831	\$831	\$795	\$831	\$748
712-75-F-24D	Fail safe	\$868	\$831	\$831	\$795	\$831	\$748
712-75-12D-LBMLCM		\$1021	\$983	\$983	\$947	\$983	\$903
712-75-24D-LBMLCM		\$1021	\$983	\$983	\$947	\$983	\$903
712-75-F-12D-LBMLCM	Fail safe	\$1021	\$983	\$983	\$947	\$983	\$903
712-75-F-24D-LBMLCM	Fail safe	\$1021	\$983	\$983	\$947	\$983	\$903

## Folger Adam 732 Electric Strike for Latchbolt Locks

MODEL	DESCRIPTION	605	606	612	613	629	630
732-12D		\$838	\$805	\$805	\$763	\$805	\$719
732-24D		\$838	\$805	\$805	\$763	\$805	\$719
732-F-12D	Fail safe	\$838	\$805	\$805	\$763	\$805	\$719
732-F-24D	Fail safe	\$838	\$805	\$805	\$763	\$805	\$719
732-12D-LBMLCM		\$992	\$958	\$958	\$915	\$958	\$873
732-24D-LBMLCM		\$992	\$958	\$958	\$915	\$958	\$873
732-F-12D-LBMLCM	Fail safe	\$992	\$958	\$958	\$915	\$958	\$873
732-F-24D-LBMLCM	Fail safe	\$992	\$958	\$958	\$915	\$958	\$873

## Folger Adam 732-75 Electric Strike for Latchbolt Locks

MODEL	DESCRIPTION	605	606	612	613	629	630
732-75-12D		\$868	\$831	\$831	\$795	\$831	\$748
732-75-24D		\$868	\$831	\$831	\$795	\$831	\$748
732-75-F-12D	Fail safe	\$868	\$831	\$831	\$795	\$831	\$748
732-75-F-24D	Fail safe	\$868	\$831	\$831	\$795	\$831	\$748
732-75-12D-LBMLCM		\$1021	\$983	\$983	\$947	\$983	\$903
732-75-24D-LBMLCM		\$1021	\$983	\$983	\$947	\$983	\$903
732-75-F-12D-LBMLCM	Fail safe	\$1021	\$983	\$983	\$947	\$983	\$903
732-75-F-24D-LBMLCM	Fail safe	\$1021	\$983	\$983	\$947	\$983	\$903

**700 & 742 Series | LBMLCM:** When using LBMLCM with a SARGENT 78/8200 Series or BEST 40 Series Mortise Lock, a 1/2" or 5/8" keeper latchbolt detection will be dependent on the door gap in order to ensure functionality. Consult customer support regarding use with other manufacturers.

**712-75, 732-75 and 742-75:** The LBMLCM option is compatible with SARGENT 78/8200 Series or BEST 40 Series 3/4" throw mortise lock latchbolts in hollow metal and wood frame applications. Monitoring capabilities are dependent on a maximum 1/8" door gap in order to ensure functionality. Consult customer support regarding use with other manufacturers.

### Faceplates

MODEL	605	606	612	613	629	630
FP-712	\$273	\$241	\$241	\$199	\$241	\$155
FP-712-75	\$303	\$266	\$266	\$231	\$266	\$183

### How to Order

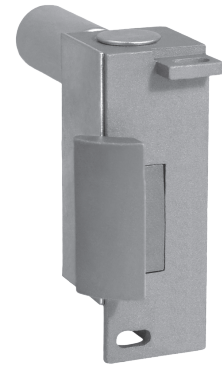
PREFIX	SERIES	FINISH
FP	- 732-75	- 613
FACEPLATE ONLY		
FP Faceplate	712 1/2" PK keeper standard; Hollow metal frames, for up to a 5/8" throw latchbolt	605 Bright Brass 606 Satin Brass
	712-75 3/4" PK keeper standard; Hollow metal frames, for up to a 3/4" throw latchbolt without deadbolt	612 Satin Bronze 613 Bronze Toned
	732 PK keeper standard; Wood frames, for up to a 5/8" throw latchbolt	629 Bright Stainless Steel
	732-75 3/4" PK keeper standard; Wood frames, for up to a 3/4" throw latchbolt without deadbolt	630 Satin Stainless Steel

### How to Order

*Specify quantity and the following information. Order related products separately.*

SOLENOID ORIENTATION	KEEPER STYLE	FAIL SAFE/SECURE	VOLTAGE	FINISH	OPTION(S)
712		- F	- 24D	- 630	- LBMLCM
712 Vertical for hollow metal frames	(blank) 1/2" PK Keeper for up to 5/8" latchbolt	(blank) Fail Secure (Standard)	12D 12 Volt 24D 24 Volt	605 Bright Brass 606 Satin Brass 612 Satin Bronze 613 Bronze Toned 629 Bright Stainless Steel 630 Satin Stainless Steel	LBMLCM Latchbolt & locking cam monitor
732 Horizontal for wood and concrete frames	-75 3/4" PK keeper for up to a 3/4" throw latchbolt without deadbolt	F Fail Safe			





## Folger Adam SB:710 Electric Strike Bodies

MODEL	DESCRIPTION	630
SB:710-12D		\$565
SB:710-24D		\$565
SB:710-F-12D	Fail safe	\$565
SB:710-F-24D	Fail safe	\$565
SB:710-12D-LBMLCM		\$717
SB:710-24D-LBMLCM		\$717
SB:710-F-12D-LBMLCM	Fail safe	\$717
SB:710-F-24D-LBMLCM	Fail safe	\$717

## Folger Adam SB:710-75 Electric Strike Bodies

MODEL	DESCRIPTION	630
SB:710-75-12D		\$565
SB:710-75-24D		\$565
SB:710-75-F-12D	Fail safe	\$565
SB:710-75-F-24D	Fail safe	\$565
SB:710-75-12D-LBMLCM		\$717
SB:710-75-24D-LBMLCM		\$717
SB:710-75-F-12D-LBMLCM	Fail safe	\$717
SB:710-75-F-24D-LBMLCM	Fail safe	\$717

**INSTALLATION NOTE:** Double-door models are available with four different center-to-center dimensions between latchbolt keepers. Keepers are wide enough to compensate for vertical rod exit bolts, which may be as much as 3/8" (10 mm) off center-to-center dimension, either way. When using an electric strike in conjunction with a vertical rod exit device, it is necessary that:

1. The bottom rod of the exit device be removed or made inoperative.
2. The latchbolt of the exit device be the "Pullman" or beveled type.
3. The latchbolt be free-latching and remain projected while the door is open. Mechanisms that hold the latchbolt retracted while the door is open, and automatically release it when the door is closed, must be removed or made inoperative.

## Folger Adam SB:730 Electric Strike Bodies

MODEL	DESCRIPTION	630
SB:730-12D		\$565
SB:730-24D		\$565
SB:730-F-12D	Fail safe	\$565
SB:730-F-24D	Fail safe	\$565
SB:730-12D-LBMLCM		\$717
SB:730-24D-LBMLCM		\$717
SB:730-F-12D-LBMLCM	Fail safe	\$717
SB:730-F-24D-LBMLCM	Fail safe	\$717

## Folger Adam SB:730-75 Electric Strike Bodies

MODEL	DESCRIPTION	630
SB:730-75-12D		\$565
SB:730-75-24D		\$565
SB:730-75-F-12D	Fail safe	\$565
SB:730-75-F-24D	Fail safe	\$565
SB:730-75-12D-LBMLCM		\$717
SB:730-75-24D-LBMLCM		\$717
SB:730-75-F-12D-LBMLCM	Fail safe	\$717
SB:730-75-F-24D-LBMLCM	Fail safe	\$717

## How to Order Specify quantity and the following information. Order related products separately.

PREFIX	SOLENOID ORIENTATION	KEEPER STYLE	FAIL SAFE/SECURE	VOLTAGE	OPTION(S)
SB	710		- F	- 24D	- LBMLCM
SB Strike Body Only	<b>710</b> Vertical for hollow metal frames	<b>(blank)</b> 1/2" PK Keeper for up to 5/8" latchbolt	<b>(blank)</b> Fail Secure (Standard)	<b>12D</b> 12 Volt <b>24D</b> 24 Volt	<b>LBMLCM</b> Latchbolt & locking cam monitor
	<b>730</b> Horizontal for wood and concrete frames	<b>-75</b> 3/4" PK keeper for up to a 3/4" throw latchbolt without deadbolt	<b>F</b> Fail Safe		

## Folger Adam 742-75 Complete Pacs for Latchbolt Locks

MODEL	DESCRIPTION	605	606	612	613	629	630
742-75-12D		\$897	\$862	\$862	\$820	\$862	\$778
742-75-24D		\$897	\$862	\$862	\$820	\$862	\$778
742-75-F-12D	Fail safe	\$897	\$862	\$862	\$820	\$862	\$778
742-75-F-24D	Fail safe	\$897	\$862	\$862	\$820	\$862	\$778
742-75-12D-LBMLCM		\$1049	\$1014	\$1014	\$972	\$1014	\$929
742-75-24D-LBMLCM		\$1049	\$1014	\$1014	\$972	\$1014	\$929
742-75-F-12D-LBMLCM	Fail safe	\$1049	\$1014	\$1014	\$972	\$1014	\$929
742-75-F-24D-LBMLCM	Fail safe	\$1049	\$1014	\$1014	\$972	\$1014	\$929



## How to Order Complete Pacs

Specify quantity and the following information. Order related products separately.

SERIES	FAIL SAFE/SECURE	VOLTAGE	FINISH	OPTION(S)
742-75	-F	-12D	-613	-LBMLCM
<b>SOLENOID ORIENTATION</b>				
742-75	(blank) Fail Secure (Standard)	12D 12 Volt	605 Bright Brass	LBMLCM
Vertical for hollow metal frames, up to 3/4" latchbolt without deadbolt	F Fail Safe	24D 24 Volt	606 Satin Brass	Latchbolt & locking cam monitor
			612 Satin Bronze	
			613 Bronze Toned	
			629 Bright Stainless Steel	
			630 Satin Stainless Steel	

## Faceplates

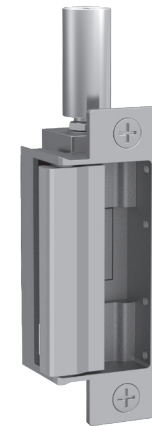
MODEL	605	606	612	613	629	630
FP-742	\$291	\$255	\$255	\$213	\$255	\$172

## How to Order Faceplate Only

PREFIX	SERIES	FINISH
FP	-742-75	-630
FP Faceplate	742-75 Hollow metal frames, for up to a 3/4" throw latchbolt without deadbolt	605 Bright Brass 606 Satin Brass 612 Satin Bronze 613 Bronze Toned 629 Bright Stainless Steel 630 Satin Stainless Steel

## Folger Adam SB740-75 Electric Strike Bodies

MODEL	DESCRIPTION	630
SB:740-75-12D		\$607
SB:740-75-24D		\$607
SB:740-75-F-12D	Fail safe	\$607
SB:740-75-F-24D	Fail safe	\$607
SB:740-75-12D-LBMLCM		\$759
SB:740-75-24D-LBMLCM		\$759
SB:740-75-F-12D-LBMLCM	Fail safe	\$759
SB:740-75-F-24D-LBMLCM	Fail safe	\$759



## How to Order

Specify quantity and the following information. Order related products separately.

PREFIX	SERIES	FAIL SAFE/SECURE	VOLTAGE	OPTION(S)
SB	740-75	—	-24D	—
<b>STRIKE BODY ONLY</b>				
SB Strike Body	740-75	(blank) Fail Secure (Standard)	12D 12 Volt	LBMLCM
		F Fail Safe	24D 24 Volt	Latchbolt & locking cam monitor

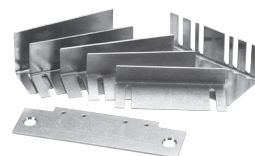
**700 & 742 Series | LBMLCM:** When using LBMLCM with a SARGENT 78/8200 Series or BEST 40 Series Mortise Lock, a 1/2" or 5/8" keeper latchbolt detection will be dependent on the door gap in order to ensure functionality. Consult customer support regarding use with other manufacturers.

**712-75, 732-75 and 742-75:** The LBMLCM option is compatible with SARGENT 78/8200 Series or BEST 40 Series 3/4" throw mortise lock latchbolts in hollow metal and wood frame applications. Monitoring capabilities are dependent on a maximum 1/8" door gap in order to ensure functionality. Consult customer support regarding use with other manufacturers.

# Electric Strike Accessories

## Electric Strike Accessories

ITEM	DESCRIPTION	PRICE
<b>HESCUT-MTK</b>	For installing the 1006, 1500, 1600, 4500, 5000, 5200, 7000, and 7501 electric strikes (4-7/8" ANSI jamb preparations only)	\$81
<b>9000-MTK</b>	Metal template installation kit	\$83
<b>SMB</b>	Surface mounting box	\$232
<b>150</b>	Stainless steel. Installed at the edge of the door to cover the lock and electric strike. Available in 626 finish only	\$94
<b>152</b>	Mount inside hollow metal and aluminum jambs	\$27
<b>157</b>	Torx screws	\$15
<b>157D</b>	Tamper-Resistant Torx R20 insert bit	\$43
<b>310-2-3</b>	Designed to prevent tampering with the latchbolt as well as the latchbolt keeper. Prevents one door from being open before the other	\$227
<b>2001-1</b>	Converts AC to unfiltered DC. Rated 35 V, 2 Amp. Not recommended for 1006 Electric Strike	\$40
<b>2001M</b>	Converts AC to unfiltered DC. Rated 35 V, 1 Amp. Includes MOV and self-resettable fuse. Not recommended for 1006 Electric Strike.	\$70
<b>2004M</b>	Adapter between existing HES electric strikes and ElectroLynx® connectors	\$42
<b>2005M3</b>	In-line power controller able to receive input voltages from 12–32V AC or DC. Built-in bridge rectifier. Reduces initial voltage by 25% to extend the life of the electric strike. Includes built-in resettable fuse, MOV, voltage regulation and input voltage level indicating and unit status. Addition of Smart Pac® III to any Electric Strike extends the 5-year no-fault warranty to a 10-year no-fault warranty. For use with 1006, input voltage must be DC	\$107
<b>2006M</b>	Audible operation indicator at 24VDC, 75db at 11-3/4"	\$53
<b>2007M</b>	With 4" wire leads	\$22



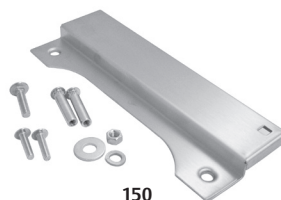
HESCUT-MTK



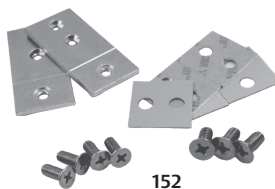
9000-MTK



SMB



150



152



157



157D



310-2-3



2001-1



2001M



2004M



2005M3



2006M



2007M

# Cabinet Locks

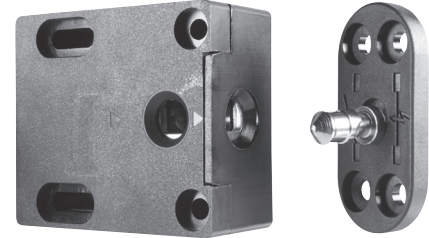
## 610 Multi-Purpose Electromechanical Lock

ITEM	DESCRIPTION	PRICE
<b>610</b>	Standard — No Monitoring	\$134
<b>610LM</b>	Locked State Monitoring	\$184

### How to Order

Specify quantity and the following information. Order related products separately.

SERIES	OPTION(S)
<b>610</b>	<b>— LM</b>
<b>610</b> Cabinet Lock	<b>(blank)</b> No Monitoring <b>LM</b> Locked State Monitoring



## 660 Multi-Purpose Electromechanical Lock

MODEL	BLK
<b>660</b>	\$160
<b>660-LBSM</b>	\$198
<b>660-Preload</b>	\$238
<b>660-LBSM-Preload</b>	\$272
<b>660-LBSM-20PK</b>	\$3960

### Accessories

ITEM	DESCRIPTION	PRICE
<b>660-KO</b>	660 Key override	\$87

### How to Order

Specify quantity and the following information. Order related products separately.

SERIES	VOLTAGE	OPTION(S)
<b>660</b>	<b>— 12V</b>	<b>— LBSM — Preload</b>
<b>660</b> Cabinet Lock	<b>12V</b> 12 Volt	<b>(blank)</b> No preload, no monitoring
	<b>24V</b> 24 Volt	<b>Preload</b> Up to 15 lbs
		<b>LBSM</b> Locked state monitoring
		<b>LBSM-20PK</b> Locked state monitoring 20 pack
		<b>LBSM-Preload</b> Locked state monitoring with Preload



## KP20 Series Cabinet Lock

MODEL	DESCRIPTION	BLK
<b>KP20</b>	Stand-alone Keypad Cabinet Lock	\$125



## K100 Aperio® Factory Paired Cabinet Lock with AH20 Wiegand Hub

ITEM	DESCRIPTION	PRICE
K100-622H-IPS-BP	HID multiCLASS SE, Black, Pinch Knob, For 1/16" to 1/2" Thick Doors	\$989
K100-622H-IPS-BP2	HID multiCLASS SE, Black, Pinch Knob, For ≥1/2" to 1-1/2" Thick Doors	\$999
K100-622H-IPS-BP3	HID multiCLASS SE, Black, Pinch Knob, For ≤ 1-1/2" to 2-1/4" Thick Doors	\$1009
K100-622H-IPS-BL	HID multiCLASS SE, Black, Lever Knob, For 1/16" to 1/2" Thick Doors	\$989
K100-622H-IPS-BL2	HID multiCLASS SE, Black, Lever Knob, For ≤ 1/2" to 1-1/2" Thick Doors	\$999
K100-622H-IPS-BL3	HID multiCLASS SE, Black, Lever Knob, For ≤ 1-1/2" to 2-1/4" Thick Doors	\$1009



## K100 Demo Mounts

ITEM	DESCRIPTION	PRICE
DEMO-K100-622-IPS-BL	K100 Demo Mount, HID multiCLASS SE, NFC HID Mobile Access Enabled, Black, Lever Knob	\$1075
DEMO-K100-622-IPS-BP	K100 Demo Mount, HID multiCLASS SE, NFC HID Mobile Access Enabled, Black, Pinch Knob	\$1075

## Accessories

ITEM	DESCRIPTION	PRICE
OBS-622	K Series Open Back Strike Plate for Drawers	\$30

## How to Order Specify quantity and the following information. Order related products separately.

SERIES	MODEL	CREDENTIAL TECHNOLOGY	COLOR	Knob Type	SHAFT LENGTH (DOOR THICKNESS)
K100	- 622H	- IPS	- B	P	2
	622H* Factory Paired* for Doors with AH20 1:1 Wiegand Hub	IPS HID Prox®, Kantech ioProx, HID iCLASS®, HID iCLASS SE® (SIOenabled), HID iCLASS® Seos™, HID MIFARE® SE, HID DESFire® EV1 SE, MIFARE Classic, MIFARE DESFire EV1, NFC-enabled mobile phones	B Black	P Pinch L Lever	_(Blank) 1/16" to 1/2" (standard) 2 ≥ 1/2" to 1-1/2" 3 ≥ 1-1/2" to 2-1/4"

\*Kit includes integrated lock paired with Wiegand 1:1 wireless hub.

**K100:** The K100 Cabinet Lock is available as either a pre-paired lock and hub kit (no certification required) or as a field configurable component (requires Aperio® Certified Integrator certification). Pre-paired kits support limited features. Field configured devices are required in order to support all options. Visit [www.IntelligentOpenings.com](http://www.IntelligentOpenings.com) to learn more.

## K200 Series Integrated Wired Access Control Cabinet Lock

ITEM	DESCRIPTION	PRICE
<b>K200-622-IPS-BP</b>	K200-622 Integrated Wired, Wiegand Cabinet Lock For Doors With HID multiCLASS SE Card Reader and Black Pinch Knob	\$675
<b>K200-622-IPV040-BP</b>	K200-622 Integrated Wired, Wiegand Cabinet Lock For Doors With HID SE PIV-I 40 Bit Card Reader and Black Pinch Knob	\$675
<b>K200-622-IPV064-BP</b>	K200-622 Integrated Wired, Wiegand Cabinet Lock For Doors With HID SE PIV-I 64 Bit Card Reader and Black Pinch Knob	\$675
<b>K200-622-IPV075-BP</b>	K200-622 Integrated Wired, Wiegand Cabinet Lock For Doors With HID SE PIV-I 75 Bit Card Reader and Black Pinch Knob	\$675
<b>K200-622-IPV128-BP</b>	K200-622 Integrated Wired, Wiegand Cabinet Lock For Doors With HID SE PIV-I 128 Bit Card Reader and Black Pinch Knob	\$675
<b>K200-622-IPV200-BP</b>	K200-622 Integrated Wired, Wiegand Cabinet Lock For Doors With HID SE PIV-I 200 Bit Card Reader and Black Pinch Knob	\$675



## How to Order

SERIES	COMMUNICATION	MODEL	CARD TECHNOLOGY				KNOB OPTIONS
K	200	-S	-IPS				K1
Cabinet Lock	200 Wiegand	622 for use with cabinet DOORS	STANDARD	IPS	HID multiCLASS SE	HID Prox®, Kantech ioProx, HID iCLASS®, HID iCLASS SE® (SIO-enabled), HID iCLASS® Seos™, HID MIFARE® SE, HID DESFire® EV1 SE, MIFARE Classic, MIFARE DESFire EV1, NFC-enabled mobile phones	B2, Obsolete
		622D for use with cabinet DRAWERS					BP, Black, Plastic Pinch Knob
			ICLASS ELITE (Restricted)*	IPEXXXXX	HID iCLASS Elite	HID iCLASS Elite Keys (ICEXXXX)*, HF Only	
			PIV-I	IPV040	RFID Only (HID iCLASS SE) PIV-I / 40 Bit FASC-N	40 Bit FASC-N message length: System + Credential (parity automatically removed), HF Only	
				IPV064	RFID Only (HID iCLASS SE) PIV-I / 64 Bit FASC-N	64 Bit FASC-N message length: Agency + System + Credential + Series + Issue (parity automatically removed), HF Only	
				IPV075	RFID Only (HID iCLASS SE) PIV-I / 75 Bit FASC-N	75 Bit FASC-N message length: Agency + System + Credential + Expiration Date (parity automatically removed), HF Only	
				IPV128	RFID Only (HID iCLASS SE) PIV-I / 128 Bit FASC-N	128 Bit FASC-N message length: Agency + System + Credential + Series + Issue + Pers Iden + Org/Ind + Pers/Org (parity automatically removed), HF Only	
				IPV200	RFID Only (HID iCLASS SE) PIV-I / 200 Bit FASC-N	200 Bit complete FASC-N number (parity included), HF Only	



## KS200 Series Integrated Wired, Wiegand Access Control Server Cabinet Lock

ITEM	DESCRIPTION	PRICE
KS200-S-IPS-B	KS200-S Integrated Wired, Wiegand Server Cabinet Lock With No Cylinder and HID multiCLASS SE Card Reader, HID NFC Mobile Access Enabled	\$625
KS200-S-IPS-B-BC	KS200-S Integrated Wired, Wiegand Server Cabinet Lock With Blank Plastic SFIC Core and HID multiCLASS SE Card Reader, HID NFC Mobile Access Enabled	\$640
KS200-S-IPS-B-K1	KS200-S Integrated Wired, Wiegand Server Cabinet Lock With MEDECO X4 SFIC (DGV Commercial Keyway) with 2 Keys (1 Control, 1 User) and HID multiCLASS SE Card Reader, HID NFC Mobile Access Enabled	\$725
KS200-S-IPV040-B	KS200-S Integrated Wired, Wiegand Server Cabinet Lock With No Cylinder and HID SE PIV-I 40 Bit Card Reader, HID NFC Mobile Access Enabled	\$625
KS200-S-IPV040-B-BC	KS200-S Integrated Wired, Wiegand Server Cabinet Lock With Blank Plastic SFIC Core and HID SE PIV-I 40 Bit Card Reader, HID NFC Mobile Access Enabled	\$640
KS200-S-IPV040-B-K1	KS200-S Integrated Wired, Wiegand Server Cabinet Lock With MEDECO X4 SFIC (DGV Commercial Keyway) with 2 Keys (1 Control, 1 User) and HID SE PIV-I 40 Bit Card Reader, HID NFC Mobile Access Enabled	\$725
KS200-S-IPV064-B	KS200-S Integrated Wired, Wiegand Server Cabinet Lock With No Cylinder and HID SE PIV-I 64 Bit Card Reader, HID NFC Mobile Access Enabled	\$625
KS200-S-IPV064-B-BC	KS200-S Integrated Wired, Wiegand Server Cabinet Lock With Blank Plastic SFIC Core and HID SE PIV-I 64 Bit Card Reader, HID NFC Mobile Access Enabled	\$640
KS200-S-IPV064-B-K1	KS200-S Integrated Wired, Wiegand Server Cabinet Lock With MEDECO X4 SFIC (DGV Commercial Keyway) with 2 Keys (1 Control, 1 User) and HID SE PIV-I 64 Bit Card Reader, HID NFC Mobile Access Enabled	\$725
KS200-S-IPV075-B	KS200-S Integrated Wired, Wiegand Server Cabinet Lock With No Cylinder and HID SE PIV-I 75 Bit Card Reader, HID NFC Mobile Access Enabled	\$625
KS200-S-IPV075-B-BC	KS200-S Integrated Wired, Wiegand Server Cabinet Lock With Blank Plastic SFIC Core and HID SE PIV-I 75 Bit Card Reader, HID NFC Mobile Access Enabled	\$640
KS200-S-IPV075-B-K1	KS200-S Integrated Wired, Wiegand Server Cabinet Lock With MEDECO X4 SFIC (DGV Commercial Keyway) with 2 Keys (1 Control, 1 User) and HID SE PIV-I 75 Bit Card Reader, HID NFC Mobile Access Enabled	\$725
KS200-S-IPV128-B	KS200-S Integrated Wired, Wiegand Server Cabinet Lock With No Cylinder and HID SE PIV-I 128 Bit Card Reader, HID NFC Mobile Access Enabled	\$625
KS200-S-IPV128-B-BC	KS200-S Integrated Wired, Wiegand Server Cabinet Lock With Blank Plastic SFIC Core and HID SE PIV-I 128 Bit Card Reader, HID NFC Mobile Access Enabled	\$640
KS200-S-IPV128-B-K1	KS200-S Integrated Wired, Wiegand Server Cabinet Lock With MEDECO X4 SFIC (DGV Commercial Keyway) with 2 Keys (1 Control, 1 User) and HID SE PIV-I 128 Bit Card Reader, HID NFC Mobile Access Enabled	\$725
KS200-S-IPV200-B	KS200-S Integrated Wired, Wiegand Server Cabinet Lock With No Cylinder and HID SE PIV-I 200 Bit Card Reader, HID NFC Mobile Access Enabled	\$625
KS200-S-IPV200-B-BC	KS200-S Integrated Wired, Wiegand Server Cabinet Lock With Blank Plastic SFIC Core and HID SE PIV-I 200 Bit Card Reader, HID NFC Mobile Access Enabled	\$640
KS200-S-IPV200-B-K1	KS200-S Integrated Wired, Wiegand Server Cabinet Lock With MEDECO X4 SFIC (DGV Commercial Keyway) with 2 Keys (1 Control, 1 User) and HID SE PIV-I 200 Bit Card Reader, HID NFC Mobile Access Enabled	\$725



## KS210 Series Integrated Wired, RS-485 OSDP Access Control Server Cabinet Lock

ITEM	DESCRIPTION	PRICE
KS210-S-IPS-B	KS210-S Integrated Wired, OSDP Server Cabinet Lock With No Cylinder and HID multiCLASS SE Card Reader, HID BLE & NFC Mobile Access Enabled	\$725
KS210-S-IPS-B-BC	KS210-S Integrated Wired, OSDP Server Cabinet Lock With Blank Plastic SFIC Core and HID multiCLASS SE Card Reader, HID BLE & NFC Mobile Access Enabled	\$740
KS210-S-IPS-B-K1	KS210-S Integrated Wired, OSDP Server Cabinet Lock With MEDECO X4 SFIC (DGV Commercial Keyway) with 2 Keys (1 Control, 1 User) and HID multiCLASS SE Card Reader, HID BLE & NFC Mobile Access Enabled	\$825
KS210-S-IPV040-B	KS210-S Integrated Wired, OSDP Server Cabinet Lock With No Cylinder and HID SE PIV-I 40 Bit Card Reader, HID BLE & NFC Mobile Access Enabled	\$725
KS210-S-IPV040-B-BC	KS210-S Integrated Wired, OSDP Server Cabinet Lock With Blank Plastic SFIC Core and HID SE PIV-I 40 Bit Card Reader, HID BLE & NFC Mobile Access Enabled	\$740
KS210-S-IPV040-B-K1	KS210-S Integrated Wired, OSDP Server Cabinet Lock With MEDECO X4 SFIC (DGV Commercial Keyway) with 2 Keys (1 Control, 1 User) and HID SE PIV-I 40 Bit Card Reader, HID BLE & NFC Mobile Access Enabled	\$825
KS210-S-IPV064-B	KS210-S Integrated Wired, OSDP Server Cabinet Lock With No Cylinder and HID SE PIV-I 64 Bit Card Reader, HID BLE & NFC Mobile Access Enabled	\$725
KS210-S-IPV064-B-BC	KS210-S Integrated Wired, OSDP Server Cabinet Lock With Blank Plastic SFIC Core and HID SE PIV-I 64 Bit Card Reader, HID BLE & NFC Mobile Access Enabled	\$740
KS210-S-IPV064-B-K1	KS210-S Integrated Wired, OSDP Server Cabinet Lock With MEDECO X4 SFIC (DGV Commercial Keyway) with 2 Keys (1 Control, 1 User) and HID SE PIV-I 64 Bit Card Reader, HID BLE & NFC Mobile Access Enabled	\$825
KS210-S-IPV075-B	KS210-S Integrated Wired, OSDP Server Cabinet Lock With No Cylinder and HID SE PIV-I 75 Bit Card Reader, HID BLE & NFC Mobile Access Enabled	\$725
KS210-S-IPV075-B-BC	KS210-S Integrated Wired, OSDP Server Cabinet Lock With Blank Plastic SFIC Core and HID SE PIV-I 75 Bit Card Reader, HID BLE & NFC Mobile Access Enabled	\$740
KS210-S-IPV075-B-K1	KS210-S Integrated Wired, OSDP Server Cabinet Lock With MEDECO X4 SFIC (DGV Commercial Keyway) with 2 Keys (1 Control, 1 User) and HID SE PIV-I 75 Bit Card Reader, HID BLE & NFC Mobile Access Enabled	\$825



## KS210 Series Integrated Wired, RS-485 OSDP Access Control Server Cabinet Lock

<b>KS210-S-IPV128-B</b>	KS210-S Integrated Wired, OSDP Server Cabinet Lock With No Cylinder and HID SE PIV-I 128 Bit Card Reader, HID BLE & NFC Mobile Access Enabled	\$725
<b>KS210-S-IPV128-B-BC</b>	KS210-S Integrated Wired, OSDP Server Cabinet Lock With Blank Plastic SFIC Core and HID SE PIV-I 128 Bit Card Reader, HID BLE & NFC Mobile Access Enabled	\$740
<b>KS210-S-IPV128-B-K1</b>	KS210-S Integrated Wired, OSDP Server Cabinet Lock With MEDECO X4 SFIC (DGV Commercial Keyway) with 2 Keys (1 Control, 1 User) and HID SE PIV-I 128 Bit Card Reader, HID BLE & NFC Mobile Access Enabled	\$825
<b>KS210-S-IPV200-B</b>	KS210-S Integrated Wired, OSDP Server Cabinet Lock With No Cylinder and HID SE PIV-I 200 Bit Card Reader, HID BLE & NFC Mobile Access Enabled	\$725
<b>KS210-S-IPV200-B-BC</b>	KS210-S Integrated Wired, OSDP Server Cabinet Lock With Blank Plastic SFIC Core and HID SE PIV-I 200 Bit Card Reader, HID BLE & NFC Mobile Access Enabled	\$740
<b>KS210-S-IPV200-B-K1</b>	KS210-S Integrated Wired, OSDP Server Cabinet Lock With MEDECO X4 SFIC (DGV Commercial Keyway) with 2 Keys (1 Control, 1 User) and HID SE PIV-I 200 Bit Card Reader, HID BLE & NFC Mobile Access Enabled	\$825

## How to Order

SERIES	COMMUNICATION	MODEL	CARD TECHNOLOGY				COLOR	KEYING OPTIONS	
KS	200	-S	-IPS				-B	K1	
Server Cabinet Lock	200 Wiegand	640 Obsolete	STANDARD	IPS	HID multiCLASS SE	HID Prox®, Kantech ioProx, HID iCLASS®, HID iCLASS SE® (SIO-enabled), HID iCLASS® Seos™, HID MIFARE® SE, HID DESFire® EV1 SE, MIFARE Classic, MIFARE DESFire EV1, NFC-enabled mobile phones	B Black	No SFIC or Blank Plastic Core (Standard)	
	210 RS-485 OSDP	S Swing Handle 150x25 mm Cam Activated		ICLASS ELITE (Restricted)*	IPEXXXXX	HID iCLASS Elite		HID iCLASS Elite Keys (ICEXXXX)*, HF Only	BC SFIC blank (Black plastic core)
				BLE MOBILE ENABLED (KS210 MODELS ONLY)	BIPSEXXXXX	HID multiCLASS SE		HID Prox®, Kantech ioProx, HID iCLASS®, HID iCLASS SE® (SIO-enabled), HID iCLASS® Seos™, HID MIFARE® SE, HID DESFire® EV1 SE, MIFARE Classic, MIFARE DESFire EV1, NFC-enabled mobile phones, Bluetooth Smart-enabled mobile phones (HID Mobile Keys (MOBXXXX))*	K1 MEDECO X4 SFIC Cylinder (DGV Commercial Keyway, Keyed Alike) with 2 Keys (1 Control & 1 User)
			BLE MOBILE ENABLED ICLASS ELITE (RESTRICTED)*	BIPEXXXXXX	HID multiCLASS SE	HID iCLASS Elite Keys (ICEXXXX)*, HF Only; HID iCLASS®, HID iCLASS SE® (SIO-enabled), HID iCLASS® Seos™, HID MIFARE® SE, HID DESFire® EV1 SE, MIFARE Classic, MIFARE DESFire EV1, NFC-enabled mobile phones, Bluetooth Smart-enabled mobile phones (HID Mobile Keys (MOBXXXXX))*			
			PIV-I	IPV040	RFID Only (HID iCLASS SE) PIV-I / 40 Bit FASC-N	40 Bit FASC-N message length: System + Credential (parity automatically removed), HF Only			
				IPV064	RFID Only (HID iCLASS SE) PIV-I / 64 Bit FASC-N	64 Bit FASC-N message length: Agency + System + Credential + Series + Issue (parity automatically removed), HF Only			
	IPV075	RFID Only (HID iCLASS SE) PIV-I / 75 Bit FASC-N		75 Bit FASC-N message length: Agency + System + Credential + Expiration Date (parity automatically removed), HF Only					
		IPV128	RFID Only (HID iCLASS SE) PIV-I / 128 Bit FASC-N	128 Bit FASC-N message length: Agency + System + Credential + Series + Issue + Pers Iden + Org/Ind + Pers/Org (parity automatically removed), HF Only					
		IPV200	RFID Only (HID iCLASS SE) PIV-I / 200 Bit FASC-N	200 Bit complete FASC-N number (parity included), HF Only					

## KS-M Mechanical Server Cabinet Lock

ITEM	DESCRIPTION	PRICE
<b>KS-M-B</b>	KS-M Mechanical Server Cabinet Lock with No Cylinder	\$115
<b>KS-M-B-K1</b>	KS-M Mechanical Server Cabinet Lock with MEDECO X4 SFIC (DGV Commercial Keyway) with 2 Keys (1 Control, 1 User)	\$215



## Accessories

### K200, KS200, KS210 & KS-M Accessories

ITEM	DESCRIPTION	PRICE
<b>OBS-622</b>	K Series Open Back Strike Plate for Drawers	\$30
<b>CBL6-QC12</b>	Lock Side Interface Cable: 6 Foot, 12 Conductor and Molex both ends	\$65
<b>CBL12-QC12</b>	System Side Interface Cable: 12 Foot, 12 Conductor and Molex one end, pinned one end	\$85
<b>SFIC</b>	MEDECO X4 SFIC Core (DGV Commercial Keyway) with 2 Keys (1 Control, 1 User)	\$100
<b>SFIC-BC</b>	KS SFIC Blank, Black Plastic Core	\$15
<b>KS-DPS</b>	Surface Mount DPS (external)	\$30
<b>KS-CAM45</b>	CAM: 45MM—5	\$8
<b>KS-CAM38</b>	CAM: 38MM—1	\$8
<b>WT-1</b>	Wiegand Test Box with LED Indicators	\$650
<b>WT-2</b>	Wiegand Test Box with LCD Backlit Display with LED Indicators	\$750

# Warranties & Terms & Conditions

## HES Warranties

We believe that the best products in the industry should be supported by our commitment to deliver the highest quality products and services. HES is proud to extend the most comprehensive no-fault, no-questions asked warranty coverage to all of our products and solutions. This is our expectation and commitment to you – our valued customer.



**SecuriCare  
Warranty**

### SecuriCare 10-year Warranty

**Duration:** Ten years from date of shipment.

**Condition:** Any reason including, but not limited to, installation error, vandalism or force majeure.

**Replacement:** Replacement product or equivalent shipped at h.e.s. expense via next day air freight in most cases.

**Products Covered:**

- When installed with a Smart PAC III, the following electric strikes are upgraded to the 10-year warranty:
  - » 1006, 1500, 1600, 4500, 5000, 5200, 7500, 8000, 8300, 8500, 9400, 9500, 9600, 9700, 9800
  - » Folger Adam 310, 712, 732, 742

.....



**SecuriCare  
Warranty**

### SecuriCare 5-year Warranty

**Duration:** Five years from date of shipment.

**Condition:** Any reason including, but not limited to, installation error, vandalism or force majeure.

**Replacement:** Replacement product or equivalent shipped at h.e.s.'s expense via next day air freight in most cases.

**Products Covered:**

- Electric Strikes:
  - » 1006, 1500, 1600, 4500, 5000, 5200, 7500, 8000, 8300, 8500, 9400, 9500, 9600, 9700, 9800
  - » Folger Adam 310, 712, 732, 742
  - » MUNL, UNL

.....



**SecuriCare  
Warranty**

### SecuriCare 3-year Warranty

**Duration:** Three years from date of shipment.

**Condition:** Any reason, including but not limited to, installation error, vandalism or force majeure.

**Replacement:** Replacement product or equivalent shipped at h.e.s.'s expense via next day air freight in most cases.

**Products Covered:**

- ES100 Aperio® Wireless Electric Strike
- Cabinet Locks: K, KS and 600 Series & Accessories

Check your individual product to determine warranty coverage. Batteries and consumables are not covered by HES Warranty programs. Replacement products, at HES's sole option, may be the identical item or a unit which serves as a functional replacement. If the customer has an account with HES or a valid credit card, the customer may order an advance replacement product, whereby HES will charge the customer's account for the price of the product plus next day air freight, and will credit back to the customer the full amount of the charge, including outbound freight, upon HES receipt of the original product from the customer. HES's sole and exclusive liability, and customer's sole remedy, is limited to the replacement of the HES product when delivered to HES's facility (freight and insurance charges prepaid by customer).

## HES Terms & Conditions

**PRICES:** All prices are subject to change without notice. Prices listed on the HES website will serve as the most current list price. All shipments will be made at prices in effect at the time of shipment. The customer shall be responsible for payment of all applicable sales and/or use taxes and freight costs.

**MINIMUM ORDER:** Minimum product charge per invoice is \$150.00 USD.

**PAYMENT TERMS:** Net thirty (30) days from date of invoice. Interest at the rate of up to 1-1/2% per month may be charged on all past due accounts. An order received on an account which has not been paid within 45 days of the date of invoice may not be processed until the account is current. Custom orders may require a deposit.

**DELIVERY TERMS:** All prices are Ex-works factory. Purchaser assumes the risk of loss or damage to the goods while in transit from the point of shipment. HES reserves the right to make delivery in installments. Installments shall be separately invoiced and paid for when due. Delay in delivery of an installment shall not relieve the purchaser of its obligation to accept remaining deliveries.

**SHORTAGE:** Any claim for shortages must be made to HES in writing within one (1) week of receipt of merchandise.

**WARRANTY RETURNS:** A Customer Care Form (CCF) for defective product must be obtained from HES before any merchandise can be returned. CCF's are valid for sixty (60) days from date of issuance. Goods returned under the terms of MagnaCare® and SecuriCare® Warranties may require a copy of the original invoice.

**RETURNS:** A Customer Care Form (CCF) must be obtained from HES before any merchandise can be returned. CCF's are valid for sixty (60) days from date of issuance. Items that are not factory sealed, or that are returned later than 90 days from the date of receipt are subject to a restocking charge plus an additional charge for any damage.

**CANCELLATIONS:** Any order may be subject to a 5% cancellation charge for catalog items. Cancellation of non-catalog or custom items will be subject to a 20% cancellation charge plus all costs (both direct and indirect) incurred by manufacturing at the point of cancellation that are properly allocated to the cancelled item(s).

**LIMITATION OF LIABILITY:** Neither party will be liable to the other for any delay or failure in performance arising directly out of war, sabotage, insurrection, riot, and any other act of civil disobedience, act of public enemy, fire, explosion, flood, storm, or other act of God or nature, or similar cause beyond its reasonable control, including shortage or unavailability of labor or materials. If, notwithstanding the foregoing limitations, HES has any liability to the purchaser, the purchaser agrees that the total liability to the purchaser for all losses, damages, and causes of action, whether in contract, equity, tort (including without limitation, negligence and gross negligence), or otherwise, will not exceed the amount the purchaser paid to HES for the products (including, without limitation, incidental or consequential damages, damages for lost profits or business interruption, and punitive damages).

**NO THIRD PARTY LIABILITY** If the purchaser uses the HES Products on behalf of others or provides to others any products referenced herein, the HES Parties shall have no liability to such persons whatsoever, and the purchaser agree to defend and indemnify the HES Parties from any and all claims and demands asserted against them, and from any legal fees, costs and other expenses that the HES Parties incur therewith.

Customers purchasing from Door Security Solutions Canada can find Canadian terms and conditions at [www.assaabloy.ca/terms](http://www.assaabloy.ca/terms)



The ASSA ABLOY Group is the global leader in access solutions. Every day we help people feel safe, secure and experience a more open world.



**ASSA ABLOY**



## USA

800 626 7590 | f. 866 582 4641 | [hesinnovations.com](https://hesinnovations.com)  
[customerservice.hes@assaabloy.com](mailto:customerservice.hes@assaabloy.com)  
[techsupport.hes@assaabloy.com](mailto:techsupport.hes@assaabloy.com)  
[orders.hes@assaabloy.com](mailto:orders.hes@assaabloy.com)

## CANADA

800 461 3007 | f. 800 461 8989 | [assaabloydss.ca](https://assaabloydss.ca)  
[sales.dss.ca@assaabloy.com](mailto:sales.dss.ca@assaabloy.com)  
[orders.dss.ca@assaabloy.com](mailto:orders.dss.ca@assaabloy.com)

Printed in the U.S.

Patent pending and/or patent [www.assaabloydss.com/patents](https://www.assaabloydss.com/patents)

Copyright © 2021-2022, Hanchett Entry Systems, Inc., an ASSA ABLOY Group company. All rights reserved. Reproduction in whole or in part without the express written permission of Hanchett Entry Systems, Inc. is prohibited. HES-085-1021